

# **LEGEND:**

**EXISTING LOCATION**

**EnCana OIL & GAS (USA) INC.**

**WELL PAD SG L27 496**

**SECTION 27, T4S, R96W, 6th P.M.**

**NW 1/4 SW 1/4**

**SHEET 7 of 10**



**Uintah Engineering & Land Surveying**  
85 South 200 East Vernal, Utah 84078  
(435) 789-1017 \* FAX (435) 789-1813



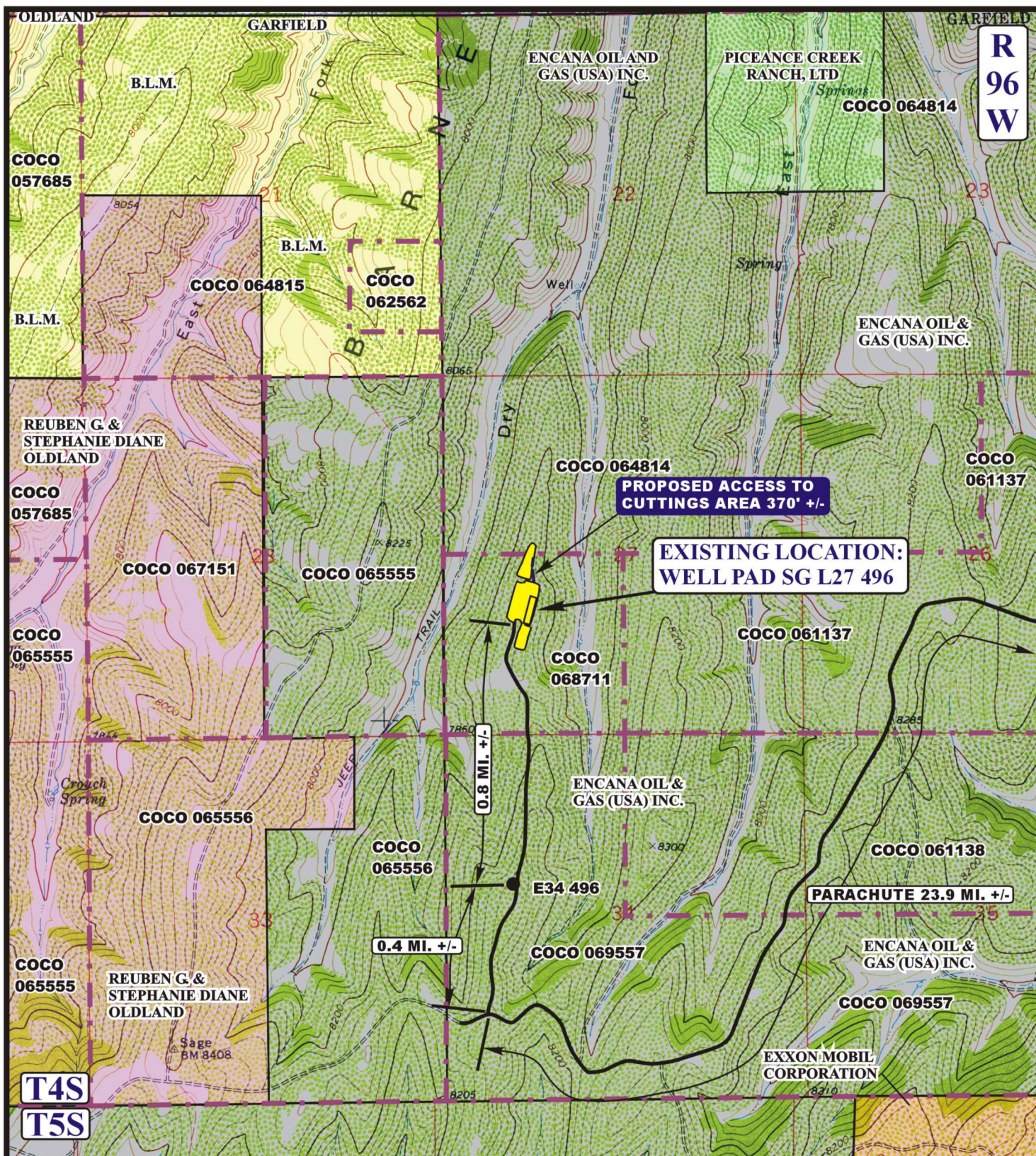
**TOPOGRAPHIC  
MAP**

**4** **4** **07**  
MONTH DAY YEAR

**SCALE: 1:100,000** **DRAWN BY: J.L.G.** **REVISED: 12-19-12**







# LEGEND:

EXISTING ROAD  
 PROPOSED ACCESS



Encana OIL & GAS (USA) INC.

WELL PAD SG L27 496

SECTION 27, T4S, R96W, 6th P.M.

NW 1/4 SW 1/4

SHEET 8 OF 10



Uintah Engineering & Land Surveying  
 85 South 200 East Vernal, Utah 84078  
 (435) 789-1017 \* FAX (435) 789-1813

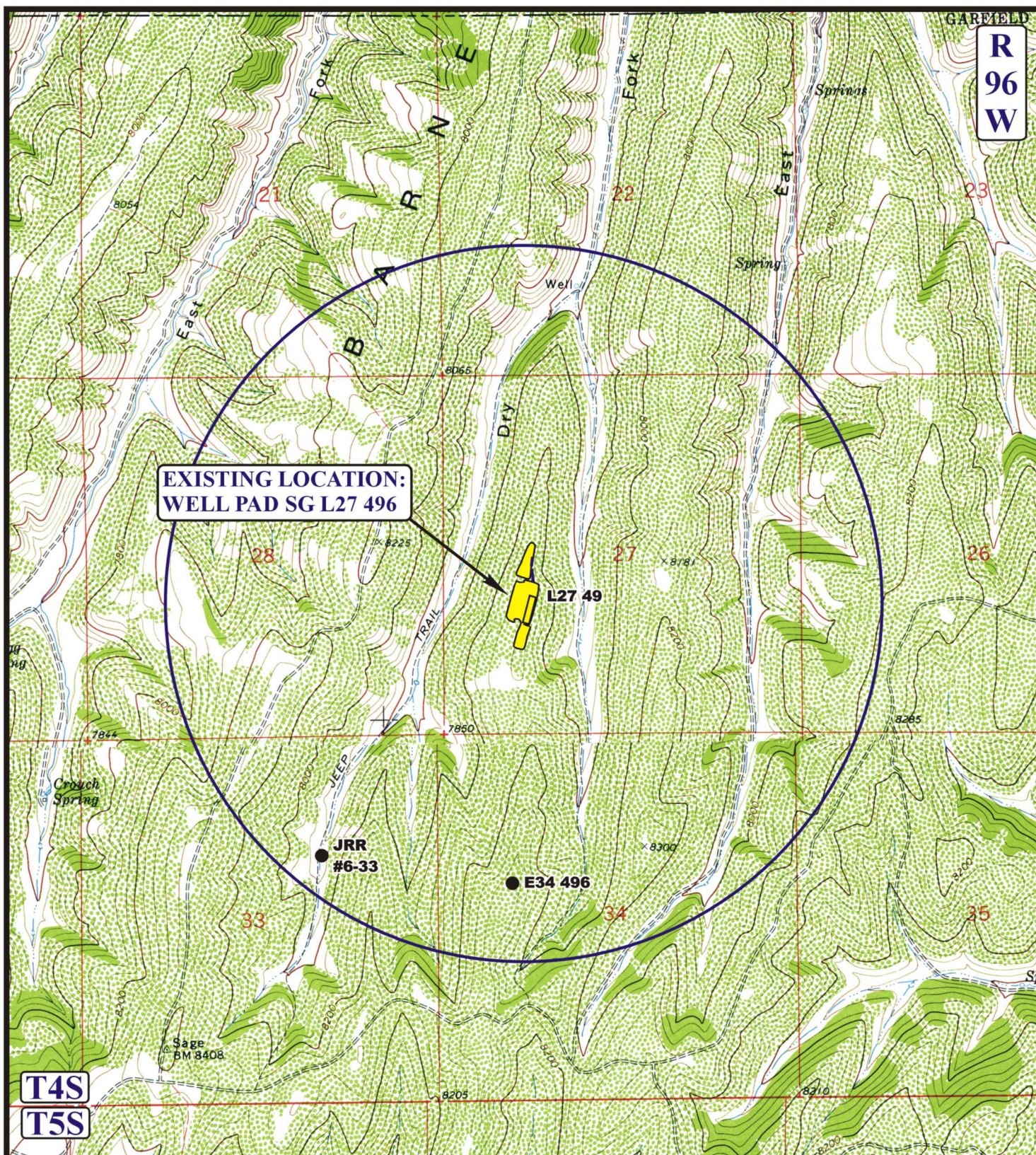
ACCESS ROAD  
 MAP

4 MONTH  
 4 DAY  
 07 YEAR

SCALE: 1" = 2000' DRAWN BY: J.L.G. REVISED: 12-19-12

B  
 TOPO





**EXISTING LOCATION:  
WELL PAD SG L27 496**

**Encana OIL & GAS (USA) INC.**  
**WELL PAD SG L27 496**  
**SECTION 27, T4S, R96W, 6th P.M.**  
**NW 1/4 SW 1/4**  
 SHEET 9 of 10

**LEGEND:**

- ⊗ DISPOSAL WELLS
- PRODUCING WELLS
- ⬮ SHUT IN WELLS
- ⬮ ABANDONED WELLS
- ⬮ TEMPORARILY ABANDONED



Utah Engineering & Land Surveying  
 85 South 200 East Vernal, Utah 84078  
 (435) 789-1017 \* FAX (435) 789-1813

**TOPOGRAPHIC  
MAP**

**4** **4** **07**  
 MONTH DAY YEAR

SCALE: 1" = 2000' DRAWN BY: J.L.G. REVISED: 12-19-12

