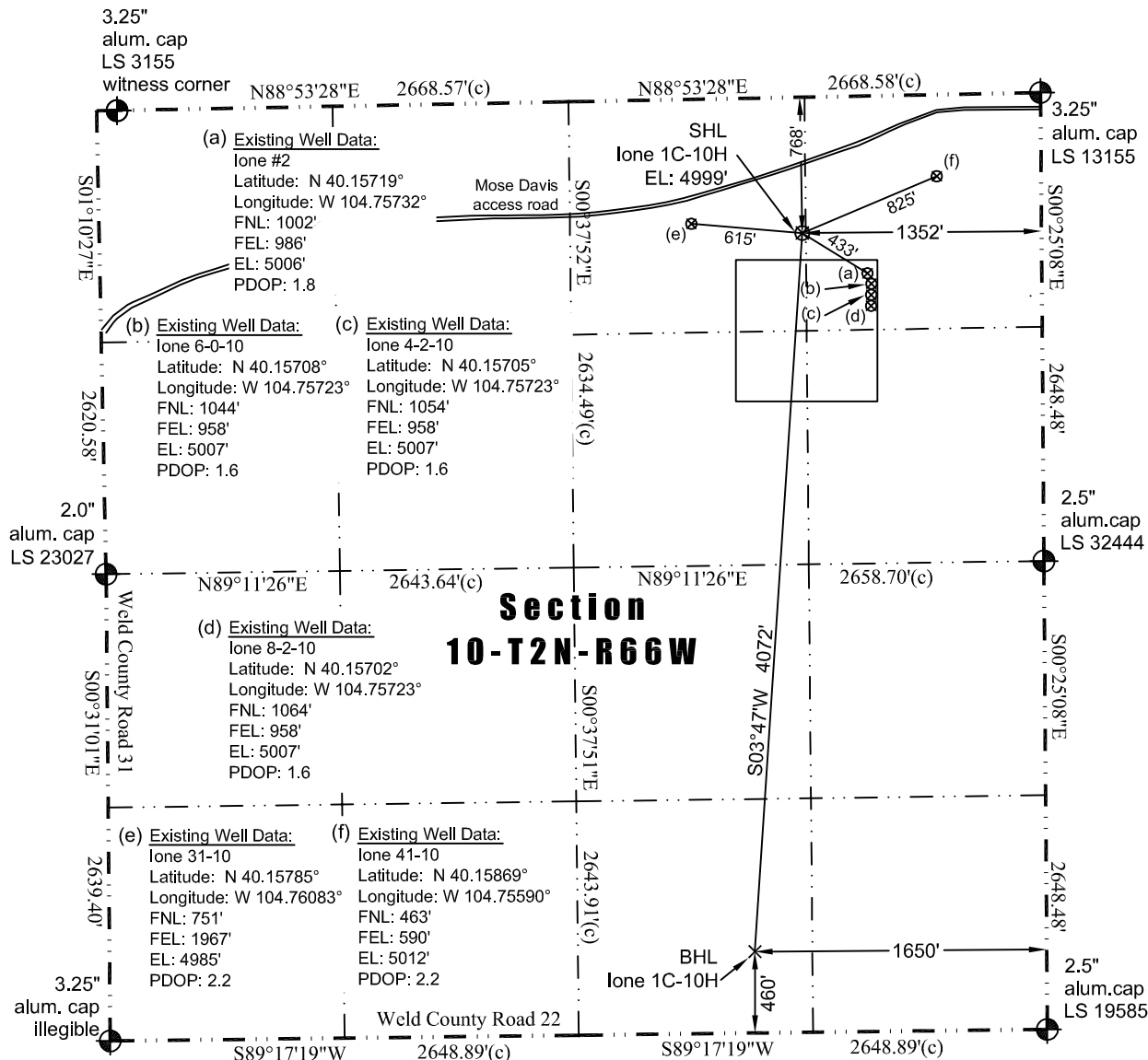


JR Land Surveying, LLC

8114 Northstar Drive
Windsor, Colorado 80528
P. 970-576-4641

WELL LOCATION CERTIFICATE

THIS MAP DOES NOT REPRESENT A BOUNDARY SURVEY



Scale 1" = 1000'
approximate scale

LEGEND
— found survey monument
— calculated dimension
(c)

In accordance with a request from Jay Knutson of EnCana Oil & Gas (USA) Inc., JR Land Surveying, LLC has determined the location of the **lone 1C-10H** well site to be SHL: 768' FNL and 1352' FEL, (BHL: 460' FSL and 1650' FEL) as measured at ninety (90) degrees from the section lines of Section 10, Township 2 North, Range 66 West, 6th Principal Meridian, County of Weld, CO.

I hereby certify that this Well Location Certificate was prepared by me or under my direct supervision on 10/10/2012 for and on behalf of EnCana Oil & Gas (USA) Inc. That it is not a Land Survey Plat or an Improvement Survey Plat and that it is not to be relied upon for establishment of fences, buildings, or other future improvement lines.

John Robert McGehee LS#38219
Well: lone 1C-10H WLC