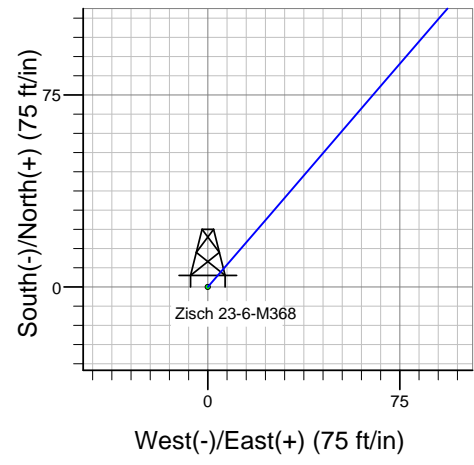
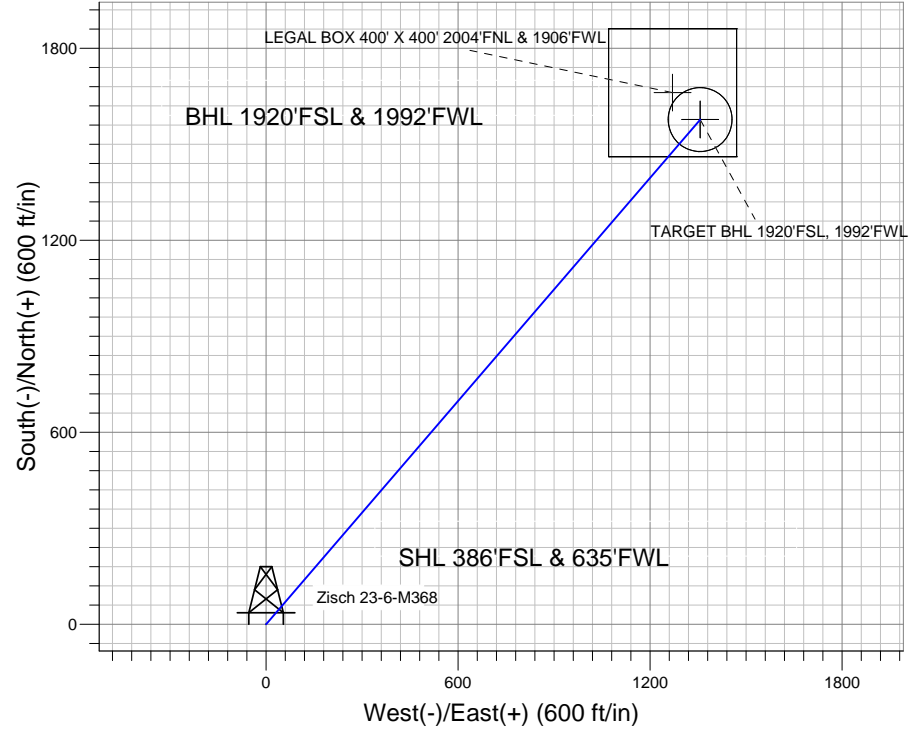
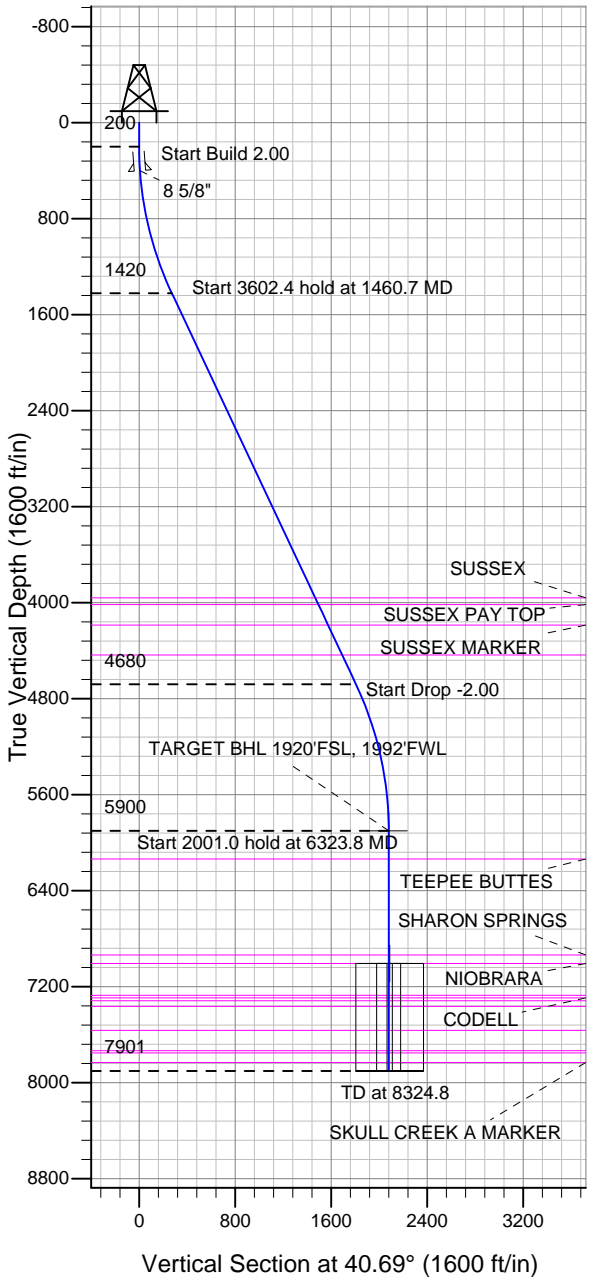


Well Name: Zisch 23-6-M368

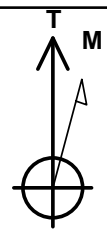
Surface Location: Zisch 23-6-M368 Pad Sec.6-T3N-R68W
 North American Datum 1983 US State Plane 1983 Colorado Northern Zone

Ground Elevation: 5163.0
 +N/-S +E/-W Northing Easting Latitude Longitude Slot
 0.0 0.0 1333601.22 3124825.27 40.248270 -105.052810
 Original Well Elev WELL @ 5176.0ft (Original Well Elev)

EnCana Oil & Gas Weld County CO



Zisch 23-6-M368 Pad Sec.6-T3N-R68W
 Zisch 23-6-M368
 Plan #1 (1-10-13)



Azimuths to True North
 Magnetic North: 8.79°

Magnetic Field
 Strength: 52852.2snT
 Dip Angle: 66.83°
 Date: 1/10/2013
 Model: IGRF2010

WELLBORE TARGET DETAILS (LAT/LONG)

Name	TVD	+N/-S	+E/-W	Latitude	Longitude	Shape
TARGET BHL 1920'FSL, 1992'FWL	5900.0	1577.5	1356.6	40.252600	-105.047950	Point
LEGAL BOX 400' X 400' 2004'FNL & 1906'FWL	7006.0	1661.5	1270.6	40.252831	-105.048258	Rectangle (Sides: L400.0 W400.0)
TARGET CIRCLE 1920'FSL & 1992'FWL	7006.0	1577.5	1356.6	40.252600	-105.047950	Circle (Radius: 100.0)

SECTION DETAILS

Sec	MD	Inc	Azi	TVD	+N/-S	+E/-W	DLeg	TFace	VSec	Target
1	0.0	0.00	0.00	0.0	0.0	0.0	0.00	0.00	0.0	
2	200.0	0.00	0.00	200.0	0.0	0.0	0.00	0.00	0.0	
3	1460.7	25.21	40.69	1420.4	207.0	178.0	2.00	40.69	273.0	
4	5063.1	25.21	40.69	4679.6	1370.5	1178.6	0.00	0.00	1807.6	
5	6323.8	0.00	0.00	5900.0	1577.5	1356.6	2.00	180.00	2080.5	TARGET BHL 1920'FSL, 1992'FWL
6	8324.8	0.00	0.00	7901.0	1577.5	1356.6	0.00	0.00	2080.5	



Directional

EnCana Oil & Gas Weld County CO

SEC.6-T3N-R68W

Zisch 23-6-M368 Pad Sec.6-T3N-R68W

Zisch 23-6-M368

Wellbore #1

Plan: Plan #1 (1-10-13)

Standard Planning Report

10 January, 2013

Database:	Landmark	Local Co-ordinate Reference:	Well Zisch 23-6-M368
Company:	EnCana Oil & Gas Weld County CO	TVD Reference:	WELL @ 5176.0ft (Original Well Elev)
Project:	SEC.6-T3N-R68W	MD Reference:	WELL @ 5176.0ft (Original Well Elev)
Site:	Zisch 23-6-M368 Pad Sec.6-T3N-R68W	North Reference:	True
Well:	Zisch 23-6-M368	Survey Calculation Method:	Minimum Curvature
Wellbore:	Wellbore #1		
Design:	Plan #1 (1-10-13)		

Project	SEC.6-T3N-R68W, Weld County, Colorado		
Map System:	US State Plane 1983	System Datum:	Mean Sea Level
Geo Datum:	North American Datum 1983		Using Well Reference Point
Map Zone:	Colorado Northern Zone		Using geodetic scale factor

Site	Zisch 23-6-M368 Pad Sec.6-T3N-R68W				
Site Position:		Northing:	1,333,601.23 ft	Latitude:	40.248270
From:	Lat/Long	Easting:	3,124,825.27 ft	Longitude:	-105.052810
Position Uncertainty:	0.0 ft	Slot Radius:	"	Grid Convergence:	0.29 °

Well	Zisch 23-6-M368					
Well Position	+N-S	0.0 ft	Northing:	1,333,601.22 ft	Latitude:	40.248270
	+E-W	0.0 ft	Easting:	3,124,825.27 ft	Longitude:	-105.052810
Position Uncertainty		0.0 ft	Wellhead Elevation:	ft	Ground Level:	5,163.0 ft

Wellbore	Wellbore #1				
Magnetics	Model Name	Sample Date	Declination (°)	Dip Angle (°)	Field Strength (nT)
	IGRF2010	1/10/2013	8.79	66.83	52,852

Design	Plan #1 (1-10-13)			
Audit Notes:				
Version:	Phase:	PROTOTYPE	Tie On Depth:	0.0
Vertical Section:	Depth From (TVD) (ft)	+N-S (ft)	+E-W (ft)	Direction (°)
	0.0	0.0	0.0	40.69

Plan Sections										
Measured Depth (ft)	Inclination (°)	Azimuth (°)	Vertical Depth (ft)	+N-S (ft)	+E-W (ft)	Dogleg Rate (°/100ft)	Build Rate (°/100ft)	Turn Rate (°/100ft)	TFO (°)	Target
0.0	0.00	0.00	0.0	0.0	0.0	0.00	0.00	0.00	0.00	
200.0	0.00	0.00	200.0	0.0	0.0	0.00	0.00	0.00	0.00	
1,460.7	25.21	40.69	1,420.4	207.0	178.0	2.00	2.00	0.00	40.69	
5,063.1	25.21	40.69	4,679.6	1,370.5	1,178.6	0.00	0.00	0.00	0.00	
6,323.8	0.00	0.00	5,900.0	1,577.5	1,356.6	2.00	-2.00	0.00	180.00	TARGET BHL 192C
8,324.8	0.00	0.00	7,901.0	1,577.5	1,356.6	0.00	0.00	0.00	0.00	

Database:	Landmark	Local Co-ordinate Reference:	Well Zisch 23-6-M368
Company:	EnCana Oil & Gas Weld County CO	TVD Reference:	WELL @ 5176.0ft (Original Well Elev)
Project:	SEC.6-T3N-R68W	MD Reference:	WELL @ 5176.0ft (Original Well Elev)
Site:	Zisch 23-6-M368 Pad Sec.6-T3N-R68W	North Reference:	True
Well:	Zisch 23-6-M368	Survey Calculation Method:	Minimum Curvature
Wellbore:	Wellbore #1		
Design:	Plan #1 (1-10-13)		

Planned Survey									
Measured Depth (ft)	Inclination (°)	Azimuth (°)	Vertical Depth (ft)	+N/-S (ft)	+E/-W (ft)	Vertical Section (ft)	Dogleg Rate (°/100ft)	Build Rate (°/100ft)	Turn Rate (°/100ft)
0.0	0.00	0.00	0.0	0.0	0.0	0.0	0.00	0.00	0.00
40.0	0.00	0.00	40.0	0.0	0.0	0.0	0.00	0.00	0.00
80.0	0.00	0.00	80.0	0.0	0.0	0.0	0.00	0.00	0.00
120.0	0.00	0.00	120.0	0.0	0.0	0.0	0.00	0.00	0.00
160.0	0.00	0.00	160.0	0.0	0.0	0.0	0.00	0.00	0.00
200.0	0.00	0.00	200.0	0.0	0.0	0.0	0.00	0.00	0.00
240.0	0.80	40.69	240.0	0.2	0.2	0.3	2.00	2.00	0.00
280.0	1.60	40.69	280.0	0.8	0.7	1.1	2.00	2.00	0.00
320.0	2.40	40.69	320.0	1.9	1.6	2.5	2.00	2.00	0.00
360.0	3.20	40.69	359.9	3.4	2.9	4.5	2.00	2.00	0.00
400.0	4.00	40.69	399.8	5.3	4.6	7.0	2.00	2.00	0.00
400.2	4.00	40.69	400.0	5.3	4.6	7.0	0.00	0.00	0.00
8 5/8"									
440.0	4.80	40.69	439.7	7.6	6.6	10.0	2.01	2.01	0.00
480.0	5.60	40.69	479.6	10.4	8.9	13.7	2.00	2.00	0.00
520.0	6.40	40.69	519.3	13.5	11.6	17.9	2.00	2.00	0.00
560.0	7.20	40.69	559.1	17.1	14.7	22.6	2.00	2.00	0.00
600.0	8.00	40.69	598.7	21.1	18.2	27.9	2.00	2.00	0.00
640.0	8.80	40.69	638.3	25.6	22.0	33.7	2.00	2.00	0.00
680.0	9.60	40.69	677.8	30.4	26.2	40.1	2.00	2.00	0.00
720.0	10.40	40.69	717.1	35.7	30.7	47.1	2.00	2.00	0.00
760.0	11.20	40.69	756.4	41.4	35.6	54.6	2.00	2.00	0.00
800.0	12.00	40.69	795.6	47.5	40.8	62.6	2.00	2.00	0.00
840.0	12.80	40.69	834.7	54.0	46.4	71.2	2.00	2.00	0.00
880.0	13.60	40.69	873.6	60.9	52.4	80.3	2.00	2.00	0.00
920.0	14.40	40.69	912.4	68.2	58.7	90.0	2.00	2.00	0.00
960.0	15.20	40.69	951.1	76.0	65.3	100.2	2.00	2.00	0.00
1,000.0	16.00	40.69	989.6	84.1	72.4	111.0	2.00	2.00	0.00
1,040.0	16.80	40.69	1,028.0	92.7	79.7	122.3	2.00	2.00	0.00
1,080.0	17.60	40.69	1,066.2	101.7	87.4	134.1	2.00	2.00	0.00
1,120.0	18.40	40.69	1,104.3	111.0	95.5	146.5	2.00	2.00	0.00
1,160.0	19.20	40.69	1,142.1	120.8	103.9	159.3	2.00	2.00	0.00
1,200.0	20.00	40.69	1,179.8	131.0	112.6	172.8	2.00	2.00	0.00
1,240.0	20.80	40.69	1,217.3	141.6	121.7	186.7	2.00	2.00	0.00
1,280.0	21.60	40.69	1,254.6	152.5	131.2	201.2	2.00	2.00	0.00
1,320.0	22.40	40.69	1,291.7	163.9	140.9	216.2	2.00	2.00	0.00
1,360.0	23.20	40.69	1,328.6	175.6	151.0	231.7	2.00	2.00	0.00
1,400.0	24.00	40.69	1,365.2	187.8	161.5	247.7	2.00	2.00	0.00
1,440.0	24.80	40.69	1,401.6	200.3	172.3	264.2	2.00	2.00	0.00
1,460.7	25.21	40.69	1,420.4	207.0	178.0	273.0	2.00	2.00	0.00
1,480.0	25.21	40.69	1,437.9	213.2	183.3	281.2	0.00	0.00	0.00
1,520.0	25.21	40.69	1,474.1	226.1	194.4	298.2	0.00	0.00	0.00
1,560.0	25.21	40.69	1,510.2	239.0	205.6	315.3	0.00	0.00	0.00
1,600.0	25.21	40.69	1,546.4	251.9	216.7	332.3	0.00	0.00	0.00
1,640.0	25.21	40.69	1,582.6	264.9	227.8	349.3	0.00	0.00	0.00
1,680.0	25.21	40.69	1,618.8	277.8	238.9	366.4	0.00	0.00	0.00
1,720.0	25.21	40.69	1,655.0	290.7	250.0	383.4	0.00	0.00	0.00
1,760.0	25.21	40.69	1,691.2	303.6	261.1	400.5	0.00	0.00	0.00
1,800.0	25.21	40.69	1,727.4	316.5	272.2	417.5	0.00	0.00	0.00
1,840.0	25.21	40.69	1,763.6	329.5	283.3	434.5	0.00	0.00	0.00
1,880.0	25.21	40.69	1,799.8	342.4	294.4	451.6	0.00	0.00	0.00
1,920.0	25.21	40.69	1,835.9	355.3	305.5	468.6	0.00	0.00	0.00
1,960.0	25.21	40.69	1,872.1	368.2	316.7	485.7	0.00	0.00	0.00
2,000.0	25.21	40.69	1,908.3	381.1	327.8	502.7	0.00	0.00	0.00

Database:	Landmark	Local Co-ordinate Reference:	Well Zisch 23-6-M368
Company:	EnCana Oil & Gas Weld County CO	TVD Reference:	WELL @ 5176.0ft (Original Well Elev)
Project:	SEC.6-T3N-R68W	MD Reference:	WELL @ 5176.0ft (Original Well Elev)
Site:	Zisch 23-6-M368 Pad Sec.6-T3N-R68W	North Reference:	True
Well:	Zisch 23-6-M368	Survey Calculation Method:	Minimum Curvature
Wellbore:	Wellbore #1		
Design:	Plan #1 (1-10-13)		

Planned Survey									
Measured Depth (ft)	Inclination (°)	Azimuth (°)	Vertical Depth (ft)	+N/-S (ft)	+E/-W (ft)	Vertical Section (ft)	Dogleg Rate (°/100ft)	Build Rate (°/100ft)	Turn Rate (°/100ft)
2,040.0	25.21	40.69	1,944.5	394.1	338.9	519.7	0.00	0.00	0.00
2,080.0	25.21	40.69	1,980.7	407.0	350.0	536.8	0.00	0.00	0.00
2,120.0	25.21	40.69	2,016.9	419.9	361.1	553.8	0.00	0.00	0.00
2,160.0	25.21	40.69	2,053.1	432.8	372.2	570.9	0.00	0.00	0.00
2,200.0	25.21	40.69	2,089.3	445.7	383.3	587.9	0.00	0.00	0.00
2,240.0	25.21	40.69	2,125.5	458.7	394.4	604.9	0.00	0.00	0.00
2,280.0	25.21	40.69	2,161.6	471.6	405.5	622.0	0.00	0.00	0.00
2,320.0	25.21	40.69	2,197.8	484.5	416.7	639.0	0.00	0.00	0.00
2,360.0	25.21	40.69	2,234.0	497.4	427.8	656.1	0.00	0.00	0.00
2,400.0	25.21	40.69	2,270.2	510.3	438.9	673.1	0.00	0.00	0.00
2,440.0	25.21	40.69	2,306.4	523.3	450.0	690.1	0.00	0.00	0.00
2,480.0	25.21	40.69	2,342.6	536.2	461.1	707.2	0.00	0.00	0.00
2,520.0	25.21	40.69	2,378.8	549.1	472.2	724.2	0.00	0.00	0.00
2,560.0	25.21	40.69	2,415.0	562.0	483.3	741.3	0.00	0.00	0.00
2,600.0	25.21	40.69	2,451.1	574.9	494.4	758.3	0.00	0.00	0.00
2,640.0	25.21	40.69	2,487.3	587.9	505.5	775.3	0.00	0.00	0.00
2,680.0	25.21	40.69	2,523.5	600.8	516.6	792.4	0.00	0.00	0.00
2,720.0	25.21	40.69	2,559.7	613.7	527.8	809.4	0.00	0.00	0.00
2,760.0	25.21	40.69	2,595.9	626.6	538.9	826.5	0.00	0.00	0.00
2,800.0	25.21	40.69	2,632.1	639.5	550.0	843.5	0.00	0.00	0.00
2,840.0	25.21	40.69	2,668.3	652.5	561.1	860.5	0.00	0.00	0.00
2,880.0	25.21	40.69	2,704.5	665.4	572.2	877.6	0.00	0.00	0.00
2,920.0	25.21	40.69	2,740.7	678.3	583.3	894.6	0.00	0.00	0.00
2,960.0	25.21	40.69	2,776.8	691.2	594.4	911.7	0.00	0.00	0.00
3,000.0	25.21	40.69	2,813.0	704.1	605.5	928.7	0.00	0.00	0.00
3,040.0	25.21	40.69	2,849.2	717.1	616.6	945.7	0.00	0.00	0.00
3,080.0	25.21	40.69	2,885.4	730.0	627.8	962.8	0.00	0.00	0.00
3,120.0	25.21	40.69	2,921.6	742.9	638.9	979.8	0.00	0.00	0.00
3,160.0	25.21	40.69	2,957.8	755.8	650.0	996.9	0.00	0.00	0.00
3,200.0	25.21	40.69	2,994.0	768.7	661.1	1,013.9	0.00	0.00	0.00
3,240.0	25.21	40.69	3,030.2	781.7	672.2	1,030.9	0.00	0.00	0.00
3,280.0	25.21	40.69	3,066.4	794.6	683.3	1,048.0	0.00	0.00	0.00
3,320.0	25.21	40.69	3,102.5	807.5	694.4	1,065.0	0.00	0.00	0.00
3,360.0	25.21	40.69	3,138.7	820.4	705.5	1,082.1	0.00	0.00	0.00
3,400.0	25.21	40.69	3,174.9	833.3	716.6	1,099.1	0.00	0.00	0.00
3,440.0	25.21	40.69	3,211.1	846.3	727.7	1,116.1	0.00	0.00	0.00
3,480.0	25.21	40.69	3,247.3	859.2	738.9	1,133.2	0.00	0.00	0.00
3,520.0	25.21	40.69	3,283.5	872.1	750.0	1,150.2	0.00	0.00	0.00
3,560.0	25.21	40.69	3,319.7	885.0	761.1	1,167.3	0.00	0.00	0.00
3,600.0	25.21	40.69	3,355.9	897.9	772.2	1,184.3	0.00	0.00	0.00
3,640.0	25.21	40.69	3,392.1	910.9	783.3	1,201.3	0.00	0.00	0.00
3,680.0	25.21	40.69	3,428.2	923.8	794.4	1,218.4	0.00	0.00	0.00
3,720.0	25.21	40.69	3,464.4	936.7	805.5	1,235.4	0.00	0.00	0.00
3,760.0	25.21	40.69	3,500.6	949.6	816.6	1,252.5	0.00	0.00	0.00
3,800.0	25.21	40.69	3,536.8	962.5	827.7	1,269.5	0.00	0.00	0.00
3,840.0	25.21	40.69	3,573.0	975.5	838.9	1,286.5	0.00	0.00	0.00
3,880.0	25.21	40.69	3,609.2	988.4	850.0	1,303.6	0.00	0.00	0.00
3,920.0	25.21	40.69	3,645.4	1,001.3	861.1	1,320.6	0.00	0.00	0.00
3,960.0	25.21	40.69	3,681.6	1,014.2	872.2	1,337.7	0.00	0.00	0.00
4,000.0	25.21	40.69	3,717.8	1,027.1	883.3	1,354.7	0.00	0.00	0.00
4,040.0	25.21	40.69	3,753.9	1,040.1	894.4	1,371.7	0.00	0.00	0.00
4,080.0	25.21	40.69	3,790.1	1,053.0	905.5	1,388.8	0.00	0.00	0.00
4,120.0	25.21	40.69	3,826.3	1,065.9	916.6	1,405.8	0.00	0.00	0.00
4,160.0	25.21	40.69	3,862.5	1,078.8	927.7	1,422.9	0.00	0.00	0.00

Database:	Landmark	Local Co-ordinate Reference:	Well Zisch 23-6-M368
Company:	EnCana Oil & Gas Weld County CO	TVD Reference:	WELL @ 5176.0ft (Original Well Elev)
Project:	SEC.6-T3N-R68W	MD Reference:	WELL @ 5176.0ft (Original Well Elev)
Site:	Zisch 23-6-M368 Pad Sec.6-T3N-R68W	North Reference:	True
Well:	Zisch 23-6-M368	Survey Calculation Method:	Minimum Curvature
Wellbore:	Wellbore #1		
Design:	Plan #1 (1-10-13)		

Planned Survey

Measured Depth (ft)	Inclination (°)	Azimuth (°)	Vertical Depth (ft)	+N/-S (ft)	+E/-W (ft)	Vertical Section (ft)	Dogleg Rate (°/100ft)	Build Rate (°/100ft)	Turn Rate (°/100ft)
4,200.0	25.21	40.69	3,898.7	1,091.7	938.8	1,439.9	0.00	0.00	0.00
4,240.0	25.21	40.69	3,934.9	1,104.7	950.0	1,456.9	0.00	0.00	0.00
4,267.8	25.21	40.69	3,960.0	1,113.6	957.7	1,468.8	0.00	0.00	0.00
SUSSEX									
4,280.0	25.21	40.69	3,971.1	1,117.6	961.1	1,474.0	0.00	0.00	0.00
4,320.0	25.21	40.69	4,007.3	1,130.5	972.2	1,491.0	0.00	0.00	0.00
4,329.6	25.21	40.69	4,016.0	1,133.6	974.9	1,495.1	0.00	0.00	0.00
SUSSEX PAY TOP									
4,360.0	25.21	40.69	4,043.5	1,143.4	983.3	1,508.1	0.00	0.00	0.00
4,400.0	25.21	40.69	4,079.6	1,156.3	994.4	1,525.1	0.00	0.00	0.00
4,440.0	25.21	40.69	4,115.8	1,169.3	1,005.5	1,542.1	0.00	0.00	0.00
4,480.0	25.21	40.69	4,152.0	1,182.2	1,016.6	1,559.2	0.00	0.00	0.00
4,516.4	25.21	40.69	4,185.0	1,193.9	1,026.7	1,574.7	0.00	0.00	0.00
SUSSEX MARKER									
4,520.0	25.21	40.69	4,188.2	1,195.1	1,027.7	1,576.2	0.00	0.00	0.00
4,560.0	25.21	40.69	4,224.4	1,208.0	1,038.8	1,593.3	0.00	0.00	0.00
4,600.0	25.21	40.69	4,260.6	1,220.9	1,050.0	1,610.3	0.00	0.00	0.00
4,640.0	25.21	40.69	4,296.8	1,233.9	1,061.1	1,627.3	0.00	0.00	0.00
4,680.0	25.21	40.69	4,333.0	1,246.8	1,072.2	1,644.4	0.00	0.00	0.00
4,720.0	25.21	40.69	4,369.2	1,259.7	1,083.3	1,661.4	0.00	0.00	0.00
4,760.0	25.21	40.69	4,405.3	1,272.6	1,094.4	1,678.5	0.00	0.00	0.00
4,792.8	25.21	40.69	4,435.0	1,283.2	1,103.5	1,692.4	0.00	0.00	0.00
SHANNON									
4,800.0	25.21	40.69	4,441.5	1,285.5	1,105.5	1,695.5	0.00	0.00	0.00
4,840.0	25.21	40.69	4,477.7	1,298.5	1,116.6	1,712.5	0.00	0.00	0.00
4,880.0	25.21	40.69	4,513.9	1,311.4	1,127.7	1,729.6	0.00	0.00	0.00
4,920.0	25.21	40.69	4,550.1	1,324.3	1,138.8	1,746.6	0.00	0.00	0.00
4,960.0	25.21	40.69	4,586.3	1,337.2	1,149.9	1,763.7	0.00	0.00	0.00
5,000.0	25.21	40.69	4,622.5	1,350.1	1,161.1	1,780.7	0.00	0.00	0.00
5,040.0	25.21	40.69	4,658.7	1,363.1	1,172.2	1,797.7	0.00	0.00	0.00
5,063.1	25.21	40.69	4,679.6	1,370.5	1,178.6	1,807.6	0.00	0.00	0.00
5,080.0	24.88	40.69	4,694.9	1,375.9	1,183.3	1,814.7	2.00	-2.00	0.00
5,120.0	24.08	40.69	4,731.3	1,388.5	1,194.1	1,831.3	2.00	-2.00	0.00
5,160.0	23.28	40.69	4,767.9	1,400.7	1,204.5	1,847.4	2.00	-2.00	0.00
5,200.0	22.48	40.69	4,804.8	1,412.5	1,214.7	1,862.9	2.00	-2.00	0.00
5,240.0	21.68	40.69	4,841.8	1,423.9	1,224.5	1,878.0	2.00	-2.00	0.00
5,280.0	20.88	40.69	4,879.1	1,434.9	1,233.9	1,892.5	2.00	-2.00	0.00
5,320.0	20.08	40.69	4,916.6	1,445.5	1,243.1	1,906.5	2.00	-2.00	0.00
5,360.0	19.28	40.69	4,954.2	1,455.7	1,251.8	1,919.9	2.00	-2.00	0.00
5,400.0	18.48	40.69	4,992.1	1,465.5	1,260.3	1,932.9	2.00	-2.00	0.00
5,440.0	17.68	40.69	5,030.1	1,474.9	1,268.4	1,945.3	2.00	-2.00	0.00
5,480.0	16.88	40.69	5,068.3	1,483.9	1,276.1	1,957.2	2.00	-2.00	0.00
5,520.0	16.08	40.69	5,106.7	1,492.5	1,283.5	1,968.5	2.00	-2.00	0.00
5,560.0	15.28	40.69	5,145.2	1,500.7	1,290.6	1,979.3	2.00	-2.00	0.00
5,600.0	14.48	40.69	5,183.8	1,508.5	1,297.3	1,989.6	2.00	-2.00	0.00
5,640.0	13.68	40.69	5,222.6	1,515.9	1,303.6	1,999.3	2.00	-2.00	0.00
5,680.0	12.88	40.69	5,261.6	1,522.8	1,309.6	2,008.5	2.00	-2.00	0.00
5,720.0	12.08	40.69	5,300.6	1,529.4	1,315.2	2,017.1	2.00	-2.00	0.00
5,760.0	11.28	40.69	5,339.8	1,535.5	1,320.5	2,025.2	2.00	-2.00	0.00
5,800.0	10.48	40.69	5,379.1	1,541.3	1,325.4	2,032.8	2.00	-2.00	0.00
5,840.0	9.68	40.69	5,418.5	1,546.6	1,330.0	2,039.8	2.00	-2.00	0.00
5,880.0	8.88	40.69	5,457.9	1,551.5	1,334.2	2,046.2	2.00	-2.00	0.00
5,920.0	8.08	40.69	5,497.5	1,555.9	1,338.0	2,052.1	2.00	-2.00	0.00

Database:	Landmark	Local Co-ordinate Reference:	Well Zisch 23-6-M368
Company:	EnCana Oil & Gas Weld County CO	TVD Reference:	WELL @ 5176.0ft (Original Well Elev)
Project:	SEC.6-T3N-R68W	MD Reference:	WELL @ 5176.0ft (Original Well Elev)
Site:	Zisch 23-6-M368 Pad Sec.6-T3N-R68W	North Reference:	True
Well:	Zisch 23-6-M368	Survey Calculation Method:	Minimum Curvature
Wellbore:	Wellbore #1		
Design:	Plan #1 (1-10-13)		

Planned Survey										
Measured Depth (ft)	Inclination (°)	Azimuth (°)	Vertical Depth (ft)	+N/-S (ft)	+E/-W (ft)	Vertical Section (ft)	Dogleg Rate (°/100ft)	Build Rate (°/100ft)	Turn Rate (°/100ft)	
5,960.0	7.28	40.69	5,537.1	1,560.0	1,341.5	2,057.5	2.00	-2.00	0.00	
6,000.0	6.48	40.69	5,576.9	1,563.6	1,344.6	2,062.3	2.00	-2.00	0.00	
6,040.0	5.68	40.69	5,616.6	1,566.8	1,347.4	2,066.5	2.00	-2.00	0.00	
6,080.0	4.88	40.69	5,656.5	1,569.6	1,349.8	2,070.2	2.00	-2.00	0.00	
6,120.0	4.08	40.69	5,696.3	1,572.0	1,351.8	2,073.3	2.00	-2.00	0.00	
6,160.0	3.28	40.69	5,736.3	1,573.9	1,353.5	2,075.9	2.00	-2.00	0.00	
6,200.0	2.48	40.69	5,776.2	1,575.4	1,354.8	2,077.9	2.00	-2.00	0.00	
6,240.0	1.68	40.69	5,816.2	1,576.5	1,355.8	2,079.3	2.00	-2.00	0.00	
6,280.0	0.88	40.69	5,856.2	1,577.2	1,356.3	2,080.2	2.00	-2.00	0.00	
6,320.0	0.08	40.69	5,896.2	1,577.5	1,356.6	2,080.5	2.00	-2.00	0.00	
6,323.8	0.00	0.00	5,900.0	1,577.5	1,356.6	2,080.5	2.00	-2.00	0.00	
6,360.0	0.00	0.00	5,936.2	1,577.5	1,356.6	2,080.5	0.00	0.00	0.00	
6,400.0	0.00	0.00	5,976.2	1,577.5	1,356.6	2,080.5	0.00	0.00	0.00	
6,440.0	0.00	0.00	6,016.2	1,577.5	1,356.6	2,080.5	0.00	0.00	0.00	
6,480.0	0.00	0.00	6,056.2	1,577.5	1,356.6	2,080.5	0.00	0.00	0.00	
6,520.0	0.00	0.00	6,096.2	1,577.5	1,356.6	2,080.5	0.00	0.00	0.00	
6,558.8	0.00	0.00	6,135.0	1,577.5	1,356.6	2,080.5	0.00	0.00	0.00	
TEEPEE BUTTES										
6,560.0	0.00	0.00	6,136.2	1,577.5	1,356.6	2,080.5	0.00	0.00	0.00	
6,600.0	0.00	0.00	6,176.2	1,577.5	1,356.6	2,080.5	0.00	0.00	0.00	
6,640.0	0.00	0.00	6,216.2	1,577.5	1,356.6	2,080.5	0.00	0.00	0.00	
6,680.0	0.00	0.00	6,256.2	1,577.5	1,356.6	2,080.5	0.00	0.00	0.00	
6,720.0	0.00	0.00	6,296.2	1,577.5	1,356.6	2,080.5	0.00	0.00	0.00	
6,760.0	0.00	0.00	6,336.2	1,577.5	1,356.6	2,080.5	0.00	0.00	0.00	
6,800.0	0.00	0.00	6,376.2	1,577.5	1,356.6	2,080.5	0.00	0.00	0.00	
6,840.0	0.00	0.00	6,416.2	1,577.5	1,356.6	2,080.5	0.00	0.00	0.00	
6,880.0	0.00	0.00	6,456.2	1,577.5	1,356.6	2,080.5	0.00	0.00	0.00	
6,920.0	0.00	0.00	6,496.2	1,577.5	1,356.6	2,080.5	0.00	0.00	0.00	
6,960.0	0.00	0.00	6,536.2	1,577.5	1,356.6	2,080.5	0.00	0.00	0.00	
7,000.0	0.00	0.00	6,576.2	1,577.5	1,356.6	2,080.5	0.00	0.00	0.00	
7,040.0	0.00	0.00	6,616.2	1,577.5	1,356.6	2,080.5	0.00	0.00	0.00	
7,080.0	0.00	0.00	6,656.2	1,577.5	1,356.6	2,080.5	0.00	0.00	0.00	
7,120.0	0.00	0.00	6,696.2	1,577.5	1,356.6	2,080.5	0.00	0.00	0.00	
7,160.0	0.00	0.00	6,736.2	1,577.5	1,356.6	2,080.5	0.00	0.00	0.00	
7,200.0	0.00	0.00	6,776.2	1,577.5	1,356.6	2,080.5	0.00	0.00	0.00	
7,240.0	0.00	0.00	6,816.2	1,577.5	1,356.6	2,080.5	0.00	0.00	0.00	
7,280.0	0.00	0.00	6,856.2	1,577.5	1,356.6	2,080.5	0.00	0.00	0.00	
7,320.0	0.00	0.00	6,896.2	1,577.5	1,356.6	2,080.5	0.00	0.00	0.00	
7,359.8	0.00	0.00	6,936.0	1,577.5	1,356.6	2,080.5	0.00	0.00	0.00	
SHARON SPRINGS										
7,360.0	0.00	0.00	6,936.2	1,577.5	1,356.6	2,080.5	0.00	0.00	0.00	
7,400.0	0.00	0.00	6,976.2	1,577.5	1,356.6	2,080.5	0.00	0.00	0.00	
7,429.8	0.00	0.00	7,006.0	1,577.5	1,356.6	2,080.5	0.00	0.00	0.00	
NIORARA										
7,440.0	0.00	0.00	7,016.2	1,577.5	1,356.6	2,080.5	0.00	0.00	0.00	
7,480.0	0.00	0.00	7,056.2	1,577.5	1,356.6	2,080.5	0.00	0.00	0.00	
7,520.0	0.00	0.00	7,096.2	1,577.5	1,356.6	2,080.5	0.00	0.00	0.00	
7,560.0	0.00	0.00	7,136.2	1,577.5	1,356.6	2,080.5	0.00	0.00	0.00	
7,600.0	0.00	0.00	7,176.2	1,577.5	1,356.6	2,080.5	0.00	0.00	0.00	
7,640.0	0.00	0.00	7,216.2	1,577.5	1,356.6	2,080.5	0.00	0.00	0.00	
7,680.0	0.00	0.00	7,256.2	1,577.5	1,356.6	2,080.5	0.00	0.00	0.00	
7,695.8	0.00	0.00	7,272.0	1,577.5	1,356.6	2,080.5	0.00	0.00	0.00	
FT. HAYES										

Database:	Landmark	Local Co-ordinate Reference:	Well Zisch 23-6-M368
Company:	EnCana Oil & Gas Weld County CO	TVD Reference:	WELL @ 5176.0ft (Original Well Elev)
Project:	SEC.6-T3N-R68W	MD Reference:	WELL @ 5176.0ft (Original Well Elev)
Site:	Zisch 23-6-M368 Pad Sec.6-T3N-R68W	North Reference:	True
Well:	Zisch 23-6-M368	Survey Calculation Method:	Minimum Curvature
Wellbore:	Wellbore #1		
Design:	Plan #1 (1-10-13)		

Planned Survey

Measured Depth (ft)	Inclination (°)	Azimuth (°)	Vertical Depth (ft)	+N/-S (ft)	+E/-W (ft)	Vertical Section (ft)	Dogleg Rate (°/100ft)	Build Rate (°/100ft)	Turn Rate (°/100ft)
7,715.8	0.00	0.00	7,292.0	1,577.5	1,356.6	2,080.5	0.00	0.00	0.00
CODELL									
7,720.0	0.00	0.00	7,296.2	1,577.5	1,356.6	2,080.5	0.00	0.00	0.00
7,739.8	0.00	0.00	7,316.0	1,577.5	1,356.6	2,080.5	0.00	0.00	0.00
FAIRPORT									
7,760.0	0.00	0.00	7,336.2	1,577.5	1,356.6	2,080.5	0.00	0.00	0.00
7,785.8	0.00	0.00	7,362.0	1,577.5	1,356.6	2,080.5	0.00	0.00	0.00
GREENHORN									
7,800.0	0.00	0.00	7,376.2	1,577.5	1,356.6	2,080.5	0.00	0.00	0.00
7,840.0	0.00	0.00	7,416.2	1,577.5	1,356.6	2,080.5	0.00	0.00	0.00
7,880.0	0.00	0.00	7,456.2	1,577.5	1,356.6	2,080.5	0.00	0.00	0.00
7,920.0	0.00	0.00	7,496.2	1,577.5	1,356.6	2,080.5	0.00	0.00	0.00
7,960.0	0.00	0.00	7,536.2	1,577.5	1,356.6	2,080.5	0.00	0.00	0.00
7,986.8	0.00	0.00	7,563.0	1,577.5	1,356.6	2,080.5	0.00	0.00	0.00
GRANEROS									
8,000.0	0.00	0.00	7,576.2	1,577.5	1,356.6	2,080.5	0.00	0.00	0.00
8,040.0	0.00	0.00	7,616.2	1,577.5	1,356.6	2,080.5	0.00	0.00	0.00
8,080.0	0.00	0.00	7,656.2	1,577.5	1,356.6	2,080.5	0.00	0.00	0.00
8,120.0	0.00	0.00	7,696.2	1,577.5	1,356.6	2,080.5	0.00	0.00	0.00
8,155.8	0.00	0.00	7,732.0	1,577.5	1,356.6	2,080.5	0.00	0.00	0.00
MOWRY									
8,160.0	0.00	0.00	7,736.2	1,577.5	1,356.6	2,080.5	0.00	0.00	0.00
8,174.8	0.00	0.00	7,751.0	1,577.5	1,356.6	2,080.5	0.00	0.00	0.00
J-SAND									
8,200.0	0.00	0.00	7,776.2	1,577.5	1,356.6	2,080.5	0.00	0.00	0.00
8,240.0	0.00	0.00	7,816.2	1,577.5	1,356.6	2,080.5	0.00	0.00	0.00
8,255.8	0.00	0.00	7,832.0	1,577.5	1,356.6	2,080.5	0.00	0.00	0.00
SKULL CREEK A MARKER									
8,280.0	0.00	0.00	7,856.2	1,577.5	1,356.6	2,080.5	0.00	0.00	0.00
8,320.0	0.00	0.00	7,896.2	1,577.5	1,356.6	2,080.5	0.00	0.00	0.00
8,324.8	0.00	0.00	7,901.0	1,577.5	1,356.6	2,080.5	0.00	0.00	0.00

Casing Points

Measured Depth (ft)	Vertical Depth (ft)	Name	Casing Diameter (")	Hole Diameter (")
400.2	400.0	8 5/8"	8-5/8	12-1/4

Database:	Landmark	Local Co-ordinate Reference:	Well Zisch 23-6-M368
Company:	EnCana Oil & Gas Weld County CO	TVD Reference:	WELL @ 5176.0ft (Original Well Elev)
Project:	SEC.6-T3N-R68W	MD Reference:	WELL @ 5176.0ft (Original Well Elev)
Site:	Zisch 23-6-M368 Pad Sec.6-T3N-R68W	North Reference:	True
Well:	Zisch 23-6-M368	Survey Calculation Method:	Minimum Curvature
Wellbore:	Wellbore #1		
Design:	Plan #1 (1-10-13)		

Formations

Measured Depth (ft)	Vertical Depth (ft)	Name	Lithology	Dip (°)	Dip Direction (°)
4,267.8	3,960.0	SUSSEX		0.00	
4,329.6	4,016.0	SUSSEX PAY TOP		0.00	
4,516.4	4,185.0	SUSSEX MARKER		0.00	
4,792.8	4,435.0	SHANNON		0.00	
6,558.8	6,135.0	TEEPEE BUTTES		0.00	
7,359.8	6,936.0	SHARON SPRINGS		0.00	
7,429.8	7,006.0	NIOBRARA		0.00	
7,695.8	7,272.0	FT. HAYES		0.00	
7,715.8	7,292.0	CODELL		0.00	
7,739.8	7,316.0	FAIRPORT		0.00	
7,785.8	7,362.0	GREENHORN		0.00	
7,986.8	7,563.0	GRANEROS		0.00	
8,155.8	7,732.0	MOWRY		0.00	
8,174.8	7,751.0	J-SAND		0.00	
8,255.8	7,832.0	SKULL CREEK A MARKER		0.00	