

Anadarko Petroleum Corp.

Weld County, CO (NAD 83)

Sec. 8 T2N-R66W

Kunzman 3N-5HZ

Plan A Rev 0

Plan: Plan A Rev 0 Proposal

Sperry Drilling Services

Proposal Report

08 May, 2012

Well Coordinates: 1,301,808.07 N, 3,194,551.03 E (40° 09' 35.14" N, 104° 48' 14.10" W)

Ground Level: 4,858.00 ft

Local Coordinate Origin:	Centered on Well Kunzman 3N-5HZ
Viewing Datum:	RKB=17ft @ 4875.00ft (Drilling Rig)
TVDs to System:	N
North Reference:	True
Unit System:	API - US Survey Feet - Custom

Geodetic Scale Factor Applied

Version: 2003.16 Build: 431

HALLIBURTON

Project: Weld County, CO (NAD 83)
 Site: Sec. 8 T2N-R66W
 Well: Kunzman 3N-5HZ
 Wellbore: Plan A Rev 0
 Design: Plan A Rev 0 Proposal

Anadarko Petroleum Corp.



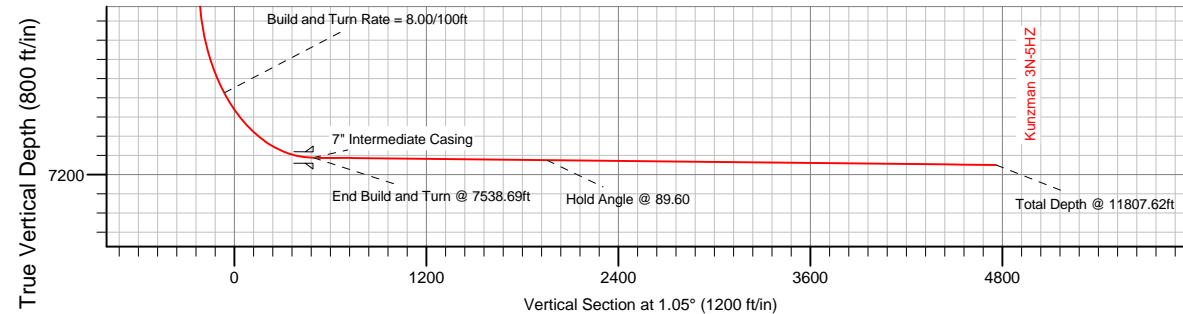
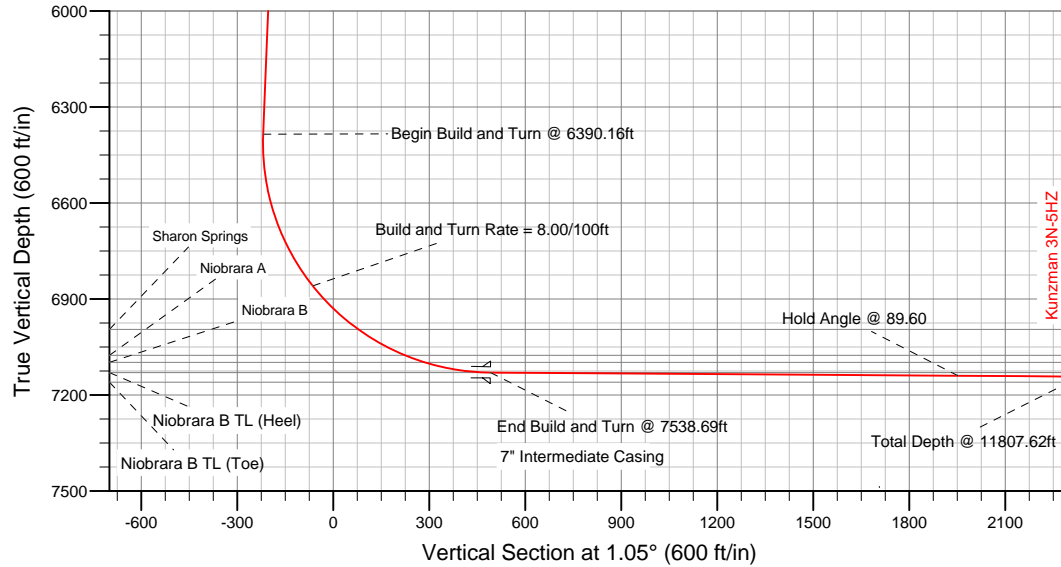
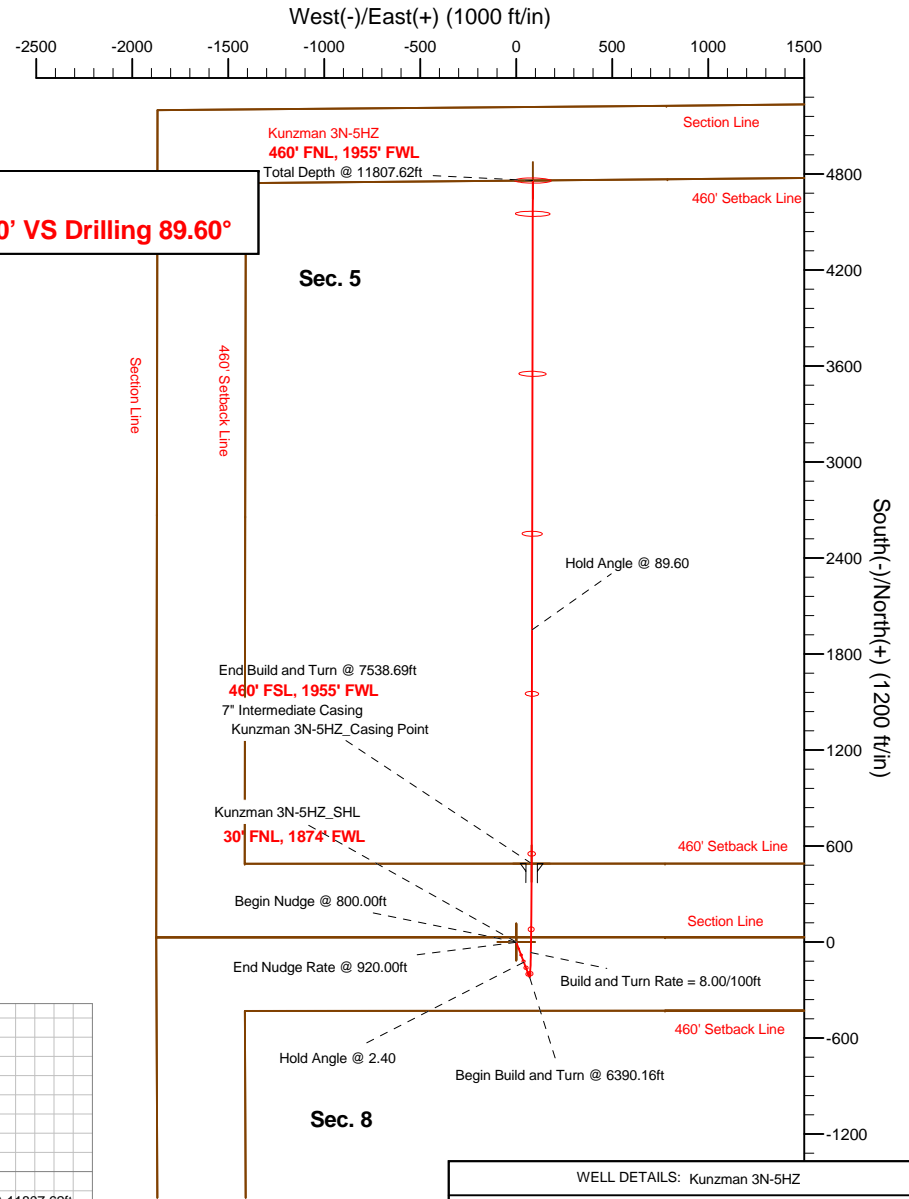
SECTION DETAILS

Sec	MD	Inc	Azi	TVD	+N-/S	+E-/W	DLeg	TFace	VSec	Target
1	0.00	0.00	0.00	0.00	0.00	0.00	0.00	0.00	0.00	
2	800.00	0.00	0.00	800.00	0.00	0.00	0.00	0.00	0.00	
3	920.00	2.40	162.28	919.96	-2.39	0.76	2.00	162.28	-2.38	
4	6390.16	2.40	162.28	6385.33	-220.58	70.49	0.00	0.00	-219.25	
5	7538.69	89.60	0.08	7130.00	490.00	81.00	8.00	-162.18	491.40	Kunzman 3N-5HZ_Casing Point
6	11807.62	89.60	0.08	7160.00	4758.82	87.19	0.00	0.00	4759.62	Kunzman 3N-5HZ_BHL

WELLBORE TARGET DETAILS (LAT/LONG)

Name	TVD	+N-/S	+E-/W	Latitude	Longitude	Shape
Kunzman 3N-5HZ_Sec5 Lines	0.00	0.00	0.00	40.159762	-104.803918	Polygon
Kunzman 3N-5HZ_Sec5 Setback Lines	0.00	0.00	0.00	40.159762	-104.803918	Polygon
Kunzman 3N-5HZ_Sec8 Lines	0.00	0.00	0.00	40.159762	-104.803918	Polygon
Kunzman 3N-5HZ_Sec8 Setback Lines	0.00	0.00	0.00	40.159762	-104.803918	Polygon
Kunzman 3N-5HZ_SHL	0.00	0.00	0.00	40.159762	-104.803918	Point
Kunzman 3N-5HZ_Casing Point	7130.00	81.00	490.00	40.161107	-104.803628	Point
Kunzman 3N-5HZ_BHL	7160.00	4758.82	87.19	40.172825	-104.803606	Point

Target Line:
7133.43' TVDkb @ 0' VS Drilling 89.60°



WELL DETAILS: Kunzman 3N-5HZ	
Ground Level: 4858.00	RKB=17ft @ 4875.00ft (Drilling Rig)
Plan: Plan A Rev 0 Proposal (Kunzman 3N-5HZ/Plan A Rev 0)	
Created By: Fred Hartmann	Date: 05/08/2012
Reviewed: _____	Date: _____

Plan Report for Kunzman 3N-5HZ - Plan A Rev 0 Proposal

Measured Depth (ft)	Inclination (°)	Azimuth (°)	Vertical Depth (ft)	+N/S (ft)	+E/W (ft)	Vertical Section (ft)	Dogleg Rate (°/100ft)	Build Rate (°/100ft)	Turn Rate (°/100ft)	Toolface Azimuth (°)
0.00	0.00	0.00	0.00	0.00	0.00	0.00	0.00	0.00	0.00	0.00
Tie-On to Surface @ 0.00ft - Kunzman 3N-5HZ_SHL - Kunzman 3N-5HZ_Sec5 Lines - Kunzman 3N-5HZ_Sec5 Setback Lines - Ku										
100.00	0.00	0.00	100.00	0.00	0.00	0.00	0.00	0.00	0.00	0.00
200.00	0.00	0.00	200.00	0.00	0.00	0.00	0.00	0.00	0.00	0.00
300.00	0.00	0.00	300.00	0.00	0.00	0.00	0.00	0.00	0.00	0.00
400.00	0.00	0.00	400.00	0.00	0.00	0.00	0.00	0.00	0.00	0.00
Hold Angle @ 0.00										
500.00	0.00	0.00	500.00	0.00	0.00	0.00	0.00	0.00	0.00	0.00
600.00	0.00	0.00	600.00	0.00	0.00	0.00	0.00	0.00	0.00	0.00
700.00	0.00	0.00	700.00	0.00	0.00	0.00	0.00	0.00	0.00	0.00
707.00	0.00	0.00	707.00	0.00	0.00	0.00	0.00	0.00	0.00	0.00
Fox Hills										
800.00	0.00	0.00	800.00	0.00	0.00	0.00	0.00	0.00	0.00	0.00
Begin Nudge @ 800.00ft										
900.00	2.00	162.28	899.98	-1.66	0.53	-1.65	2.00	2.00	0.00	162.28
Nudge Rate = 2.00/100ft										
920.00	2.40	162.28	919.96	-2.39	0.76	-2.38	2.00	2.00	0.00	0.00
End Nudge Rate @ 920.00ft										
1,000.00	2.40	162.28	999.89	-5.58	1.78	-5.55	0.00	0.00	0.00	0.00
1,100.00	2.40	162.28	1,099.81	-9.57	3.06	-9.52	0.00	0.00	0.00	0.00
1,200.00	2.40	162.28	1,199.72	-13.56	4.33	-13.48	0.00	0.00	0.00	0.00
1,300.00	2.40	162.28	1,299.63	-17.55	5.61	-17.44	0.00	0.00	0.00	0.00
1,400.00	2.40	162.28	1,399.54	-21.54	6.88	-21.41	0.00	0.00	0.00	0.00
1,500.00	2.40	162.28	1,499.46	-25.53	8.16	-25.37	0.00	0.00	0.00	0.00
1,600.00	2.40	162.28	1,599.37	-29.52	9.43	-29.34	0.00	0.00	0.00	0.00
1,700.00	2.40	162.28	1,699.28	-33.51	10.71	-33.30	0.00	0.00	0.00	0.00
1,800.00	2.40	162.28	1,799.19	-37.49	11.98	-37.27	0.00	0.00	0.00	0.00
1,900.00	2.40	162.28	1,899.11	-41.48	13.26	-41.23	0.00	0.00	0.00	0.00
2,000.00	2.40	162.28	1,999.02	-45.47	14.53	-45.20	0.00	0.00	0.00	0.00
2,100.00	2.40	162.28	2,098.93	-49.46	15.81	-49.16	0.00	0.00	0.00	0.00
2,200.00	2.40	162.28	2,198.84	-53.45	17.08	-53.13	0.00	0.00	0.00	0.00
2,300.00	2.40	162.28	2,298.75	-57.44	18.36	-57.09	0.00	0.00	0.00	0.00
2,400.00	2.40	162.28	2,398.67	-61.43	19.63	-61.06	0.00	0.00	0.00	0.00
2,500.00	2.40	162.28	2,498.58	-65.41	20.91	-65.02	0.00	0.00	0.00	0.00
2,600.00	2.40	162.28	2,598.49	-69.40	22.18	-68.99	0.00	0.00	0.00	0.00
2,700.00	2.40	162.28	2,698.40	-73.39	23.45	-72.95	0.00	0.00	0.00	0.00
2,800.00	2.40	162.28	2,798.32	-77.38	24.73	-76.91	0.00	0.00	0.00	0.00
2,900.00	2.40	162.28	2,898.23	-81.37	26.00	-80.88	0.00	0.00	0.00	0.00
3,000.00	2.40	162.28	2,998.14	-85.36	27.28	-84.84	0.00	0.00	0.00	0.00
3,100.00	2.40	162.28	3,098.05	-89.35	28.55	-88.81	0.00	0.00	0.00	0.00
3,200.00	2.40	162.28	3,197.97	-93.34	29.83	-92.77	0.00	0.00	0.00	0.00
3,300.00	2.40	162.28	3,297.88	-97.32	31.10	-96.74	0.00	0.00	0.00	0.00
3,400.00	2.40	162.28	3,397.79	-101.31	32.38	-100.70	0.00	0.00	0.00	0.00
3,500.00	2.40	162.28	3,497.70	-105.30	33.65	-104.67	0.00	0.00	0.00	0.00
3,600.00	2.40	162.28	3,597.61	-109.29	34.93	-108.63	0.00	0.00	0.00	0.00
3,700.00	2.40	162.28	3,697.53	-113.28	36.20	-112.60	0.00	0.00	0.00	0.00
3,800.00	2.40	162.28	3,797.44	-117.27	37.48	-116.56	0.00	0.00	0.00	0.00
3,900.00	2.40	162.28	3,897.35	-121.26	38.75	-120.53	0.00	0.00	0.00	0.00
3,926.67	2.40	162.28	3,924.00	-122.32	39.09	-121.58	0.00	0.00	0.00	0.00
Parkmann										
4,000.00	2.40	162.28	3,997.26	-125.24	40.03	-124.49	0.00	0.00	0.00	0.00
Hold Angle @ 2.40										
4,100.00	2.40	162.28	4,097.18	-129.23	41.30	-128.46	0.00	0.00	0.00	0.00
4,200.00	2.40	162.28	4,197.09	-133.22	42.57	-132.42	0.00	0.00	0.00	0.00
4,300.00	2.40	162.28	4,297.00	-137.21	43.85	-136.38	0.00	0.00	0.00	0.00
4,327.02	2.40	162.28	4,324.00	-138.29	44.19	-137.46	0.00	0.00	0.00	0.00
Sussex										
4,400.00	2.40	162.28	4,396.91	-141.20	45.12	-140.35	0.00	0.00	0.00	0.00

Plan Report for Kunzman 3N-5HZ - Plan A Rev 0 Proposal

Measured Depth (ft)	Inclination (°)	Azimuth (°)	Vertical Depth (ft)	+N/-S (ft)	+E/-W (ft)	Vertical Section (ft)	Dogleg Rate (°/100ft)	Build Rate (°/100ft)	Turn Rate (°/100ft)	Toolface Azimuth (°)
4,500.00	2.40	162.28	4,496.82	-145.19	46.40	-144.31	0.00	0.00	0.00	0.00
4,600.00	2.40	162.28	4,596.74	-149.18	47.67	-148.28	0.00	0.00	0.00	0.00
4,700.00	2.40	162.28	4,696.65	-153.17	48.95	-152.24	0.00	0.00	0.00	0.00
4,800.00	2.40	162.28	4,796.56	-157.15	50.22	-156.21	0.00	0.00	0.00	0.00
4,900.00	2.40	162.28	4,896.47	-161.14	51.50	-160.17	0.00	0.00	0.00	0.00
5,000.00	2.40	162.28	4,996.39	-165.13	52.77	-164.14	0.00	0.00	0.00	0.00
5,100.00	2.40	162.28	5,096.30	-169.12	54.05	-168.10	0.00	0.00	0.00	0.00
5,200.00	2.40	162.28	5,196.21	-173.11	55.32	-172.07	0.00	0.00	0.00	0.00
5,300.00	2.40	162.28	5,296.12	-177.10	56.60	-176.03	0.00	0.00	0.00	0.00
5,400.00	2.40	162.28	5,396.04	-181.09	57.87	-180.00	0.00	0.00	0.00	0.00
5,500.00	2.40	162.28	5,495.95	-185.08	59.15	-183.96	0.00	0.00	0.00	0.00
5,600.00	2.40	162.28	5,595.86	-189.06	60.42	-187.93	0.00	0.00	0.00	0.00
5,700.00	2.40	162.28	5,695.77	-193.05	61.70	-191.89	0.00	0.00	0.00	0.00
5,800.00	2.40	162.28	5,795.68	-197.04	62.97	-195.85	0.00	0.00	0.00	0.00
5,900.00	2.40	162.28	5,895.60	-201.03	64.24	-199.82	0.00	0.00	0.00	0.00
6,000.00	2.40	162.28	5,995.51	-205.02	65.52	-203.78	0.00	0.00	0.00	0.00
6,100.00	2.40	162.28	6,095.42	-209.01	66.79	-207.75	0.00	0.00	0.00	0.00
6,200.00	2.40	162.28	6,195.33	-213.00	68.07	-211.71	0.00	0.00	0.00	0.00
6,300.00	2.40	162.28	6,295.25	-216.98	69.34	-215.68	0.00	0.00	0.00	0.00
6,390.16	2.40	162.28	6,385.33	-220.58	70.49	-219.25	0.00	0.00	0.00	0.00
Begin Build and Turn @ 6390.16ft										
6,400.00	1.67	153.97	6,395.16	-220.91	70.62	-219.57	8.00	-7.44	-84.38	-162.18
6,500.00	6.54	6.49	6,494.98	-216.55	71.90	-215.19	8.00	4.88	-147.48	-153.89
6,600.00	14.52	2.91	6,593.21	-198.33	73.19	-196.96	8.00	7.98	-3.58	-6.46
6,700.00	22.51	1.85	6,687.96	-166.63	74.44	-165.24	8.00	7.99	-1.06	-2.93
6,800.00	30.51	1.32	6,777.37	-122.04	75.65	-120.64	8.00	8.00	-0.53	-1.92
6,900.00	38.51	1.00	6,859.71	-65.45	76.78	-64.03	8.00	8.00	-0.32	-1.45
Build and Turn Rate = 8.00/100ft										
7,000.00	46.51	0.77	6,933.37	2.06	77.82	3.49	8.00	8.00	-0.23	-1.18
7,096.71	54.24	0.61	6,995.00	76.49	78.71	77.92	8.00	8.00	-0.17	-1.01
Sharon Springs										
7,100.00	54.51	0.60	6,996.91	79.16	78.74	80.59	8.00	8.00	-0.16	-0.90
7,200.00	62.50	0.46	7,049.11	164.36	79.52	165.79	8.00	8.00	-0.14	-0.90
7,263.77	67.61	0.38	7,076.00	222.16	79.94	223.58	8.00	8.00	-0.12	-0.83
Niobrara A										
7,300.00	70.50	0.34	7,088.95	255.99	80.16	257.41	8.00	8.00	-0.12	-0.79
7,328.75	72.80	0.31	7,098.00	283.28	80.31	284.70	8.00	8.00	-0.11	-0.78
Niobrara B										
7,400.00	78.50	0.23	7,115.65	352.27	80.63	353.69	8.00	8.00	-0.11	-0.77
7,500.00	86.50	0.12	7,128.68	451.34	80.93	452.75	8.00	8.00	-0.10	-0.75
7,538.69	89.60	0.08	7,130.00	490.00	81.00	491.40	8.00	8.00	-0.10	-0.74
End Build and Turn @ 7538.69ft - Niobrara B TL (Heel) - 7" Intermediate Casing - Kunzman 3N-5HZ_Casing Point										
7,600.00	89.60	0.08	7,130.43	551.31	81.09	552.70	0.00	0.00	0.00	-0.73
7,700.00	89.60	0.08	7,131.13	651.31	81.23	652.69	0.00	0.00	0.00	0.00
7,800.00	89.60	0.08	7,131.84	751.30	81.38	752.67	0.00	0.00	0.00	0.00
7,900.00	89.60	0.08	7,132.54	851.30	81.52	852.65	0.00	0.00	0.00	0.00
8,000.00	89.60	0.08	7,133.24	951.30	81.67	952.64	0.00	0.00	0.00	0.00
8,100.00	89.60	0.08	7,133.94	1,051.30	81.81	1,052.62	0.00	0.00	0.00	0.00
8,200.00	89.60	0.08	7,134.65	1,151.29	81.96	1,152.60	0.00	0.00	0.00	0.00
8,300.00	89.60	0.08	7,135.35	1,251.29	82.10	1,252.59	0.00	0.00	0.00	0.00
8,400.00	89.60	0.08	7,136.05	1,351.29	82.25	1,352.57	0.00	0.00	0.00	0.00
8,500.00	89.60	0.08	7,136.76	1,451.29	82.39	1,452.55	0.00	0.00	0.00	0.00
8,600.00	89.60	0.08	7,137.46	1,551.28	82.54	1,552.54	0.00	0.00	0.00	0.00
8,700.00	89.60	0.08	7,138.16	1,651.28	82.68	1,652.52	0.00	0.00	0.00	0.00
8,800.00	89.60	0.08	7,138.86	1,751.28	82.83	1,752.50	0.00	0.00	0.00	0.00
8,900.00	89.60	0.08	7,139.57	1,851.28	82.97	1,852.49	0.00	0.00	0.00	0.00
9,000.00	89.60	0.08	7,140.27	1,951.27	83.12	1,952.47	0.00	0.00	0.00	0.00
Hold Angle @ 89.60										

Plan Report for Kunzman 3N-5HZ - Plan A Rev 0 Proposal

Measured Depth (ft)	Inclination (°)	Azimuth (°)	Vertical Depth (ft)	+N/-S (ft)	+E/-W (ft)	Vertical Section (ft)	Dogleg Rate (°/100ft)	Build Rate (°/100ft)	Turn Rate (°/100ft)	Tooface Azimuth (°)
9,100.00	89.60	0.08	7,140.97	2,051.27	83.26	2,052.45	0.00	0.00	0.00	0.00
9,200.00	89.60	0.08	7,141.67	2,151.27	83.41	2,152.44	0.00	0.00	0.00	0.00
9,300.00	89.60	0.08	7,142.38	2,251.27	83.55	2,252.42	0.00	0.00	0.00	0.00
9,400.00	89.60	0.08	7,143.08	2,351.26	83.70	2,352.40	0.00	0.00	0.00	0.00
9,500.00	89.60	0.08	7,143.78	2,451.26	83.84	2,452.39	0.00	0.00	0.00	0.00
9,600.00	89.60	0.08	7,144.49	2,551.26	83.99	2,552.37	0.00	0.00	0.00	0.00
9,700.00	89.60	0.08	7,145.19	2,651.26	84.13	2,652.35	0.00	0.00	0.00	0.00
9,800.00	89.60	0.08	7,145.89	2,751.25	84.28	2,752.34	0.00	0.00	0.00	0.00
9,900.00	89.60	0.08	7,146.59	2,851.25	84.42	2,852.32	0.00	0.00	0.00	0.00
10,000.00	89.60	0.08	7,147.30	2,951.25	84.57	2,952.30	0.00	0.00	0.00	0.00
10,100.00	89.60	0.08	7,148.00	3,051.25	84.71	3,052.29	0.00	0.00	0.00	0.00
10,200.00	89.60	0.08	7,148.70	3,151.24	84.86	3,152.27	0.00	0.00	0.00	0.00
10,300.00	89.60	0.08	7,149.41	3,251.24	85.00	3,252.25	0.00	0.00	0.00	0.00
10,400.00	89.60	0.08	7,150.11	3,351.24	85.15	3,352.24	0.00	0.00	0.00	0.00
10,500.00	89.60	0.08	7,150.81	3,451.24	85.29	3,452.22	0.00	0.00	0.00	0.00
10,600.00	89.60	0.08	7,151.51	3,551.23	85.44	3,552.20	0.00	0.00	0.00	0.00
10,700.00	89.60	0.08	7,152.22	3,651.23	85.58	3,652.19	0.00	0.00	0.00	0.00
10,800.00	89.60	0.08	7,152.92	3,751.23	85.73	3,752.17	0.00	0.00	0.00	0.00
10,900.00	89.60	0.08	7,153.62	3,851.22	85.87	3,852.15	0.00	0.00	0.00	0.00
11,000.00	89.60	0.08	7,154.32	3,951.22	86.02	3,952.13	0.00	0.00	0.00	0.00
11,100.00	89.60	0.08	7,155.03	4,051.22	86.16	4,052.12	0.00	0.00	0.00	0.00
11,200.00	89.60	0.08	7,155.73	4,151.22	86.31	4,152.10	0.00	0.00	0.00	0.00
11,300.00	89.60	0.08	7,156.43	4,251.21	86.45	4,252.08	0.00	0.00	0.00	0.00
11,400.00	89.60	0.08	7,157.14	4,351.21	86.60	4,352.07	0.00	0.00	0.00	0.00
11,500.00	89.60	0.08	7,157.84	4,451.21	86.74	4,452.05	0.00	0.00	0.00	0.00
11,600.00	89.60	0.08	7,158.54	4,551.21	86.89	4,552.03	0.00	0.00	0.00	0.00
11,700.00	89.60	0.08	7,159.24	4,651.20	87.03	4,652.02	0.00	0.00	0.00	0.00
11,800.00	89.60	0.08	7,159.95	4,751.20	87.18	4,752.00	0.00	0.00	0.00	0.00
11,807.62	89.60	0.08	7,160.00	4,758.82	87.19	4,759.62	0.00	0.00	0.00	0.00

Niobrara B TL (Toe) - Kunzman 3N-5HZ_BHL

Plan Annotations

Measured Depth (ft)	Vertical Depth (ft)	Local Coordinates		Comment
		+N/-S (ft)	+E/-W (ft)	
0.00	0.00	0.00	0.00	Tie-On to Surface @ 0.00ft
400.00	400.00	0.00	0.00	Hold Angle @ 0.00
800.00	800.00	0.00	0.00	Begin Nudge @ 800.00ft
900.00	899.98	-1.66	0.53	Nudge Rate = 2.00/100ft
920.00	919.96	-2.39	0.76	End Nudge Rate @ 920.00ft
4,000.00	3,997.26	-125.24	40.03	Hold Angle @ 2.40
6,390.16	6,385.33	-220.58	70.49	Begin Build and Turn @ 6390.16ft
6,900.00	6,859.71	-65.45	76.78	Build and Turn Rate = 8.00/100ft
7,538.69	7,130.00	490.00	81.00	End Build and Turn @ 7538.69ft
9,000.00	7,140.27	1,951.27	83.12	Hold Angle @ 89.60
11,807.62	7,160.00	4,758.82	87.19	Total Depth @ 11807.62ft

Vertical Section Information

Angle Type	Target	Azimuth (°)	Origin Type	+N/-S (ft)	+E/-W (ft)	Start TVD (ft)
Target	Kunzman 3N-5HZ_BHL	1.05	Slot	0.00	0.00	7,160.00

Plan Report for Kunzman 3N-5HZ - Plan A Rev 0 Proposal**Survey tool program**

From (ft)	To (ft)	Survey/Plan	Survey Tool
0.00	11,807.62	Plan A Rev 0 Proposal	MWD

Casing Details

Measured Depth (ft)	Vertical Depth (ft)	Name	Casing Diameter (")	Hole Diameter (")
7,538.69	7,130.00	7" Intermediate Casing	7	8-3/4

Formation Details

Measured Depth (ft)	Vertical Depth (ft)	Name	Lithology	Dip (°)	Dip Direction (°)
707.00	707.00	Fox Hills		0.00	
3,926.67	3,924.00	Parkmann		0.00	
4,327.02	4,324.00	Sussex		0.00	
7,096.71	6,995.00	Sharon Springs		0.00	
7,263.77	7,076.00	Niobrara A		0.00	
7,328.75	7,098.00	Niobrara B		0.00	
7,538.69	7,130.00	Niobrara B TL (Heel)		0.00	
11,807.62	7,160.00	Niobrara B TL (Toe)		0.00	

Targets associated with this wellbore

Target Name	TVD (ft)	+N/-S (ft)	+E/-W (ft)	Shape
Kunzman 3N-5HZ_SHL	0.00	0.00	0.00	Point
Kunzman 3N-5HZ_Sec8 Lines	0.00	0.00	0.00	Polygon
Kunzman 3N-5HZ_BHL	7,160.00	4,758.82	87.19	Point
Kunzman 3N-5HZ_Sec5 Setback Lines	0.00	0.00	0.00	Polygon
Kunzman 3N-5HZ_Sec8 Setback Lines	0.00	0.00	0.00	Polygon
Kunzman 3N-5HZ_Sec5 Lines	0.00	0.00	0.00	Polygon
Kunzman 3N-5HZ_Casing Point	7,130.00	490.00	81.00	Point

North Reference Sheet for Sec. 8 T2N-R66W - Kunzman 3N-5HZ - Plan A Rev 0

All data is in US Feet unless otherwise stated. Directions and Coordinates are relative to True North Reference.
 Vertical Depths are relative to RKB=17ft @ 4875.00ft (Drilling Rig). Northing and Easting are relative to Kunzman 3N-5HZ
 Coordinate System is US State Plane 1983, Colorado Northern Zone using datum North American Datum 1983, ellipsoid GRS 1980
 Projection method is Lambert Conformal Conic (2 parallel)
 Central Meridian is -105.50°, Longitude Origin:0.000000°, Latitude Origin:40.783333°
 False Easting: 3,000,000.00ft, False Northing: 1,000,000.00ft, Scale Reduction: 0.99995810

Grid Coordinates of Well: 1,301,808.07 ft N, 3,194,551.03 ft E
 Geographical Coordinates of Well: 40° 09' 35.14" N, 104° 48' 14.10" W
 Grid Convergence at Surface is: 0.45°

Based upon Minimum Curvature type calculations, at a Measured Depth of 11,807.62ft
 the Bottom Hole Displacement is 4,759.62ft in the Direction of 1.05° (True).
 Magnetic Convergence at surface is: -8.28° (8 May 2012, , BGGM2011)

