

Anadarko Petroleum Corp.

Weld County, CO (NAD 83)

Sec. 18-T2N-R65W

Crowder 36N-18HZ

Plan B Rev 0

Plan: Plan B Rev 0 Permit

Sperry Drilling Services

Proposal Report

09 January, 2013

Well Coordinates: 1,296,734.42 N, 3,223,235.73 E (40° 08' 42.62" N, 104° 42' 05.24" W)

Ground Level: 4,958.00 ft

Local Coordinate Origin: Centered on Well Crowder 36N-18HZ

Viewing Datum: RKB=17 @ 4975.00ft (Drilling Rig)

TVDs to System: N

North Reference: True

Unit System: API - US Survey Feet - Custom

Geodetic Scale Factor Applied

Version: 2003.16 Build: 43I

HALLIBURTON

Project: Weld County, CO (NAD 83)
Site: Sec. 18-T2N-R65W
Well: Crowder 36N-18HZ
Wellbore: Plan B Rev 0
Design: Plan B Rev 0 Permit

Anadarko Petroleum Corp.

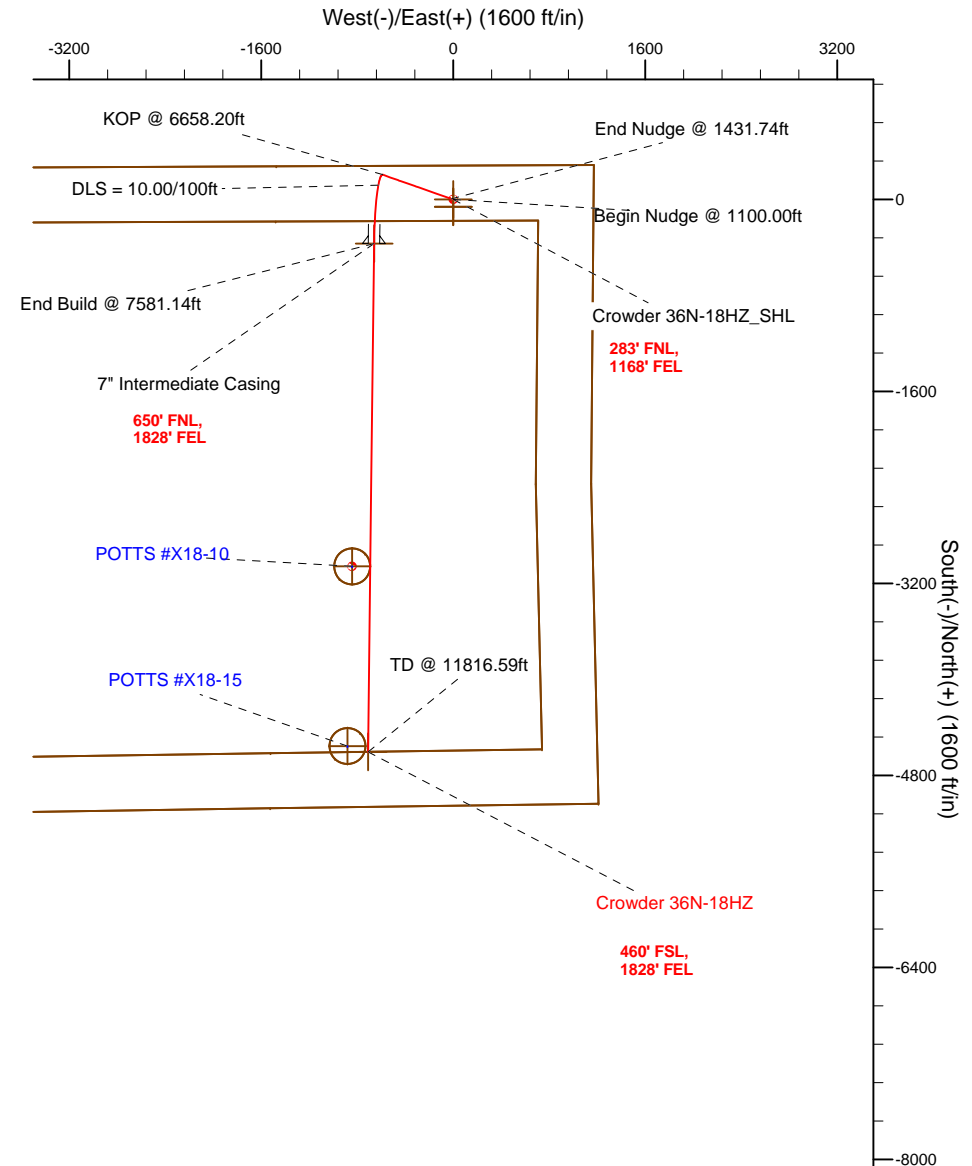
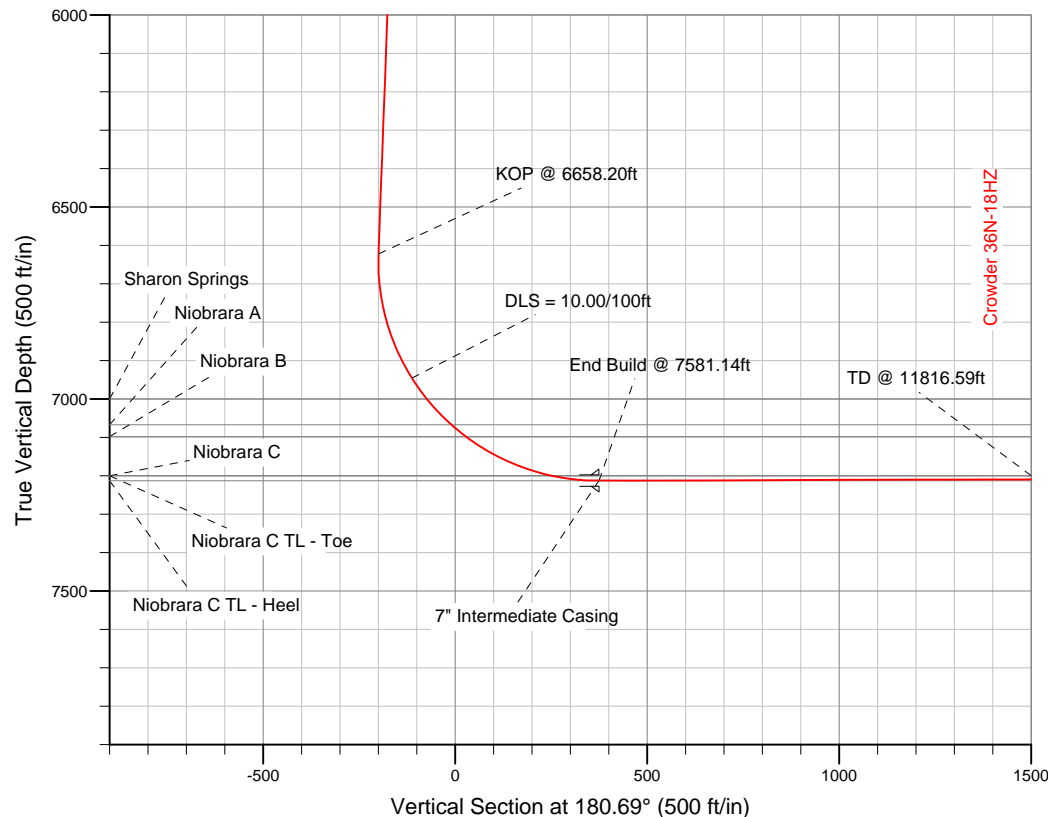
HALLIBURTON
Sperry Drilling

SECTION DETAILS

Sec	MD	Inc	Azi	TVD	+N/-S	+E/-W	DLeg	TFace	VSec	Target
1	0.00	0.00	0.00	0.00	0.00	0.00	0.00	0.00	0.00	
2	1100.00	0.00	0.00	1100.00	0.00	0.00	0.00	0.00	0.00	
3	1431.74	6.63	289.35	1431.00	6.36	-18.10	2.00	289.35	-6.14	
4	6658.20	6.63	289.35	6622.45	206.49	-587.84	0.00	0.00	-199.40	
5	7581.14	90.18	180.69	7213.00	-367.00	-660.00	10.00	-108.53	374.92	Crowder 36N-18HZ_CP
6	11816.59	90.18	180.69	7200.00	-4602.12	-710.80	0.00	0.00	4610.35	Crowder 36N-18HZ_BHL

WELLBORE TARGET DETAILS (LAT/LONG)

Name	TVD	+N/-S	+E/-W	Latitude	Longitude	Shape
Crowder 36N-18HZ_SHL	0.00	0.00	0.00	40.145171	-104.701456	Point
Potts #X18-10	0.00	-3056.78	-842.72	40.136780	-104.704470	Circle (Radius: 150.00)
Potts #X18-15 - As Drilled	0.00	-4554.03	-881.92	40.132670	-104.704610	Circle (Radius: 150.00)
Crowder 37N-18HZ_Section Lines	1.00	-60.10	-0.56	40.145006	-104.701458	Polygon
Crowder 37N-18HZ_Setback Lines	1.00	-60.10	-0.56	40.145006	-104.701458	Polygon
Crowder 36N-18HZ_BHL	7200.00	-4602.12	-710.80	40.132538	-104.703998	Point
Crowder 36N-18HZ_CP	7213.00	-367.00	-660.00	40.144164	-104.703817	Point



*Footages are calculated from
SHL and assume section
lines parallel N/S and E/W.

WELL DETAILS: Crowder 36N-18HZ

Ground Level: 4958.00 RKB=17 @ 4975.00ft (Drilling Rig)

Plan: Plan B Rev 0 Permit (Crowder 36N-18HZ/Plan B Rev 0)

Created By: Fred Hartmann Date: 01/08/2013
Reviewed: Date:

Plan Report for Crowder 36N-18HZ - Plan B Rev 0 Permit

Measured Depth (ft)	Inclination (°)	Azimuth (°)	Vertical Depth (ft)	+N/-S (ft)	+E/-W (ft)	Vertical Section (ft)	Dogleg Rate (°/100ft)	Build Rate (°/100ft)	Turn Rate (°/100ft)	Toolface Azimuth (°)
0.00	0.00	0.00	0.00	0.00	0.00	0.00	0.00	0.00	0.00	0.00
100.00	0.00	0.00	100.00	0.00	0.00	0.00	0.00	0.00	0.00	0.00
200.00	0.00	0.00	200.00	0.00	0.00	0.00	0.00	0.00	0.00	0.00
300.00	0.00	0.00	300.00	0.00	0.00	0.00	0.00	0.00	0.00	0.00
400.00	0.00	0.00	400.00	0.00	0.00	0.00	0.00	0.00	0.00	0.00
500.00	0.00	0.00	500.00	0.00	0.00	0.00	0.00	0.00	0.00	0.00
600.00	0.00	0.00	600.00	0.00	0.00	0.00	0.00	0.00	0.00	0.00
700.00	0.00	0.00	700.00	0.00	0.00	0.00	0.00	0.00	0.00	0.00
800.00	0.00	0.00	800.00	0.00	0.00	0.00	0.00	0.00	0.00	0.00
900.00	0.00	0.00	900.00	0.00	0.00	0.00	0.00	0.00	0.00	0.00
1,000.00	0.00	0.00	1,000.00	0.00	0.00	0.00	0.00	0.00	0.00	0.00
1,100.00	0.00	0.00	1,100.00	0.00	0.00	0.00	0.00	0.00	0.00	0.00
Begin Nudge @ 1100.00ft										
1,200.00	2.00	289.35	1,199.98	0.58	-1.65	-0.56	2.00	2.00	0.00	289.35
1,300.00	4.00	289.35	1,299.84	2.31	-6.58	-2.23	2.00	2.00	0.00	0.00
1,400.00	6.00	289.35	1,399.45	5.20	-14.81	-5.02	2.00	2.00	0.00	0.00
1,431.74	6.63	289.35	1,431.00	6.36	-18.10	-6.14	2.00	2.00	0.00	0.00
End Nudge @ 1431.74ft										
1,500.00	6.63	289.35	1,498.80	8.97	-25.54	-8.66	0.00	0.00	0.00	0.00
1,600.00	6.63	289.35	1,598.13	12.80	-36.44	-12.36	0.00	0.00	0.00	0.00
1,700.00	6.63	289.35	1,697.46	16.63	-47.34	-16.06	0.00	0.00	0.00	0.00
1,800.00	6.63	289.35	1,796.79	20.46	-58.25	-19.76	0.00	0.00	0.00	0.00
1,900.00	6.63	289.35	1,896.12	24.29	-69.15	-23.45	0.00	0.00	0.00	0.00
2,000.00	6.63	289.35	1,995.45	28.12	-80.05	-27.15	0.00	0.00	0.00	0.00
2,100.00	6.63	289.35	2,094.78	31.95	-90.95	-30.85	0.00	0.00	0.00	0.00
2,200.00	6.63	289.35	2,194.11	35.78	-101.85	-34.55	0.00	0.00	0.00	0.00
2,300.00	6.63	289.35	2,293.44	39.61	-112.75	-38.25	0.00	0.00	0.00	0.00
2,400.00	6.63	289.35	2,392.77	43.44	-123.65	-41.94	0.00	0.00	0.00	0.00
2,500.00	6.63	289.35	2,492.10	47.26	-134.55	-45.64	0.00	0.00	0.00	0.00
2,600.00	6.63	289.35	2,591.44	51.09	-145.45	-49.34	0.00	0.00	0.00	0.00
2,700.00	6.63	289.35	2,690.77	54.92	-156.35	-53.04	0.00	0.00	0.00	0.00
2,800.00	6.63	289.35	2,790.10	58.75	-167.26	-56.73	0.00	0.00	0.00	0.00
2,900.00	6.63	289.35	2,889.43	62.58	-178.16	-60.43	0.00	0.00	0.00	0.00
3,000.00	6.63	289.35	2,988.76	66.41	-189.06	-64.13	0.00	0.00	0.00	0.00
3,100.00	6.63	289.35	3,088.09	70.24	-199.96	-67.83	0.00	0.00	0.00	0.00
3,200.00	6.63	289.35	3,187.42	74.07	-210.86	-71.52	0.00	0.00	0.00	0.00
3,300.00	6.63	289.35	3,286.75	77.90	-221.76	-75.22	0.00	0.00	0.00	0.00
3,400.00	6.63	289.35	3,386.08	81.73	-232.66	-78.92	0.00	0.00	0.00	0.00
3,500.00	6.63	289.35	3,485.41	85.56	-243.56	-82.62	0.00	0.00	0.00	0.00
3,600.00	6.63	289.35	3,584.74	89.39	-254.46	-86.31	0.00	0.00	0.00	0.00
3,700.00	6.63	289.35	3,684.07	93.21	-265.36	-90.01	0.00	0.00	0.00	0.00
3,800.00	6.63	289.35	3,783.40	97.04	-276.27	-93.71	0.00	0.00	0.00	0.00
3,900.00	6.63	289.35	3,882.73	100.87	-287.17	-97.41	0.00	0.00	0.00	0.00
4,000.00	6.63	289.35	3,982.06	104.70	-298.07	-101.11	0.00	0.00	0.00	0.00
4,019.07	6.63	289.35	4,001.00	105.43	-300.15	-101.81	0.00	0.00	0.00	0.00
Parkman										
4,100.00	6.63	289.35	4,081.39	108.53	-308.97	-104.80	0.00	0.00	0.00	0.00
4,200.00	6.63	289.35	4,180.72	112.36	-319.87	-108.50	0.00	0.00	0.00	0.00
4,300.00	6.63	289.35	4,280.05	116.19	-330.77	-112.20	0.00	0.00	0.00	0.00
4,400.00	6.63	289.35	4,379.38	120.02	-341.67	-115.90	0.00	0.00	0.00	0.00
4,500.00	6.63	289.35	4,478.71	123.85	-352.57	-119.59	0.00	0.00	0.00	0.00
4,600.00	6.63	289.35	4,578.04	127.68	-363.47	-123.29	0.00	0.00	0.00	0.00
4,615.06	6.63	289.35	4,593.00	128.25	-365.12	-123.85	0.00	0.00	0.00	0.00
Sussex										
4,700.00	6.63	289.35	4,677.37	131.51	-374.37	-126.99	0.00	0.00	0.00	0.00
4,800.00	6.63	289.35	4,776.70	135.34	-385.28	-130.69	0.00	0.00	0.00	0.00
4,900.00	6.63	289.35	4,876.03	139.16	-396.18	-134.38	0.00	0.00	0.00	0.00
5,000.00	6.63	289.35	4,975.36	142.99	-407.08	-138.08	0.00	0.00	0.00	0.00

Plan Report for Crowder 36N-18HZ - Plan B Rev 0 Permit

Measured Depth (ft)	Inclination (°)	Azimuth (°)	Vertical Depth (ft)	+N-S (ft)	+E-W (ft)	Vertical Section (ft)	Dogleg Rate (°/100ft)	Build Rate (°/100ft)	Turn Rate (°/100ft)	Toolface Azimuth (°)
5,100.00	6.63	289.35	5,074.69	146.82	-417.98	-141.78	0.00	0.00	0.00	0.00
5,200.00	6.63	289.35	5,174.02	150.65	-428.88	-145.48	0.00	0.00	0.00	0.00
5,300.00	6.63	289.35	5,273.35	154.48	-439.78	-149.17	0.00	0.00	0.00	0.00
5,400.00	6.63	289.35	5,372.68	158.31	-450.68	-152.87	0.00	0.00	0.00	0.00
5,500.00	6.63	289.35	5,472.01	162.14	-461.58	-156.57	0.00	0.00	0.00	0.00
5,600.00	6.63	289.35	5,571.34	165.97	-472.48	-160.27	0.00	0.00	0.00	0.00
5,700.00	6.63	289.35	5,670.67	169.80	-483.38	-163.97	0.00	0.00	0.00	0.00
5,800.00	6.63	289.35	5,770.00	173.63	-494.29	-167.66	0.00	0.00	0.00	0.00
5,900.00	6.63	289.35	5,869.33	177.46	-505.19	-171.36	0.00	0.00	0.00	0.00
6,000.00	6.63	289.35	5,968.66	181.29	-516.09	-175.06	0.00	0.00	0.00	0.00
6,100.00	6.63	289.35	6,068.00	185.12	-526.99	-178.76	0.00	0.00	0.00	0.00
6,200.00	6.63	289.35	6,167.33	188.94	-537.89	-182.45	0.00	0.00	0.00	0.00
6,300.00	6.63	289.35	6,266.66	192.77	-548.79	-186.15	0.00	0.00	0.00	0.00
6,400.00	6.63	289.35	6,365.99	196.60	-559.69	-189.85	0.00	0.00	0.00	0.00
6,500.00	6.63	289.35	6,465.32	200.43	-570.59	-193.55	0.00	0.00	0.00	0.00
6,600.00	6.63	289.35	6,564.65	204.26	-581.49	-197.24	0.00	0.00	0.00	0.00
6,658.20	6.63	289.35	6,622.46	206.49	-587.84	-199.40	0.00	0.00	0.00	0.00
KOP @ 6658.20ft										
6,700.00	6.62	252.50	6,664.00	206.57	-592.42	-199.42	10.00	-0.04	-88.16	-108.53
6,800.00	13.58	207.85	6,762.51	194.42	-603.42	-187.14	10.00	6.96	-44.66	-71.91
6,900.00	22.90	195.83	6,857.42	165.25	-614.24	-157.84	10.00	9.32	-12.02	-27.81
7,000.00	32.61	190.63	6,945.82	119.93	-624.55	-112.40	10.00	9.71	-5.20	-16.35
DLS = 10.00/100ft										
7,066.92	39.18	188.48	7,000.00	81.26	-631.00	-73.65	10.00	9.82	-3.21	-11.73
Sharon Springs										
7,100.00	42.44	187.63	7,025.04	59.85	-634.02	-52.21	10.00	9.86	-2.57	-9.99
7,159.79	48.35	186.33	7,067.00	17.61	-639.16	-9.92	10.00	9.88	-2.17	-9.34
Niobrara A										
7,200.00	52.33	185.59	7,092.66	-13.17	-642.37	20.91	10.00	9.90	-1.85	-8.43
7,208.83	53.21	185.43	7,098.00	-20.17	-643.05	27.91	10.00	9.90	-1.73	-7.96
Niobrara B										
7,300.00	62.25	184.03	7,146.63	-96.91	-649.35	104.72	10.00	9.92	-1.54	-7.86
7,400.00	72.17	182.74	7,185.32	-188.83	-654.75	196.70	10.00	9.93	-1.29	-7.11
7,456.70	77.81	182.07	7,200.00	-243.52	-657.04	251.42	10.00	9.94	-1.18	-6.61
Niobrara C										
7,500.00	82.11	181.58	7,207.55	-286.13	-658.40	294.04	10.00	9.94	-1.13	-6.44
7,581.14	90.18	180.69	7,213.00	-367.00	-660.00	374.92	10.00	9.94	-1.10	-6.35
End Build @ 7581.14ft - Niobrara C TL - Heel - 7" Intermediate Casing - Crowder 36N-18HZ_CP										
7,600.00	90.18	180.69	7,212.94	-385.86	-660.23	393.78	0.00	0.00	0.00	-6.29
7,700.00	90.18	180.69	7,212.64	-485.85	-661.43	493.78	0.00	0.00	0.00	0.00
7,800.00	90.18	180.69	7,212.33	-585.85	-662.62	593.78	0.00	0.00	0.00	0.00
7,900.00	90.18	180.69	7,212.02	-685.84	-663.82	693.78	0.00	0.00	0.00	0.00
8,000.00	90.18	180.69	7,211.71	-785.83	-665.02	793.78	0.00	0.00	0.00	0.00
8,100.00	90.18	180.69	7,211.41	-885.82	-666.22	893.78	0.00	0.00	0.00	0.00
8,200.00	90.18	180.69	7,211.10	-985.81	-667.42	993.78	0.00	0.00	0.00	0.00
8,300.00	90.18	180.69	7,210.79	-1,085.81	-668.62	1,093.78	0.00	0.00	0.00	0.00
8,400.00	90.18	180.69	7,210.49	-1,185.80	-669.82	1,193.78	0.00	0.00	0.00	0.00
8,500.00	90.18	180.69	7,210.18	-1,285.79	-671.02	1,293.78	0.00	0.00	0.00	0.00
8,600.00	90.18	180.69	7,209.87	-1,385.78	-672.22	1,393.78	0.00	0.00	0.00	0.00
8,700.00	90.18	180.69	7,209.57	-1,485.78	-673.42	1,493.78	0.00	0.00	0.00	0.00
8,800.00	90.18	180.69	7,209.26	-1,585.77	-674.62	1,593.78	0.00	0.00	0.00	0.00
8,900.00	90.18	180.69	7,208.95	-1,685.76	-675.82	1,693.78	0.00	0.00	0.00	0.00
9,000.00	90.18	180.69	7,208.65	-1,785.75	-677.02	1,793.78	0.00	0.00	0.00	0.00
9,100.00	90.18	180.69	7,208.34	-1,885.75	-678.22	1,893.78	0.00	0.00	0.00	0.00
9,200.00	90.18	180.69	7,208.03	-1,985.74	-679.42	1,993.78	0.00	0.00	0.00	0.00
9,300.00	90.18	180.69	7,207.72	-2,085.73	-680.61	2,093.78	0.00	0.00	0.00	0.00
9,400.00	90.18	180.69	7,207.42	-2,185.72	-681.81	2,193.77	0.00	0.00	0.00	0.00
9,500.00	90.18	180.69	7,207.11	-2,285.71	-683.01	2,293.77	0.00	0.00	0.00	0.00

Plan Report for Crowder 36N-18HZ - Plan B Rev 0 Permit

Measured Depth (ft)	Inclination (°)	Azimuth (°)	Vertical Depth (ft)	+N/-S (ft)	+E/-W (ft)	Vertical Section (ft)	Dogleg Rate (°/100ft)	Build Rate (°/100ft)	Turn Rate (°/100ft)	Toolface Azimuth (°)
9,600.00	90.18	180.69	7,206.80	-2,385.71	-684.21	2,393.77	0.00	0.00	0.00	0.00
9,700.00	90.18	180.69	7,206.50	-2,485.70	-685.41	2,493.77	0.00	0.00	0.00	0.00
9,800.00	90.18	180.69	7,206.19	-2,585.69	-686.61	2,593.77	0.00	0.00	0.00	0.00
9,900.00	90.18	180.69	7,205.88	-2,685.68	-687.81	2,693.77	0.00	0.00	0.00	0.00
10,000.00	90.18	180.69	7,205.58	-2,785.68	-689.01	2,793.77	0.00	0.00	0.00	0.00
10,100.00	90.18	180.69	7,205.27	-2,885.67	-690.21	2,893.77	0.00	0.00	0.00	0.00
10,200.00	90.18	180.69	7,204.96	-2,985.66	-691.41	2,993.77	0.00	0.00	0.00	0.00
10,300.00	90.18	180.69	7,204.65	-3,085.65	-692.61	3,093.77	0.00	0.00	0.00	0.00
10,400.00	90.18	180.69	7,204.35	-3,185.65	-693.81	3,193.77	0.00	0.00	0.00	0.00
10,500.00	90.18	180.69	7,204.04	-3,285.64	-695.01	3,293.77	0.00	0.00	0.00	0.00
10,600.00	90.18	180.69	7,203.73	-3,385.63	-696.21	3,393.77	0.00	0.00	0.00	0.00
10,700.00	90.18	180.69	7,203.43	-3,485.62	-697.40	3,493.77	0.00	0.00	0.00	0.00
10,800.00	90.18	180.69	7,203.12	-3,585.62	-698.60	3,593.77	0.00	0.00	0.00	0.00
10,900.00	90.18	180.69	7,202.81	-3,685.61	-699.80	3,693.77	0.00	0.00	0.00	0.00
11,000.00	90.18	180.69	7,202.51	-3,785.60	-701.00	3,793.77	0.00	0.00	0.00	0.00
11,100.00	90.18	180.69	7,202.20	-3,885.59	-702.20	3,893.77	0.00	0.00	0.00	0.00
11,200.00	90.18	180.69	7,201.89	-3,985.58	-703.40	3,993.77	0.00	0.00	0.00	0.00
11,300.00	90.18	180.69	7,201.59	-4,085.58	-704.60	4,093.77	0.00	0.00	0.00	0.00
11,400.00	90.18	180.69	7,201.28	-4,185.57	-705.80	4,193.77	0.00	0.00	0.00	0.00
11,500.00	90.18	180.69	7,200.97	-4,285.56	-707.00	4,293.76	0.00	0.00	0.00	0.00
11,600.00	90.18	180.69	7,200.66	-4,385.55	-708.20	4,393.76	0.00	0.00	0.00	0.00
11,700.00	90.18	180.69	7,200.36	-4,485.55	-709.40	4,493.76	0.00	0.00	0.00	0.00
11,800.00	90.18	180.69	7,200.05	-4,585.54	-710.60	4,593.76	0.00	0.00	0.00	0.00
11,816.58	90.18	180.69	7,200.00	-4,602.12	-710.80	4,610.34	0.00	0.00	0.00	0.00
Niobrara C TL - Toe										
11,816.59	90.18	180.69	7,200.00	-4,602.12	-710.80	4,610.35	0.00	0.00	0.00	0.00
Crowder 36N-18HZ_BHL										

Plan Annotations

Measured Depth (ft)	Vertical Depth (ft)	Local Coordinates		Comment
		+N/-S (ft)	+E/-W (ft)	
1,100.00	1,100.00	0.00	0.00	Begin Nudge @ 1100.00ft
1,431.74	1,431.00	6.36	-18.10	End Nudge @ 1431.74ft
6,658.20	6,622.46	206.49	-587.84	KOP @ 6658.20ft
7,000.00	6,945.82	119.93	-624.55	DLS = 10.00/100ft
7,581.14	7,213.00	-367.00	-660.00	End Build @ 7581.14ft
11,816.59	7,200.00	-4,602.13	-710.80	TD @ 11816.59ft

Vertical Section Information

Angle Type	Target	Azimuth (°)	Origin Type	Origin		Start TVD (ft)
				+N/_S (ft)	+E/-W (ft)	
User	No Target (Freehand)	180.69	Slot	0.00	0.00	0.00

Survey tool program

From (ft)	To (ft)	Survey/Plan	Survey Tool
0.00	11,816.59	Plan B Rev 0 Permit	MWD

Plan Report for Crowder 36N-18HZ - Plan B Rev 0 Permit

Casing Details

Measured Depth (ft)	Vertical Depth (ft)	Name	Casing Diameter (")	Hole Diameter (")
7,581.14	7,213.00	7" Intermediate Casing	7	8-3/4

Formation Details

Measured Depth (ft)	Vertical Depth (ft)	Name	Lithology	Dip (°)	Dip Direction (°)
4,019.07	4,001.00	Parkman		0.00	
4,615.06	4,593.00	Sussex		0.00	
7,066.92	7,000.00	Sharon Springs		0.00	
7,159.79	7,067.00	Niobrara A		0.00	
7,208.83	7,098.00	Niobrara B		0.00	
7,456.70	7,200.00	Niobrara C		0.00	
7,581.14	7,213.00	Niobrara C TL - Heel		0.00	
11,816.58	7,200.00	Niobrara C TL - Toe		0.00	

Targets associated with this wellbore

Target Name	TVD (ft)	+N/-S (ft)	+E/-W (ft)	Shape
Crowder 36N-18HZ_SHL	0.00	0.00	0.00	Point
Crowder 36N-18HZ_BHL	7,200.00	-4,602.12	-710.80	Point
Crowder 36N-18HZ_WP1	7,204.75	-3,056.78	-672.92	Point
Potts #X18-15 - As Drilled	0.00	-4,554.03	-881.92	Circle
Crowder 36N-18HZ_CP	7,213.00	-367.00	-660.00	Point
Potts #X18-10	0.00	-3,056.78	-842.72	Circle

North Reference Sheet for Sec. 18-T2N-R65W - Crowder 36N-18HZ - Plan B Rev 0

All data is in US Feet unless otherwise stated. Directions and Coordinates are relative to True North Reference.

Vertical Depths are relative to RKB=17 @ 4975.00ft (Drilling Rig). Northing and Easting are relative to Crowder 36N-18HZ

Coordinate System is US State Plane 1983, Colorado Northern Zone using datum North American Datum 1983, ellipsoid GRS 1980

Projection method is Lambert Conformal Conic (2 parallel)

Central Meridian is -105.50°, Longitude Origin:0.000000°, Latitude Origin:40.783333°

False Easting: 3,000,000.00ft, False Northing: 1,000,000.00ft, Scale Reduction: 0.99995853

Grid Coordinates of Well: 1,296,734.42 ft N, 3,223,235.73 ft E

Geographical Coordinates of Well: 40° 08' 42.62" N, 104° 42' 05.24" W

Grid Convergence at Surface is: 0.52°

Based upon Minimum Curvature type calculations, at a Measured Depth of 11,816.59ft
the Bottom Hole Displacement is 4,656.69ft in the Direction of 188.78° (True).

Magnetic Convergence at surface is: -8.13° (4 January 2013, , BGGM2012)

