

Northern Region Drilling

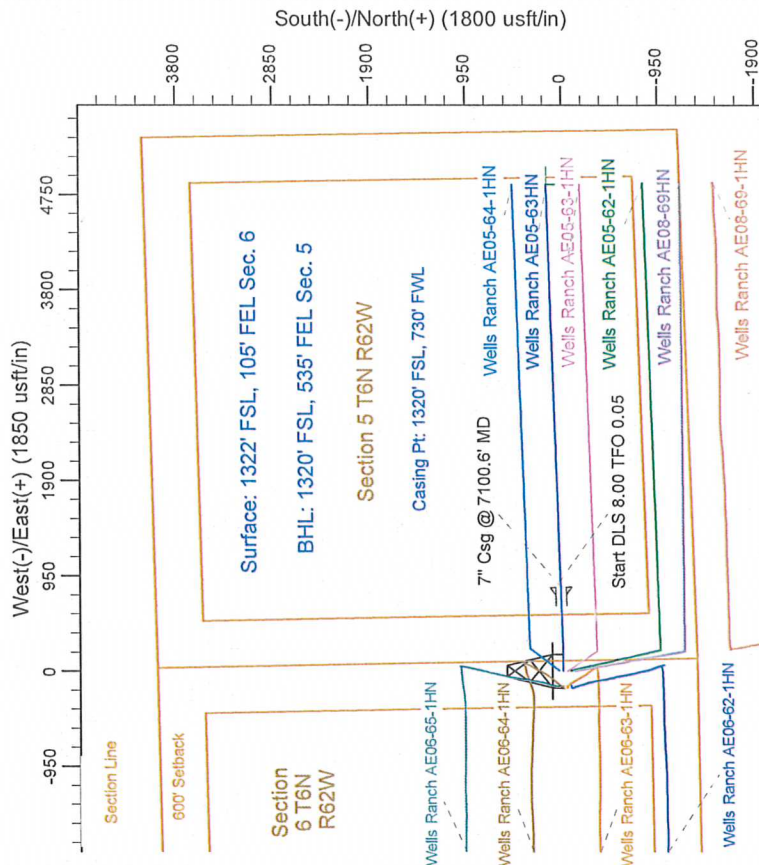
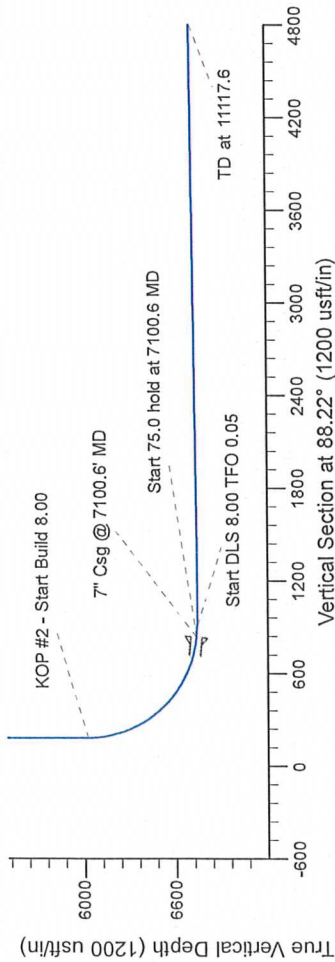
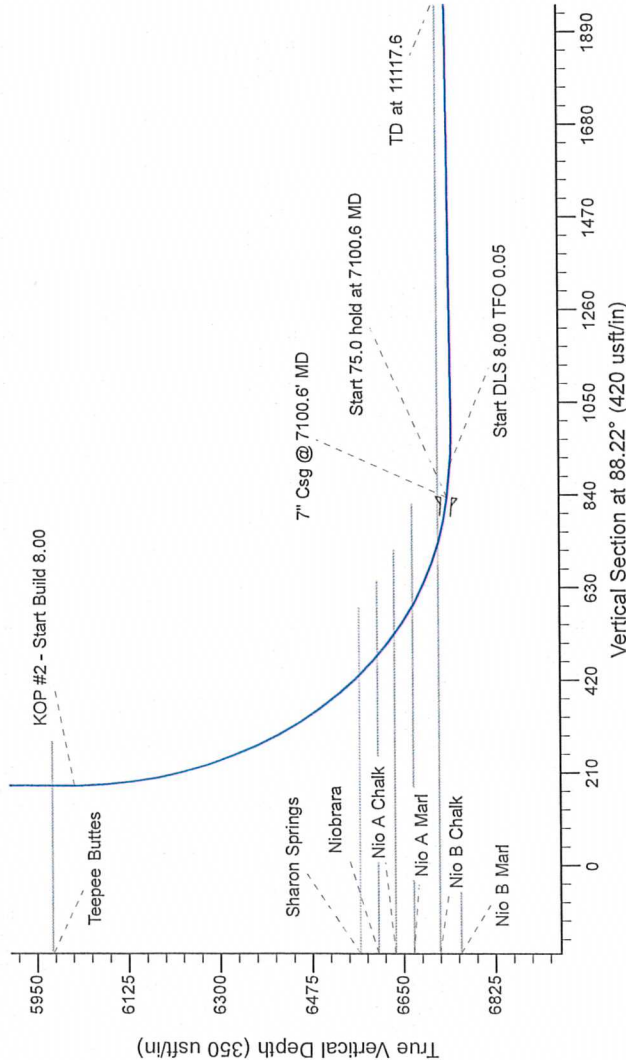
Project: Wattenberg Field
 Site: AE (Sec 6-T6N-R62W) Weld County, CO
 Well: Wells Ranch AE05-63HN
 Wellbore: Original Drilling
 Design: APD - Rev 0

Geodetic System: US State Plane 1983
 Datum: North American Datum 1983
 Ellipsoid: GRS 1980
 Zone: Colorado Northern Zone
 System Datum: Mean Sea Level

SECTION DETAILS

Sec	MD	Inc	Azi	TVD	+N/S	+E/W	Dleg	TFace	VSet	Target
1	0.0	0.00	0.00	0.0	0.0	0.0	0.00	0.00	0.0	
2	2500.0	0.00	0.00	2500.0	0.0	0.0	0.00	0.00	0.0	
3	5382.7	12.02	90.00	5377.2	0.0	50.2	2.50	90.00	50.2	
4	5823.4	0.00	90.00	5823.4	0.0	129.8	0.00	90.00	129.8	
5	6038.4	0.00	0.00	6038.4	0.0	180.0	2.50	180.00	179.9	
6	7100.6	85.00	88.15	6735.2	21.1	180.0	0.00	88.15	833.7	
7	7100.6	85.00	88.15	6735.2	23.5	908.1	0.00	0.00	908.4	
8	7244.3	90.50	88.15	6745.4	25.7	976.7	8.00	0.05	977.1	
9	7244.3	90.50	88.15	6745.4	25.7	976.7	8.00	0.05	977.1	
10	11117.6	90.50	88.15	6711.6	150.5	4847.8	0.00	0.00	4850.1	

Wells Ranch AE05-63HN BHL 1320'FSL 535'FEL



T G M

Azimuths to Grid North
 True North: -0.74°
 Magnetic North: 7.67°

Magnetic Field
 Strength: 53101.8snT
 Dip Angle: 67.17°
 Date: 11/29/2012
 Model: IGRF200510

WELL DETAILS: Wells Ranch AE05-63HN			
Northing	Easting	Ground Level	Longitude
1431430.97	3317985.87	4945.0	-104.356340
Plan: APD - Rev 0 (Wells Ranch AE05-63HN Original Drilling)			
Created By: Carrie Willers		Date: 14:10, December 04 2012	
Checked:		Date:	
Reviewed:		Date:	
Approved:		Date:	