

**WELLBORE DIAGRAM**  
**ACTUAL P&A WBD**

2440' FSL & 665' FEL  
 40.126932/-108.276257

Operator: Koch Exploration Company  
 Well Name: WRD Fed 21-9  
 Lease Number: COC-100022  
 Location: NESE Sec 21 T2N R97W  
 Field: White River Dome  
 County, State: Rio Blanco, CO  
 API Number: 05-103-09714  
 Diagram Date: 1/17/2013

KB 5762'

GL 5750'

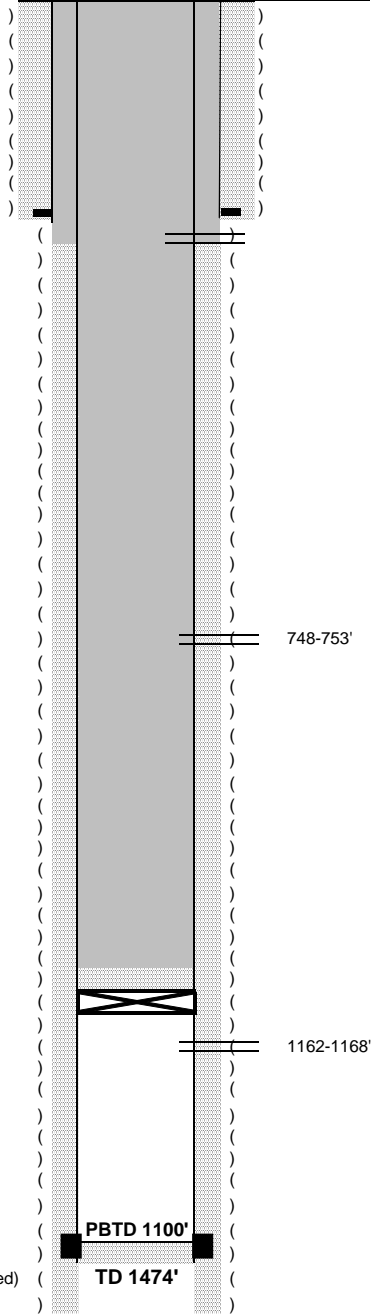
9 5/8" 36# csg @ 52'  
 3.5 yards Redi-mix

7" 23# K55 STC csg set @ 444'  
 150 sks Class G

TOC @ Surface  
 (CBL from 9/14/1994)

CIBP set @ 1121' w/ 21' cmt on top

4-1/2" 10.5# K55 STC (used, inspected)  
 csg landed @ 1474'  
 175 sks Class G



**Actual Procedure**

**Well Plugged 8/1/2012**

- 1 MIRU
- 2 EOT @ 1109', pump 1st plug: 36sks (15.6#, 1.16yield, 41.8cuft)
- 3 WOC. RIH tag TOC @ 624'
- 5 Shoot 4 squeeze holes at 494'
- 6 EOT @ 623', pump 2nd plug: 40sks (15.6#, 1.16yield, 46.4cuft)
- 7 WOC. TIH/tag @ 291', TOOH.
- 8 EOT @ 281', pump 3rd plug: 28sks (15.6#, 1.16yield, 32.5cuft)
- 9 Cut off wellhead 4' below surface
- 10 1" the 4 1/2" x 7" annulus and fill 41/2" csg with 16sks (15.6#, 1.16 yield, 18.6cuft) No drop in cmt.
- 11 Weld on top cap. Clean location.