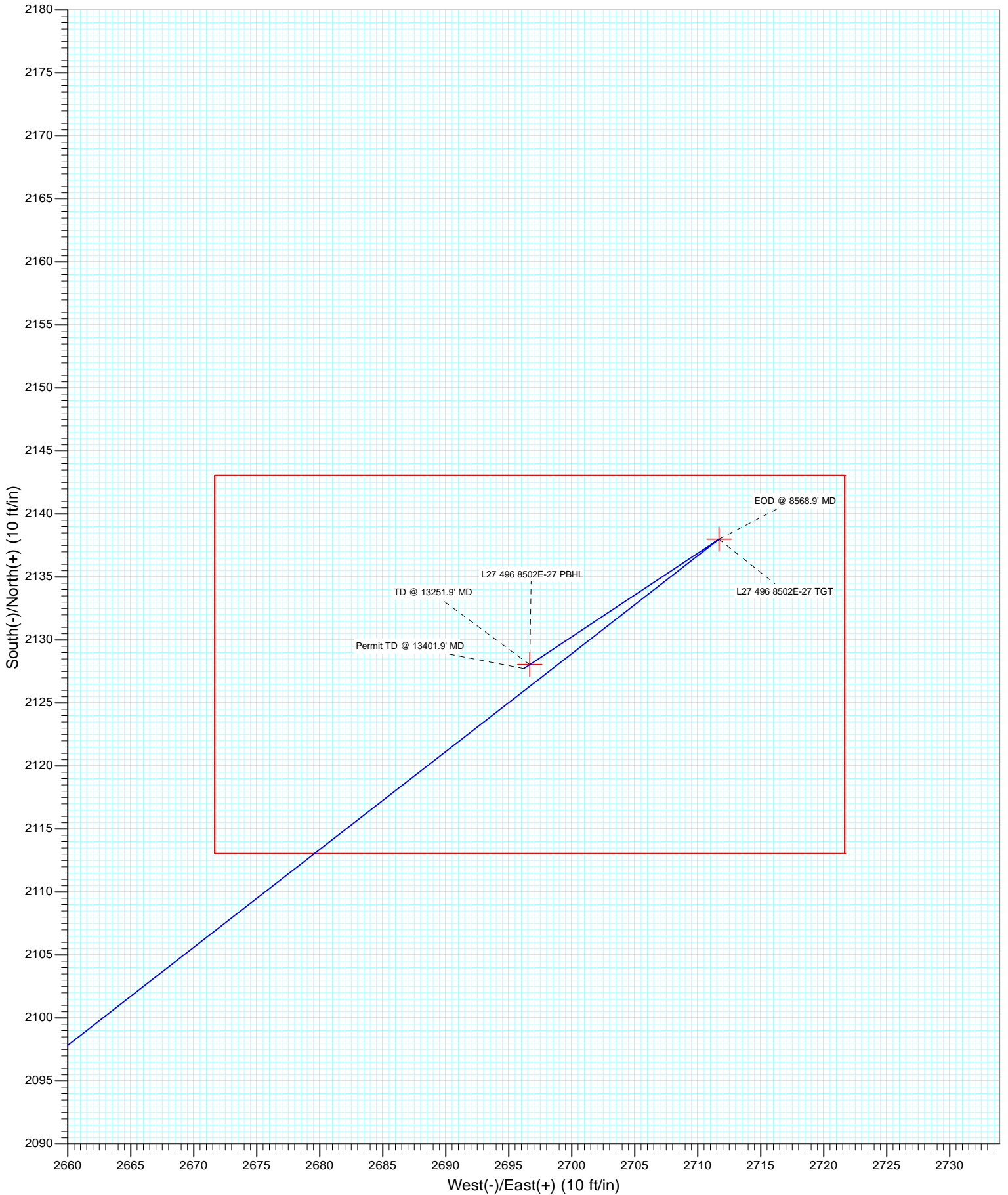




Project: Story Gulch
Site: S27-T4S-R96W (L27 496)
Well: 8502E-27 L27 496
Wellbore: DD
Design: Plan #1



Cathedral Energy Services

Planning Report

Database: USA EDM 5000 Multi Users DB	Local Co-ordinate Reference: Well 8502E-27 L27 496
Company: EnCana Oil & Gas (USA) Inc	TVD Reference: Well @ 8136.0ft (Rig)
Project: Story Gulch	MD Reference: Well @ 8136.0ft (Rig)
Site: S27-T4S-R96W (L27 496)	North Reference: True
Well: 8502E-27 L27 496	Survey Calculation Method: Minimum Curvature
Wellbore: DD	
Design: Plan #1	

Project Story Gulch		
Map System: US State Plane 1983	System Datum: Mean Sea Level	
Geo Datum: North American Datum 1983		
Map Zone: Colorado Central Zone		

Site S27-T4S-R96W (L27 496)					
Site Position:		Northing: 1,680,404.44 ft	Latitude: 39° 40' 17.06 N		
From: Lat/Long		Easting: 2,251,282.88 ft	Longitude: 108° 9' 36.59 W		
Position Uncertainty: 0.0 ft		Slot Radius: 13.200 in	Grid Convergence: -1.68 °		

Well 8502E-27 L27 496					
Well Position	+N/-S 0.0 ft	Northing: 1,680,436.30 ft	Latitude: 39° 40' 17.38 N		
	+E/-W 0.0 ft	Easting: 2,251,300.24 ft	Longitude: 108° 9' 36.38 W		
Position Uncertainty	0.0 ft	Wellhead Elevation: ft	Ground Level: 8,104.0 ft		

Wellbore DD					
Magnetics	Model Name	Sample Date	Declination (°)	Dip Angle (°)	Field Strength (nT)
	IGRF2010	9/24/2012	10.28	65.82	52,178

Design Plan #1				
Audit Notes:				
Version:	Phase: PLAN	Tie On Depth: 0.0		
Vertical Section:	Depth From (TVD) (ft)	+N/-S (ft)	+E/-W (ft)	Direction (°)
	0.0	0.0	0.0	51.72

Plan Sections										
Measured Depth (ft)	Inclination (°)	Azimuth (°)	Vertical Depth (ft)	+N/-S (ft)	+E/-W (ft)	Dogleg Rate (°/100ft)	Build Rate (°/100ft)	Turn Rate (°/100ft)	TFO (°)	Target
0.0	0.00	0.00	0.0	0.0	0.0	0.00	0.00	0.00	0.00	
200.0	0.00	0.00	200.0	0.0	0.0	0.00	0.00	0.00	0.00	
366.7	5.00	17.00	366.5	7.0	2.1	3.00	3.00	0.00	17.00	
1,158.3	27.68	52.15	1,122.1	154.9	159.6	3.00	2.86	4.44	41.60	
7,646.4	27.68	52.15	6,867.9	2,003.9	2,539.2	0.00	0.00	0.00	0.00	
8,568.9	0.00	0.00	7,755.0	2,138.0	2,711.7	3.00	-3.00	0.00	180.00	L27 496 8502E-27 TC
8,657.9	0.22	236.48	7,844.0	2,137.9	2,711.6	0.25	0.25	-138.73	236.48	
13,251.9	0.22	236.48	12,438.0	2,128.1	2,696.7	0.00	0.00	0.00	0.00	L27 496 8502E-27 PE
13,401.9	0.22	236.48	12,588.0	2,127.7	2,696.2	0.00	0.00	0.00	0.00	

Cathedral Energy Services

Planning Report

Database:	USA EDM 5000 Multi Users DB	Local Co-ordinate Reference:	Well 8502E-27 L27 496
Company:	EnCana Oil & Gas (USA) Inc	TVD Reference:	Well @ 8136.0ft (Rig)
Project:	Story Gulch	MD Reference:	Well @ 8136.0ft (Rig)
Site:	S27-T4S-R96W (L27 496)	North Reference:	True
Well:	8502E-27 L27 496	Survey Calculation Method:	Minimum Curvature
Wellbore:	DD		
Design:	Plan #1		

Planned Survey									
Measured Depth (ft)	Inclination (°)	Azimuth (°)	Vertical Depth (ft)	+N/-S (ft)	+E/-W (ft)	Vertical Section (ft)	Dogleg Rate (°/100ft)	Build Rate (°/100ft)	Comments / Formations
0.0	0.00	0.00	0.0	0.0	0.0	0.0	0.00	0.00	
100.0	0.00	0.00	100.0	0.0	0.0	0.0	0.00	0.00	
200.0	0.00	0.00	200.0	0.0	0.0	0.0	0.00	0.00	KOP @ 200' MD
300.0	3.00	17.00	300.0	2.5	0.8	2.2	3.00	3.00	
366.7	5.00	17.00	366.5	7.0	2.1	6.0	3.00	3.00	End Nudg; Inc=5°, Azm=17°
400.0	5.79	23.60	399.6	9.9	3.2	8.6	3.00	2.36	
500.0	8.42	35.44	498.9	20.5	9.5	20.1	3.00	2.63	
600.0	11.24	41.53	597.4	33.7	20.2	36.7	3.00	2.82	
700.0	14.13	45.18	694.9	49.6	35.3	58.5	3.00	2.89	
800.0	17.06	47.61	791.3	68.1	54.8	85.2	3.00	2.93	
900.0	20.01	49.34	886.1	89.2	78.6	117.0	3.00	2.95	
1,000.0	22.97	50.64	979.1	112.7	106.7	153.6	3.00	2.96	
1,100.0	25.94	51.65	1,070.1	138.6	138.9	195.0	3.00	2.97	
1,158.3	27.68	52.15	1,122.1	154.9	159.6	221.3	3.00	2.98	EOB; Inc=27.68°
1,200.0	27.68	52.15	1,159.1	166.8	174.9	240.6	0.00	0.00	
1,204.4	27.68	52.15	1,163.0	168.0	176.6	242.7	0.00	0.00	A_GROOVE_TVD
1,300.0	27.68	52.15	1,247.6	195.3	211.6	287.1	0.00	0.00	
1,380.6	27.68	52.15	1,319.0	218.2	241.2	324.5	0.00	0.00	B_GROOVE_TVD
1,394.1	27.68	52.15	1,331.0	222.1	246.1	330.8	0.00	0.00	B_GROOVE_BASE_TVD
1,400.0	27.68	52.15	1,336.2	223.8	248.3	333.5	0.00	0.00	
1,500.0	27.68	52.15	1,424.8	252.3	285.0	380.0	0.00	0.00	
1,600.0	27.68	52.15	1,513.3	280.8	321.6	426.4	0.00	0.00	
1,700.0	27.68	52.15	1,601.9	309.3	358.3	472.9	0.00	0.00	
1,800.0	27.68	52.15	1,690.4	337.8	395.0	519.3	0.00	0.00	
1,900.0	27.68	52.15	1,779.0	366.2	431.7	565.7	0.00	0.00	
2,000.0	27.68	52.15	1,867.5	394.7	468.3	612.2	0.00	0.00	
2,100.0	27.68	52.15	1,956.1	423.2	505.0	658.6	0.00	0.00	
2,200.0	27.68	52.15	2,044.7	451.7	541.7	705.1	0.00	0.00	
2,300.0	27.68	52.15	2,133.2	480.2	578.4	751.5	0.00	0.00	
2,400.0	27.68	52.15	2,221.8	508.7	615.0	798.0	0.00	0.00	
2,465.7	27.68	52.15	2,280.0	527.5	639.1	828.5	0.00	0.00	GARDEN_GULCH_TVD.
2,500.0	27.68	52.15	2,310.3	537.2	651.7	844.4	0.00	0.00	
2,600.0	27.68	52.15	2,398.9	565.7	688.4	890.9	0.00	0.00	
2,700.0	27.68	52.15	2,487.5	594.2	725.1	937.3	0.00	0.00	
2,800.0	27.68	52.15	2,576.0	622.7	761.7	983.8	0.00	0.00	
2,900.0	27.68	52.15	2,664.6	651.2	798.4	1,030.2	0.00	0.00	
3,000.0	27.68	52.15	2,753.1	679.7	835.1	1,076.6	0.00	0.00	
3,100.0	27.68	52.15	2,841.7	708.2	871.8	1,123.1	0.00	0.00	
3,200.0	27.68	52.15	2,930.3	736.7	908.4	1,169.5	0.00	0.00	
3,300.0	27.68	52.15	3,018.8	765.2	945.1	1,216.0	0.00	0.00	
3,400.0	27.68	52.15	3,107.4	793.7	981.8	1,262.4	0.00	0.00	
3,500.0	27.68	52.15	3,195.9	822.2	1,018.5	1,308.9	0.00	0.00	
3,578.0	27.68	52.15	3,265.0	844.5	1,047.1	1,345.1	0.00	0.00	WASATCH_FM_TVD
3,600.0	27.68	52.15	3,284.5	850.7	1,055.1	1,355.3	0.00	0.00	
3,700.0	27.68	52.15	3,373.1	879.2	1,091.8	1,401.8	0.00	0.00	
3,800.0	27.68	52.15	3,461.6	907.7	1,128.5	1,448.2	0.00	0.00	
3,900.0	27.68	52.15	3,550.2	936.2	1,165.2	1,494.7	0.00	0.00	
4,000.0	27.68	52.15	3,638.7	964.7	1,201.8	1,541.1	0.00	0.00	
4,100.0	27.68	52.15	3,727.3	993.2	1,238.5	1,587.5	0.00	0.00	
4,200.0	27.68	52.15	3,815.8	1,021.7	1,275.2	1,634.0	0.00	0.00	
4,300.0	27.68	52.15	3,904.4	1,050.2	1,311.9	1,680.4	0.00	0.00	
4,400.0	27.68	52.15	3,993.0	1,078.7	1,348.5	1,726.9	0.00	0.00	

Cathedral Energy Services

Planning Report

Database:	USA EDM 5000 Multi Users DB	Local Co-ordinate Reference:	Well 8502E-27 L27 496
Company:	EnCana Oil & Gas (USA) Inc	TVD Reference:	Well @ 8136.0ft (Rig)
Project:	Story Gulch	MD Reference:	Well @ 8136.0ft (Rig)
Site:	S27-T4S-R96W (L27 496)	North Reference:	True
Well:	8502E-27 L27 496	Survey Calculation Method:	Minimum Curvature
Wellbore:	DD		
Design:	Plan #1		

Planned Survey									
Measured Depth (ft)	Inclination (°)	Azimuth (°)	Vertical Depth (ft)	+N/-S (ft)	+E/-W (ft)	Vertical Section (ft)	Dogleg Rate (°/100ft)	Build Rate (°/100ft)	Comments / Formations
4,500.0	27.68	52.15	4,081.5	1,107.2	1,385.2	1,773.3	0.00	0.00	
4,600.0	27.68	52.15	4,170.1	1,135.7	1,421.9	1,819.8	0.00	0.00	
4,700.0	27.68	52.15	4,258.6	1,164.2	1,458.6	1,866.2	0.00	0.00	
4,800.0	27.68	52.15	4,347.2	1,192.7	1,495.2	1,912.7	0.00	0.00	
4,900.0	27.68	52.15	4,435.8	1,221.2	1,531.9	1,959.1	0.00	0.00	
5,000.0	27.68	52.15	4,524.3	1,249.7	1,568.6	2,005.5	0.00	0.00	
5,100.0	27.68	52.15	4,612.9	1,278.2	1,605.3	2,052.0	0.00	0.00	
5,200.0	27.68	52.15	4,701.4	1,306.7	1,641.9	2,098.4	0.00	0.00	
5,300.0	27.68	52.15	4,790.0	1,335.2	1,678.6	2,144.9	0.00	0.00	
5,400.0	27.68	52.15	4,878.6	1,363.7	1,715.3	2,191.3	0.00	0.00	
5,500.0	27.68	52.15	4,967.1	1,392.2	1,752.0	2,237.8	0.00	0.00	
5,600.0	27.68	52.15	5,055.7	1,420.7	1,788.6	2,284.2	0.00	0.00	
5,700.0	27.68	52.15	5,144.2	1,449.2	1,825.3	2,330.7	0.00	0.00	
5,800.0	27.68	52.15	5,232.8	1,477.7	1,862.0	2,377.1	0.00	0.00	
5,900.0	27.68	52.15	5,321.4	1,506.2	1,898.7	2,423.6	0.00	0.00	
6,000.0	27.68	52.15	5,409.9	1,534.7	1,935.3	2,470.0	0.00	0.00	
6,095.0	27.68	52.15	5,494.0	1,561.8	1,970.2	2,514.1	0.00	0.00	WASATCH_G_TVD
6,100.0	27.68	52.15	5,498.5	1,563.2	1,972.0	2,516.4	0.00	0.00	
6,200.0	27.68	52.15	5,587.0	1,591.7	2,008.7	2,562.9	0.00	0.00	
6,300.0	27.68	52.15	5,675.6	1,620.2	2,045.4	2,609.3	0.00	0.00	
6,400.0	27.68	52.15	5,764.1	1,648.7	2,082.0	2,655.8	0.00	0.00	
6,500.0	27.68	52.15	5,852.7	1,677.2	2,118.7	2,702.2	0.00	0.00	
6,600.0	27.68	52.15	5,941.3	1,705.7	2,155.4	2,748.7	0.00	0.00	
6,700.0	27.68	52.15	6,029.8	1,734.2	2,192.1	2,795.1	0.00	0.00	
6,800.0	27.68	52.15	6,118.4	1,762.7	2,228.7	2,841.6	0.00	0.00	
6,900.0	27.68	52.15	6,206.9	1,791.2	2,265.4	2,888.0	0.00	0.00	
7,000.0	27.68	52.15	6,295.5	1,819.7	2,302.1	2,934.5	0.00	0.00	
7,100.0	27.68	52.15	6,384.1	1,848.2	2,338.8	2,980.9	0.00	0.00	
7,200.0	27.68	52.15	6,472.6	1,876.7	2,375.5	3,027.3	0.00	0.00	
7,300.0	27.68	52.15	6,561.2	1,905.2	2,412.1	3,073.8	0.00	0.00	
7,400.0	27.68	52.15	6,649.7	1,933.7	2,448.8	3,120.2	0.00	0.00	
7,500.0	27.68	52.15	6,738.3	1,962.2	2,485.5	3,166.7	0.00	0.00	
7,600.0	27.68	52.15	6,826.9	1,990.7	2,522.2	3,213.1	0.00	0.00	
7,646.4	27.68	52.15	6,867.9	2,003.9	2,539.2	3,234.7	0.00	0.00	Start 3° Drop @ 7646.4' MD
7,700.0	26.07	52.15	6,915.8	2,018.8	2,558.3	3,258.9	3.00	-3.00	
7,800.0	23.07	52.15	7,006.7	2,044.3	2,591.1	3,300.5	3.00	-3.00	
7,900.0	20.07	52.15	7,099.7	2,066.9	2,620.1	3,337.2	3.00	-3.00	
8,000.0	17.07	52.15	7,194.5	2,086.4	2,645.3	3,369.1	3.00	-3.00	
8,100.0	14.07	52.15	7,290.8	2,102.9	2,666.5	3,395.9	3.00	-3.00	
8,200.0	11.07	52.15	7,388.4	2,116.2	2,683.7	3,417.7	3.00	-3.00	
8,300.0	8.07	52.15	7,487.0	2,126.4	2,696.8	3,434.3	3.00	-3.00	
8,400.0	5.07	52.15	7,586.3	2,133.4	2,705.8	3,445.7	3.00	-3.00	
8,500.0	2.07	52.15	7,686.1	2,137.2	2,710.7	3,451.9	3.00	-3.00	
8,528.9	1.20	52.15	7,715.0	2,137.7	2,711.4	3,452.8	3.00	-3.00	WILLIAMS_FORK_TVD
8,568.9	0.00	0.00	7,755.0	2,138.0	2,711.7	3,453.2	3.00	-3.00	EOD @ 8568.9' MD - TOG TVD
8,600.0	0.08	236.48	7,786.1	2,138.0	2,711.7	3,453.1	0.25	0.25	
8,657.9	0.22	236.48	7,844.0	2,137.9	2,711.6	3,453.0	0.25	0.25	
8,700.0	0.22	236.48	7,886.1	2,137.8	2,711.4	3,452.8	0.00	0.00	
8,800.0	0.22	236.48	7,986.1	2,137.6	2,711.1	3,452.4	0.00	0.00	
8,900.0	0.22	236.48	8,086.1	2,137.4	2,710.8	3,452.1	0.00	0.00	
9,000.0	0.22	236.48	8,186.1	2,137.2	2,710.4	3,451.7	0.00	0.00	
9,100.0	0.22	236.48	8,286.1	2,137.0	2,710.1	3,451.3	0.00	0.00	

Cathedral Energy Services

Planning Report

Database: USA EDM 5000 Multi Users DB
Company: EnCana Oil & Gas (USA) Inc
Project: Story Gulch
Site: S27-T4S-R96W (L27 496)
Well: 8502E-27 L27 496
Wellbore: DD
Design: Plan #1

Local Co-ordinate Reference: Well 8502E-27 L27 496
TVD Reference: Well @ 8136.0ft (Rig)
MD Reference: Well @ 8136.0ft (Rig)
North Reference: True
Survey Calculation Method: Minimum Curvature

Planned Survey

Measured Depth (ft)	Inclination (°)	Azimuth (°)	Vertical Depth (ft)	+N/-S (ft)	+E/-W (ft)	Vertical Section (ft)	Dogleg Rate (°/100ft)	Build Rate (°/100ft)	Comments / Formations
9,200.0	0.22	236.48	8,386.1	2,136.7	2,709.8	3,450.9	0.00	0.00	
9,300.0	0.22	236.48	8,486.1	2,136.5	2,709.5	3,450.5	0.00	0.00	
9,400.0	0.22	236.48	8,586.1	2,136.3	2,709.2	3,450.1	0.00	0.00	
9,500.0	0.22	236.48	8,686.1	2,136.1	2,708.8	3,449.7	0.00	0.00	
9,600.0	0.22	236.48	8,786.1	2,135.9	2,708.5	3,449.3	0.00	0.00	
9,700.0	0.22	236.48	8,886.1	2,135.7	2,708.2	3,449.0	0.00	0.00	
9,800.0	0.22	236.48	8,986.1	2,135.5	2,707.9	3,448.6	0.00	0.00	
9,900.0	0.22	236.48	9,086.1	2,135.2	2,707.5	3,448.2	0.00	0.00	
10,000.0	0.22	236.48	9,186.1	2,135.0	2,707.2	3,447.8	0.00	0.00	
10,100.0	0.22	236.48	9,286.1	2,134.8	2,706.9	3,447.4	0.00	0.00	
10,200.0	0.22	236.48	9,386.1	2,134.6	2,706.6	3,447.0	0.00	0.00	
10,300.0	0.22	236.48	9,486.1	2,134.4	2,706.2	3,446.6	0.00	0.00	
10,400.0	0.22	236.48	9,586.1	2,134.2	2,705.9	3,446.3	0.00	0.00	
10,500.0	0.22	236.48	9,686.1	2,134.0	2,705.6	3,445.9	0.00	0.00	
10,600.0	0.22	236.48	9,786.1	2,133.7	2,705.3	3,445.5	0.00	0.00	
10,700.0	0.22	236.48	9,886.1	2,133.5	2,704.9	3,445.1	0.00	0.00	
10,800.0	0.22	236.48	9,986.1	2,133.3	2,704.6	3,444.7	0.00	0.00	
10,900.0	0.22	236.48	10,086.1	2,133.1	2,704.3	3,444.3	0.00	0.00	
11,000.0	0.22	236.48	10,186.1	2,132.9	2,704.0	3,443.9	0.00	0.00	
11,100.0	0.22	236.48	10,286.1	2,132.7	2,703.6	3,443.5	0.00	0.00	
11,200.0	0.22	236.48	10,386.1	2,132.5	2,703.3	3,443.2	0.00	0.00	
11,300.0	0.22	236.48	10,486.1	2,132.2	2,703.0	3,442.8	0.00	0.00	
11,400.0	0.22	236.48	10,586.1	2,132.0	2,702.7	3,442.4	0.00	0.00	
11,500.0	0.22	236.48	10,686.1	2,131.8	2,702.4	3,442.0	0.00	0.00	
11,600.0	0.22	236.48	10,786.1	2,131.6	2,702.0	3,441.6	0.00	0.00	
11,700.0	0.22	236.48	10,886.1	2,131.4	2,701.7	3,441.2	0.00	0.00	
11,800.0	0.22	236.48	10,986.1	2,131.2	2,701.4	3,440.8	0.00	0.00	
11,900.0	0.22	236.48	11,086.1	2,131.0	2,701.1	3,440.4	0.00	0.00	
11,967.9	0.22	236.48	11,154.0	2,130.8	2,700.8	3,440.2	0.00	0.00	CAMEO_TVD
12,000.0	0.22	236.48	11,186.1	2,130.7	2,700.7	3,440.1	0.00	0.00	
12,100.0	0.22	236.48	11,286.1	2,130.5	2,700.4	3,439.7	0.00	0.00	
12,200.0	0.22	236.48	11,386.1	2,130.3	2,700.1	3,439.3	0.00	0.00	
12,300.0	0.22	236.48	11,486.1	2,130.1	2,699.8	3,438.9	0.00	0.00	
12,349.9	0.22	236.48	11,536.0	2,130.0	2,699.6	3,438.7	0.00	0.00	ROLLINS_TVD
12,400.0	0.22	236.48	11,586.1	2,129.9	2,699.4	3,438.5	0.00	0.00	
12,500.0	0.22	236.48	11,686.1	2,129.7	2,699.1	3,438.1	0.00	0.00	
12,600.0	0.22	236.48	11,786.1	2,129.5	2,698.8	3,437.7	0.00	0.00	
12,627.9	0.22	236.48	11,814.0	2,129.4	2,698.7	3,437.6	0.00	0.00	COZZETTE_TVD
12,700.0	0.22	236.48	11,886.1	2,129.2	2,698.5	3,437.3	0.00	0.00	
12,800.0	0.22	236.48	11,986.1	2,129.0	2,698.1	3,437.0	0.00	0.00	
12,814.9	0.22	236.48	12,001.0	2,129.0	2,698.1	3,436.9	0.00	0.00	CORCORAN_TVD
12,900.0	0.22	236.48	12,086.1	2,128.8	2,697.8	3,436.6	0.00	0.00	
13,000.0	0.22	236.48	12,186.1	2,128.6	2,697.5	3,436.2	0.00	0.00	
13,100.0	0.22	236.48	12,286.1	2,128.4	2,697.2	3,435.8	0.00	0.00	
13,101.9	0.22	236.48	12,288.0	2,128.4	2,697.2	3,435.8	0.00	0.00	UPPER_SEGO_TVD
13,200.0	0.22	236.48	12,386.1	2,128.2	2,696.8	3,435.4	0.00	0.00	
13,251.9	0.22	236.48	12,438.0	2,128.1	2,696.7	3,435.2	0.00	0.00	TD @ 13251.9' MD - SEGO_BASE_TARGET_1
13,300.0	0.22	236.48	12,486.1	2,127.9	2,696.5	3,435.0	0.00	0.00	
13,400.0	0.22	236.48	12,586.1	2,127.7	2,696.2	3,434.6	0.00	0.00	
13,401.9	0.22	236.48	12,588.0	2,127.7	2,696.2	3,434.6	0.00	0.00	Permit TD @ 13401.9' MD

Cathedral Energy Services

Planning Report

Database: USA EDM 5000 Multi Users DB	Local Co-ordinate Reference: Well 8502E-27 L27 496
Company: EnCana Oil & Gas (USA) Inc	TVD Reference: Well @ 8136.0ft (Rig)
Project: Story Gulch	MD Reference: Well @ 8136.0ft (Rig)
Site: S27-T4S-R96W (L27 496)	North Reference: True
Well: 8502E-27 L27 496	Survey Calculation Method: Minimum Curvature
Wellbore: DD	
Design: Plan #1	

Targets									
Target Name	Dip Angle	Dip Dir.	TVD	+N/-S	+E/-W	Northing	Easting	Latitude	Longitude
- hit/miss target	(°)	(°)	(ft)	(ft)	(ft)	(ft)	(ft)		
- Shape									
L27 496 8502E-27 PBHI - plan hits target center - Rectangle (sides W30.0 H50.0 D0.0)	0.00	0.00	12,438.0	2,128.1	2,696.7	1,682,484.49	2,254,058.06	39° 40' 38.41 N	108° 9' 1.89 W
L27 496 8502E-27 TGT - plan hits target center - Point	0.00	0.00	7,755.0	2,138.0	2,711.7	1,682,494.00	2,254,073.37	39° 40' 38.51 N	108° 9' 1.70 W

Formations					
Measured Depth	Vertical Depth	Name	Lithology	Dip	Dip Direction
(ft)	(ft)			(°)	(°)
1,204.4	1,163.0	A_GROOVE_TVD			
1,380.6	1,319.0	B_GROOVE_TVD			
1,394.1	1,331.0	B_GROOVE_BASE_TVD			
2,465.7	2,280.0	GARDEN_GULCH_TVD.			
3,578.0	3,265.0	WASATCH_FM_TVD			
6,095.0	5,494.0	WASATCH_G_TVD			
8,528.9	7,715.0	WILLIAMS_FORK_TVD			
8,568.9	7,755.0	TOG TVD			
11,967.9	11,154.0	CAMEO_TVD			
12,349.9	11,536.0	ROLLINS_TVD			
12,627.9	11,814.0	COZZETTE_TVD			
12,814.9	12,001.0	CORCORAN_TVD			
13,101.9	12,288.0	UPPER_SEGO_TVD			
13,251.9	12,438.0	SEGO_BASE_TARGET_TVD			

Plan Annotations				
Measured Depth	Vertical Depth	Local Coordinates		Comment
(ft)	(ft)	+N/-S (ft)	+E/-W (ft)	
200.0	200.0	0.0	0.0	KOP @ 200' MD
366.7	366.5	7.0	2.1	End Nudg; Inc=5°, Azm=17°
1,158.3	1,122.1	154.9	159.6	EOB; Inc=27.68°
7,646.4	6,867.9	2,003.9	2,539.2	Start 3° Drop @ 7646.4' MD
8,568.9	7,755.0	2,138.0	2,711.7	EOD @ 8568.9' MD
13,251.9	12,438.0	2,137.9	2,711.6	TD @ 13251.9' MD
13,401.9	12,588.0	2,128.1	2,696.7	Permit TD @ 13401.9' MD