

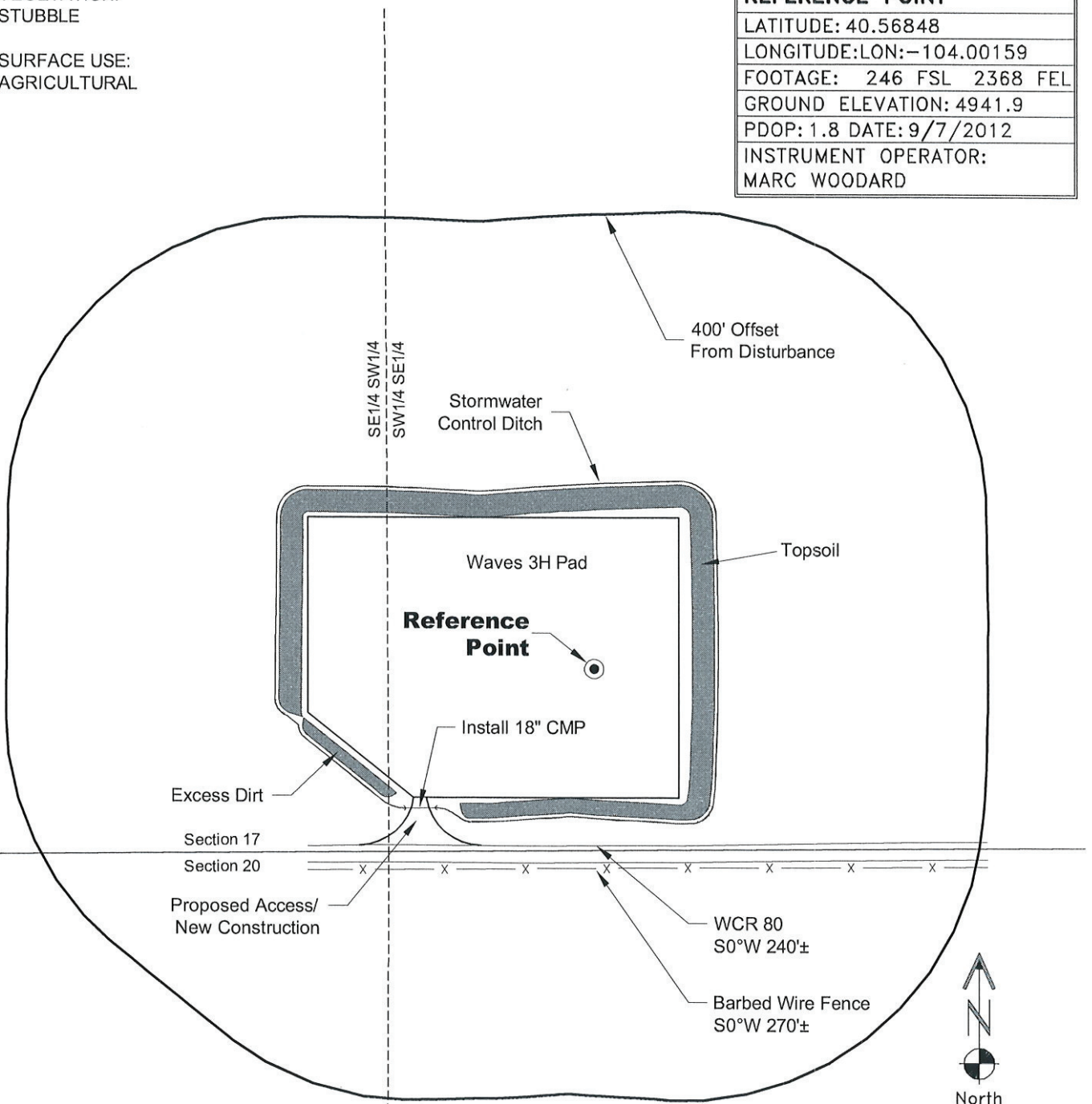
# LOCATION DRAWING

VEGETATION:  
STUBBLE

SURFACE USE:  
AGRICULTURAL

## REFERENCE POINT

LATITUDE: 40.56848
LONGITUDE: LON: -104.00159
FOOTAGE: 246 FSL 2368 FEL
GROUND ELEVATION: 4941.9
PDOP: 1.8 DATE: 9/7/2012
INSTRUMENT OPERATOR: MARC WOODARD

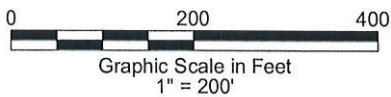


NOTE-DISTANCE TO NEAREST:  
 Property Line - S 246'±  
 Public Road - WCR 80 - S 240'±  
 Building - House S12°W 8,250'±  
 Railroad - S0°E 22.2 Miles±  
 Powerline - N90°W 2,900'±

DISTURBANCE ACREAGE:  
 6.1± DRILLING OPERATIONS  
 1.0± INTERIM RECLAIM

NOTE:  
 ALL PRODUCTION FACILITIES WILL BE ON PAD.

12/21/12



LAND SURVEYING AND MAPPING  
 LAFAYETTE - WINTER PARK  
 Ph 303 666 0379 Fx 303 665 6320

**CONDOR ENERGY TECHNOLOGY LLC**  
**WAVES 3H PAD**

**SW1/4 SE1/4 SECTION 17 T7N R59W**  
**6th PM WELD COUNTY COLORADO**