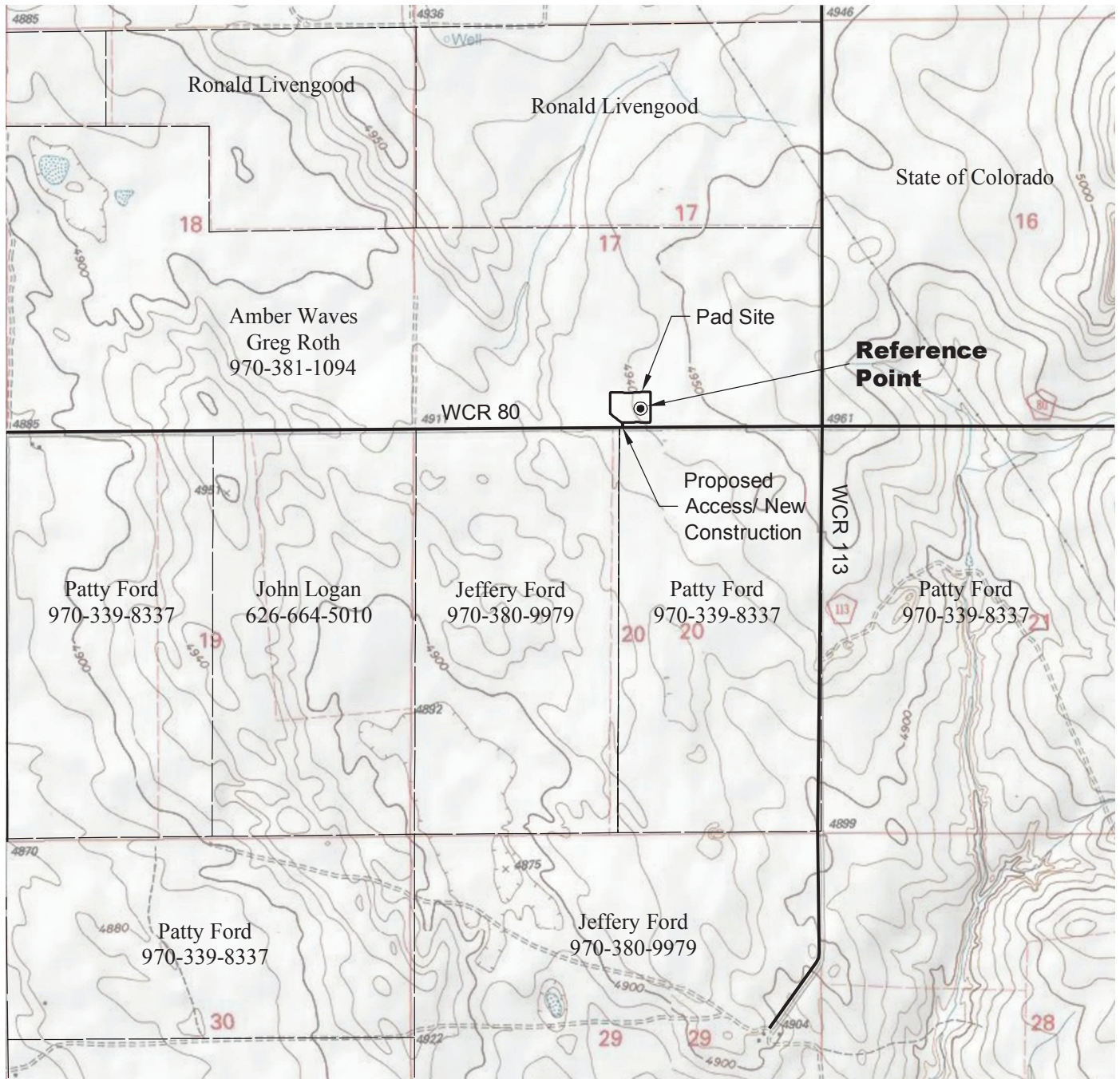


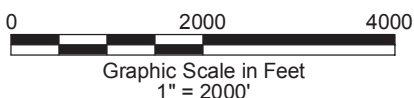
ACCESS ROAD MAP



DRIVING DIRECTIONS:

MP 0.0 - Intersection of Highway 14 a.k.a. WCR 90 & Highway 392 a.k.a. WCR 77 in Briggsdale; East on Highway 14
 MP 13.9 - Right on WCR 105; South along WCR 105
 MP 18.9 - Left on WCR 80; East along WCR 80
 MP 22.5 - Left onto new access to Waves 3H Pad

12/21/12



CONDOR ENERGY TECHNOLOGY LLC
WAVES 3H PAD

SW1/4 SE1/4 SECTION 17 T7N R59W
6th PM WELD COUNTY COLORADO