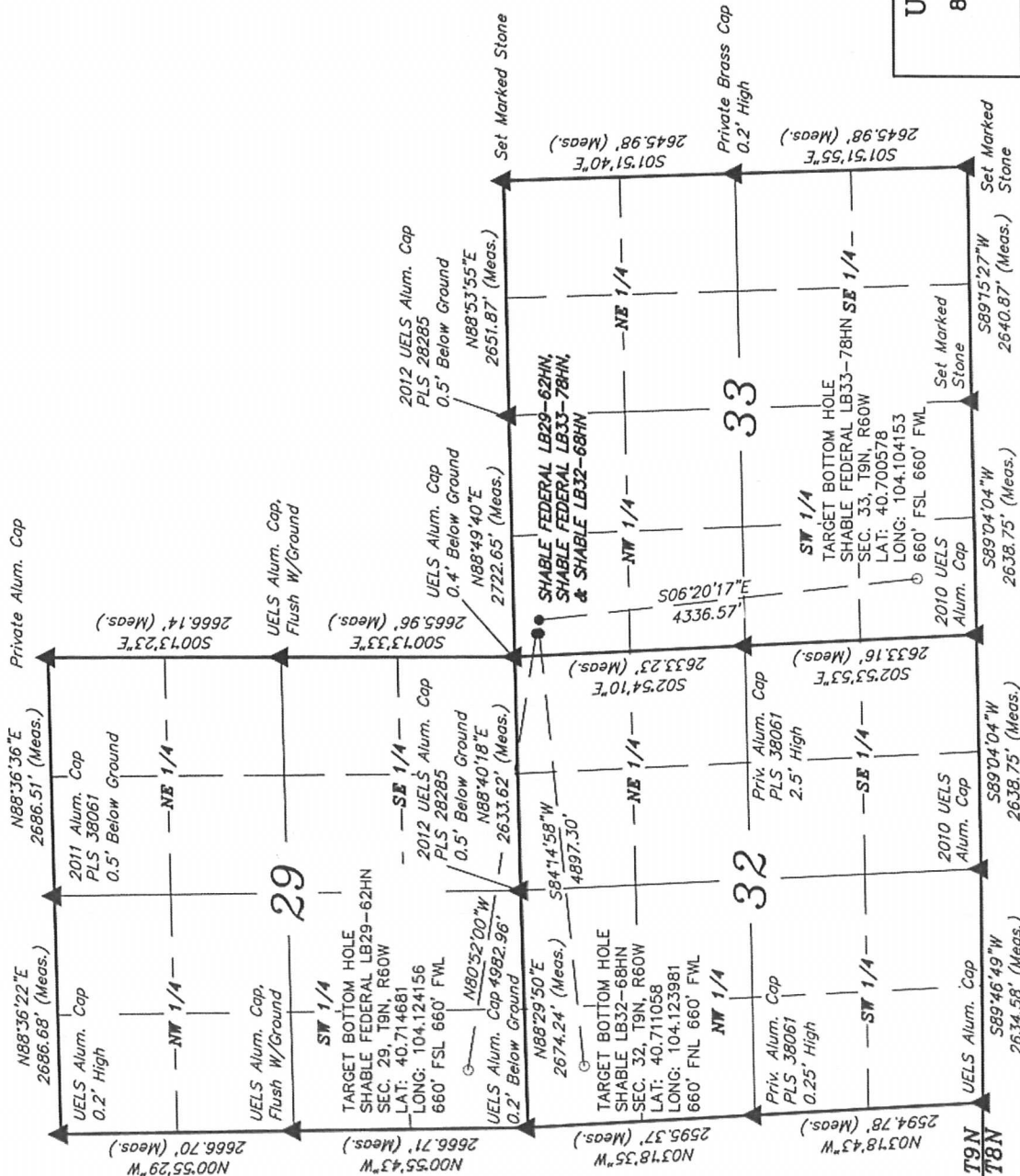


MULTI-WELL PLAN T9N, R60W, 6th P.M.

NOBLE ENERGY, INC.

Well location, SHABLE FEDERAL LB29-62HN, LB33-78HN & SHABLE LB32-68HN located as shown in the NW 1/4 NW 1/4 of Section 33, T9N, R60W, 6th P.M., Weld County, Colorado.

SHABLE FEDERAL LB29-62HN



UNTAH ENGINEERING & LAND SURVEYING
85 SOUTH 200 EAST - VERNAL, UTAH 84078
(435) 789-1017

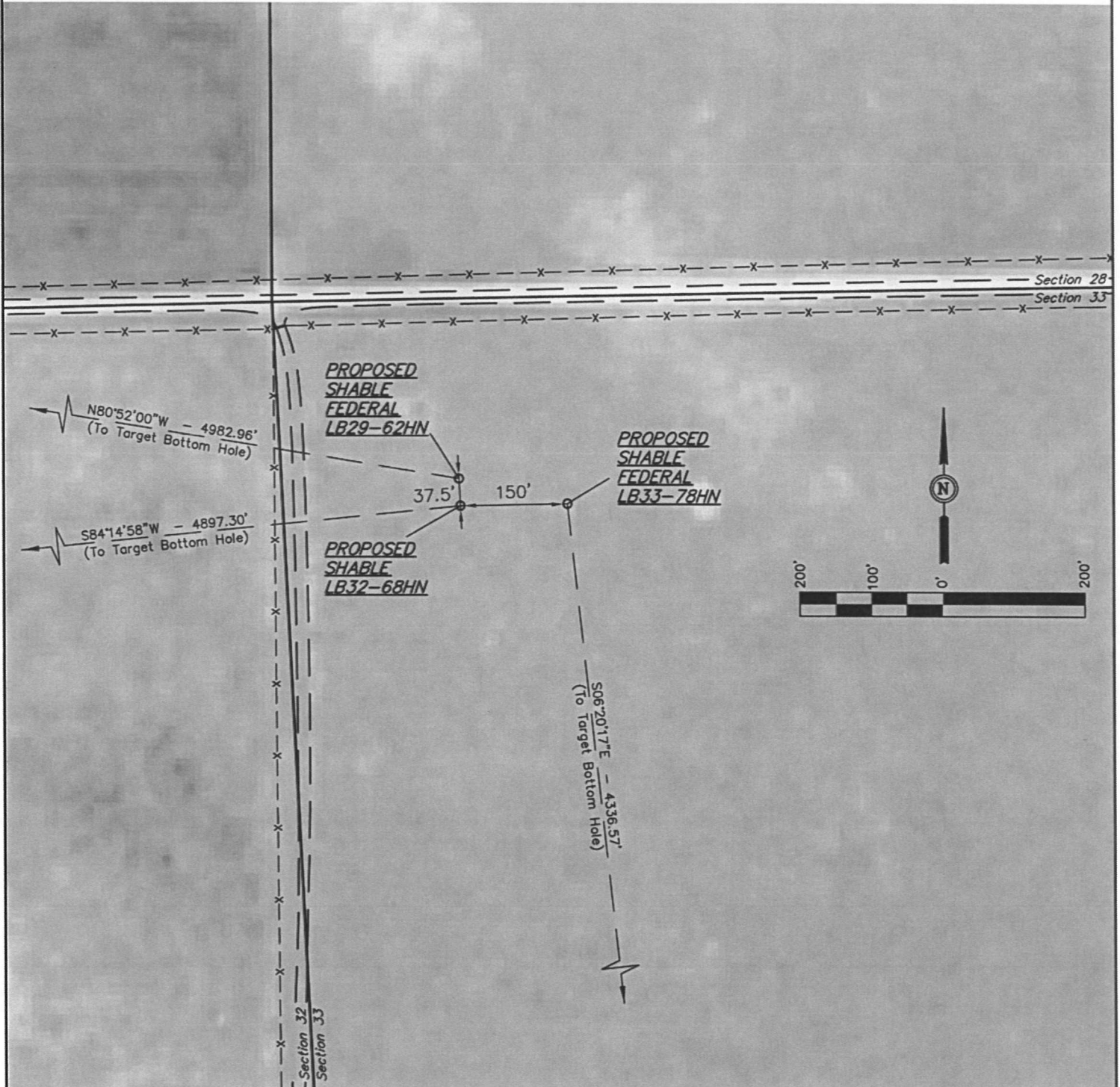
SHABLE FEDERAL LB29-62HN

NOBLE ENERGY, INC.

MULTI-WELL PLAN

SHABLE FEDERAL LB29-62HN,
LB33-78HN & SHABLE LB32-68HN
SECTION 33, T9N, R60W, 6th P.M.

DATE: 09-10-12
DRAWN BY: J.M.H.



PAD DETAILS:

WELL HEAD SPACING = 37.5' & 150'