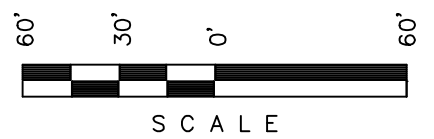


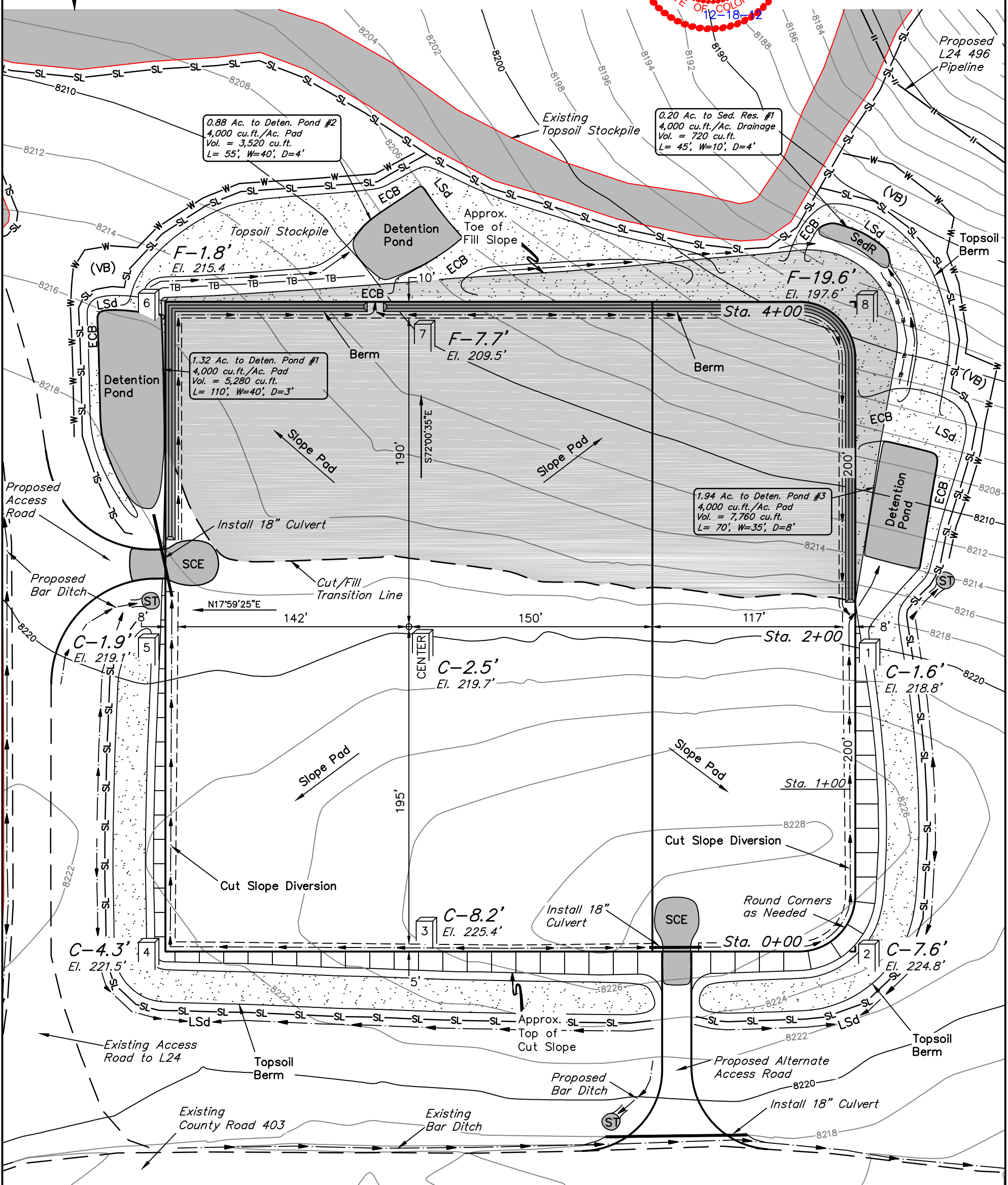
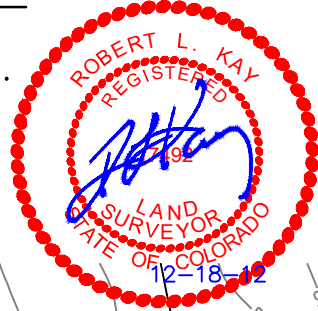
DATE: 10-27-10  
 DRAWN BY: D.R.B.  
 REVISED: 11-15-12 T.B.  
 REVISED: 12-10-12 J.G.G.  
 REVISED: 12-12-12 J.G.G.  
 REVISED: 12-18-12 J.G.G.

Hunter Ridge Energy Services LLC.

CONSTRUCTION LAYOUT FOR  
 FRAC PAD SG K24 496  
 SECTION 24, T4S, R96W, 6th P.M.  
 NE 1/4 SW 1/4



Sheet 2 of 9



0.88 Ac. to Deten. Pond #2  
 4,000 cu.ft./Ac. Pad  
 Vol. = 3,520 cu.ft.  
 L= 55', W=40', D=4'

0.20 Ac. to Sed. Res. #1  
 4,000 cu.ft./Ac. Drainage  
 Vol. = 720 cu.ft.  
 L= 45', W=10', D=4'

1.32 Ac. to Deten. Pond #1  
 4,000 cu.ft./Ac. Pad  
 Vol. = 5,280 cu.ft.  
 L= 110', W=40', D=3'

1.94 Ac. to Deten. Pond #3  
 4,000 cu.ft./Ac. Pad  
 Vol. = 7,760 cu.ft.  
 L= 70', W=35', D=8'

SWMP LEGEND:

- ECB - EROSION CONTROL BLANKET
- Lsd - LEVEL SPREADER
- SCE - STABILIZED CONSTRUCTION ENTRANCE
- SedR - SEDIMENT RESERVOIR
- SL - SLASH
- ST - SEDIMENT TRAP
- TB - TOE BERM
- VB - VEGETATED BUFFER
- W - WATTLE

CENTER OF PAD	
LATITUDE (83)	LONGITUDE (83)
39°41'03.99"	108°07'15.18"
LATITUDE (27)	LONGITUDE (27)
39°41'04.08"	108°07'12.89"

Elev. Ungraded Ground At Center Pad = 8219.7'  
 FINISHED GRADE ELEV. AT CENTER PAD = 8217.2'

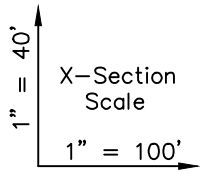
Hunter Ridge Energy Services LLC.

CONSTRUCTION LAYOUT CROSS SECTION FOR

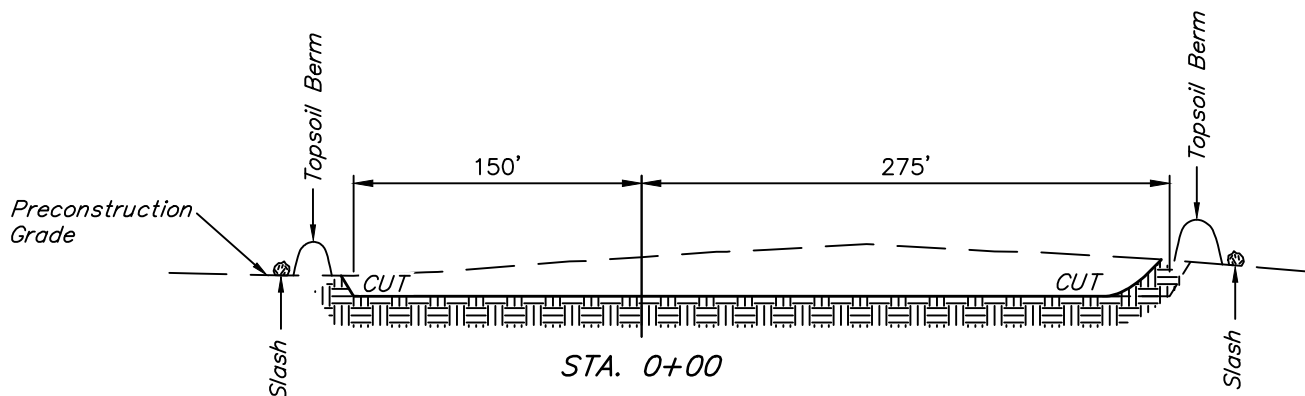
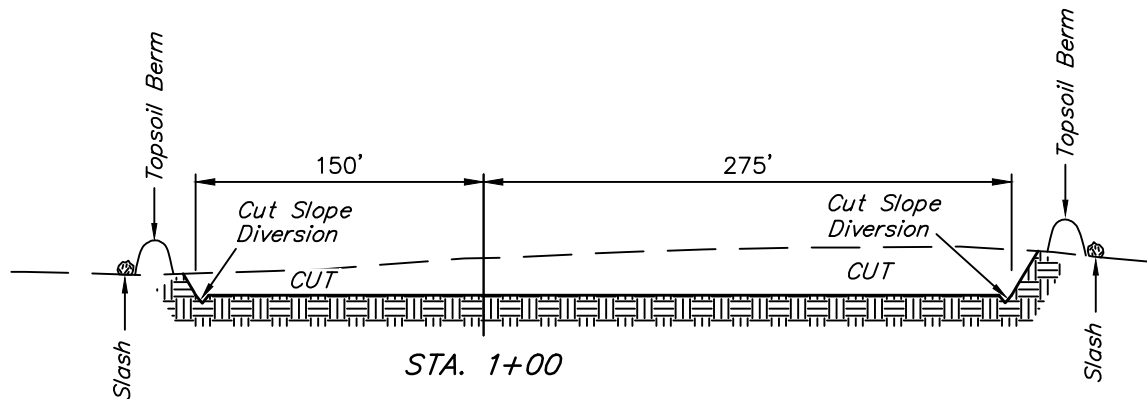
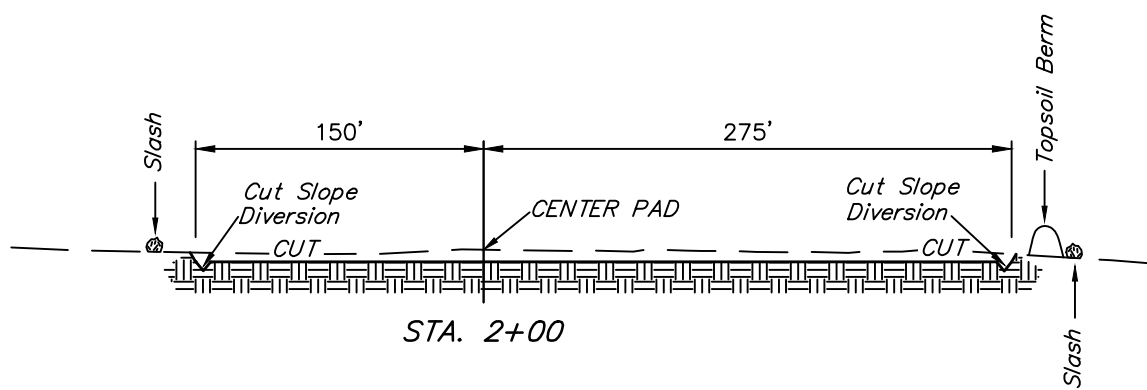
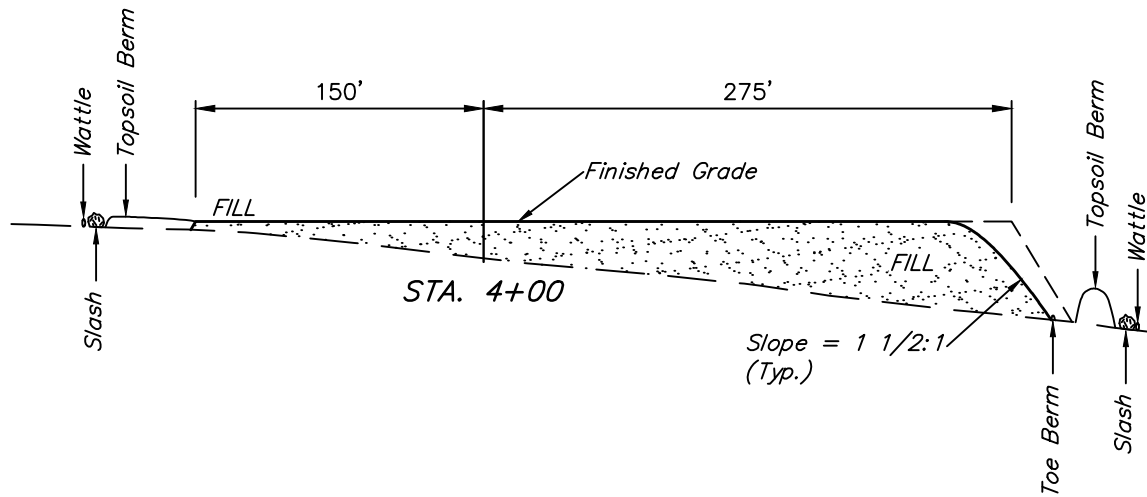
FRAC PAD SG K24 496

SECTION 24, T4S, R96W, 6th P.M.

NE 1/4 SW 1/4



DATE: 10-27-10  
DRAWN BY: D.R.B.  
REVISED: 11-15-12 T.B.  
REVISED: 12-10-12 J.G.G.  
REVISED: 12-12-12 J.G.G.  
REVISED: 12-18-12 J.G.G.



NOTE:  
Topsoil should not be Stripped Below Finished Grade on Substructure Area.

\* NOTE:  
FILL QUANTITY INCLUDES 5% FOR COMPACTION

APPROXIMATE YARDAGES

(12") Topsoil Stripping = 6,990 Cu. Yds.  
Remaining Location = 20,230 Cu. Yds.  
TOTAL CUT = 27,220 CU.YDS.  
FILL = 20,230 CU.YDS.

EXCESS MATERIAL = 6,990 Cu. Yds.  
Topsoil = 6,990 Cu. Yds.  
EXCESS UNBALANCE = 0 Cu. Yds.  
(After Interim Rehabilitation)