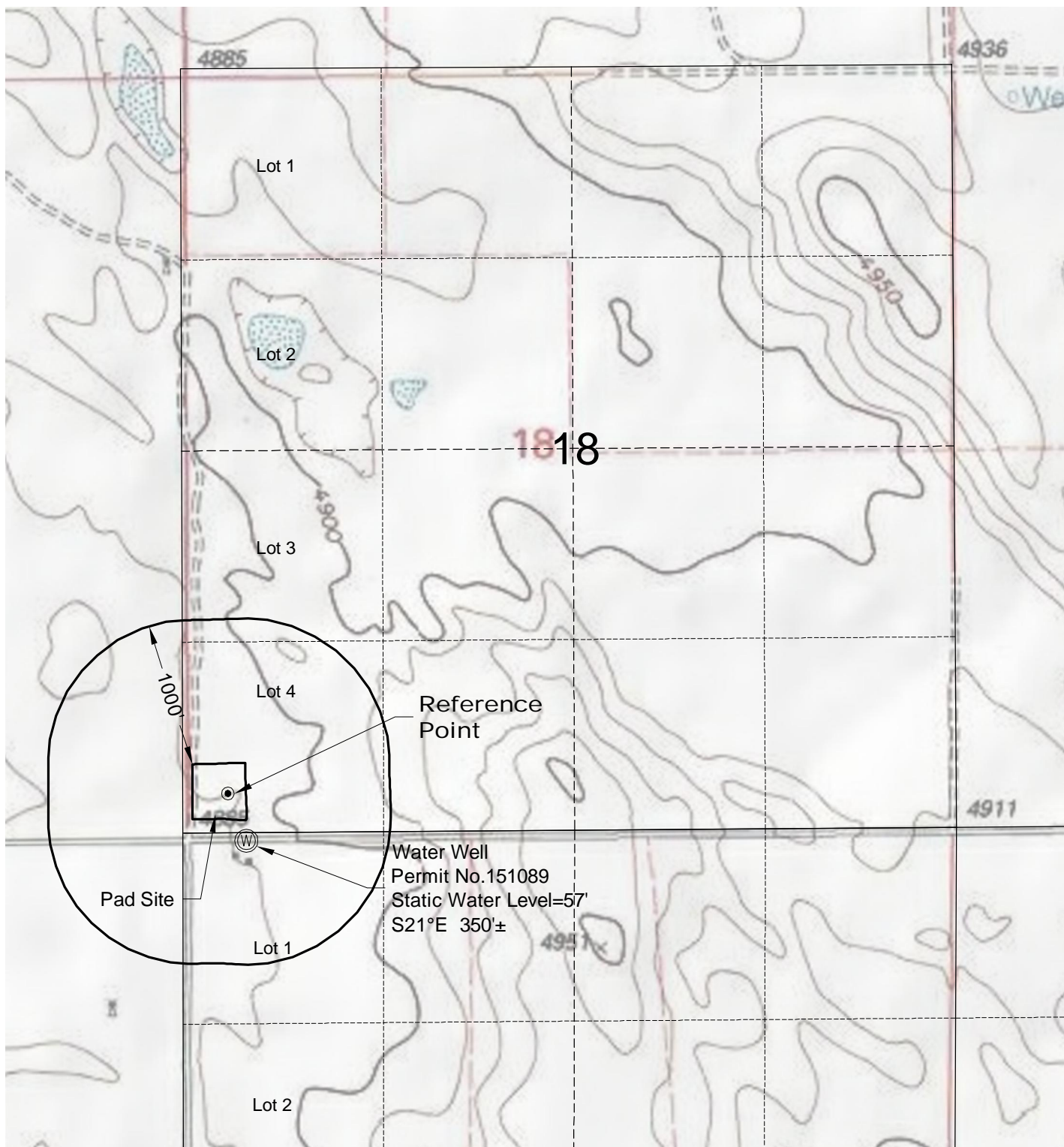


HYDROLOGY MAP



Water Well
 Permit No. 151089
 Static Water Level=57'
 S21°E 350'±

1/3/13

GEO SURV
 LAND SURVEYING AND MAPPING
 LAFAYETTE - WINTER PARK
 Ph 303 666 0379 Fx 303 665 6320

CONDOR ENERGY TECHNOLOGY LLC
WAVES 2H PAD

LOT 4 SECTION 18 T7N R59W
6th PM WELD COUNTY COLORADO