

LOCATION DRAWING

VEGETATION:
STUBBLE

SURFACE USE:
AGRICULTURAL

REFERENCE POINT

LATITUDE: 40.56875

LONGITUDE: LON: -104.03032

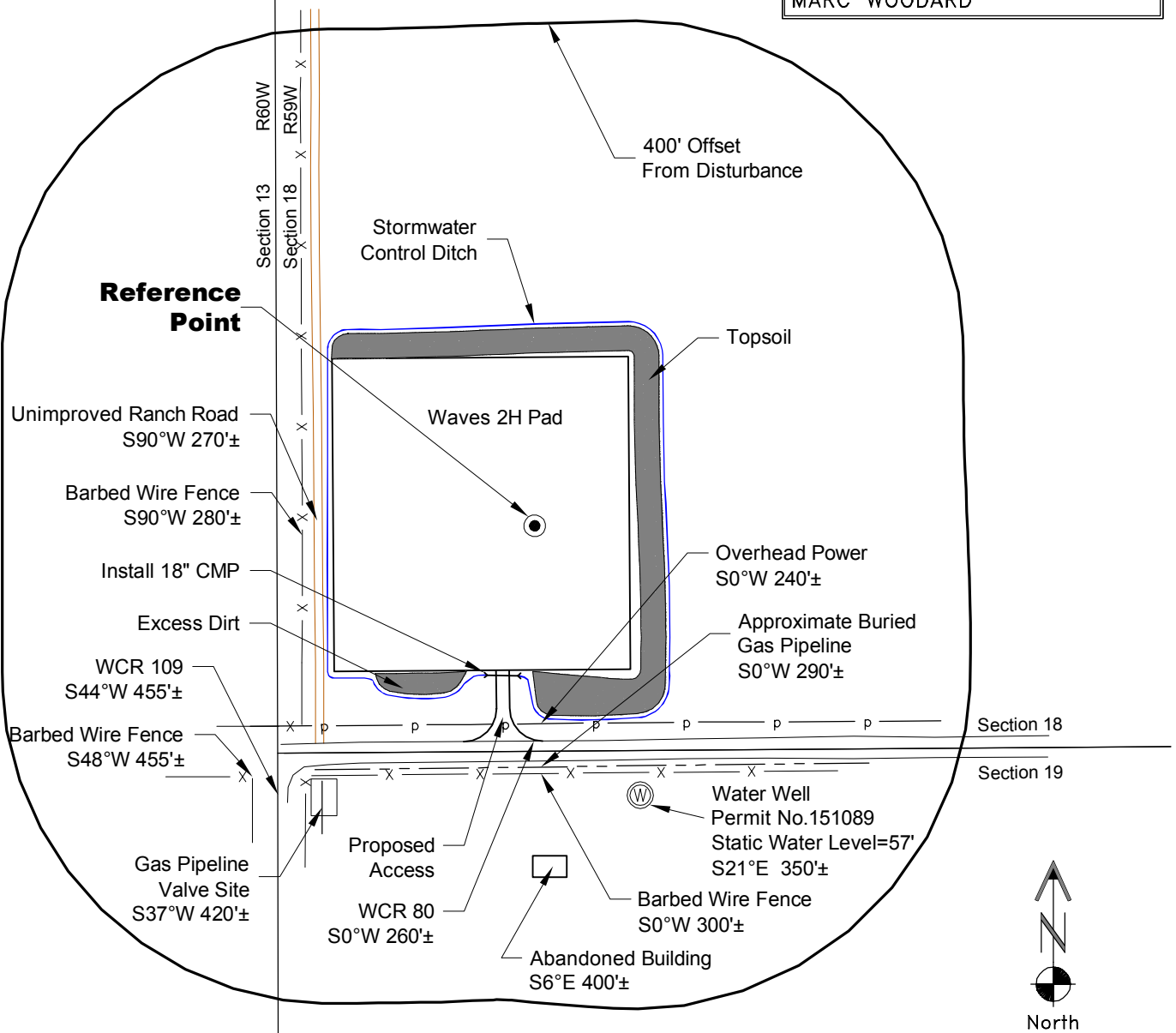
FOOTAGE: 274 FSL 313 FWL

GROUND ELEVATION: 4887.3

PDOP: 1.8 DATE: 9/7/2012

INSTRUMENT OPERATOR:

MARC WOODARD



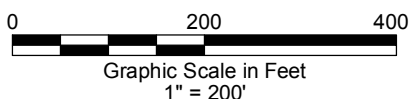
NOTE-DISTANCE TO NEAREST:
Property Line - S 274'±
Public Road - WCR 80 - S 275'±
Building - House S35°W 6,400'±
Railroad - S5°E 22.2 Miles±
Powerline - S 240'±

DISTURBANCE ACREAGE:
4.5± DRILLING OPERATIONS
1.0± INTERIM RECLAIM

NOTE:

ALL PRODUCTION FACILITIES WILL BE ON PAD.

1/3/13



LAND SURVEYING AND MAPPING
LAFAYETTE - WINTER PARK
Ph 303 666 0379 Fx 303 665 6320

CONDOR ENERGY TECHNOLOGY LLC
WAVES 2H PAD

LOT 4 SECTION 18 T7N R59W
6th PM WELD COUNTY COLORADO