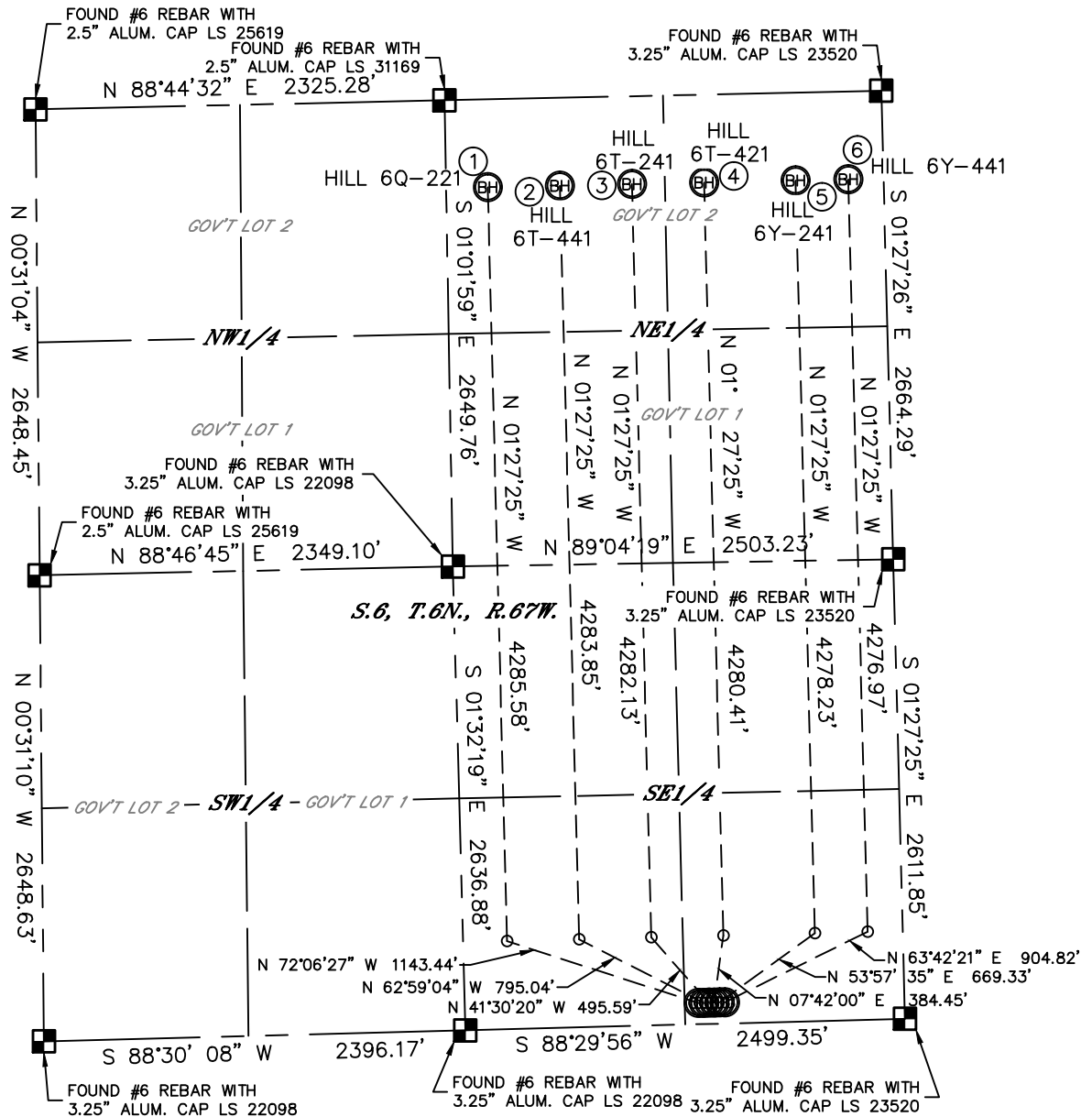


## MULTI-WELL PLAN

HILL 6T-HZ PAD

THIS MAP DOES NOT REPRESENT A BOUNDARY SURVEY

SECTION: 6  
TOWNSHIP: 6N  
RANGE: 67W



- | ①   | ②   | ③   | ④   | ⑤  | ⑥  |
|---|---|---|---|--|--|
| —BOTTOM HOLE—<br>HILL 6Q-221<br>500' FNL<br>2250' FEL<br>LAT: 40.52150°N<br>LONG: 104.93502°W | —BOTTOM HOLE—<br>HILL 6T-441<br>500' FNL<br>1840' FEL<br>LAT: 40.52152°N<br>LONG: 104.93355°W | —BOTTOM HOLE—<br>HILL 6T-241<br>500' FNL<br>1430' FEL<br>LAT: 40.52154°N<br>LONG: 104.93207°W | —BOTTOM HOLE—<br>HILL 6T-421<br>500' FNL<br>1020' FEL<br>LAT: 40.52156°N<br>LONG: 104.93060°W | —BOTTOM HOLE—<br>HILL 6Y-241<br>500' FNL<br>500' FEL<br>LAT: 40.52158°N<br>LONG: 104.92873°W | —BOTTOM HOLE—<br>HILL 6Y-441<br>500' FNL<br>200' FEL<br>LAT: 40.52159°N<br>LONG: 104.92765°W |



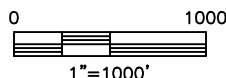
### LEGEND



= ALIQUOT MONUMENT AS DESCRIBED



= CALCULATED POSITION



DATE: rev 12/26/12  
PROJECT#: 2012066

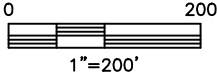
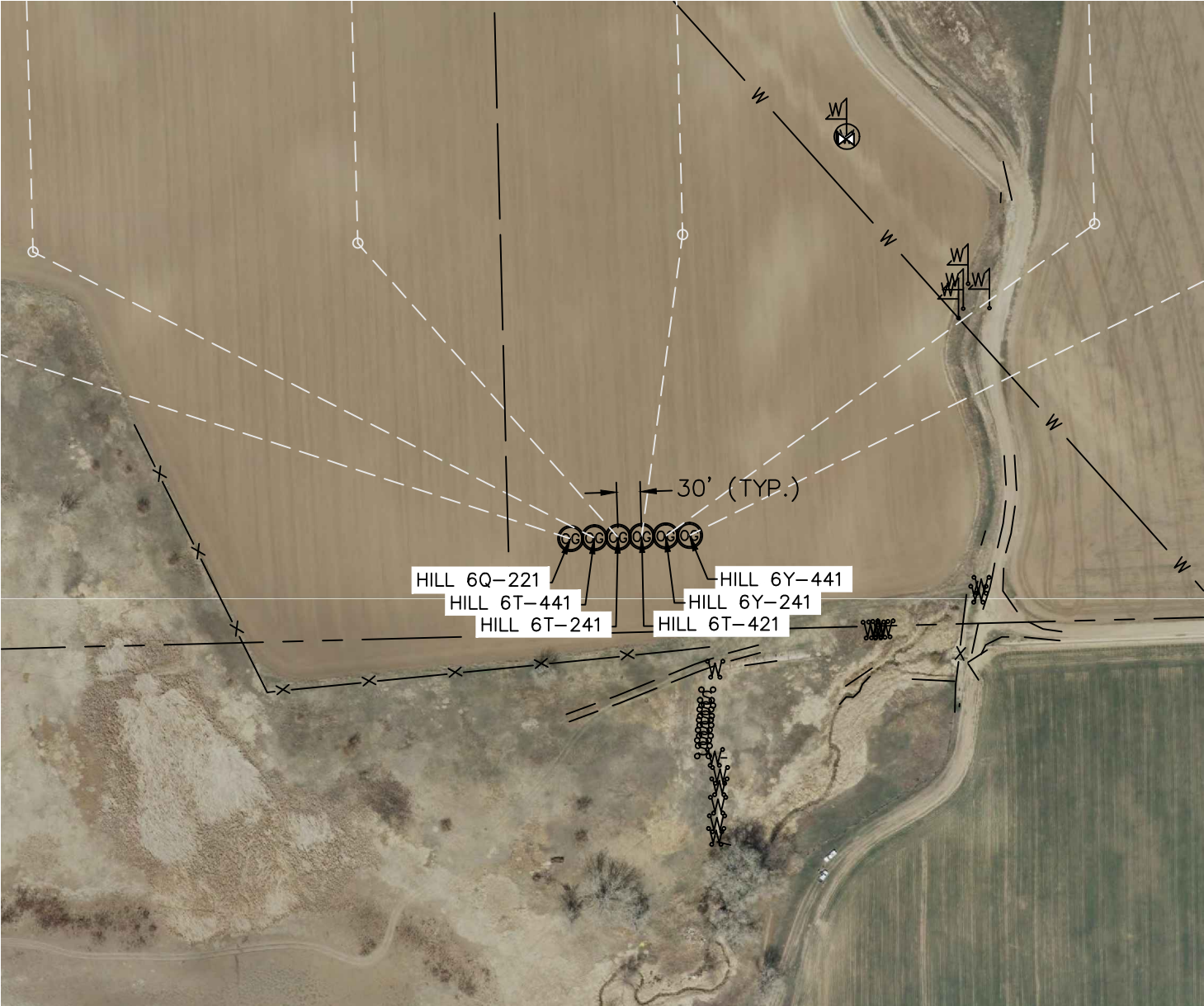


Lat40°, Inc. 1635 Foxtrail Drive, Suite 325 Loveland, CO 970-776-3321

MULTI-WELL PLAN

HILL 6T-HZ PAD

SECTION: 6  
TOWNSHIP: 6N  
RANGE: 67W



DATE: rev 12/26/12  
PROJECT#: 2012066