

GREAT WESTERN OIL & GAS COMPANY

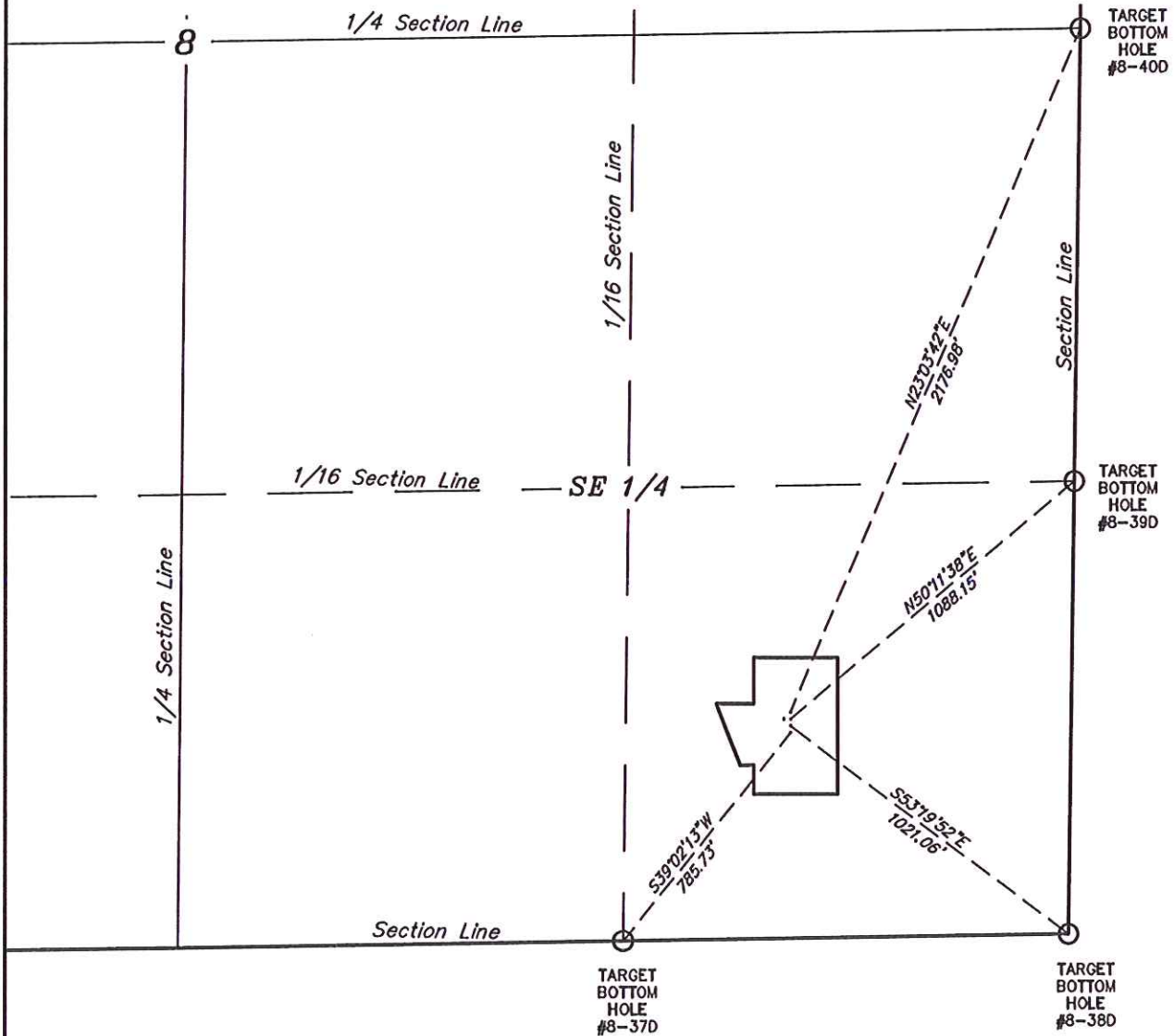
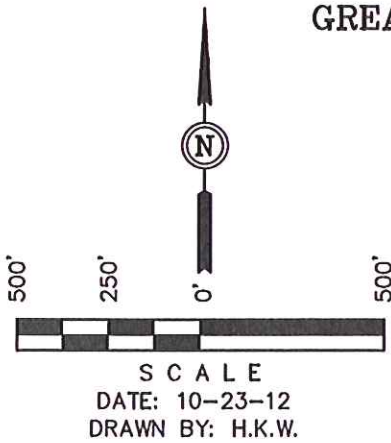
TARGET BOTTOM HOLE DRAWING FOR

NEW CACHE FH #8-37D, #8-38D,
#8-39D & #8-40D

SECTION 8, T6N, R63W, 6th. P.M.

SE 1/4 SE 1/4

FIGURE #6



UINTAH ENGINEERING & LAND SURVEYING

85 So. 200 East * Vernal, Utah 84078 * (435) 789-1017