

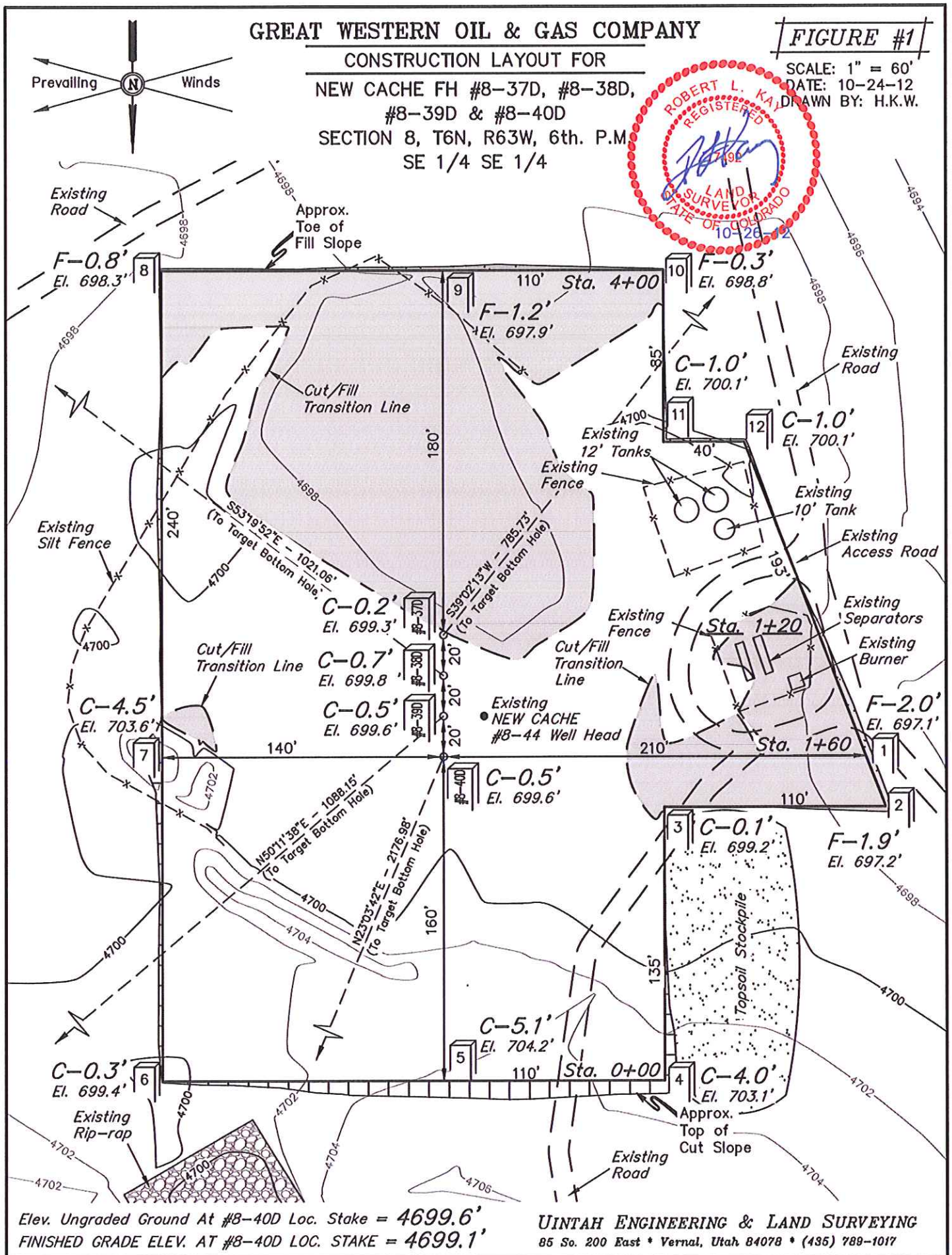
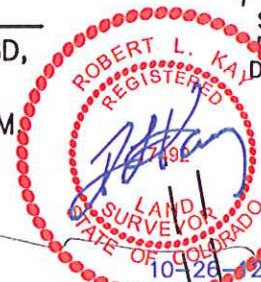
GREAT WESTERN OIL & GAS COMPANY

CONSTRUCTION LAYOUT FOR

NEW CACHE FH #8-37D, #8-38D,
#8-39D & #8-40D
SECTION 8, T6N, R63W, 6th. P.M.
SE 1/4 SE 1/4

FIGURE #1

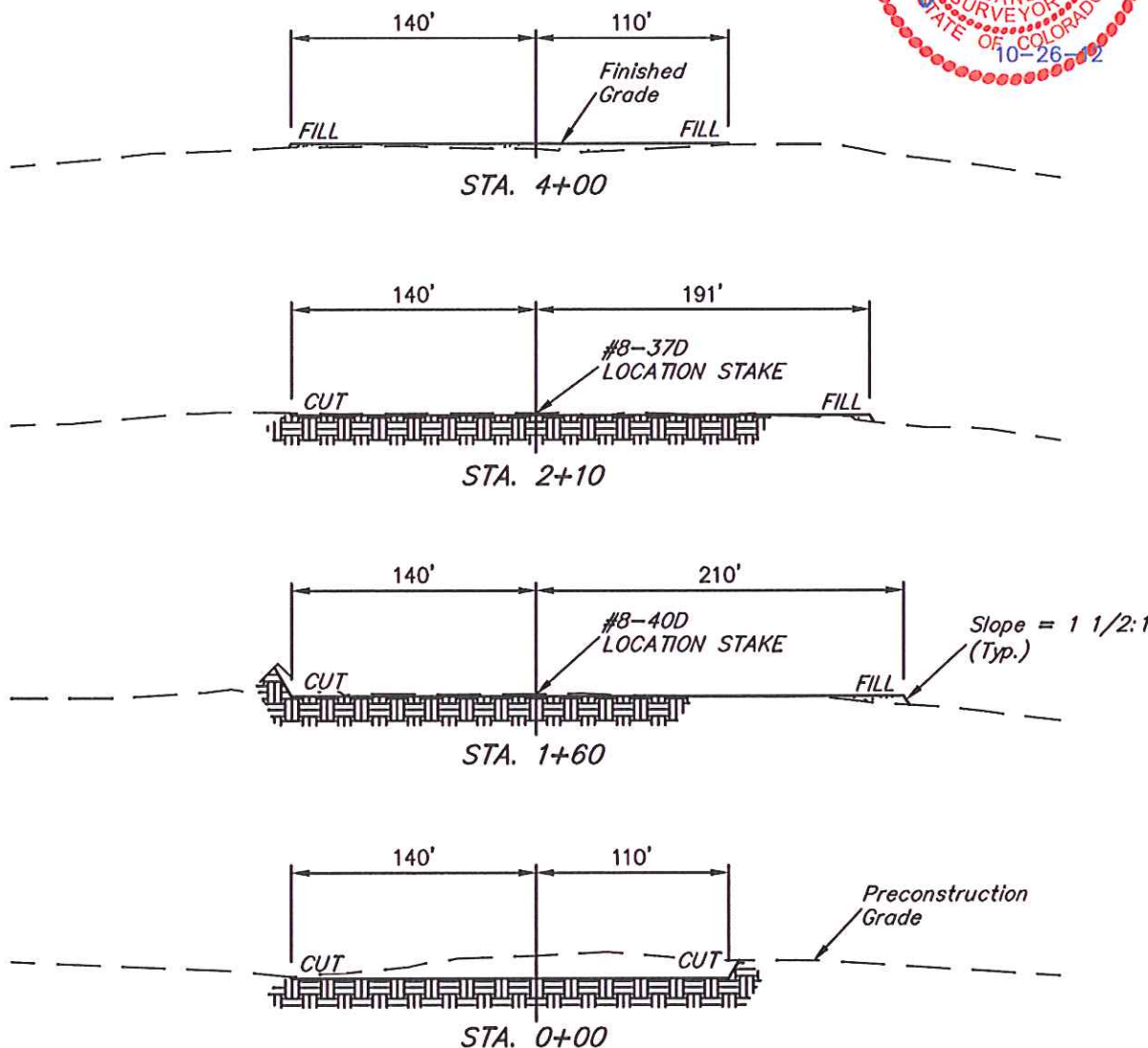
SCALE: 1" = 60'
DATE: 10-24-12
DRAWN BY: H.K.W.



1" = 40'
X-Section
Scale
1" = 100'
DATE: 10-24-12
DRAWN BY: H.K.W.

GREAT WESTERN OIL & GAS COMPANY
CONSTRUCTION LAYOUT CROSS SECTIONS FOR
NEW CACHE FH #8-37D, #8-38D,
#8-39D & #8-40D
SECTION 8, T6N, R63W, 6th. P.M.
SE 1/4 SE 1/4

FIGURE #2



NOTE:

Topsoil should not be
Stripped Below Finished
Grade on Substructure Area.

APPROXIMATE ACREAGES
WELL SITE DISTURBANCE = ± 2.878 ACRES

*** NOTE:**
FILL QUANTITY INCLUDES
5% FOR COMPACTION

APPROXIMATE YARDAGES

(6") Topsoil Stripping = 2,170 Cu. Yds.
Remaining Location = 2,490 Cu. Yds.
TOTAL CUT = 4,660 CU. YDS.
FILL = 2,490 CU. YDS.

EXCESS MATERIAL = 2,170 Cu. Yds.
Topsoil = 2,170 Cu. Yds.

EXCESS UNBALANCE = 0 Cu. Yds.
(After Interim Rehabilitation)

UINTAH ENGINEERING & LAND SURVEYING
85 So. 200 East * Vernal, Utah 84078 * (435) 789-1017

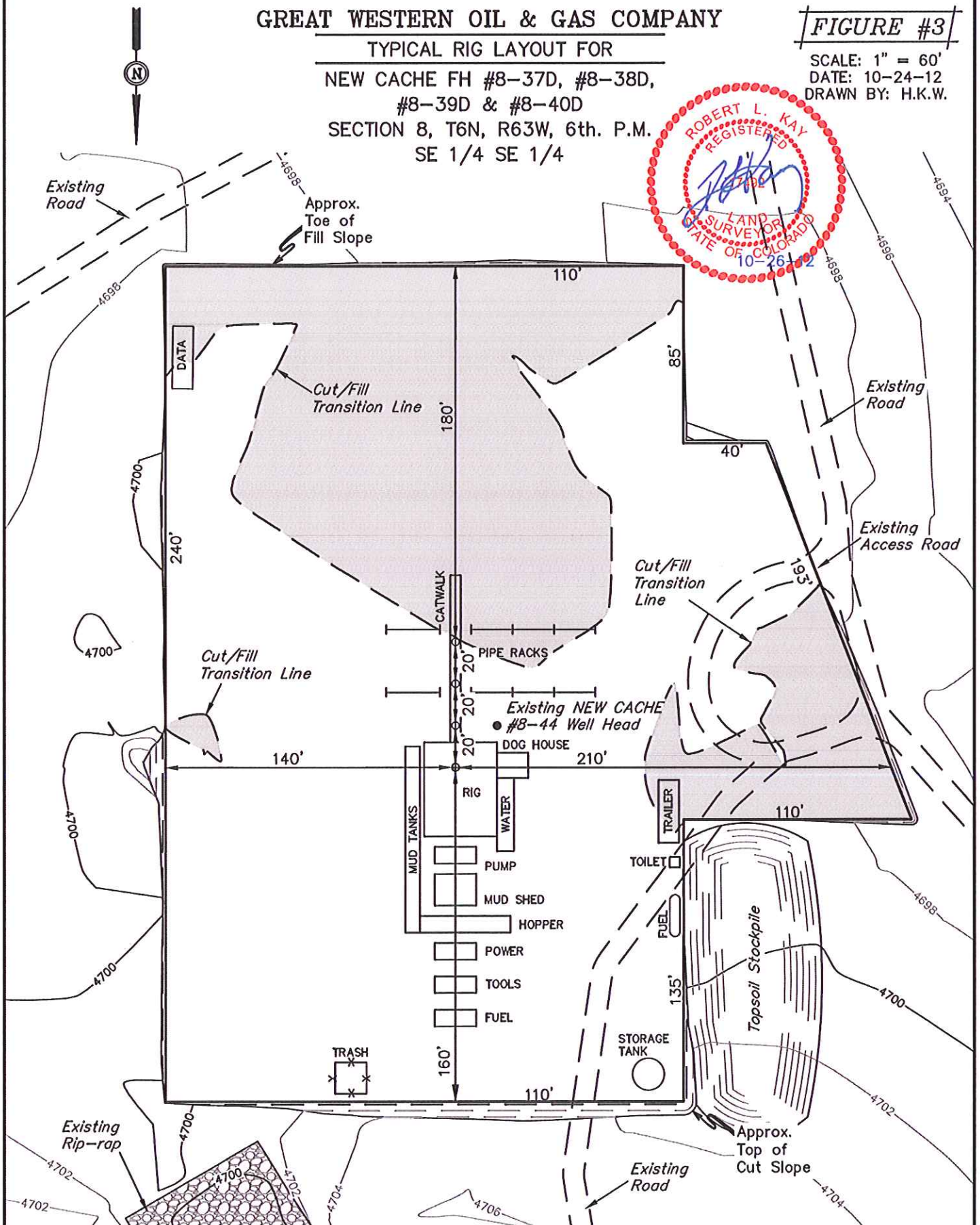
GREAT WESTERN OIL & GAS COMPANY

TYPICAL RIG LAYOUT FOR

NEW CACHE FH #8-37D, #8-38D,
#8-39D & #8-40D
SECTION 8, T6N, R63W, 6th. P.M.
SE 1/4 SE 1/4

FIGURE #3

SCALE: 1" = 60'
DATE: 10-24-12
DRAWN BY: H.K.W.



UINTAH ENGINEERING & LAND SURVEYING
85 So. 200 East * Vernal, Utah 84078 * (435) 789-1017