

SUMMARY Total Volume of Contaminated Soil (estimated)

Main Treater Overflow Pit:	1930 cubic yards
Noffsinger Pit	530 cubic yards
Previous stockpile	250 cubic yards
<hr/>	
Total	2710 cubic yards

6/19/2012 Treater Overflow Pit Fac ID 115241

Personnel on site: Sessions and Sons: Excavation Contractor (5 personnel, track hoe, loader, vac truck)
Lone Pine Gas, Inc. : Ray Power, David Schleppy
Colorado Oil & Gas Commission: Alex Fischer
North Park Engineering & Consulting, Inc.: Randy Miller

Construct straw filter on bank adjacent to Pond 1.
Begin pumping water from pit to Pond 1 and skimming oil using vac truck. Oil placed in tanks for treatment/disposal.
Began excavation and removal of pit liner above the water level.
The fluid level was lowered approximately 5 - 6 feet with no apparent recharge.
Soil is being stockpiled at the Margaret Spaulding 4 and Margaret Spaulding 14 pad (Location ID: 324634).
The pads are bermed and maintained to prevent storm water runoff.

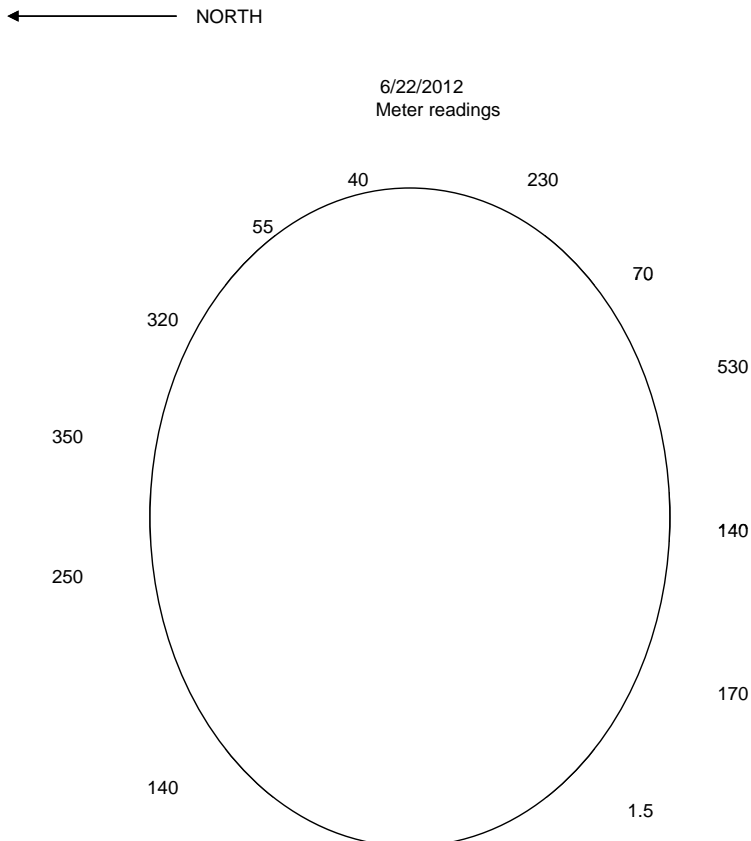
6/20/2012 Treater Overflow Pit Fac ID 115241

Personnel on site: Sessions & Sons: 5 personnel, track hoe, loader, vac truck
Lone Pine Gas, Inc.: Ray Power, David Schleppy
Colorado Oil & Gas Commission: Alex Fisher, Kris Neidel
North Park Engineering & Consulting, Inc.: Randy Miller, Rex Shaw

Excavation of the contaminated soil and liner above the water level was initiated.
Approx 30 cubic yards of soil was removed and stock piled.

6/21/12 and 6/22/12 Treater Overflow Pit Fac ID 115241

Sessions: squeezed pit with excavator, remove clean pit wall and stockpile with loader, pump pit

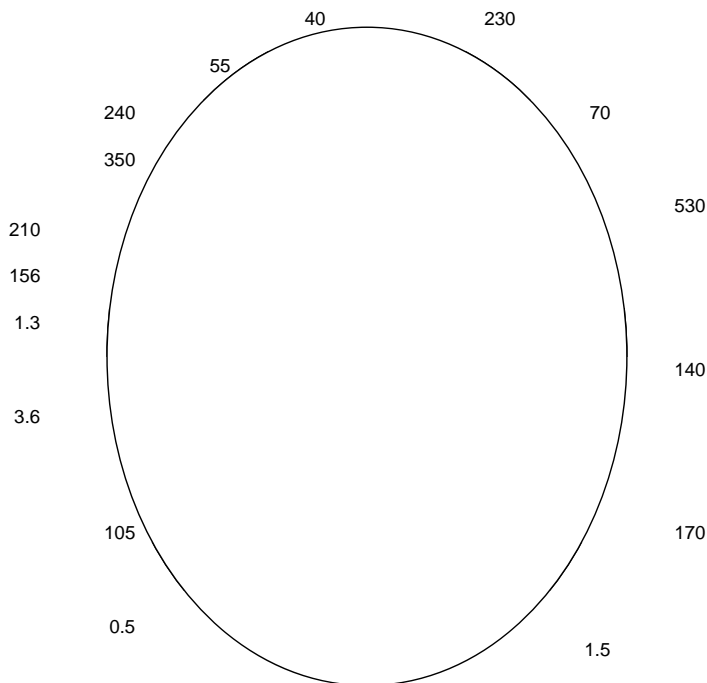


6/25/2012 Treater Overflow Pit Fac ID 115241

Sessions; squeeze pit with excavator and pump squeezed pit

← NORTH

6/25/2012 @ approx 10' cut
MiniRAE 3000 Meter readings



6/26/12, 6/27/12 & 6/28/12 Treater Overflow Pit Fac ID 115241

Sessions: Finished squeezing pit, pumped pit down to approx. 40 bbls.

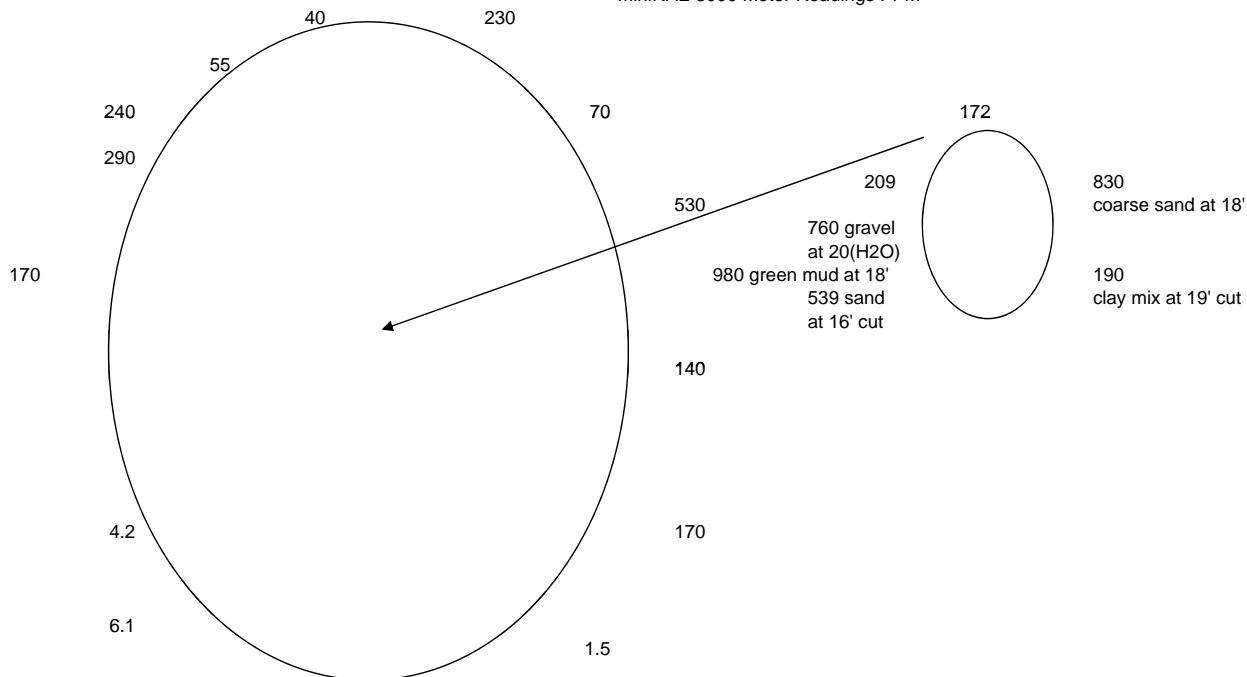
Mixed contaminated soil with pit bottom. Stockpiled 670 cu. yds. of contaminated soil.

Soil is being stockpiled at the Margaret Spaulding 4 and I 6/28/2012 @ approx 10' cut

The pads are bermed and maintained to prevent storm w MiniRAE 3000 Meter readings PPM

← NORTH

6/28/2012 at inside edge of cut channel
MiniRAE 3000 Meter Readings PPM



6/29/2012 Treater Overflow Pit Fac ID 115241

Sessions: Dug pit down to water table.

Stockpiled 220 cu. Yds. of contaminated soil.

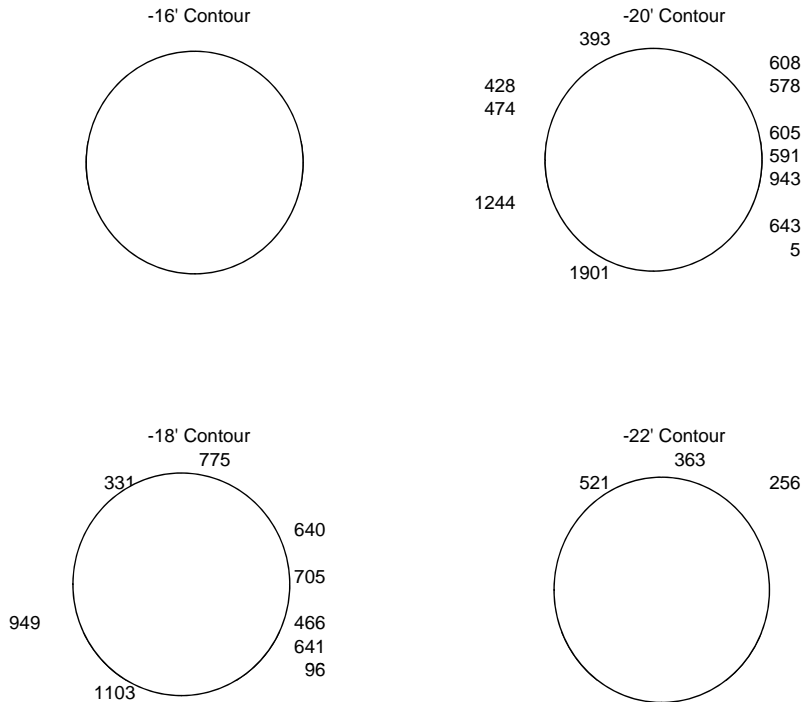
Soil is being stockpiled at the Margaret Spaulding 4 and Margaret Spaulding 14 pad (Location ID: 324634).

The pads are bermed and maintained to prevent storm water runoff.

6/29/2012

MiniRAE 3000 Meter Readings PPM

← NORTH



7/2/2012 Noffsinger 1C Pit Fac ID 115268

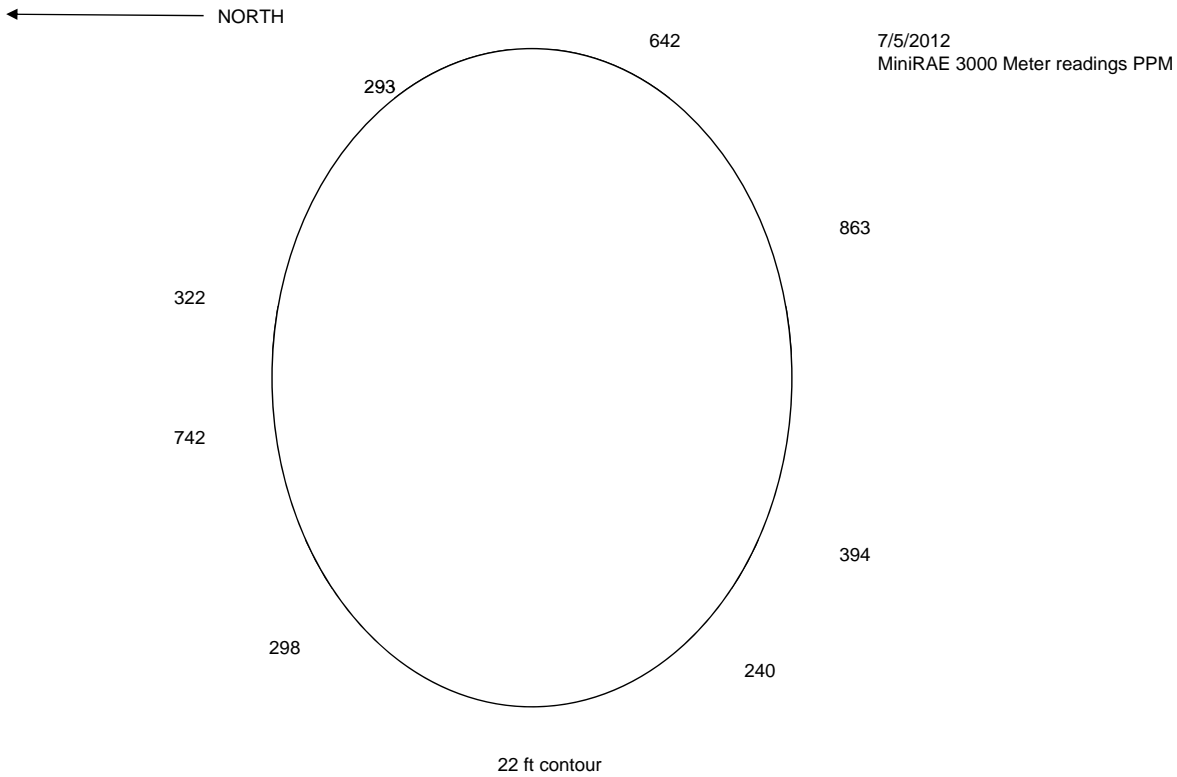
Sessions: Stockpiled 420 cu. yds of contaminated soil from the Noffsinger Pit.

7/3/2012 Noffsinger 1C Pit Fac ID 115268

Sessions: Stockpiled 110 cu. yds. of contaminated soil from the Noffsinger Pit. Dumped approx. 20 bbls of tank bottom from frac tank, mixed w/ contaminated soil and stockpiled.

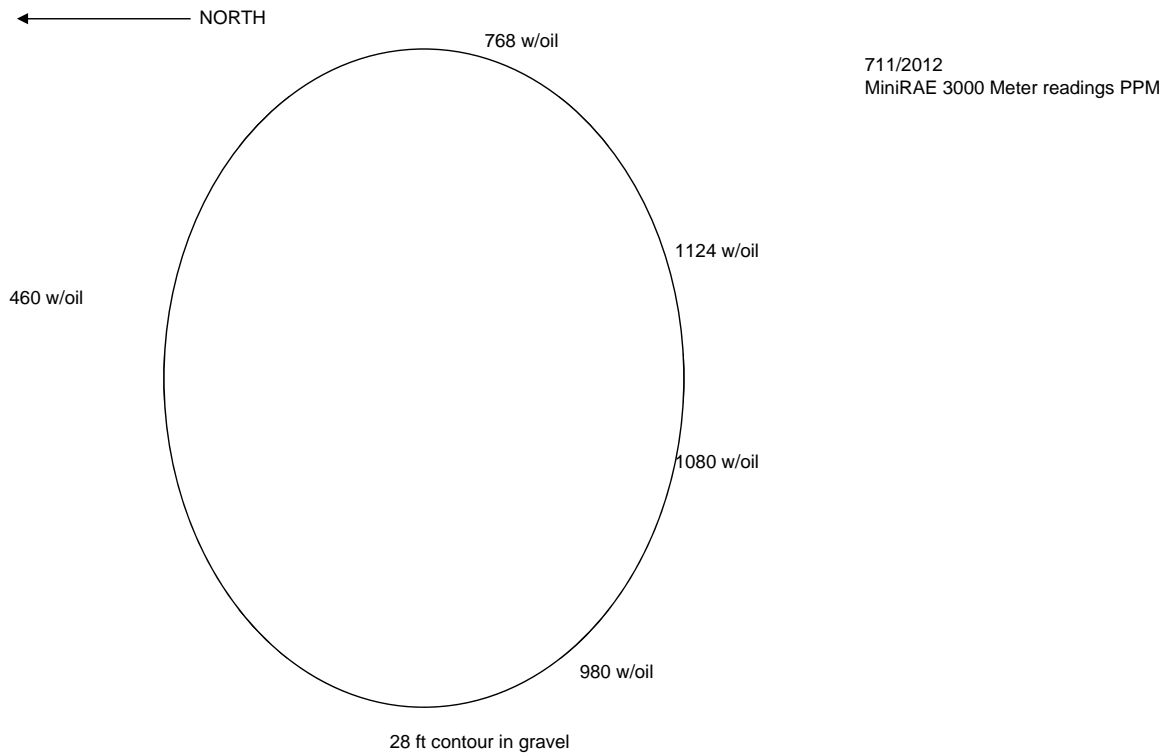
7/5/2012 Treater Overflow Pit Fac ID 115241

Sessions: Sloped pit excavation to safety limit, pumped water from pit with vac truck and deepen pit two feet. Stockpiled 280 cu. yds. of contaminated soil.
Soil is being stockpiled at the Margaret Spaulding 4 and Margaret Spaulding 14 pad (Location ID: 324634).
The pads are bermed and maintained to prevent storm water runoff.



7/11/2012 Treater Overflow Pit Fac ID 115241

Sessions dug out to bottom limit. Stockpiled 450 cu. yds of contaminated soil
Soil is being stockpiled at the Margaret Spaulding 4 and Margaret Spaulding 14 pad (Location ID: 324634).
The pads are bermed and maintained to prevent storm water runoff.



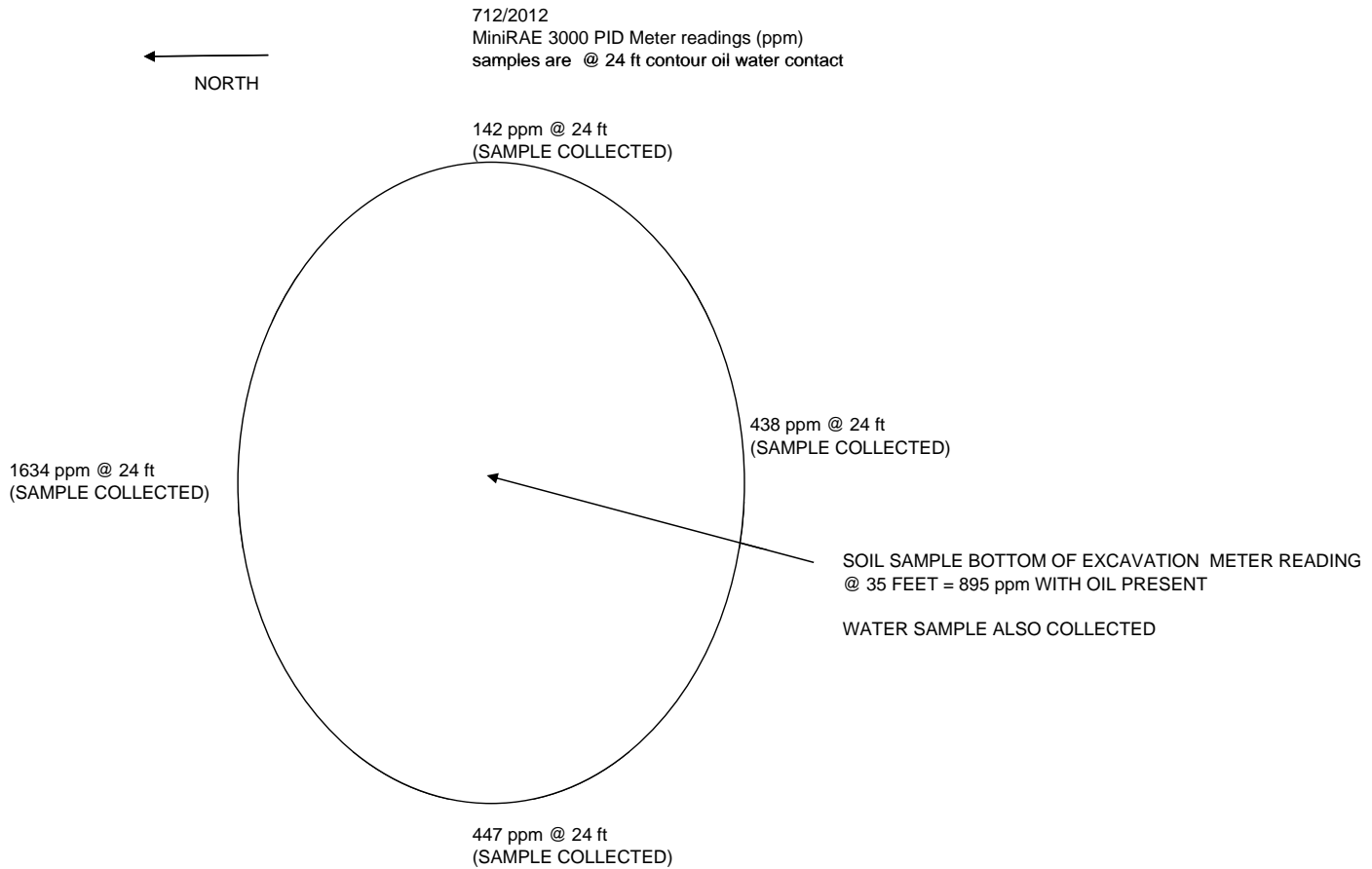
7/12/2012 Treater Overflow Pit Fac ID 115241

Sessions sloped out pit, sampled pit with Randy . Measured fluid levels in monitor wells.

Stockpiled 280 cu. yds. of contaminated soil.

Soil is being stockpiled at the Margaret Spaulding 4 and Margaret Spaulding 14 pad (Location ID: 324634).

The pads are bermed and maintained to prevent storm water runoff.



7/12/2012 Noffsinger 1C Pit Fac ID 115268

Collected 1 sample from the bottom of each pit (2 total).

North Pit PID = 15 ppm

South Pit PID = 12 ppm