

GREAT WESTERN OIL & GAS COMPANY

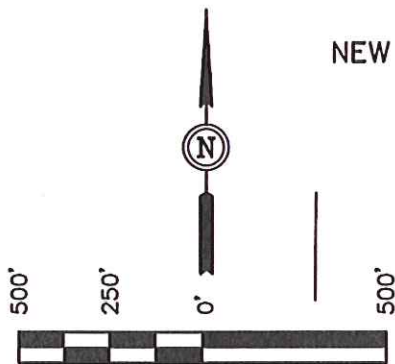
FIGURE #5

TARGET BOTTOM HOLE DRAWING FOR

NEW CACHE FH #8-14D, #17-28D & #8-13D

SECTION 8, T6N, R63W, 6th P.M.

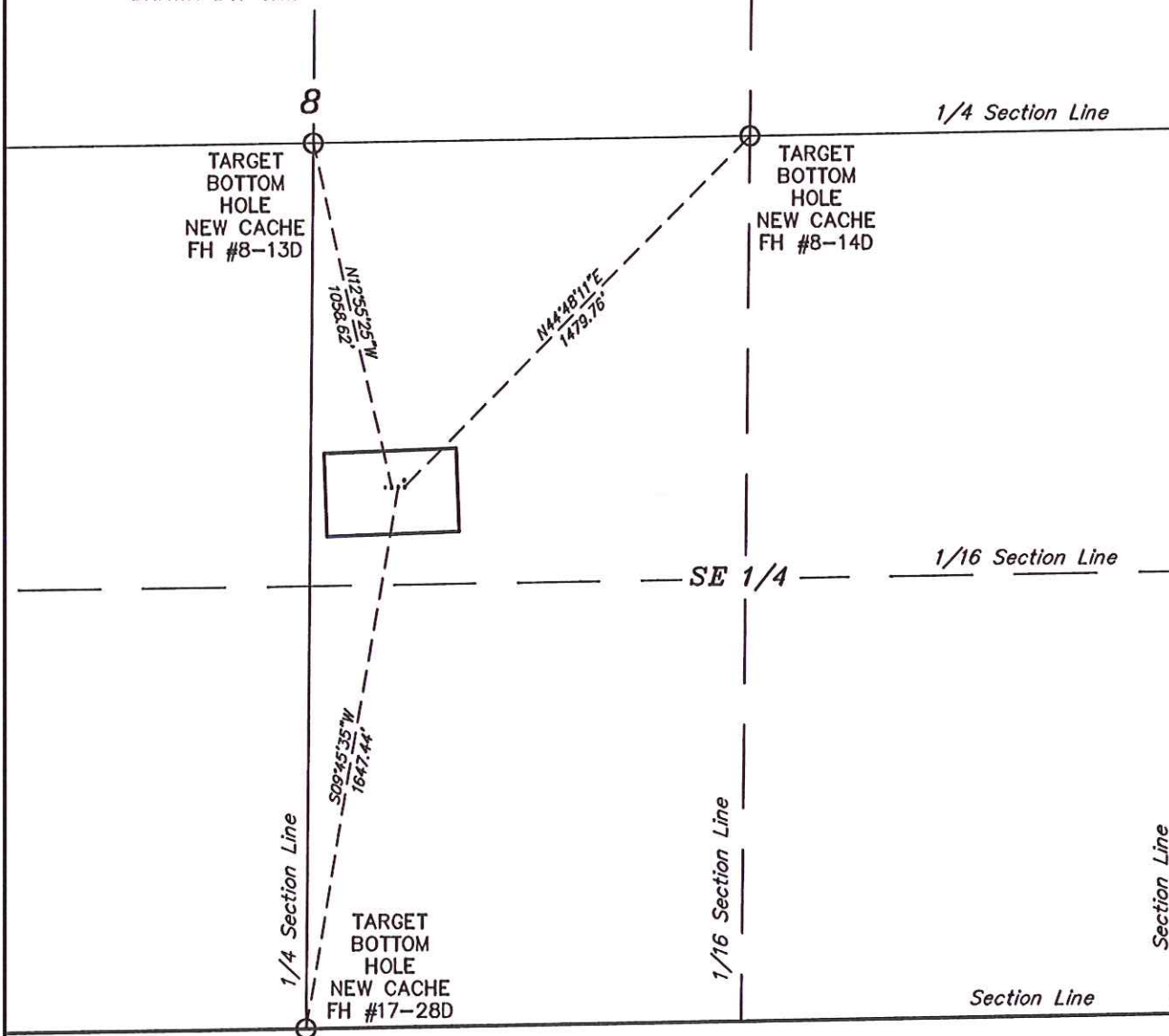
NW 1/4 SE 1/4



SCALE

DATE: 10-24-12

DRAWN BY: J.W.



UINTAH ENGINEERING & LAND SURVEYING

85 So. 200 East * Vernal, Utah 84078 * (435) 789-1017