

GREAT WESTERN OIL & GAS COMPANY
NEW CACHE FH #8-14D, #17-28D & #8-13D
LOCATED IN WELD COUNTY, COLORADO
SECTION 8, T6N, R63W, 6th P.M.

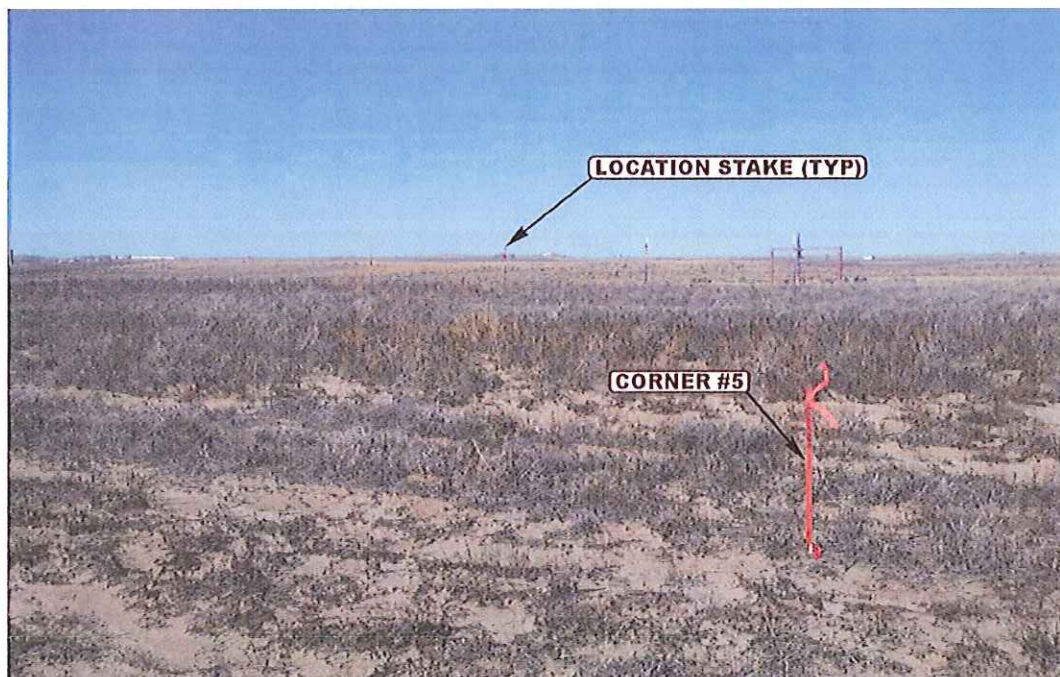


PHOTO: VIEW FROM CORNER #5 TO LOCATION STAKES

CAMERA ANGLE: NORTHERLY



PHOTO: VIEW FROM BEGINNING OF EXISTING ACCESS

CAMERA ANGLE: EASTERLY



Uintah Engineering & Land Surveying
85 South 200 East Vernal, Utah 84078
(435) 789-1017 * FAX (435) 789-1813

LOCATION PHOTOS

10 24 12
MONTH DAY YEAR

TAKEN BY: Z.B. DRAWN BY: B.D.H. REVISED: 00-00-00

PHOTO
P1

GREAT WESTERN OIL & GAS COMPANY
NEW CACHE FH #8-14D, #17-28D & #8-13D
LOCATED IN WELD COUNTY, COLORADO
SECTION 8, T6N, R63W, 6th P.M.

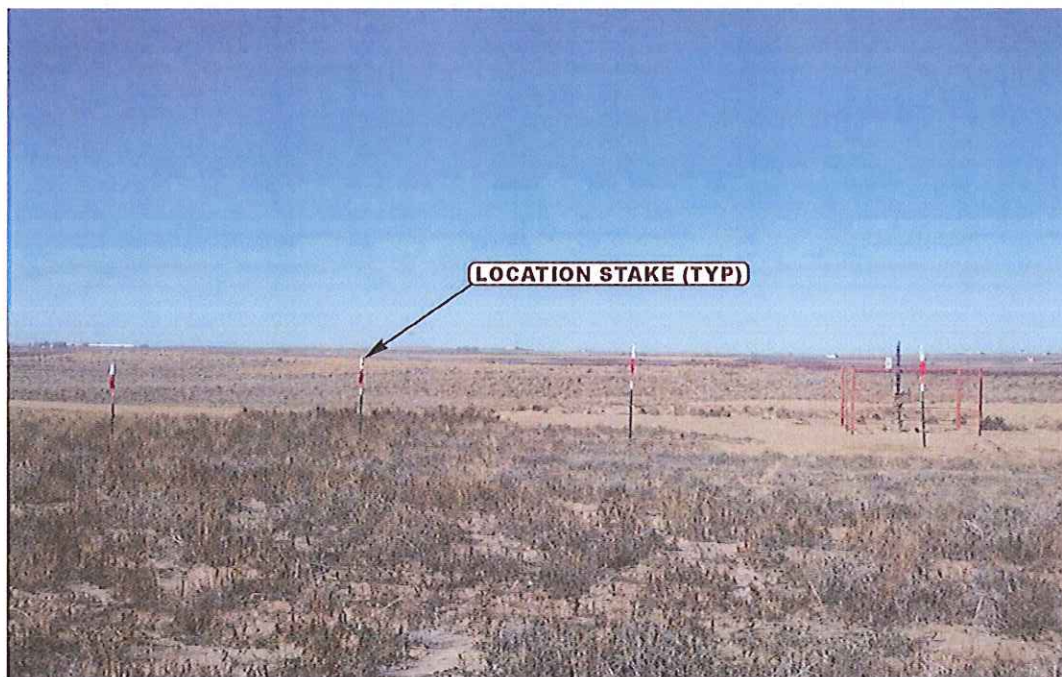


PHOTO: VIEW OF LOCATION STAKES

CAMERA ANGLE: NORTHERLY



PHOTO: VIEW OF LOCATION STAKES

CAMERA ANGLE: EASTERLY



- Since 1964 -

UELS

Uintah Engineering & Land Surveying
85 South 200 East Vernal, Utah 84078
(435) 789-1017 * FAX (435) 789-1813

LOCATION PHOTOS

10 **24** **12**
MONTH DAY YEAR

TAKEN BY: Z.B. DRAWN BY: B.D.H. REVISED: 00-00-00

PHOTO
P2

GREAT WESTERN OIL & GAS COMPANY
NEW CACHE FH #8-14D, #17-28D & #8-13D
LOCATED IN WELD COUNTY, COLORADO
SECTION 8, T6N, R63W, 6th P.M.

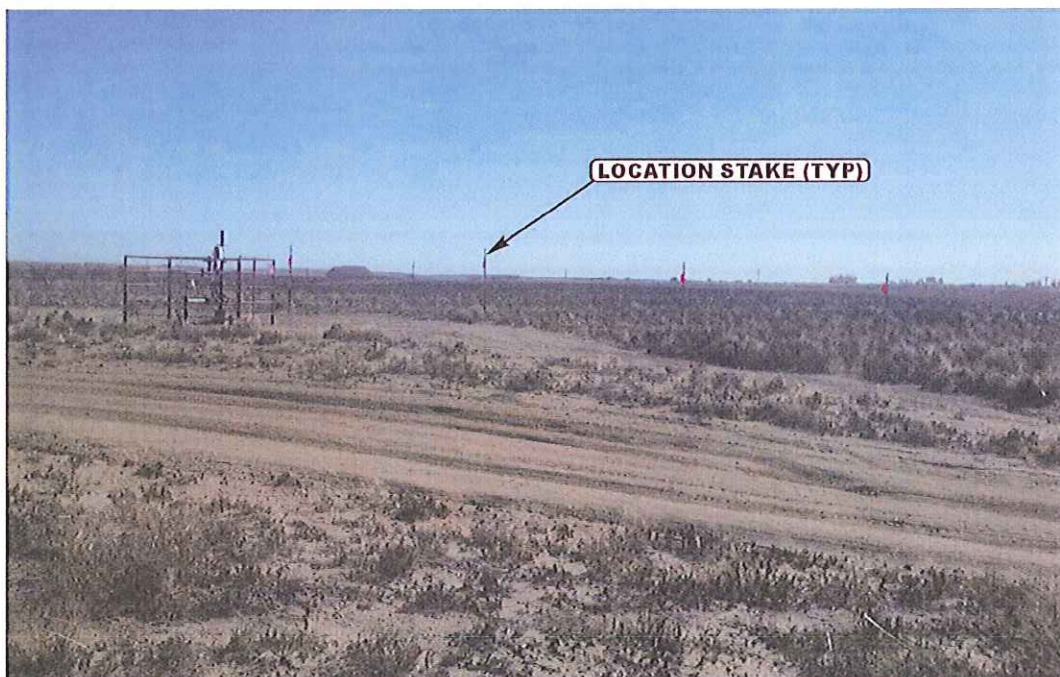


PHOTO: VIEW OF LOCATION STAKES

CAMERA ANGLE: SOUTHERLY

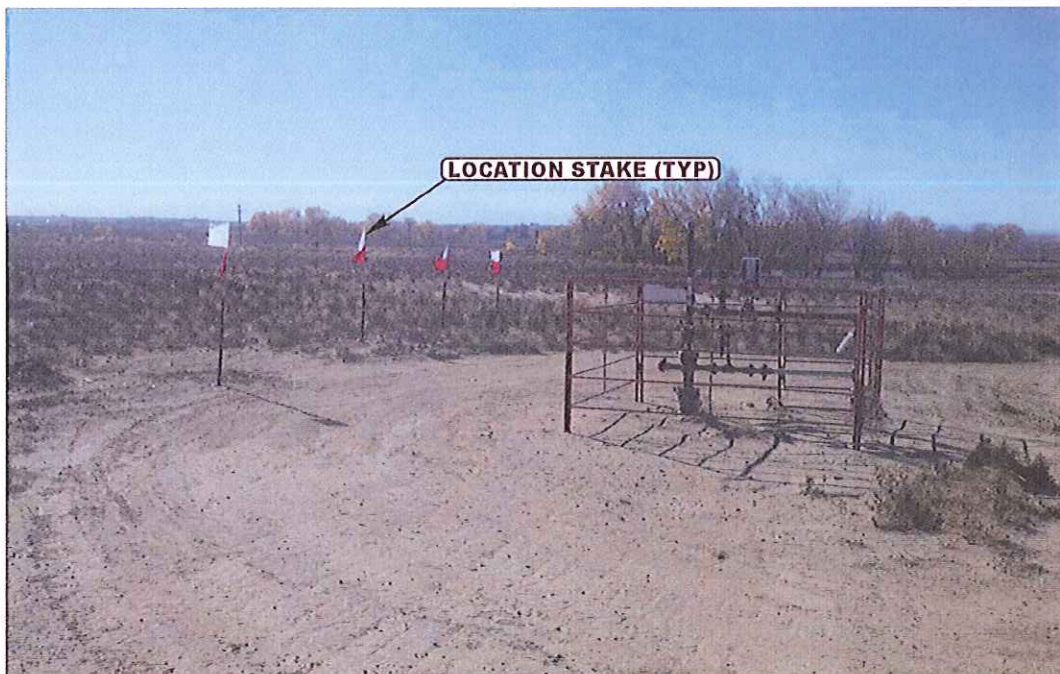


PHOTO: VIEW OF LOCATION STAKES

CAMERA ANGLE: WESTERLY



Uintah Engineering & Land Surveying
85 South 200 East Vernal, Utah 84078
(435) 789-1017 * FAX (435) 789-1813

LOCATION PHOTOS

10 24 12
MONTH DAY YEAR

TAKEN BY: Z.B. DRAWN BY: B.D.H. REVISED: 00-00-00

PHOTO
P3