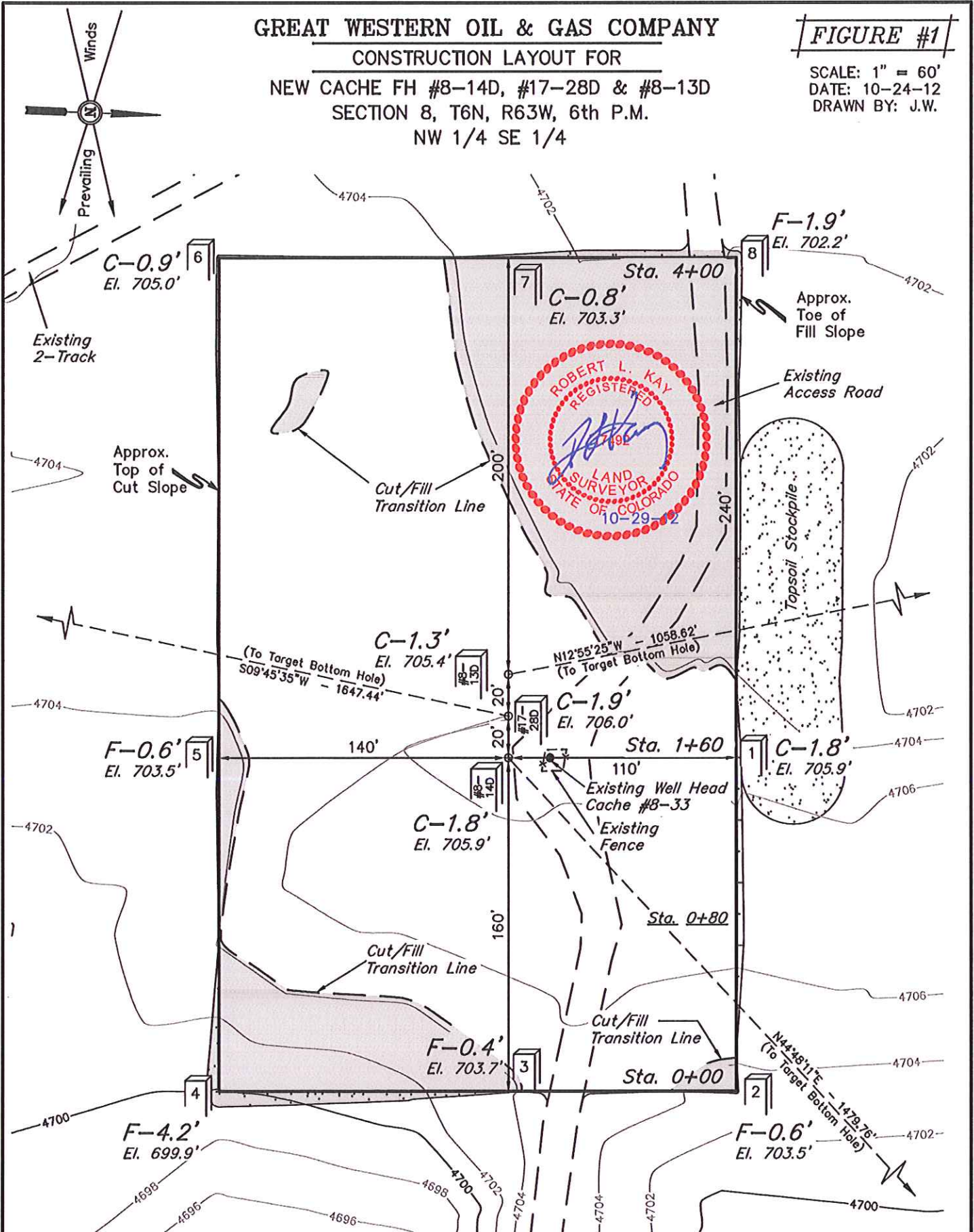


GREAT WESTERN OIL & GAS COMPANY
CONSTRUCTION LAYOUT FOR
NEW CACHE FH #8-14D, #17-28D & #8-13D
SECTION 8, T6N, R63W, 6th P.M.
NW 1/4 SE 1/4

FIGURE #1

SCALE: 1" = 60'
 DATE: 10-24-12
 DRAWN BY: J.W.



Elev. Ungraded Ground At FH #8-14D Loc. Stake = 4705.9'
 FINISHED GRADE ELEV. AT FH #8-14D LOC. STAKE = 4704.1'

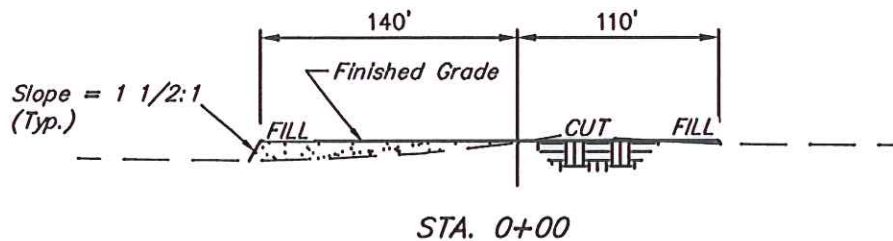
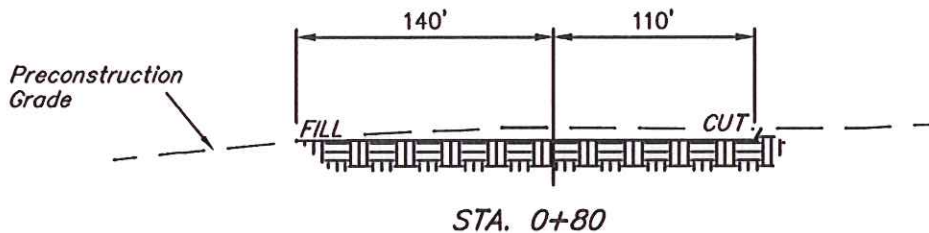
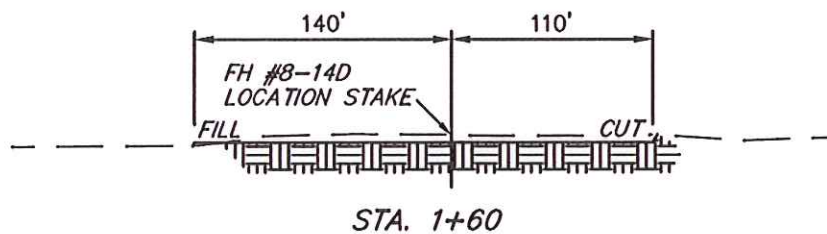
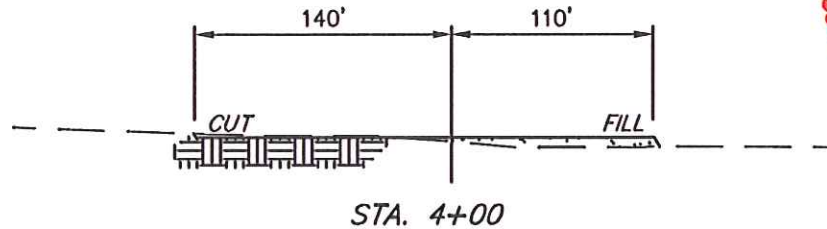
UINTAH ENGINEERING & LAND SURVEYING
 85 So. 200 East * Vernal, Utah 84078 * (435) 789-1017

GREAT WESTERN OIL & GAS COMPANY
CONSTRUCTION LAYOUT CROSS SECTIONS FOR
NEW CACHE FH #8-14D, #17-28D & #8-13D
SECTION 8, T6N, R63W, 6th P.M.
NW 1/4 SE 1/4

FIGURE #2

1" = 40'
 X-Section
 Scale
 1" = 100'

DATE: 10-24-12
 DRAWN BY: J.W.



NOTE:

Topsil should not be Stripped Below Finished Grade on Substructure Area.

APPROXIMATE ACREAGES
 WELL SITE DISTURBANCE = ± 2.564 ACRES

*** NOTE:**
 FILL QUANTITY INCLUDES 5% FOR COMPACTION

APPROXIMATE YARDAGES

(6") Topsoil Stripping	=	1,900 Cu. Yds.
Remaining Location	=	2,100 Cu. Yds.
TOTAL CUT	=	4,000 CU. YDS.
FILL	=	2,100 CU. YDS.

EXCESS MATERIAL	=	1,900 Cu. Yds.
Topsil	=	1,900 Cu. Yds.
EXCESS UNBALANCE	=	0 Cu. Yds.
(After Interim Rehabilitation)		

UINTAH ENGINEERING & LAND SURVEYING
 85 So. 200 East * Vernal, Utah 84078 * (435) 789-1017

GREAT WESTERN OIL & GAS COMPANY

TYPICAL RIG LAYOUT FOR

NEW CACHE FH #8-14D, #17-28D & #8-13D

SECTION 8, T6N, R63W, 6th P.M.

NW 1/4 SE 1/4

FIGURE #3

SCALE: 1" = 60'

DATE: 10-24-12

DRAWN BY: J.W.

