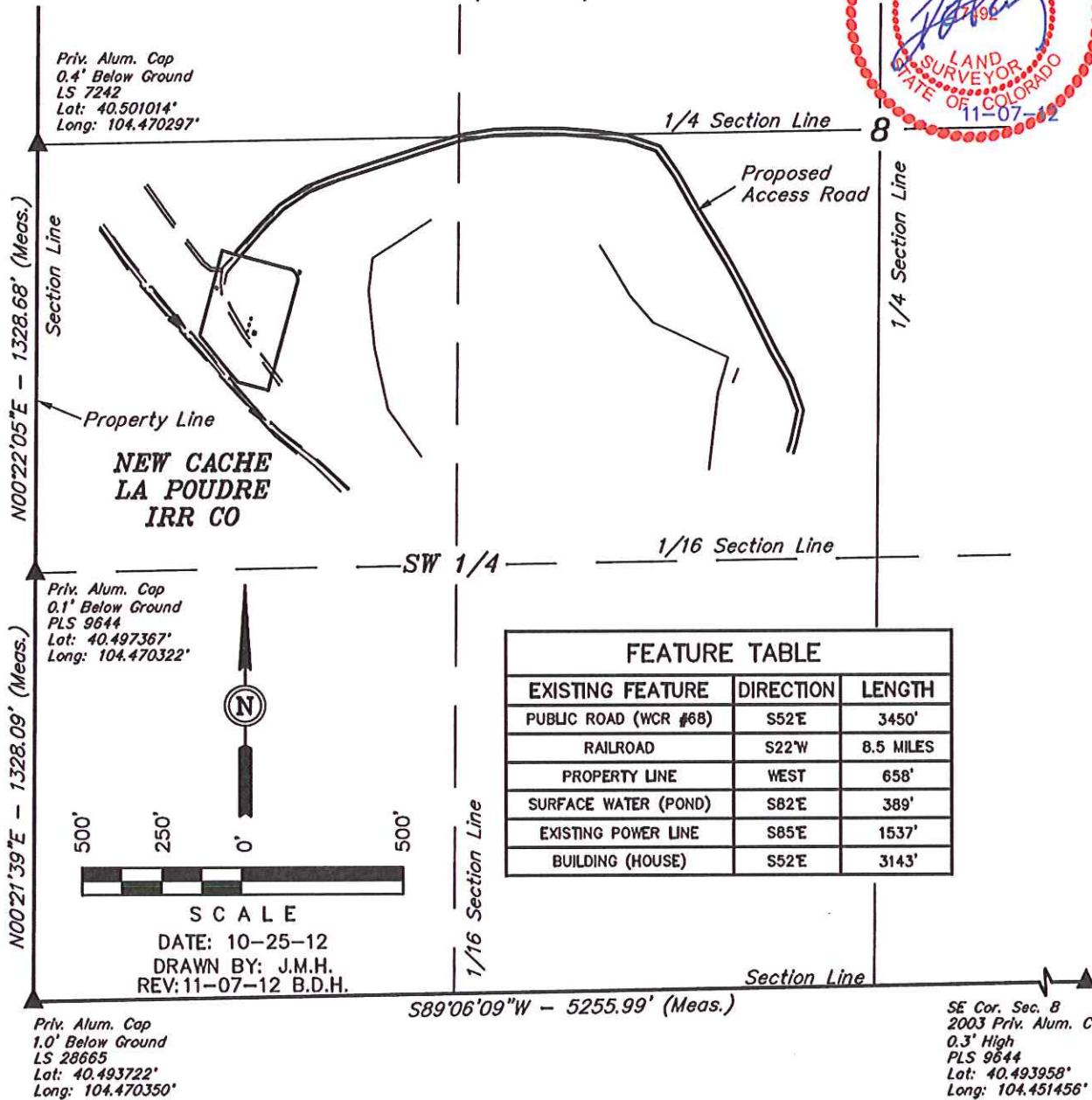


GREAT WESTERN OIL & GAS COMPANY

LOCATION DRAWING FOR

NEW CACHE FH #8-12D, #8-32D & #8-33D
SECTION 8, T6N, R63W, 6th P.M.
NW 1/4 SW 1/4

FIGURE #4



PLANT COMMUNITY

- ☐ DISTURBED GRASSLAND
- ☐ NATIVE GRASSLAND
- ☐ SHRUB LAND
- ☐ PLAINS RIPARIAN
- ☐ MOUNTAIN RIPARIAN
- ☐ FOREST LAND
- ☐ WETLANDS AQUATIC
- ☐ ALPINE
- ☐ OTHER (Describe): _____

CURRENT LAND USE

- CROP LAND: ☐ IRRIGATED ☐ DRY LAND ☐ IMPROVED PASTURE ☐ HAY MEADOW ☐ CRP
- NON-CROP LAND: ☐ RANGELAND ☐ TIMBER ☐ RECREATIONAL ☐ OTHER (Describe) _____
- SUBDIVDED: ☐ INDUSTRIAL ☐ COMMERCIAL ☐ RESIDENTIAL _____

FUTURE LAND USE

- CROP LAND: ☐ IRRIGATED ☐ DRY LAND ☐ IMPROVED PASTURE ☐ HAY MEADOW ☐ CRP
- NON-CROP LAND: ☐ RANGELAND ☐ TIMBER ☐ RECREATIONAL ☐ OTHER (Describe) _____
- SUBDIVDED: ☐ INDUSTRIAL ☐ COMMERCIAL ☐ RESIDENTIAL _____

UINTAH ENGINEERING & LAND SURVEYING
85 So. 200 East • Vernal, Utah 84078 • (435) 789-1017