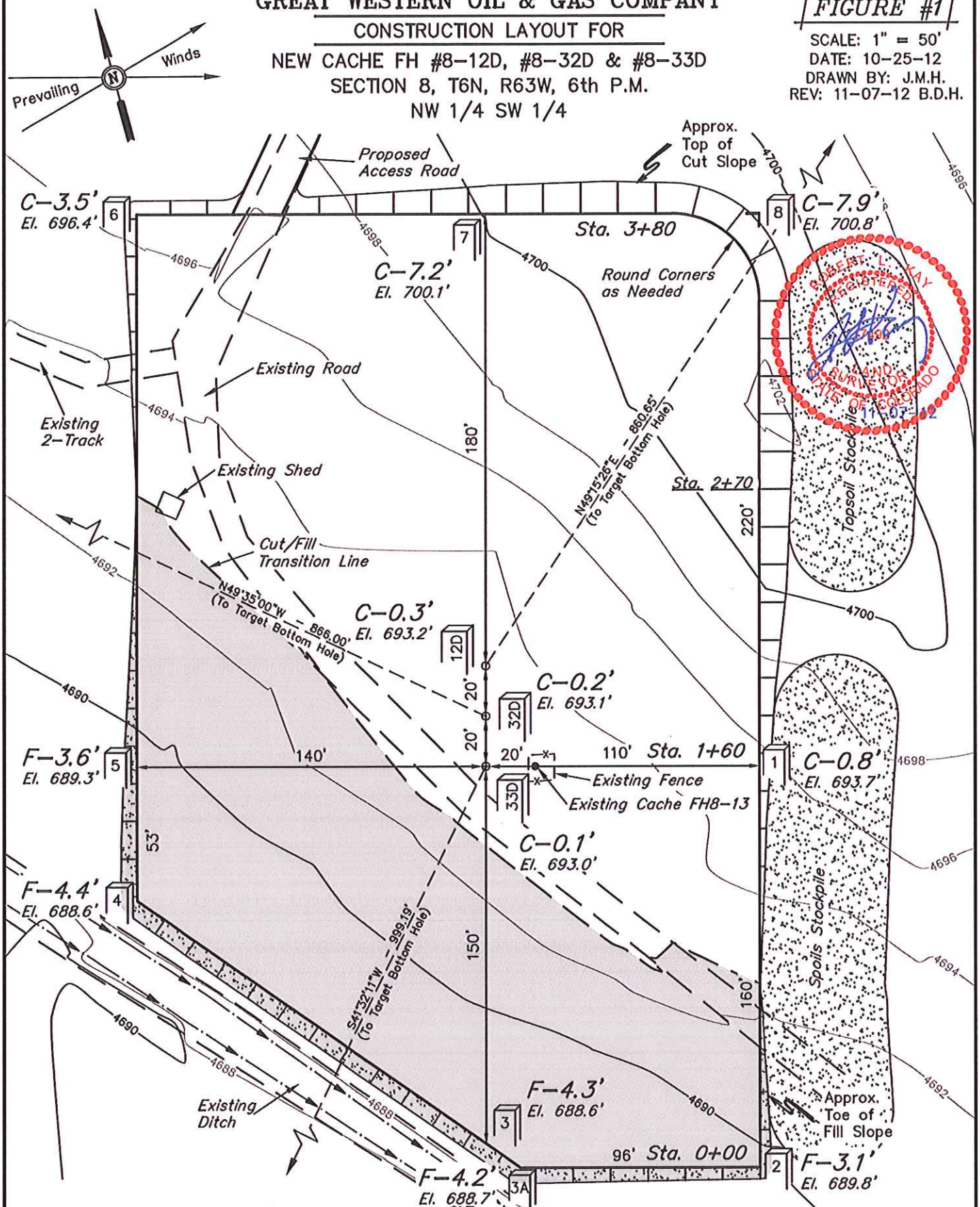


GREAT WESTERN OIL & GAS COMPANY
CONSTRUCTION LAYOUT FOR
NEW CACHE FH #8-12D, #8-32D & #8-33D
SECTION 8, T6N, R63W, 6th P.M.
NW 1/4 SW 1/4

FIGURE #1

SCALE: 1" = 50'
 DATE: 10-25-12
 DRAWN BY: J.M.H.
 REV: 11-07-12 B.D.H.



Elev. Ungraded Ground At NEW CACHE FH #8-33D Loc. Stake = 4693.0'
 FINISHED GRADE ELEV. AT NEW CACHE FH #8-33D LOC. STAKE = 4692.9'

UINTAH ENGINEERING & LAND SURVEYING
 85 So. 200 East * Vernal, Utah 84078 * (435) 789-1017

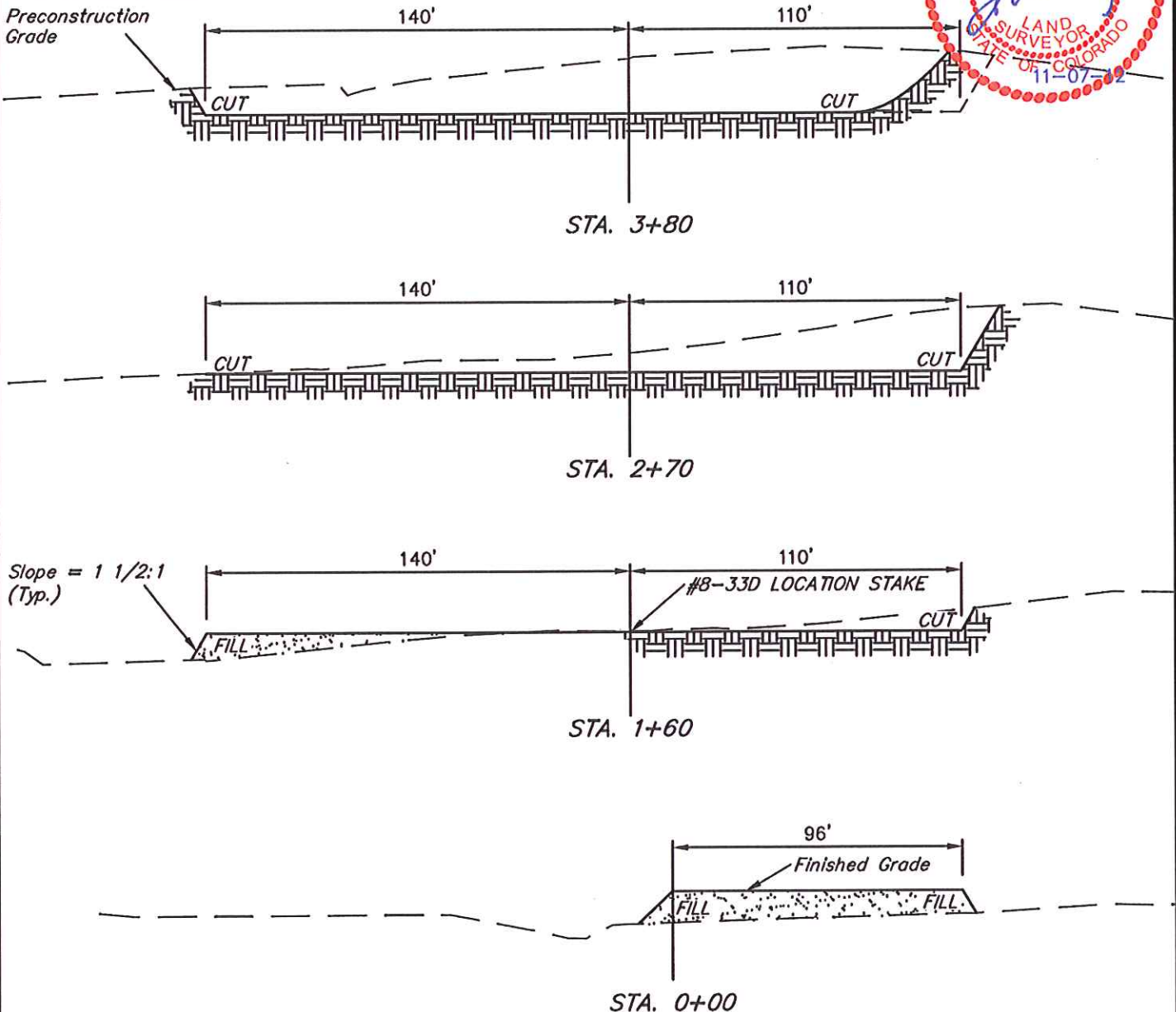
GREAT WESTERN OIL & GAS COMPANY
CONSTRUCTION LAYOUT CROSS SECTIONS FOR
NEW CACHE FH #8-12D, #8-32D & #8-33D
SECTION 8, T6N, R63W, 6th P.M.
NW 1/4 SW 1/4

FIGURE #2

X-Section
Scale
1" = 50'

DATE: 10-25-12
 DRAWN BY: J.M.H.
 REV: 11-07-12 B.D.H.

Preconstruction
Grade



NOTE:

Topsoll should not be
 Stripped Below Finished
 Grade on Substructure Area.

APPROXIMATE ACREAGES
 WELL SITE DISTURBANCE = ± 2.537 ACRES
 ACCESS ROAD DISTURBANCE = ± 1.718 ACRES
 TOTAL = ± 4.255 ACRES

*** NOTE:**
 FILL QUANTITY INCLUDES
 5% FOR COMPACTION

APPROXIMATE YARDAGES

(6") Topsoll Stripping = 1,760 Cu. Yds.
 Remaining Location = 6,320 Cu. Yds.
TOTAL CUT = 8,080 CU. YDS.
FILL = 3,610 CU. YDS.

EXCESS MATERIAL = 4,470 Cu. Yds.
 Topsoll = 1,760 Cu. Yds.

EXCESS UNBALANCE = 2,710 Cu. Yds.
 (After Interim Rehabilitation)

UINTAH ENGINEERING & LAND SURVEYING
 85 So. 200 East * Vernal, Utah 84078 * (435) 789-1017

GREAT WESTERN OIL & GAS COMPANY

TYPICAL RIG LAYOUT FOR

NEW CACHE FH #8-12D, #8-32D & #8-33D

SECTION 8, T6N, R63W, 6th P.M.

NW 1/4 SW 1/4

FIGURE #3

SCALE: 1" = 50'

DATE: 10-25-12

DRAWN BY: J.M.H.

REV: 11-07-12 B.D.H.

