

Location Drawing

Nearest:
 Building: 855' southwest
 Property Line: 778' south
 Above Ground Utility: 747' south
 Public Road: 766' south
 Railroad: 16,095' southeast

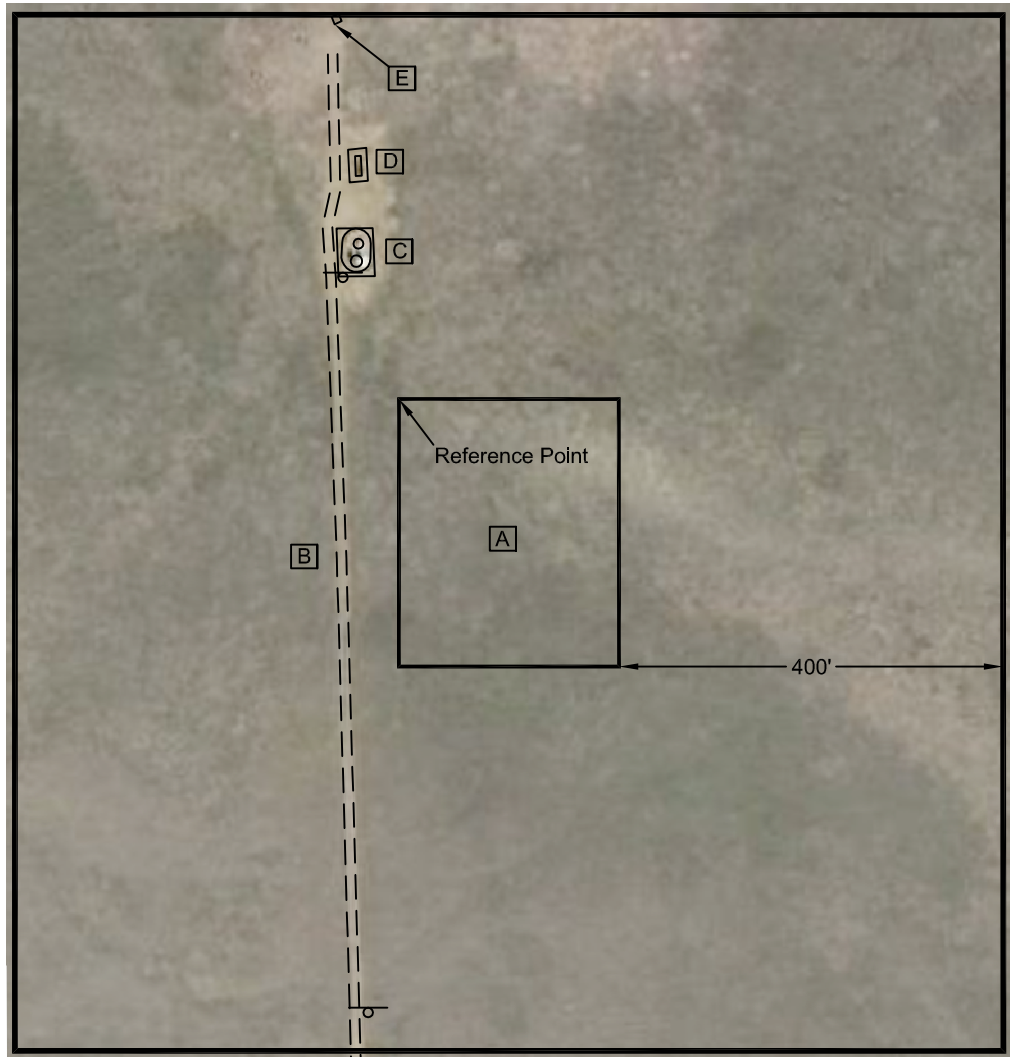
Existing Well Data:

Mathews B Unit 1
 Latitude: N 40.04722°
 Longitude: W 104.74020°
 FSL: 1174'
 FEL: 1470'
 ELEV: 5098'
 PDOP: 2.0

Reference Point Data:

Northwest corner of the
 Area of Disturbance
 (proposed facility pads)
 Latitude: N 40.04613°
 Longitude: W 104.73998°
 FSL: 778'
 FEL: 1325'
 ELEV: 1407'
 PDOP: 1.9

Field observations taken
 on 9/6/12 by operator
 John Rice.

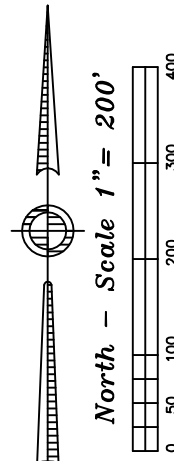


Legend:

⊗ - gas/utility sign

**Distances listed below
 are measured from the
 Northwest corner of the
 Area of Disturbance (proposed facility pads)**

- A** Northwest corner of the Area of Disturbance (proposed facility pads)
- B** access 61' west
- C** fenced in tanks 130' northwest
- D** fenced in separator 230' northwest
- E** existing Mathews B Unit 1, 401' northwest



**Mathews S $\frac{1}{2}$ SE
 Proposed Facility Drawing**

Improvements extending
 400' from disturbance

Township 1 North, Range 66 West,
 Section 14: S $\frac{1}{2}$ SE $\frac{1}{4}$
 Weld County, Colorado

December 14, 2012

JR Land Surveying, LLC
 8114 Northstar Drive
 Windsor, Colorado 80528
 P. 970-576-4641