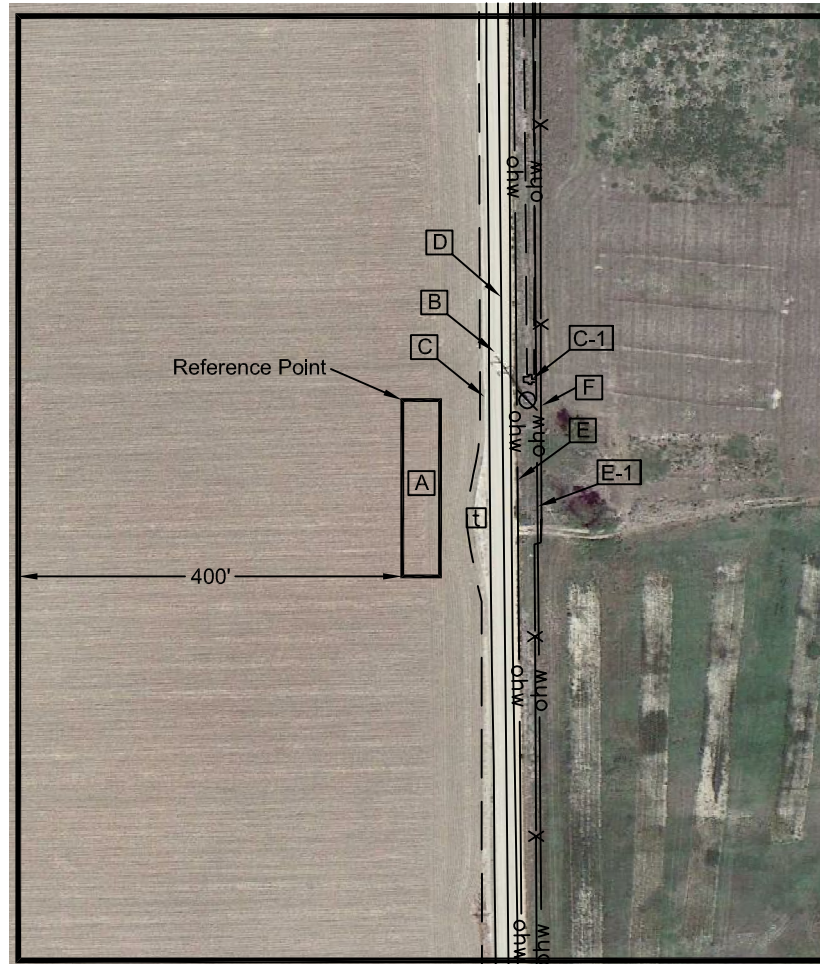


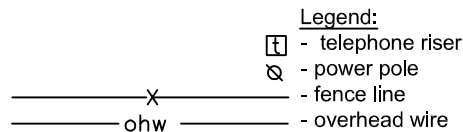
# Location Drawing

Nearest:  
 Building: 587' northwest  
 Property Line: 104' east  
 Above Ground Utility: 119' east  
 Public Road: 91' east  
 Railroad: 10,897' west



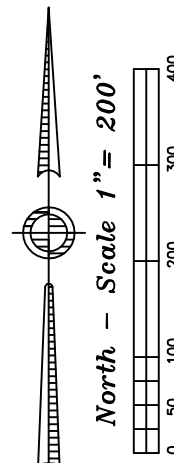
**Reference Point Data:**  
 Northwest corner of the  
 Area of Disturbance  
 (proposed facility pads)  
 Latitude: N 40.26063°  
 Longitude: W 105.03697°  
 FNL: 519'  
 FEL: 104'  
 ELEV: 5085'  
 PDOP: 1.9

Field observations taken  
 on 11/26/12 by operator  
 John Rice.



**Distances listed below  
 are measured from the  
 Northwest corner of the Area of Disturbance  
 (proposed facility pads)**

- A** Northwest corner of the Area of Disturbance  
 (proposed facility pads)
- B** Weld County Road 3, 91' east
- C** ditch 81' east
- C-1** concrete irrigation structure/ditch  
 128' northeast
- D** property line 104' east
- E** overhead power line 119' east
- E-1** overhead power line 140' east
- F** fence 145' east



**Drieth Breakneck NENE  
 Proposed Facility Drawing**

Improvements extending  
 400' from disturbance

Township 3 North, Range 68 West,  
 Section 6: NE¼ NE¼  
 Weld County, Colorado

December 15, 2012

**JR Land Surveying, LLC**  
 8114 Northstar Drive  
 Windsor, Colorado 80528  
 P. 970-576-4641