

WELL LOCATION PLAT

T9N, R60W, 6th P.M.

NOBLE ENGERY, INC.

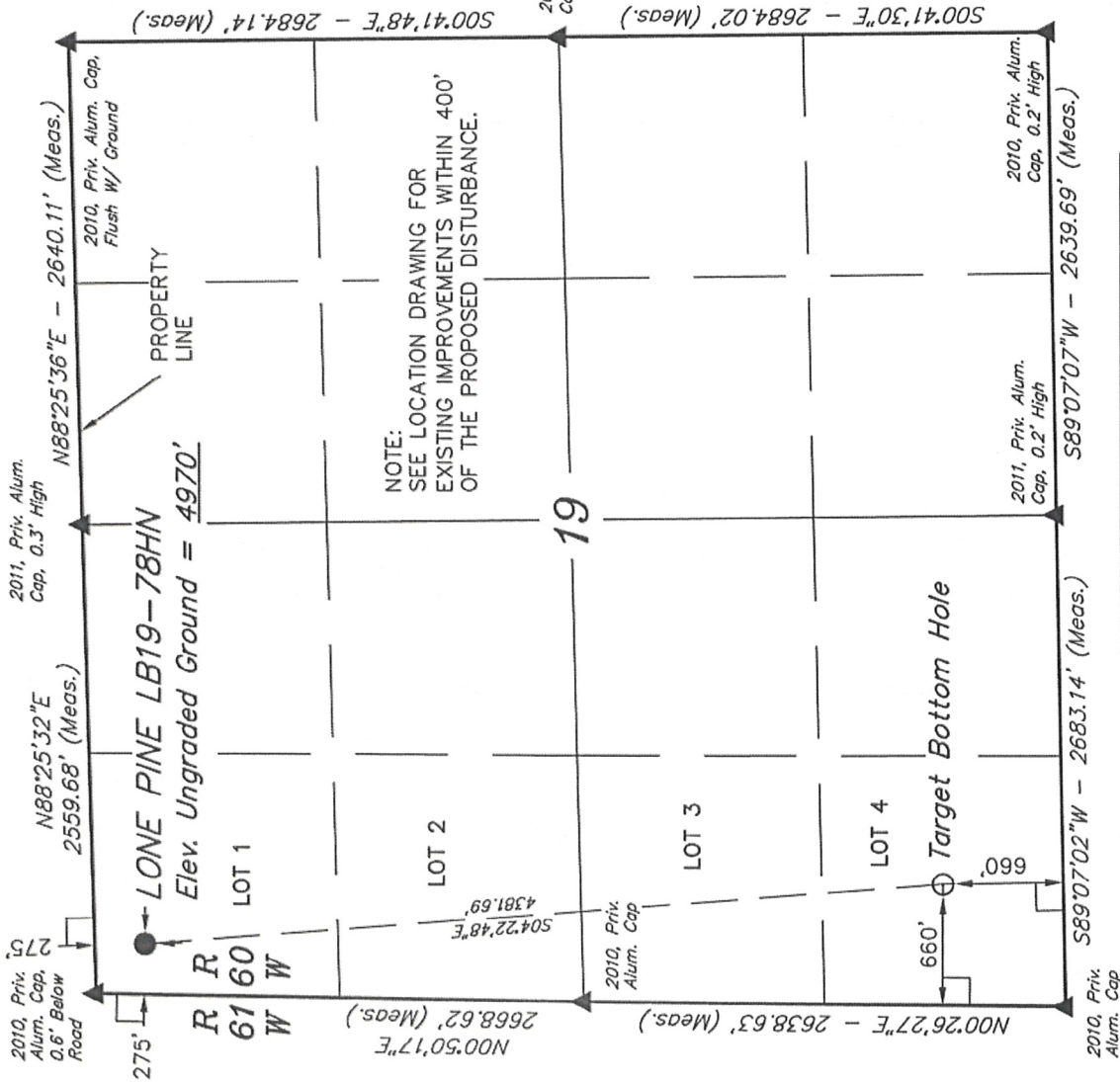
Well location, LONE PINE LB19-78HN, located as shown in LOT 1 of Section 19, T9N, R60W, 6th P.M., Weld County, Colorado.

BASIS OF ELEVATION

SPOT ELEVATION LOCATED AT THE NORTHEAST CORNER OF SECTION 2, T9N, R61W, 6th P.M., TAKEN FROM THE GROVER SOUTH, QUADRANGLE, COLORADO, WELD COUNTY, 7.5 MINUTE QUAD (TOPOGRAPHICAL MAP) PUBLISHED BY THE UNITED STATES DEPARTMENT OF THE INTERIOR, GEOLOGICAL SURVEY. SAID ELEVATION IS MARKED AS BEING 5043 FEET.

BASIS OF BEARINGS

BASIS OF BEARINGS IS A G.P.S. OBSERVATION.



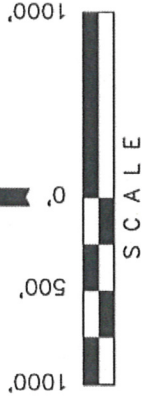
FEATURE TABLE		
EXISTING FEATURE	DIRECTION	LENGTH
PROPERTY LINE	NORTH	275'

LEGEND:

- = 90° SYMBOL
- = PROPOSED WELL HEAD.
- ▲ = SECTION CORNERS LOCATED.

NAD 83 (TARGET BOTTOM HOLE)	NAD 83 (SURFACE LOCATION)
LATITUDE = 40°43'44.67" (40.729075)	LATITUDE = 40°44'27.83" (40.741084)
LONGITUDE = 104°08'36.96" (104.143600)	LONGITUDE = 104°08'41.29" (104.144803)

PDOP = 2.0



CERTIFICATE

THIS IS TO CERTIFY THAT THE ABOVE PLAT WAS PREPARED FROM FIELD NOTES OF ACTUAL SURVEYS MADE BY ME OR UNDER MY SUPERVISION AND THAT THE SAME ARE TRUE AND CORRECT TO THE BEST OF MY KNOWLEDGE AND BELIEF.

REGISTERED LAND SURVEYOR
REGISTRATION NO. 1617499
STATE OF COLORADO 08-10-12

UNTAN ENGINEERING & LAND SURVEYING
85 SOUTH 200 EAST - VERNAL, UTAH 84078
(435) 789-1017

SCALE 1" = 1000'	DATE SURVEYED: 06-21-12	DATE DRAWN: 07-25-12
PARTY JEREMY HARRIS, C.M. J.M.H.	REFERENCES G.L.O. PLAT	
WEATHER HOT	FILE	NOBLE ENERGY, INC.

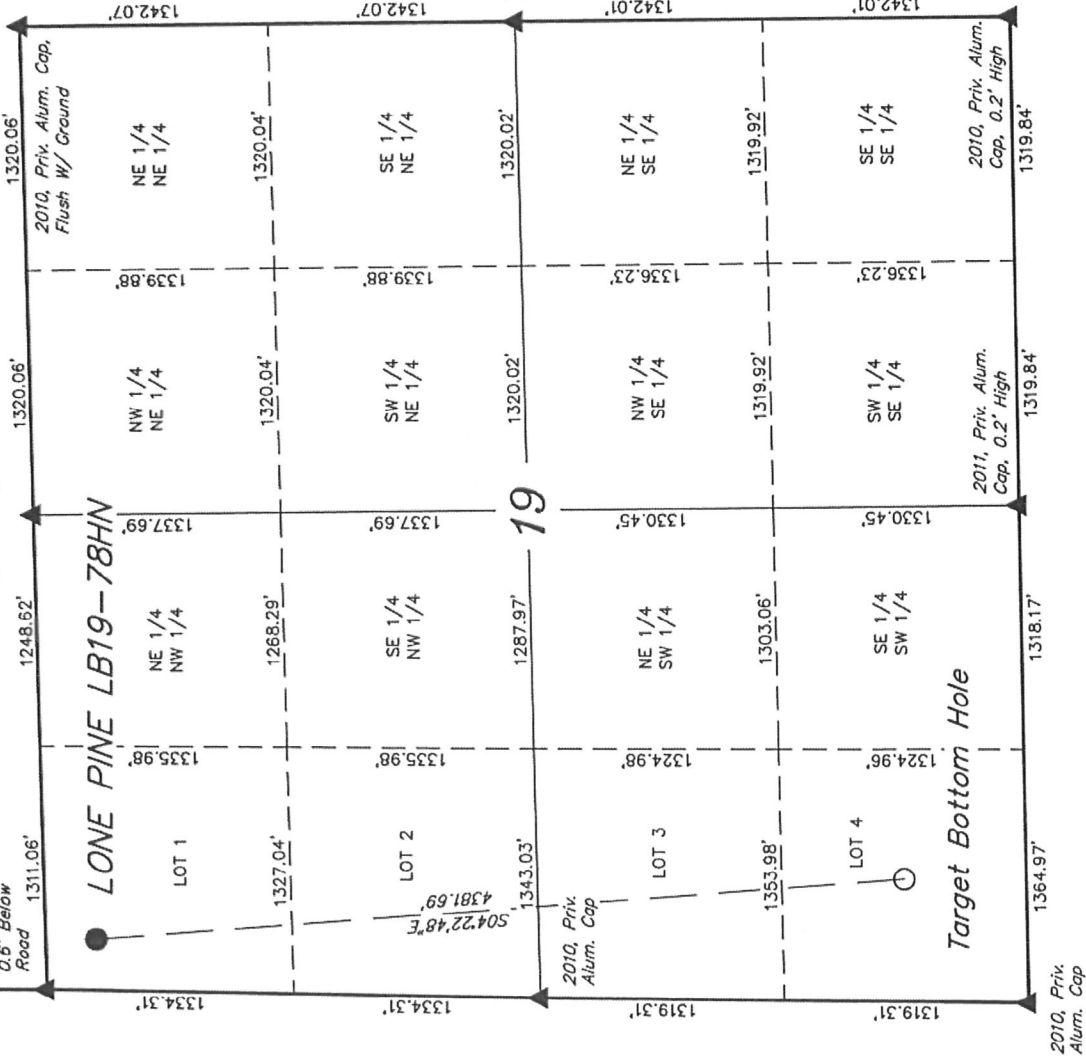
NOBLE ENGERY, INC.

Well location, LONE PINE LB19-78HN, located as shown in LOT 1 of Section 19, T9N, R60W, 6th P.M., Weld County, Colorado.

SITE SKETCH T9N, R60W, 6th P.M.

2011, Priv. Alum.
Cap. 0.3' High

2010, Priv.
Alum. Cap.
0.6' Below
Road



LEGEND:

- ▲ = SECTION CORNERS LOCATED.
- = PROPOSED WELL HEAD.
- = TARGET BOTTOM HOLE

REVISED: 09-11-12

UNTAH ENGINEERING & LAND SURVEYING	
85 SOUTH 200 EAST - VERNAL, UTAH 84078	
(435) 789-1017	
SCALE 1" = 1000'	DATE SURVEYED: 06-21-12
PARTY JEREMY HARRIS C.M. J.M.H.	DATE DRAWN: 07-25-12
WEATHER HOT	REFERENCES G.L.O. PLAT
FILE NOBLE ENERGY, INC.	

NO WELLS WITHIN SECTION