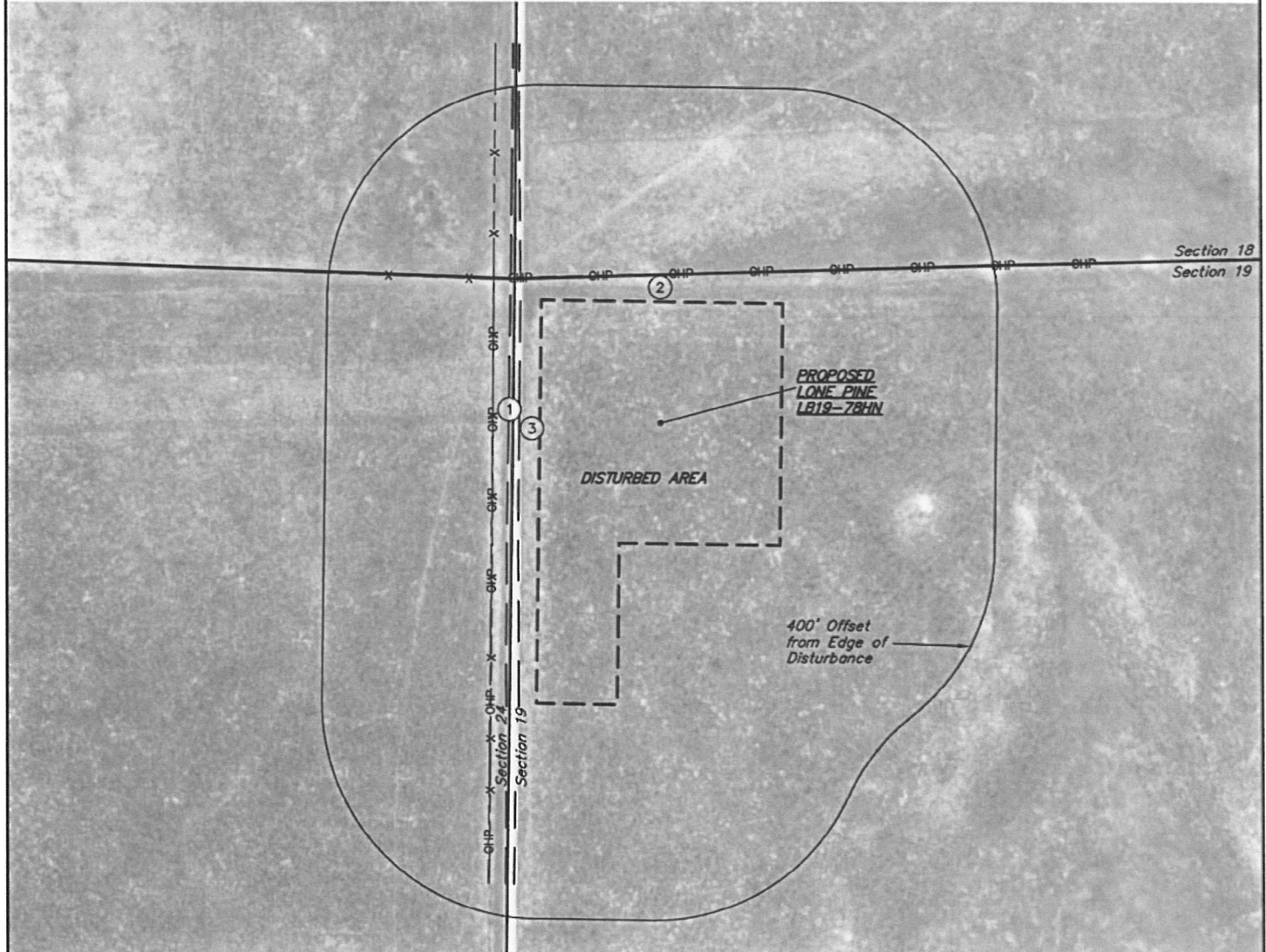


NOBLE ENERGY, INC.

LOCATION DRAWING

LONE PINE LB19-78HN  
SECTION 19, T9N, R60W, 6th P.M.

DATE: 07-23-12  
DRAWN BY: J.M.H.  
REV: 09-11-12



NOTE:

DIRECTION AND DISTANCE TO IMPROVEMENTS AND NEAREST FEATURES ARE FROM PROPOSED LONE PINE LB19-78HN.

IMPROVEMENTS:

- ① FENCE 313' W, 410' NW
- ② POWER LINE 277' N, 313' W
- ③ ROAD 263' W

NEAREST FEATURE: BUILDING 3675' S, PUBLIC ROAD  
263' W (CR 97), ABOVE GROUND UTILITY 313' W,  
RAILROAD 5280' +, PROPERTY LINE 275' N

UINTAH ENGINEERING & LAND SURVEYING  
85 So. 200 East \* Vernal, Utah 84078 \* (435) 789-1017