

GREAT WESTERN OIL & GAS COMPANY

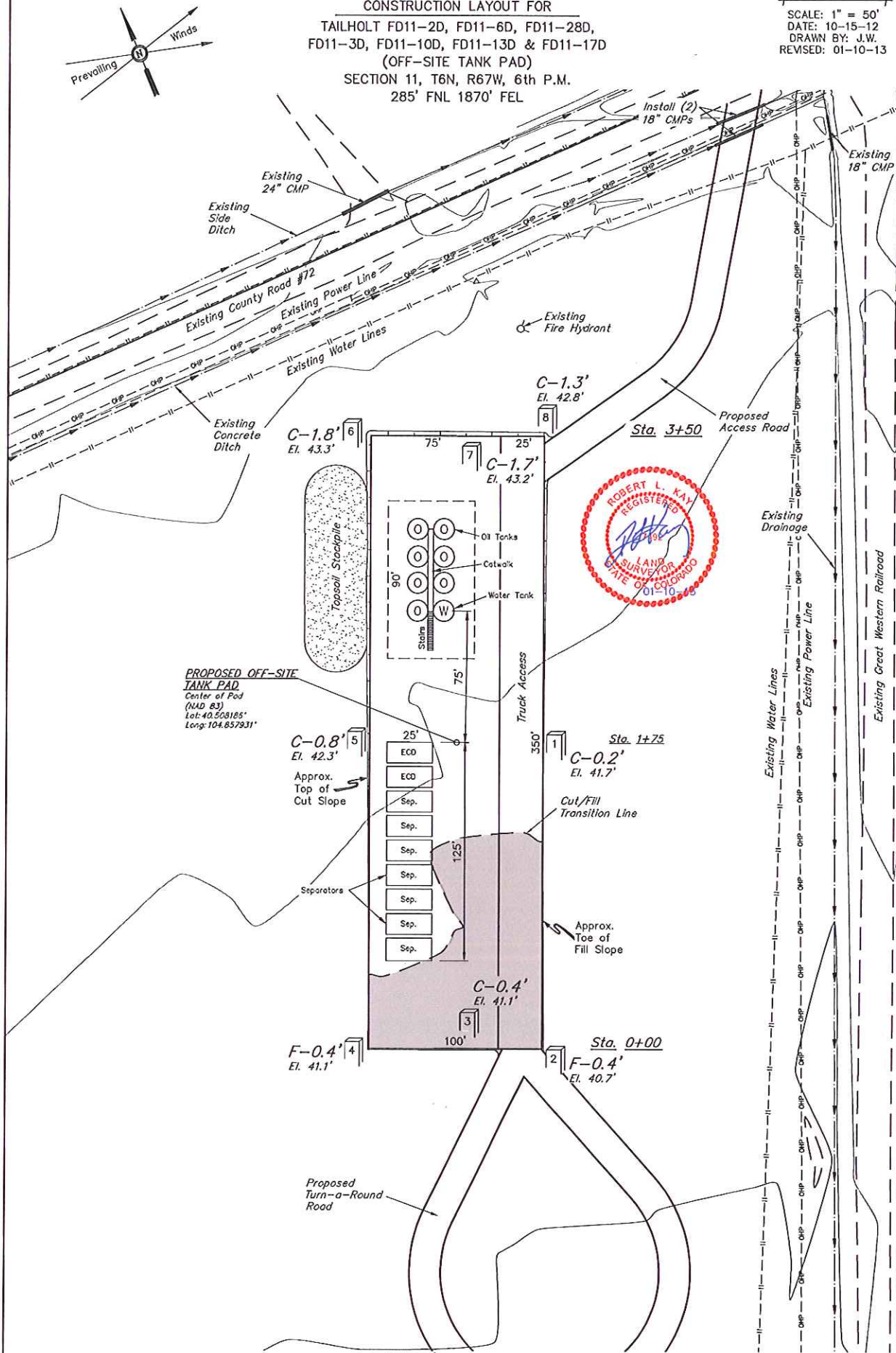
CONSTRUCTION LAYOUT FOR

TAILHOLT FD11-2D, FD11-6D, FD11-28D,
FD11-3D, FD11-10D, FD11-13D & FD11-17D
(OFF-SITE TANK PAD)

SECTION 11, T6N, R67W, 6th P.M.
285' FNL 1870' FEL

FIGURE #1

SCALE: 1" = 50'
DATE: 10-15-12
DRAWN BY: J.W.
REVISED: 01-10-13



Elev. Ungraded Ground At Center of Off-Site Tank Pad Stake = 4841.8'
FINISHED GRADE ELEV. AT CENTER OF OFF-SITE TANK PAD STAKE = 4841.5'

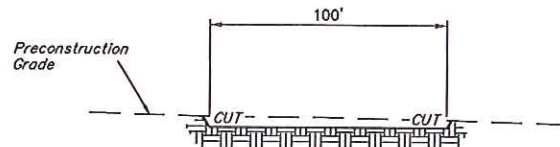
UINTAH ENGINEERING & LAND SURVEYING
85 So. 200 East • Vernal, Utah 84078 • (435) 789-1017

X-Section
Scale
1" = 50'

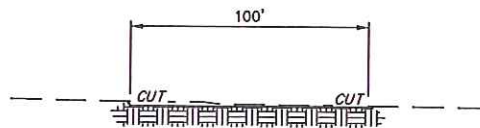
DATE: 10-15-12
DRAWN BY: J.W.
REVISED: 01-10-13

GREAT WESTERN OIL & GAS COMPANY
CONSTRUCTION LAYOUT CROSS SECTIONS FOR
TAILHOLT FD11-2D, FD11-6D, FD11-28D,
FD11-3D, FD11-10D, FD11-13D & FD11-17D
(OFF-SITE TANK PAD)
SECTION 11, T6N, R67W, 6th P.M.
285' FNL 1870' FEL

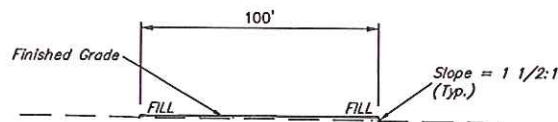
FIGURE #2



STA. 3+50



STA. 1+75



STA. 0+00

NOTE:

Topsoil should not be
Stripped Below Finished
Grade on Substructure Area.

* NOTE:
FILL QUANTITY INCLUDES
5% FOR COMPACTION

APPROXIMATE YARDAGES

(6") Topsoil Stripping = 670 Cu. Yds.
Remaining Location = 360 Cu. Yds.
TOTAL CUT = 1,030 CU. YDS.
FILL = 360 CU. YDS.

EXCESS MATERIAL = 670 Cu. Yds.
Topsoil = 670 Cu. Yds.
EXCESS UNBALANCE = 0 Cu. Yds.
(After Interim Rehabilitation)

APPROXIMATE ACREAGES

WELL SITE DISTURBANCE = ± 0.919 ACRES
ACCESS ROAD DISTURBANCE = ± 0.535 ACRES
TOTAL = ± 1.454 ACRES

UINTAH ENGINEERING & LAND SURVEYING
85 So. 200 East • Vernal, Utah 84078 • (435) 782-1017

GREAT WESTERN OIL & GAS COMPANY

LOCATION DRAWING DETAIL FOR

TAILHOLT FD11-2D, FD11-6D, FD11-28D,
FD11-3D, FD11-10D, FD11-13D & FD11-17D
(OFF-SITE TANK PAD)

SECTION 11, T6N, R67W, 6th P.M.
285' FNL 1870' FEL

FIGURE #3A

SCALE: 1" = 200'
DATE: 01-10-13
DRAWN BY: J.W.



LINE TABLE		
LINE	DIRECTION	LENGTH
L1	S68°E	246'
L2	S68°E	238'
L3	S68°E	191'
L4	S67°E	187'
L5	S67°E	148'
L6	S64°E	131'
L7	S66°E	297'
L8	S67°E	289'
L9	S66°E	243'
L10	S68°E	218'

LINE TABLE		
LINE	DIRECTION	LENGTH
L11	S67°E	198'
L12	S64°E	188'
L13	N59°E	491'
L14	N70°E	324'
L15	S24°W	59'
L16	N32°E	239'
L17	NORTH	119'
L18	NORTH	103'
L19	NORTH	101'
L20	NORTH	75'

LINE TABLE		
LINE	DIRECTION	LENGTH
L21	NORTH	69'
L22	NORTH	56'
L23	NORTH	239'
L24	NORTH	252'
L25	NORTH	258'
L26	NORTH	284'
L27	NORTH	285'
L28	NORTH	302'

