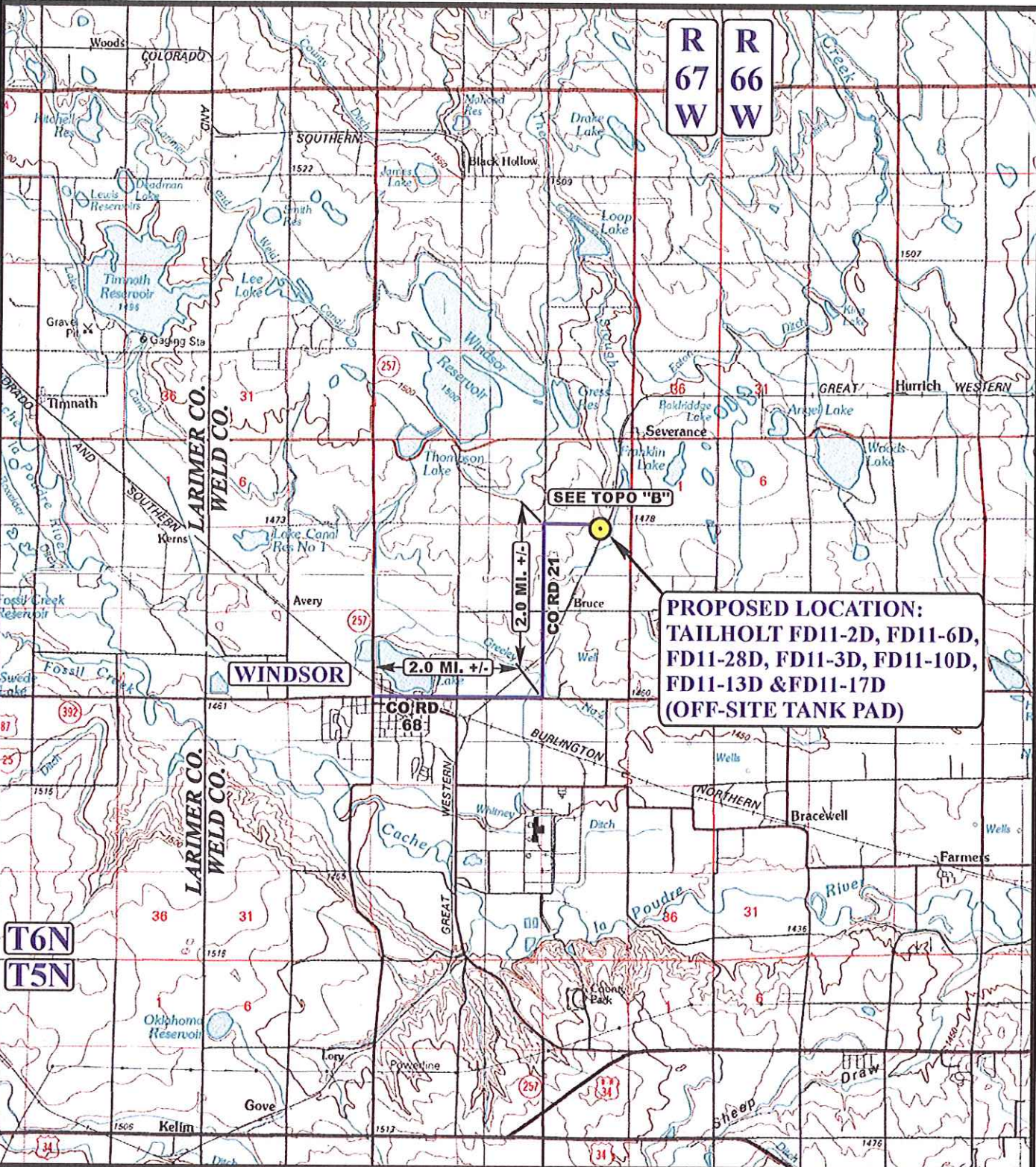


R
67
W

R
66
W

**PROPOSED LOCATION:
TAILHOLT FD11-2D, FD11-6D,
FD11-28D, FD11-3D, FD11-10D,
FD11-13D & FD11-17D
(OFF-SITE TANK PAD)**



LEGEND:

PROPOSED LOCATION



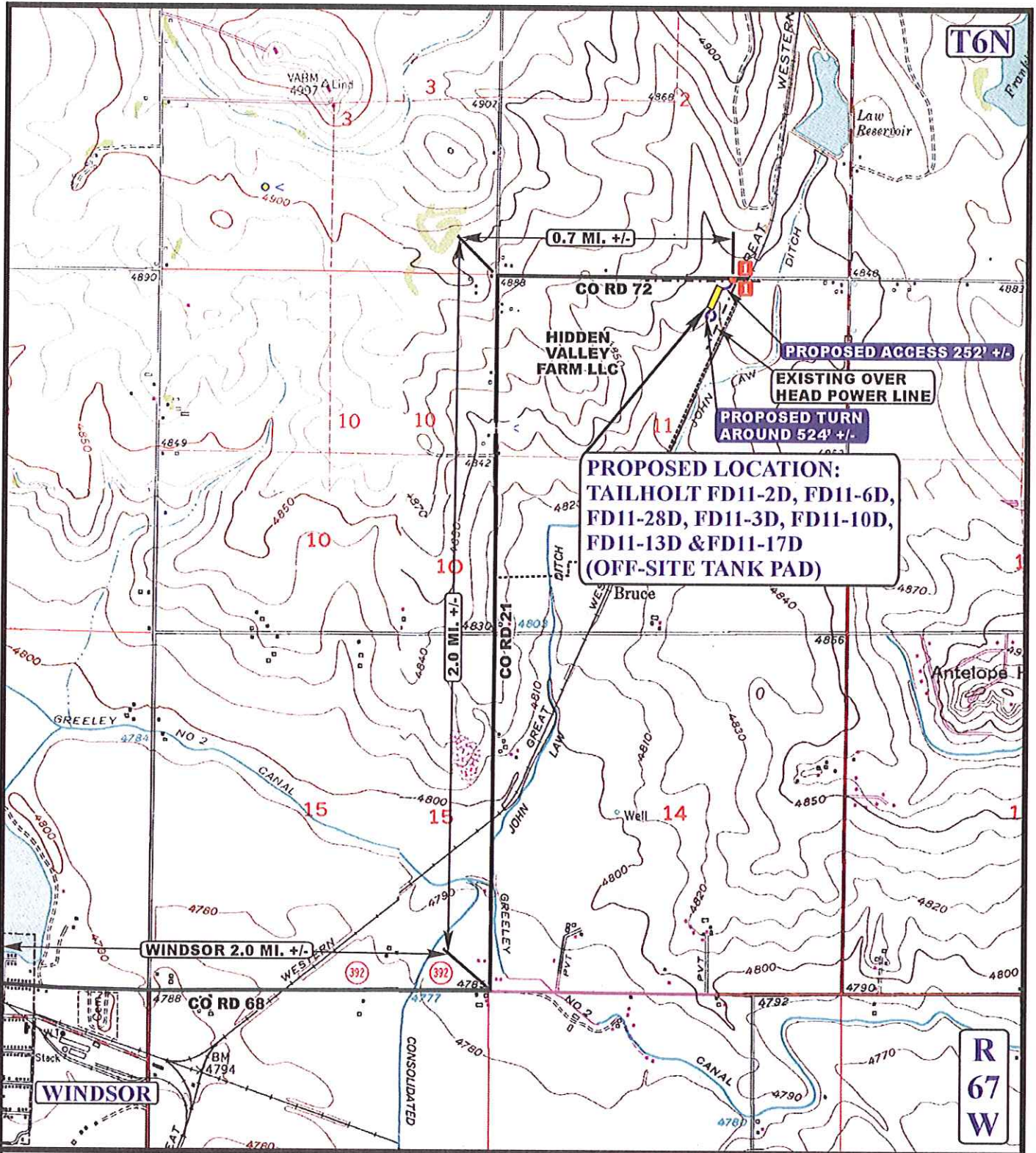
GREAT WESTERN OIL & GAS COMPANY
TAILHOLT FD11-2D, FD11-6D, FD11-28D, FD11-3D,
FD11-10D, FD11-13D & FD11-17D (OFF-SITE TANK PAD)
SECTION 11, T6N, R67W, 6th P.M.
285' FNL 1870' FEL

U&L S Uintah Engineering & Land Surveying
85 South 200 East Vernal, Utah 84078
(435) 789-1017 * FAX (435) 789-1813

ACCESS ROAD MAP

10	16	12
MONTH	DAY	YEAR

SCALE: 1:100,000 DRAWN BY: A.T. REV: 01-10-13 J.L.H. **A TOPO**



LEGEND:

- EXISTING ROAD
- - - PROPOSED ACCESS ROAD
- · - · - EXISTING POWER LINE
- 18" CMP REQUIRED

GREAT WESTERN OIL & GAS COMPANY

TAILHOLT FD11-2D, FD11-6D, FD11-28D, FD11-3D,
 FD11-10D, FD11-13D & FD11-17D (OFF-SITE TANK PAD)
 SECTION 11, T6N, R67W, 6th P.M.
 285' FNL 1870' FEL

UES Uintah Engineering & Land Surveying
 85 South 200 East Vernal, Utah 84078
 (435) 789-1017 * FAX (435) 789-1813



ACCESS ROAD MAP

10	16	12
MONTH	DAY	YEAR

SCALE: 1" = 2000' DRAWN BY: A.T. REV: 01-10-13 J.L.H. **B** TOPO

GREAT WESTERN OIL & GAS COMPANY
TAILHOLT FD11-2D, FD11-6D, FD11-28D,
FD11-3D, FD11-10D, FD11-13D & FD11-17D
(OFF-SITE TANK PAD)
SECTION 11, T6N, R67W, 6th P.M.

PROCEED IN AN EASTERLY DIRECTION FROM WINDSOR, COLORADO ALONG COUNTY ROAD 68 APPROXIMATELY 2.0 MILES TO THE JUNCTION OF THIS ROAD AND COUNTY ROAD 21 TO THE NORTH; TURN LEFT AND PROCEED IN A NORTHERLY DIRECTION APPROXIMATELY 2.0 MILES TO THE JUNCTION OF THIS ROAD AND COUNTY ROAD 72 TO THE EAST; TURN RIGHT AND PROCEED IN AN EASTERLY DIRECTION APPROXIMATELY 0.7 MILES TO THE BEGINNING OF THE PROPOSED ACCESS ROAD TO THE SOUTH; FOLLOW ROAD FLAGS IN A SOUTHWESTERLY DIRECTION APPROXIMATELY 252' TO THE PROPOSED LOCATION.

TOTAL DISTANCE FROM WINDSOR, COLORADO TO THE PROPOSED LOCATION IS APPROXIMATELY 4.7 MILES.