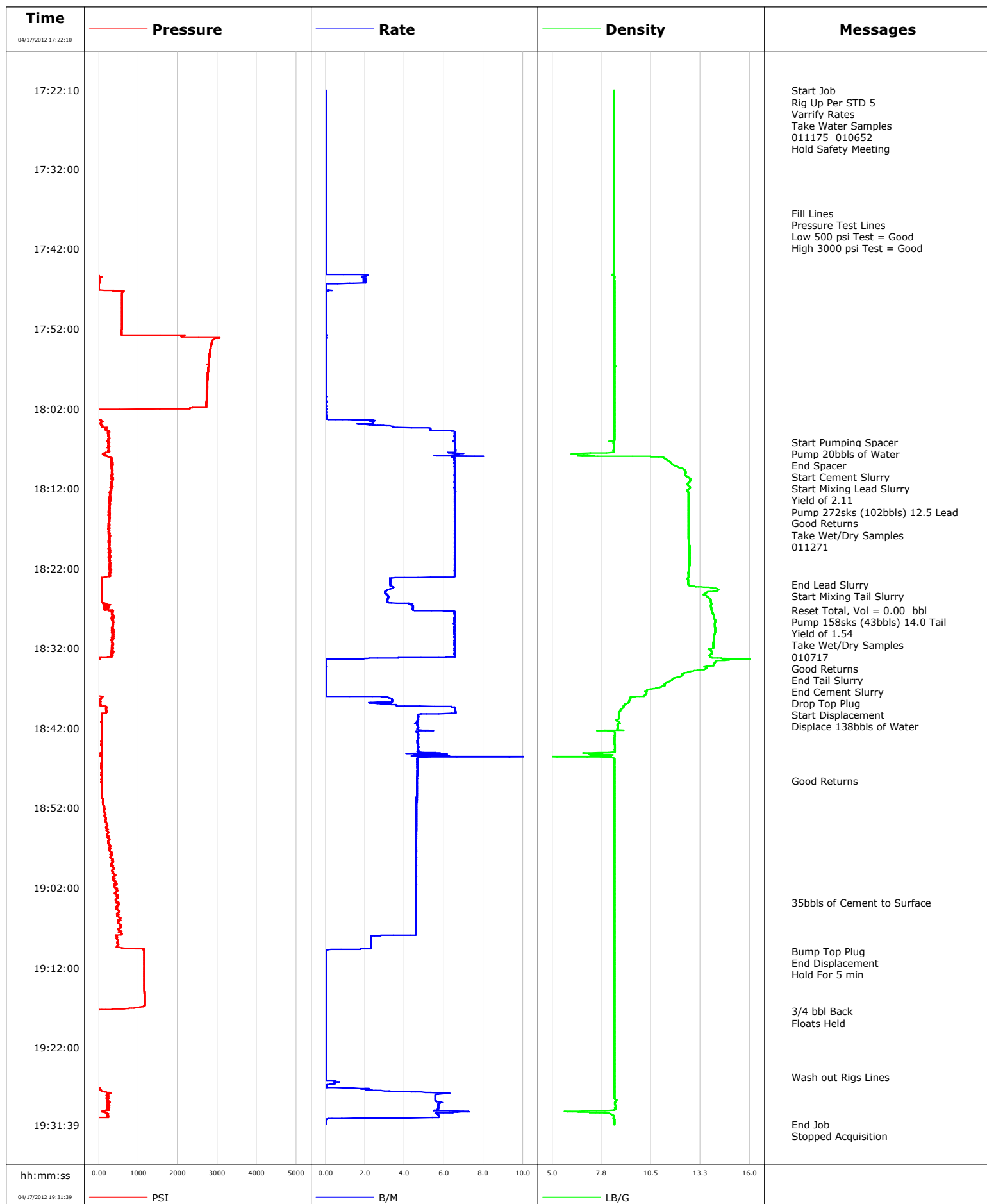


Well	EF16B-27 P	Client	ENCANA
Field	NORTH PARACHUTE	SIR No.	
Engineer	DANT RYAN	Job Type	9 5/8 SURFACE CASSING
Country	United States	Job Date	04-17-2012

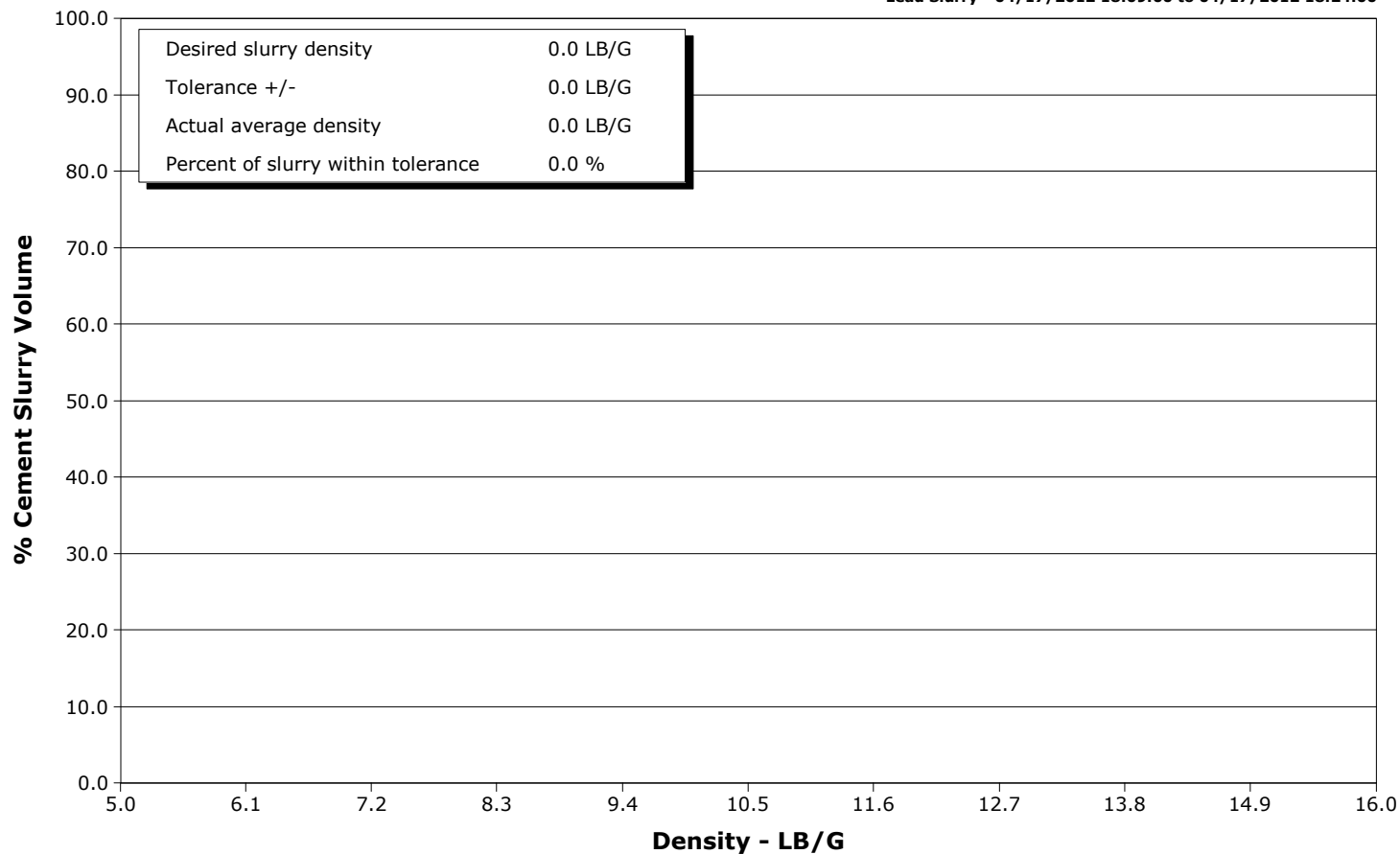


SchlumbergerCementing Qa/Qc Density Report

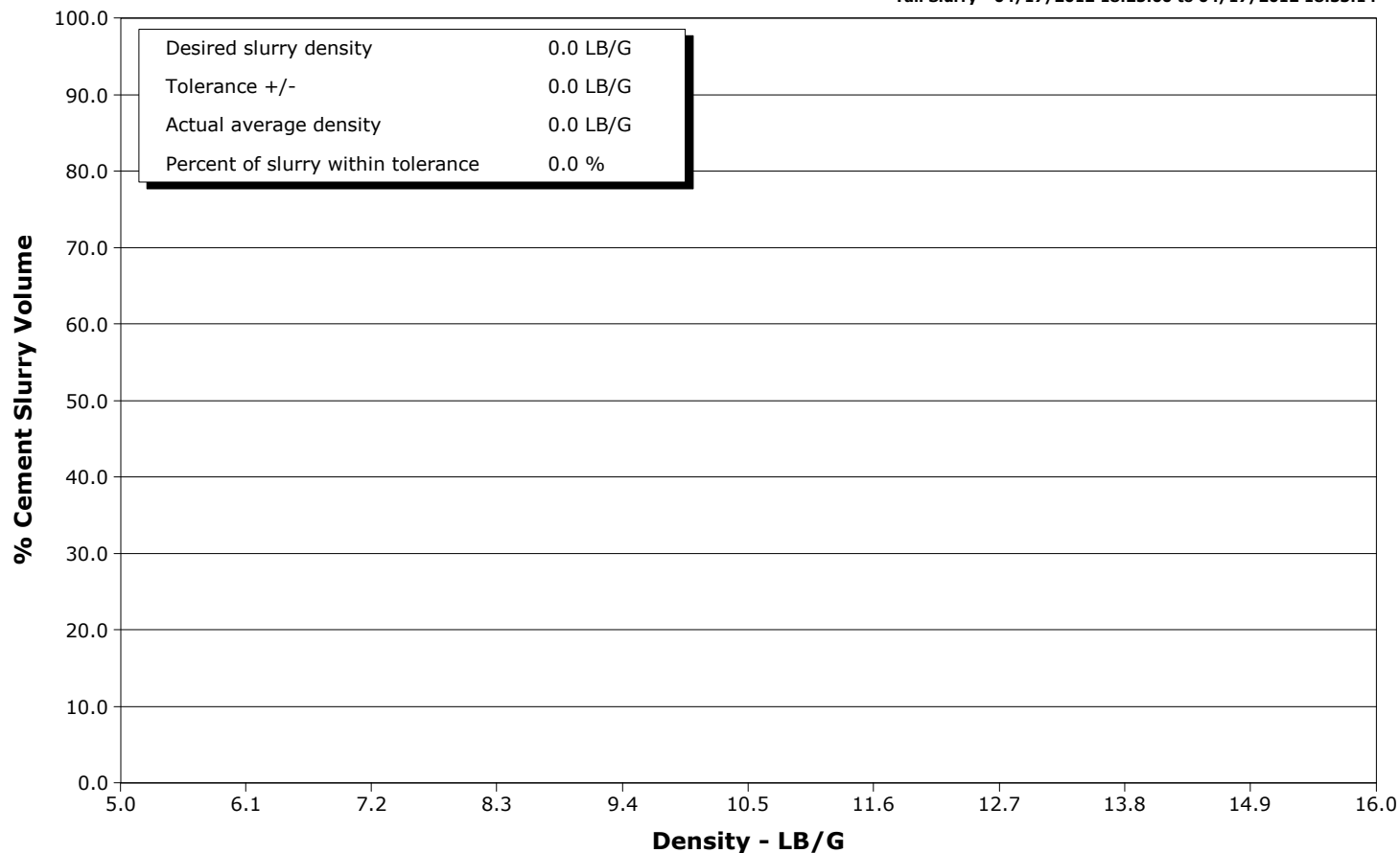
Well EF16B-27 P
Field NORTH PARACHUTE
Engineer DANT RYAN
Country United States

Client ENCANA
SIR No.
Job Type 9 5/8 SURFACE CASSING
Job Date 04-17-2012

Lead Slurry - 04/17/2012 18:09:00 to 04/17/2012 18:24:00



Tail Slurry - 04/17/2012 18:25:00 to 04/17/2012 18:33:14





Cementing Service Report

				Customer ENCANA		Job Number 759614		
Well EF16B-27 P EF16B-27 P			Location (legal) P27		Schlumberger Location		Job Start Apr/17/2012	
Field NORTH PARACHUTE		Formation Name/Type Shale		Deviation	Bit Size 12.3 in	Well MD 1827.0 ft	Well TVD 1827.0 ft	
County GARFIELD		State/Province Colorado		BHP	BHST 100 degF	BHCT 87 degF	Pore Press. Gradient	
Well Master 0631244222		API/UWI						
Rig Name PATTERSON 303		Drilled For Gas	Service Via Land	Casing/Liner				
				Depth, ft	Size, in	Weight, lb/ft	Grade	Thread
Offshore Zone		Well Class New	Well Type Development	120.0	16.000	65.0	N/A	N/A
				1827.0	9.630	36.0	J55	8RD
Drilling Fluid Type Bentonite		Max. Density 9.30 lb/gal	Plastic Viscosity 21.000 cP	Tubing/Drill Pipe				
				Depth,	Size,	Weight,	Grade	Thread
Service Line Cementing		Job Type 9 5/8 SURFACE CASSING						
Max. Allowed Tub. Press		Max. Allowed Ann. Press	WH Connection Single Cement head	Perforations/Open Hole				
				Top,	Bottom,		No. of Shots	Total Interval
								Diameter
				Treat Down Casing	Displacement 138.0 bbl	Packer Type	Packer Depth	
				Tubing Vol.	Casing Vol. 141.0 bbl	Annular Vol. 112.0 bbl	Openhole Vol. 262.0 bbl	
Casing/Tubing Secured <input checked="" type="checkbox"/>		1 Hole Vol. Circulated prior to Cement <input checked="" type="checkbox"/>		Casing Tools		Squeeze Job		
Lift Pressure 904 psi				Shoe Type Float		Squeeze Type		
Pipe Rotated <input type="checkbox"/>		Pipe Reciprocated <input type="checkbox"/>		Shoe Depth 1827.0 ft		Tool Type		
No. Centralizers		Top Plugs 1	Bottom Plugs	Stage Tool Type		Tool Depth		
Cement Head Type Single				Stage Tool Depth		Tail Pipe Size		
Job Scheduled For Apr/17/2012 14:30		Arrived on Location Apr/17/2012 14:30		Leave Location Apr/17/2012		Collar Type Float		Tail Pipe Depth
						Collar Depth 1779.0 ft		Sqz. Total Vol.
Date	Time 24-hr clock	Treating Pressure PSI	Flow Rate B/M	Density LB/G	Volume BBL	Message		
04/17/2012	17:21:54					Started Acquisition		
04/17/2012	17:22:09					Started Recording		
04/17/2012	17:22:10	0	0.0	0.00	0.0			
04/17/2012	17:22:11					Start Job		
04/17/2012	17:22:11	0	0.0	0.00	0.0			
04/17/2012	17:22:12					Rig Up Per STD 5		
04/17/2012	17:22:12					Varrify Rates		
04/17/2012	17:22:12					Take Water Samples		
04/17/2012	17:22:12	0	0.0	0.00	0.0			
04/17/2012	17:22:13					011175 010652		
04/17/2012	17:22:13					Hold Safety Meeting		
04/17/2012	17:22:13	0	0.0	0.00	0.0			
04/17/2012	17:22:24	0	0.0	0.00	0.0			
04/17/2012	17:22:54	0	0.0	0.00	0.0			
04/17/2012	17:23:24	0	0.0	0.00	0.0			
04/17/2012	17:23:54	0	0.0	0.00	0.0			
04/17/2012	17:24:24	0	0.0	0.00	0.0			
04/17/2012	17:24:54	0	0.0	0.00	0.0			
04/17/2012	17:25:24	0	0.0	0.00	0.0			
04/17/2012	17:25:54	0	0.0	0.00	0.0			
04/17/2012	17:26:24	0	0.0	0.00	0.0			

Well EF16B-27 P EF16B-27 P			Field NORTH PARACHUTE		Job Start Apr/17/2012	Customer ENCANA	Job Number 759614
Date	Time 24-hr clock	Treating Pressure PSI	Flow Rate B/M	Density LB/G	Volume BBL	Message	
04/17/2012	17:27:24	0	0.0	0.00	0.0		
04/17/2012	17:27:54	0	0.0	0.00	0.0		
04/17/2012	17:28:24	0	0.0	0.00	0.0		
04/17/2012	17:28:54	0	0.0	0.00	0.0		
04/17/2012	17:29:24	0	0.0	0.00	0.0		
04/17/2012	17:29:54	0	0.0	0.00	0.0		
04/17/2012	17:30:24	0	0.0	0.00	0.0		
04/17/2012	17:30:54	0	0.0	0.00	0.0		
04/17/2012	17:31:24	0	0.0	0.00	0.0		
04/17/2012	17:31:54	0	0.0	0.00	0.0		
04/17/2012	17:32:24	0	0.0	0.00	0.0		
04/17/2012	17:32:54	0	0.0	0.00	0.0		
04/17/2012	17:33:24	0	0.0	0.00	0.0		
04/17/2012	17:33:54	0	0.0	0.00	0.0		
04/17/2012	17:34:24	0	0.0	0.00	0.0		
04/17/2012	17:34:54	0	0.0	0.00	0.0		
04/17/2012	17:35:24	0	0.0	0.00	0.0		
04/17/2012	17:35:54	0	0.0	0.00	0.0		
04/17/2012	17:36:24	0	0.0	0.00	0.0		
04/17/2012	17:36:54	0	0.0	0.00	0.0		
04/17/2012	17:37:24	0	0.0	0.00	0.0		
04/17/2012	17:37:33					Fill Lines	
04/17/2012	17:37:33	0	0.0	0.00	0.0		
04/17/2012	17:37:34					Pressure Test Lines	
04/17/2012	17:37:34	0	0.0	0.00	0.0		
04/17/2012	17:37:35					Low 500 psi Test = Good	
04/17/2012	17:37:35					High 3000 psi Test = Good	
04/17/2012	17:37:35	0	0.0	0.00	0.0		
04/17/2012	17:37:54	0	0.0	0.00	0.0		
04/17/2012	17:38:24	0	0.0	0.00	0.0		
04/17/2012	17:38:54	0	0.0	0.00	0.0		
04/17/2012	17:39:24	0	0.0	0.00	0.0		
04/17/2012	17:39:54	0	0.0	0.00	0.0		
04/17/2012	17:40:24	0	0.0	0.00	0.0		
04/17/2012	17:40:54	0	0.0	0.00	0.0		
04/17/2012	17:41:24	0	0.0	0.00	0.0		
04/17/2012	17:41:54	0	0.0	0.00	0.0		
04/17/2012	17:42:24	0	0.0	0.00	0.0		
04/17/2012	17:42:54	0	0.0	0.00	0.0		
04/17/2012	17:43:24	0	0.0	0.00	0.0		
04/17/2012	17:43:54	0	0.0	0.00	0.0		
04/17/2012	17:44:24	0	0.0	0.00	0.0		
04/17/2012	17:44:54	0	0.0	0.00	0.0		
04/17/2012	17:45:24	0	0.0	0.00	0.0		
04/17/2012	17:45:54	0	0.0	0.00	0.0		
04/17/2012	17:46:24	0	0.0	0.00	0.0		
04/17/2012	17:46:54	0	0.0	0.00	0.0		
04/17/2012	17:47:24	0	0.0	0.00	0.0		
04/17/2012	17:47:54	0	0.0	0.00	0.0		
04/17/2012	17:48:24	0	0.0	0.00	0.0		
04/17/2012	17:48:54	0	0.0	0.00	0.0		
04/17/2012	17:49:24	0	0.0	0.00	0.0		
04/17/2012	17:49:54	0	0.0	0.00	0.0		
04/17/2012	17:50:24	0	0.0	0.00	0.0		

Well			Field		Job Start	Customer	Job Number
EF16B-27 P EF16B-27 P			NORTH PARACHUTE		Apr/17/2012	ENCANA	759614
Date	Time 24-hr clock	Treating Pressure PSI	Flow Rate B/M	Density LB/G	Volume BBL	Message	
04/17/2012	17:51:24	0	0.0	0.00	0.0		
04/17/2012	17:51:54	0	0.0	0.00	0.0		
04/17/2012	17:52:24	0	0.0	0.00	0.0		
04/17/2012	17:52:54	0	0.0	0.00	0.0		
04/17/2012	17:53:24	0	0.0	0.00	0.0		
04/17/2012	17:53:54	0	0.0	0.00	0.0		
04/17/2012	17:54:24	0	0.0	0.00	0.0		
04/17/2012	17:54:54	0	0.0	0.00	0.0		
04/17/2012	17:55:24	0	0.0	0.00	0.0		
04/17/2012	17:55:54	0	0.0	0.00	0.0		
04/17/2012	17:56:24	0	0.0	0.00	0.0		
04/17/2012	17:56:54	0	0.0	0.00	0.0		
04/17/2012	17:57:24	0	0.0	0.00	0.0		
04/17/2012	17:57:54	0	0.0	0.00	0.0		
04/17/2012	17:58:24	0	0.0	0.00	0.0		
04/17/2012	17:58:54	0	0.0	0.00	0.0		
04/17/2012	17:59:24	0	0.0	0.00	0.0		
04/17/2012	17:59:54	0	0.0	0.00	0.0		
04/17/2012	18:00:24	0	0.0	0.00	0.0		
04/17/2012	18:00:54	0	0.0	0.00	0.0		
04/17/2012	18:01:24	0	0.0	0.00	0.0		
04/17/2012	18:01:54	0	0.0	0.00	0.0		
04/17/2012	18:02:24	0	0.0	0.00	0.0		
04/17/2012	18:02:54	0	0.0	0.00	0.0		
04/17/2012	18:03:24	0	0.0	0.00	0.0		
04/17/2012	18:03:54	0	0.0	0.00	0.0		
04/17/2012	18:04:24	0	0.0	0.00	0.0		
04/17/2012	18:04:54	0	0.0	0.00	0.0		
04/17/2012	18:05:24	0	0.0	0.00	0.0		
04/17/2012	18:05:54	0	0.0	0.00	0.0		
04/17/2012	18:06:13					Start Pumping Spacer	
04/17/2012	18:06:13	0	0.0	0.00	0.0		
04/17/2012	18:06:17					Pump 20bbls of Water	
04/17/2012	18:06:17	0	0.0	0.00	0.0		
04/17/2012	18:06:24	0	0.0	0.00	0.0		
04/17/2012	18:06:54	0	0.0	0.00	0.0		
04/17/2012	18:07:00					End Spacer	
04/17/2012	18:07:00	0	0.0	0.00	0.0		
04/17/2012	18:07:24	0	0.0	0.00	0.0		
04/17/2012	18:07:54	0	0.0	0.00	0.0		
04/17/2012	18:08:00					Start Cement Slurry	
04/17/2012	18:08:00	0	0.0	0.00	0.0		
04/17/2012	18:08:24	0	0.0	0.00	0.0		
04/17/2012	18:08:54	0	0.0	0.00	0.0		
04/17/2012	18:09:00					Start Mixing Lead Slurry	
04/17/2012	18:09:00					Yield of 2.11	
04/17/2012	18:09:00					Pump 272sks (102bbls) 12.5 Lead	
04/17/2012	18:09:00					Good Returns	
04/17/2012	18:09:00					Take Wet/Dry Samples	
04/17/2012	18:09:00					011271	
04/17/2012	18:09:00	0	0.0	0.00	0.0		
04/17/2012	18:09:24	0	0.0	0.00	0.0		
04/17/2012	18:09:54	0	0.0	0.00	0.0		
04/17/2012	18:10:24	0	0.0	0.00	0.0		

Well EF16B-27 P EF16B-27 P			Field NORTH PARACHUTE		Job Start Apr/17/2012	Customer ENCANA	Job Number 759614
Date	Time 24-hr clock	Treating Pressure PSI	Flow Rate B/M	Density LB/G	Volume BBL	Message	
04/17/2012	18:11:24	0	0.0	0.00	0.0		
04/17/2012	18:11:54	0	0.0	0.00	0.0		
04/17/2012	18:12:24	0	0.0	0.00	0.0		
04/17/2012	18:12:54	0	0.0	0.00	0.0		
04/17/2012	18:13:24	0	0.0	0.00	0.0		
04/17/2012	18:13:54	0	0.0	0.00	0.0		
04/17/2012	18:14:24	0	0.0	0.00	0.0		
04/17/2012	18:14:54	0	0.0	0.00	0.0		
04/17/2012	18:15:24	0	0.0	0.00	0.0		
04/17/2012	18:15:54	0	0.0	0.00	0.0		
04/17/2012	18:16:24	0	0.0	0.00	0.0		
04/17/2012	18:16:54	0	0.0	0.00	0.0		
04/17/2012	18:17:24	0	0.0	0.00	0.0		
04/17/2012	18:17:54	0	0.0	0.00	0.0		
04/17/2012	18:18:24	0	0.0	0.00	0.0		
04/17/2012	18:18:54	0	0.0	0.00	0.0		
04/17/2012	18:19:24	0	0.0	0.00	0.0		
04/17/2012	18:19:54	0	0.0	0.00	0.0		
04/17/2012	18:20:24	0	0.0	0.00	0.0		
04/17/2012	18:20:54	0	0.0	0.00	0.0		
04/17/2012	18:21:24	0	0.0	0.00	0.0		
04/17/2012	18:21:54	0	0.0	0.00	0.0		
04/17/2012	18:22:24	0	0.0	0.00	0.0		
04/17/2012	18:22:54	0	0.0	0.00	0.0		
04/17/2012	18:23:24	0	0.0	0.00	0.0		
04/17/2012	18:23:54	0	0.0	0.00	0.0		
04/17/2012	18:24:00					End Lead Slurry	
04/17/2012	18:24:00	0	0.0	0.00	0.0		
04/17/2012	18:24:24	0	0.0	0.00	0.0		
04/17/2012	18:24:54	0	0.0	0.00	0.0		
04/17/2012	18:25:00					Start Mixing Tail Slurry	
04/17/2012	18:25:00	0	0.0	0.00	0.0		
04/17/2012	18:25:24	0	0.0	0.00	0.0		
04/17/2012	18:25:54	0	0.0	0.00	0.0		
04/17/2012	18:26:24	0	0.0	0.00	0.0		
04/17/2012	18:26:54	0	0.0	0.00	0.0		
04/17/2012	18:27:15					Reset Total, Vol = 0.00 bbl	
04/17/2012	18:27:15	0	0.0	0.00	0.0		
04/17/2012	18:27:17					Pump 158sks (43bbls) 14.0 Tail	
04/17/2012	18:27:17					Yield of 1.54	
04/17/2012	18:27:17	0	0.0	0.00	0.0		
04/17/2012	18:27:18					Take Wet/Dry Samples	
04/17/2012	18:27:18					010717	
04/17/2012	18:27:18					Good Returns	
04/17/2012	18:27:18	0	0.0	0.00	0.0		
04/17/2012	18:27:24	0	0.0	0.00	0.0		
04/17/2012	18:27:54	0	0.0	0.00	0.0		
04/17/2012	18:28:24	0	0.0	0.00	0.0		
04/17/2012	18:28:54	0	0.0	0.00	0.0		
04/17/2012	18:29:24	0	0.0	0.00	0.0		
04/17/2012	18:29:54	0	0.0	0.00	0.0		
04/17/2012	18:30:24	0	0.0	0.00	0.0		
04/17/2012	18:30:54	0	0.0	0.00	0.0		
04/17/2012	18:31:24	0	0.0	0.00	0.0		

Well EF16B-27 P EF16B-27 P			Field NORTH PARACHUTE		Job Start Apr/17/2012	Customer ENCANA	Job Number 759614
Date	Time 24-hr clock	Treating Pressure PSI	Flow Rate B/M	Density LB/G	Volume BBL	Message	
04/17/2012	18:32:24	0	0.0	0.00	0.0		
04/17/2012	18:32:54	0	0.0	0.00	0.0		
04/17/2012	18:33:14					End Tail Slurry	
04/17/2012	18:33:14	0	0.0	0.00	0.0		
04/17/2012	18:33:15					End Cement Slurry	
04/17/2012	18:33:15	0	0.0	0.00	0.0		
04/17/2012	18:33:16					Drop Top Plug	
04/17/2012	18:33:16	0	0.0	0.00	0.0		
04/17/2012	18:33:18					Start Displacement	
04/17/2012	18:33:18	0	0.0	0.00	0.0		
04/17/2012	18:33:20					Displace 138bbls of Water	
04/17/2012	18:33:20	0	0.0	0.00	0.0		
04/17/2012	18:33:24	0	0.0	0.00	0.0		
04/17/2012	18:33:54	0	0.0	0.00	0.0		
04/17/2012	18:34:24	0	0.0	0.00	0.0		
04/17/2012	18:34:54	0	0.0	0.00	0.0		
04/17/2012	18:35:24	0	0.0	0.00	0.0		
04/17/2012	18:35:54	0	0.0	0.00	0.0		
04/17/2012	18:36:24	0	0.0	0.00	0.0		
04/17/2012	18:36:54	0	0.0	0.00	0.0		
04/17/2012	18:37:24	0	0.0	0.00	0.0		
04/17/2012	18:37:54	0	0.0	0.00	0.0		
04/17/2012	18:38:24	0	0.0	0.00	0.0		
04/17/2012	18:38:54	0	0.0	0.00	0.0		
04/17/2012	18:39:24	0	0.0	0.00	0.0		
04/17/2012	18:39:54	0	0.0	0.00	0.0		
04/17/2012	18:40:24	0	0.0	0.00	0.0		
04/17/2012	18:40:54	0	0.0	0.00	0.0		
04/17/2012	18:41:24	0	0.0	0.00	0.0		
04/17/2012	18:41:54	0	0.0	0.00	0.0		
04/17/2012	18:42:24	0	0.0	0.00	0.0		
04/17/2012	18:42:54	0	0.0	0.00	0.0		
04/17/2012	18:43:24	0	0.0	0.00	0.0		
04/17/2012	18:43:54	0	0.0	0.00	0.0		
04/17/2012	18:44:24	0	0.0	0.00	0.0		
04/17/2012	18:44:54	0	0.0	0.00	0.0		
04/17/2012	18:45:24	0	0.0	0.00	0.0		
04/17/2012	18:45:54	0	0.0	0.00	0.0		
04/17/2012	18:46:24	0	0.0	0.00	0.0		
04/17/2012	18:46:54	0	0.0	0.00	0.0		
04/17/2012	18:47:24	0	0.0	0.00	0.0		
04/17/2012	18:47:54	0	0.0	0.00	0.0		
04/17/2012	18:48:24	0	0.0	0.00	0.0		
04/17/2012	18:48:35					Good Returns	
04/17/2012	18:48:35	0	0.0	0.00	0.0		
04/17/2012	18:48:54	0	0.0	0.00	0.0		
04/17/2012	18:49:24	0	0.0	0.00	0.0		
04/17/2012	18:49:54	0	0.0	0.00	0.0		
04/17/2012	18:50:24	0	0.0	0.00	0.0		
04/17/2012	18:50:54	0	0.0	0.00	0.0		
04/17/2012	18:51:24	0	0.0	0.00	0.0		
04/17/2012	18:51:54	0	0.0	0.00	0.0		
04/17/2012	18:52:24	0	0.0	0.00	0.0		
04/17/2012	18:52:54	0	0.0	0.00	0.0		

Well EF16B-27 P EF16B-27 P			Field NORTH PARACHUTE		Job Start Apr/17/2012	Customer ENCANA	Job Number 759614
Date	Time 24-hr clock	Treating Pressure PSI	Flow Rate B/M	Density LB/G	Volume BBL	Message	
04/17/2012	18:53:54	0	0.0	0.00	0.0		
04/17/2012	18:54:24	0	0.0	0.00	0.0		
04/17/2012	18:54:54	0	0.0	0.00	0.0		
04/17/2012	18:55:24	0	0.0	0.00	0.0		
04/17/2012	18:55:54	0	0.0	0.00	0.0		
04/17/2012	18:56:24	0	0.0	0.00	0.0		
04/17/2012	18:56:54	0	0.0	0.00	0.0		
04/17/2012	18:57:24	0	0.0	0.00	0.0		
04/17/2012	18:57:54	0	0.0	0.00	0.0		
04/17/2012	18:58:24	0	0.0	0.00	0.0		
04/17/2012	18:58:54	0	0.0	0.00	0.0		
04/17/2012	18:59:24	0	0.0	0.00	0.0		
04/17/2012	18:59:54	0	0.0	0.00	0.0		
04/17/2012	19:00:24	0	0.0	0.00	0.0		
04/17/2012	19:00:54	0	0.0	0.00	0.0		
04/17/2012	19:01:24	0	0.0	0.00	0.0		
04/17/2012	19:01:54	0	0.0	0.00	0.0		
04/17/2012	19:02:24	0	0.0	0.00	0.0		
04/17/2012	19:02:54	0	0.0	0.00	0.0		
04/17/2012	19:03:24	0	0.0	0.00	0.0		
04/17/2012	19:03:51					35bbls of Cement to Surface	
04/17/2012	19:03:51	0	0.0	0.00	0.0		
04/17/2012	19:03:54	0	0.0	0.00	0.0		
04/17/2012	19:04:24	0	0.0	0.00	0.0		
04/17/2012	19:04:54	0	0.0	0.00	0.0		
04/17/2012	19:05:24	0	0.0	0.00	0.0		
04/17/2012	19:05:54	0	0.0	0.00	0.0		
04/17/2012	19:06:24	0	0.0	0.00	0.0		
04/17/2012	19:06:54	0	0.0	0.00	0.0		
04/17/2012	19:07:24	0	0.0	0.00	0.0		
04/17/2012	19:07:54	0	0.0	0.00	0.0		
04/17/2012	19:08:24	0	0.0	0.00	0.0		
04/17/2012	19:08:54	0	0.0	0.00	0.0		
04/17/2012	19:09:24	0	0.0	0.00	0.0		
04/17/2012	19:09:54	0	0.0	0.00	0.0		
04/17/2012	19:09:58					Bump Top Plug	
04/17/2012	19:09:58	0	0.0	0.00	0.0		
04/17/2012	19:09:59					End Displacement	
04/17/2012	19:09:59	0	0.0	0.00	0.0		
04/17/2012	19:10:24	0	0.0	0.00	0.0		
04/17/2012	19:10:54	0	0.0	0.00	0.0		
04/17/2012	19:11:24	0	0.0	0.00	0.0		
04/17/2012	19:11:54	0	0.0	0.00	0.0		
04/17/2012	19:12:24	0	0.0	0.00	0.0		
04/17/2012	19:12:50					Hold For 5 min	
04/17/2012	19:12:50	0	0.0	0.00	0.0		
04/17/2012	19:12:54	0	0.0	0.00	0.0		
04/17/2012	19:13:24	0	0.0	0.00	0.0		
04/17/2012	19:13:54	0	0.0	0.00	0.0		
04/17/2012	19:14:24	0	0.0	0.00	0.0		
04/17/2012	19:14:54	0	0.0	0.00	0.0		
04/17/2012	19:15:24	0	0.0	0.00	0.0		
04/17/2012	19:15:54	0	0.0	0.00	0.0		
04/17/2012	19:16:24	0	0.0	0.00	0.0		

Well EF16B-27 P EF16B-27 P			Field NORTH PARACHUTE		Job Start Apr/17/2012	Customer ENCANA	Job Number 759614
Date	Time 24-hr clock	Treating Pressure PSI	Flow Rate B/M	Density LB/G	Volume BBL	Message	
04/17/2012	19:17:24					3/4 bbl Back	
04/17/2012	19:17:24	0	0.0	0.00	0.0		
04/17/2012	19:17:25					Floats Held	
04/17/2012	19:17:25	0	0.0	0.00	0.0		
04/17/2012	19:17:54	0	0.0	0.00	0.0		
04/17/2012	19:18:24	0	0.0	0.00	0.0		
04/17/2012	19:18:54	0	0.0	0.00	0.0		
04/17/2012	19:19:24	0	0.0	0.00	0.0		
04/17/2012	19:19:54	0	0.0	0.00	0.0		
04/17/2012	19:20:24	0	0.0	0.00	0.0		
04/17/2012	19:20:54	0	0.0	0.00	0.0		
04/17/2012	19:21:24	0	0.0	0.00	0.0		
04/17/2012	19:21:54	0	0.0	0.00	0.0		
04/17/2012	19:22:24	0	0.0	0.00	0.0		
04/17/2012	19:22:54	0	0.0	0.00	0.0		
04/17/2012	19:23:24	0	0.0	0.00	0.0		
04/17/2012	19:23:54	0	0.0	0.00	0.0		
04/17/2012	19:24:24	0	0.0	0.00	0.0		
04/17/2012	19:24:54	0	0.0	0.00	0.0		
04/17/2012	19:25:24	0	0.0	0.00	0.0		
04/17/2012	19:25:40					Wash out Rigs Lines	
04/17/2012	19:25:40	0	0.0	0.00	0.0		
04/17/2012	19:25:54	0	0.0	0.00	0.0		
04/17/2012	19:26:24	0	0.0	0.00	0.0		
04/17/2012	19:26:54	0	0.0	0.00	0.0		
04/17/2012	19:27:24	0	0.0	0.00	0.0		
04/17/2012	19:27:54	0	0.0	0.00	0.0		
04/17/2012	19:28:24	0	0.0	0.00	0.0		
04/17/2012	19:28:54	0	0.0	0.00	0.0		
04/17/2012	19:29:24	0	0.0	0.00	0.0		
04/17/2012	19:29:54	0	0.0	0.00	0.0		
04/17/2012	19:30:24	0	0.0	0.00	0.0		
04/17/2012	19:30:54	0	0.0	0.00	0.0		
04/17/2012	19:31:24	0	0.0	0.00	0.0		
04/17/2012	19:31:36					End Job	
04/17/2012	19:31:36	0	0.0	0.00	0.0		

Post Job Summary

Average Pump Rates, bbl/min					Volume of Fluid Injected, bbl			
Slurry 5.0	N2	Mud 0.0	Maximum Rate 6.5	Total Slurry 146.0	Mud 0.0	Spacer 20.0	N2	
Treating Pressure Summary, psi					Breakdown Fluid			
Maximum 1200	Final -16	Average 400	Bump Plug to 900	Breakdown	Type	Volume	Density	
Avg. N2 Percent		Designed Slurry Volume 146.0 bbl		Displacement 138.0 bbl	Mix Water Temp 60 degF	Cement Circulated to Surface? <input checked="" type="checkbox"/>	Volume 35.0 bbl	
						Washed Thru Perfs <input type="checkbox"/>	To	
Customer or Authorized Representative FLOYD ROBERTS			Schlumberger Supervisor DANT RYAN			Circulation Lost <input type="checkbox"/>	Job Completed <input checked="" type="checkbox"/>	
						-	-	



Service Order #:	
Date:	Apr/17/2012
Operating Time:	0.0
Client Rep:	ENCANA
Schlumberger Engineer:	DANT RYAN
Schlumberger FSM:	

To be completed by Company Rep. Please answer Y (Yes) or N (No) and add any comments below.

4	Evaluation						
4a	Main job objective achieved with no consequential non-productive time	10	yes	<input type="checkbox"/>	no	<input checked="" type="checkbox"/>	0
Sub-total							0%

Comments: (Please include a brief explanation for a "NO" response and summarize any innovations attempted on this well.)

Client:	Schlumberger:
Client Signature:	Schlumberger Signature: