

July 17, 2012

Pressure Test Records

Received 7/19/2012 Rifle
COGCC
NOAV 200355205

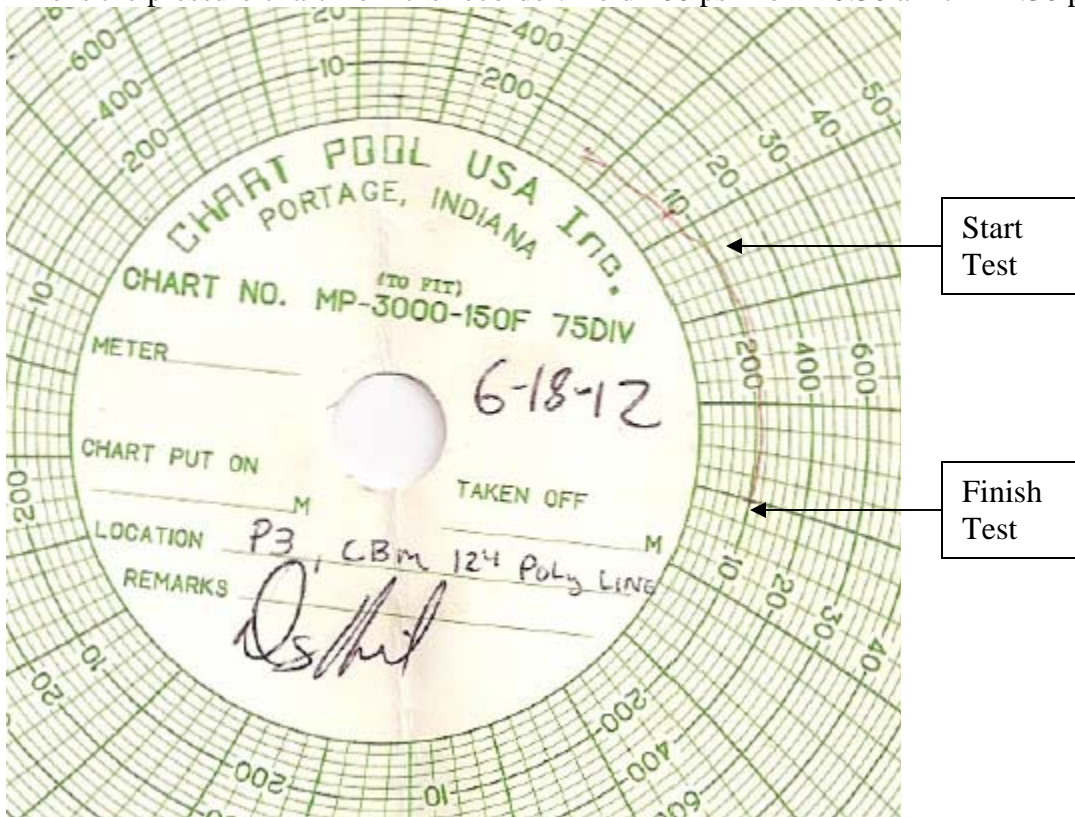
The following information contains charts and pressure data from the most recent pressure tests.

After repairs were made on June 17, 2012, the isolated section of the water line was tested to 200 psi at the low point of P3 valve.

Map for Reference:



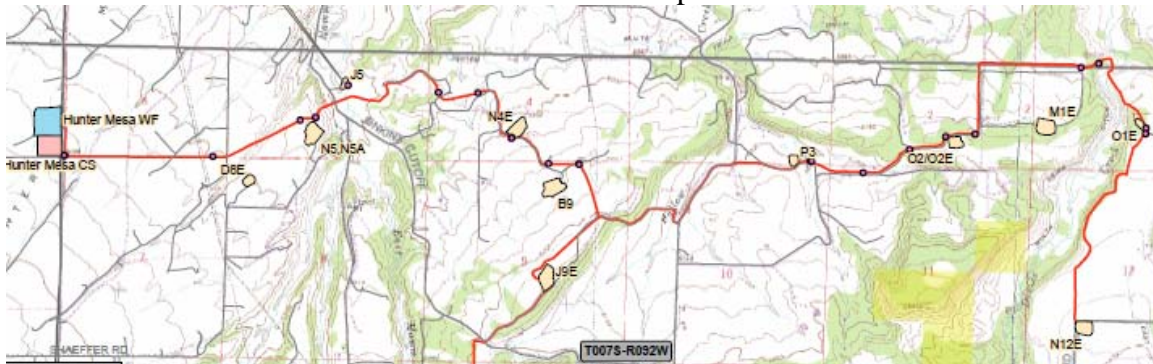
This is the pressure chart from the recorder. Held 200 psi from 10:30 am till 12:30 pm.



July 17, 2012

Pressure Test Records

In 2008 we tested the entire line as shown in this map:



Due to elevation changes we had to place 125 psi on the line at Hunter Mesa or the West end. This yielded the following pressures at the various key points:

Hunter Mesa(west)	125 psi (6093')
N-5	181 psi (5958')
J-5	265 psi (low point 5766')
B-9	75 psi (High Point 6204')
N-4E	159 psi (6009')
P-3	160 psi (6008')
O-2 (east)	90 psi (6170')

Here is the chart for a 24 hour test on the Poly pipeline in 2008.

