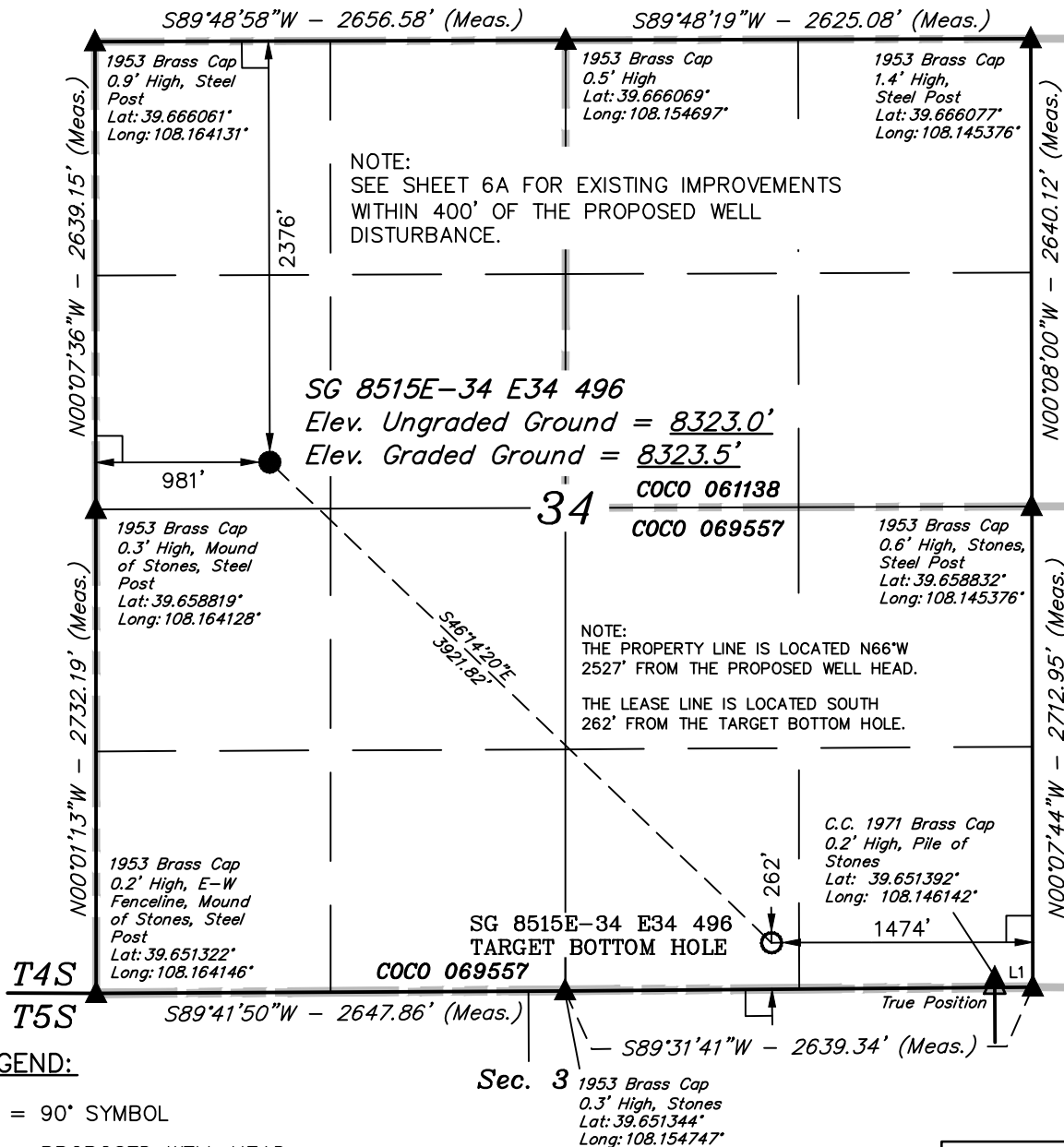


T4S, R96W, 6th P.M.



LEGEND:

- └─┘ = 90° SYMBOL
- = PROPOSED WELL HEAD.
- ▲ = SECTION CORNERS LOCATED.
- △ = SECTION CORNERS RE-ESTABLISHED.  
(Not Set on Ground.)

NAD 83 (TARGET BOTTOM HOLE)	NAD 83 (SURFACE LOCATION)
LATITUDE = 39°39'07.50" (39.652083)	LATITUDE = 39°39'34.36" (39.659544)
LONGITUDE = 108°09'02.20" (108.150611)	LONGITUDE = 108°09'38.32" (108.160644)
NAD 27 (TARGET BOTTOM HOLE)	NAD 27 (SURFACE LOCATION)
LATITUDE = 39°39'07.59" (39.652108)	LATITUDE = 39°39'34.45" (39.659569)
LONGITUDE = 108°08'59.91" (108.149975)	LONGITUDE = 108°09'36.03" (108.160008)

Encana OIL & GAS (USA) INC.

Well location, SG 8515E-34 E34 496, located as shown in the SW 1/4 NW 1/4 of Section 34, T4S, R96W, 6th P.M., Garfield County, Colorado.

BASIS OF ELEVATION

BENCH MARK (H79) LOCATED IN THE NE 1/4 OF SECTION 35, T4S, R98W, 6th P.M. TAKEN FROM THE BULL FORK QUADRANGLE, COLORADO, 7.5 MINUTE SERIES (TOPO GRAPHICAL MAP) PUBLISHED BY THE UNITED STATES DEPARTMENT OF THE INTERIOR, GEOLOGICAL SURVEY. SAID ELEVATION IS MARKED AS BEING 8535 FEET.

BASIS OF BEARINGS

BASIS OF BEARINGS IS A G.P.S. OBSERVATION.

LINE TABLE		
LINE	DIRECTION	LENGTH
L1	N89°31'41"E	215.17'



Sheet 1qq of 9



CERTIFICATE

THIS IS TO CERTIFY THAT THE ABOVE PLAT WAS PREPARED AND LOCATION AS SHOWN WAS STAKED ON THE GROUND FROM FIELD NOTES OF ACTUAL SURVEYS MADE BY ME OR UNDER MY SUPERVISION AND THAT THE SAME ARE TRUE AND CORRECT TO THE BEST OF MY KNOWLEDGE AND BELIEF.

REGISTERED LAND SURVEYOR  
REGISTRATION NO. 17492  
STATE OF COLORADO  
06-18-12

REVISED: 12-18-12 T.B.  
REVISED: 11-16-12 T.B.

UINTAH ENGINEERING & LAND SURVEYING  
85 SOUTH 200 EAST - VERNAL, UTAH 84078  
(435) 789-1017

SCALE 1" = 1000'	DATE SURVEYED: 06-01-12	DATE DRAWN: 07-05-12
PARTY B.B. C.C. T.B.	REFERENCES G.L.O. PLAT	
WEATHER COLD	FILE Encana OIL & GAS (USA) INC.	