

WELL LOCATION

T4S, R64W, 6th P.M.

2000 Alum. Cap
1.5' Below Ground
LS 7361
Lat: 39.723803°
Long: 104.508419°

2003 Alum. Cap,
1.5 Below Ground,
LS 23524
Lat: 39.723469°
Long: 104.489608°

N88°44'30"W - 2647.40' (Meas.)

N88°37'46"W - 2647.37' (Meas.)

NOTE:
SEE ADDENDUM TO LEGAL PLAT FOR
EXISTING IMPROVEMENTS WITHIN 400'
OF THE PROPOSED DISTURBANCE.

R 64 W
R 63 W

N00°42'21"E - 2624.82' (Meas.)

Private Alum. Cap
0.4' High LS #28285
Lat: 39.716600°
Long: 104.508533°

30' ROAD ROW
0.91 AC

2012 UELS Alum. Cap,
0.5 Below Ground,
LS 28285
Lat: 39.716222°
Long: 104.489758°

N00°54'47"E
2641.15' (Meas.)

N00°55'25"E
1320.55' (Meas.)

N00°41'49"E - 2624.44' (Meas.)

Target
Bottom
Hole
480'

LEASE A
1996 Alum. Cap,
LS 13895
Lat: 39.709166°
Long: 104.499278°

LEASE B
1996 Alum. Cap,
LS 13895
Lat: 39.709081°
Long: 104.494594°

LEASE C
1996 Alum. Cap,
LS 13895
Lat: 39.708975°
Long: 104.489911°

LEASE D
1996 Alum. Cap,
LS 13895
Lat: 39.708975°
Long: 104.489911°

LEASE E
1996 Alum. Cap,
0.6' Below Ground,
LS 13895
Lat: 39.708975°
Long: 104.489911°

LEASE F
2012 UELS Alum. Cap,
0.5 Below Ground,
LS 28285
Lat: 39.712597°
Long: 104.489833°

WALKER #12-1H
Elev. Ungraded Ground = 5712'

2012 UELS Alum Cap
0.5' High, LS 28285
Lat: 39.708397°
Long: 104.508647°

LEGEND:

- 90° SYMBOL
- PROPOSED WELL HEAD.
- SECTION CORNERS LOCATED.

NAD 83 (TARGET BOTTOM HOLE)		NAD 83 (SURFACE LOCATION)	
LATITUDE = 39°42'40.21" (39.711169)	LATITUDE = 39°42'38.90" (39.710806)	LATITUDE = 39°42'40.21" (39.711169)	LATITUDE = 39°42'38.90" (39.710806)
LONGITUDE = 104°30'24.89" (104.506914)	LONGITUDE = 104°29'26.74" (104.490761)	LONGITUDE = 104°30'24.89" (104.506914)	LONGITUDE = 104°29'26.74" (104.490761)
NAD 27 (TARGET BOTTOM HOLE)		NAD 27 (SURFACE LOCATION)	
LATITUDE = 39°42'40.26" (39.711183)	LATITUDE = 39°42'38.95" (39.710819)	LATITUDE = 39°42'40.26" (39.711183)	LATITUDE = 39°42'38.95" (39.710819)
LONGITUDE = 104°30'23.02" (104.506394)	LONGITUDE = 104°29'24.87" (104.490242)	LONGITUDE = 104°30'23.02" (104.506394)	LONGITUDE = 104°29'24.87" (104.490242)

PDOP = 1.5

Well location, WALKER #12-1H, located as shown in the SE 1/4 SE 1/4 of Section 12, T4S, R64W, 6th P.M. Arapahoe County, Colorado.

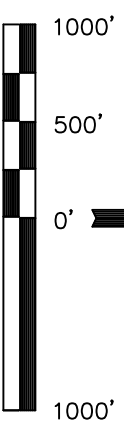
BASIS OF ELEVATION

BASIS OF BEARINGS

BASIS OF BEARINGS IS A G.P.S. OBSERVATION.

ACREAGES

LEASE	OWNER	ACRES
A	BARBER VENTURES, LLC	56.86
B	JOHN D. JORDAN & PATRICA JORDAN	39.09
C	RAYMOND L. WALKER	39.00
D	DAN R. GUERNSEY & CLOANN Y. GUERNSEY	40.00
E	MAX A. CAMPFIELD & AUDREY L. CAMPFIELD	1.00
F	KIMBALL L. JORDAN, SR	99.29
TOTAL GROSS ACRES		275.24



CERTIFICATE

THIS IS TO CERTIFY THAT THE ABOVE PLAT WAS PREPARED FROM FIELD NOTES OF ACTUAL SURVEYS MADE BY ME OR UNDER MY SUPERVISION AND THAT THE SAME ARE TRUE AND CORRECT TO THE BEST OF MY KNOWLEDGE AND BELIEF.

REV: 07-11-12 J.W.

UTIAH ENGINEERING & LAND SURVEYING
85 SOUTH 200 EAST - VERNAL, UTAH 84078
(435) 789-1017

SCALE 1" = 1000'

DATE SURVEYED:	DATE DRAWN:
06-11-12	06-18-12

PARTY	REFERENCES
J.H. C.M. B.L.B.	G.L.O. PLAT
WEATHER	FILE
WARM	ConocoPhillips Company

SECTION BREAKDOWN T4S, R64W, 6th P.M.

2000 Alum. Cap
1.5' Below Ground
LS 7361
Lat: 39.723603°
Long: 104.508647°

2003 Alum. Cap,
1.0 Below Ground,
LS 23524
Lat: 39.723644°
Long: 104.499014°

R
R
64
63
W
W

Well location, WALKER #12-1H, located as shown in the SE 1/4 SE 1/4 of Section 12, T4S, R64W, 6th P.m. Arapahoe County, Colorado.

BASIS OF ELEVATION

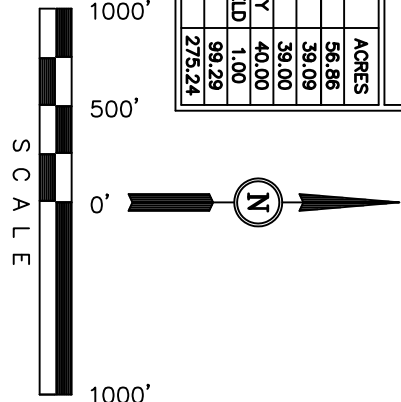
BENCHMARK 374 LOCATED ON THE SECTION LINE BETWEEN SECTIONS 12 & 13, T5S, R64W, 6th. P.M., TAKEN FROM 1988 PUBLISHED DATUM BY THE UNITED STATES DEPARTMENT OF THE INTERIOR, GEOLOGICAL SURVEY AS BEING 6054.61 FEET.

BASIS OF BEARINGS

BASIS OF BEARINGS IS A G.P.S. OBSERVATION.

ACREAGES		
LEASE	OWNER	ACRES
A	BARBER VENTURES, LLC	56.86
B	JOHN D. JORDAN & PATRICA JORDAN	39.09
C	RAYMOND L. WALKER	39.00
D	DAN R. GUERNSEY & CLOANN Y. GUERNSEY	40.00
E	MAX A. CAMPFIELD & AUDREY L. CAMPFIELD	1.00
F	KIMBALL L. JORDAN, SR	99.29
TOTAL GROSS ACRES		275.24

2012 UELS Alum. Cap,
0.5 Below Ground,
LS 28285
Lat: 39.716222°
Long: 104.489758°



NOTE:
SEE ADDENDUM TO LEGAL PLAT FOR
EXISTING IMPROVEMENTS WITHIN 400'
OF THE PROPOSED DISTURBANCE.

CERTIFICATE

THIS IS TO CERTIFY THAT THE ABOVE PLAT WAS PREPARED FROM FIELD NOTES OF ACTUAL SURVEYS MADE BY ME OR UNDER MY SUPERVISION AND THAT THE SAME ARE TRUE AND CORRECT TO THE BEST OF MY KNOWLEDGE AND BELIEF.

REGISTERED LAND SURVEYOR
REGISTRATION NO. 17492
STATE OF COLORADO
07-11-12

REV: 07-11-12 J.W.

UNTAH ENGINEERING & LAND SURVEYING

85 SOUTH 200 EAST - VERNAL, UTAH 84078
(435) 789-1017

SCALE	DATE SURVEYED:	DATE DRAWN:
1" = 1000'	06-11-12	06-18-12

PARTY	REFERENCES
J.H. C.M. B.L.B.	G.L.O. PLAT

WEATHER	FILE
WARM	ConocoPhillips Company

LEGEND:

- = 90° SYMBOL
- = PROPOSED WELL HEAD.
- = SECTION CORNERS LOCATED.

2012 UELS Alum. Cap
0.5' High, LS 28285
Lat: 39.709397°
Long: 104.508647°

1996 Alum. Cap,
LS 13895
Lat: 39.709186°
Long: 104.499278°

1996 Alum. Cap,
LS 13895
Lat: 39.709081°
Long: 104.494594°

1996 Alum. Cap,
0.6' Below Ground,
LS 13895
Lat: 39.708975°
Long: 104.489911°

LEASE A
39.8 AC
660' FSL
480' FWL

LEASE D
39.9 AC
660' FSL
480' FWL

LEASE F
39.9 AC
660' FSL
480' FWL

LEASE B
39.8 AC
660' FSL
454.7' FEL

LEASE C
39.0 AC
660' FSL
250' FEL

LEASE E
1.0 AC

2012 UELS Alum. Cap,
0.5 Below Ground,
LS 28285
Lat: 39.712597°
Long: 104.489833°

NAD 83 (TARGET BOTTOM HOLE)		NAD 83 (SURFACE LOCATION)	
LATITUDE = 39°42'40.21" (39.711169)	LATITUDE = 39°42'38.90" (39.710806)	LATITUDE = 39°42'38.90" (39.710806)	LATITUDE = 39°42'38.90" (39.710806)
LONGITUDE = 104°30'24.89" (104.506914)	LONGITUDE = 104°29'26.74" (104.490761)	LONGITUDE = 104°29'26.74" (104.490761)	LONGITUDE = 104°29'26.74" (104.490761)
NAD 27 (TARGET BOTTOM HOLE)		NAD 27 (SURFACE LOCATION)	
LATITUDE = 39°42'40.26" (39.711183)	LATITUDE = 39°42'38.95" (39.710819)	LATITUDE = 39°42'38.95" (39.710819)	LATITUDE = 39°42'38.95" (39.710819)
LONGITUDE = 104°30'23.02" (104.506394)	LONGITUDE = 104°29'24.87" (104.490242)	LONGITUDE = 104°29'24.87" (104.490242)	LONGITUDE = 104°29'24.87" (104.490242)