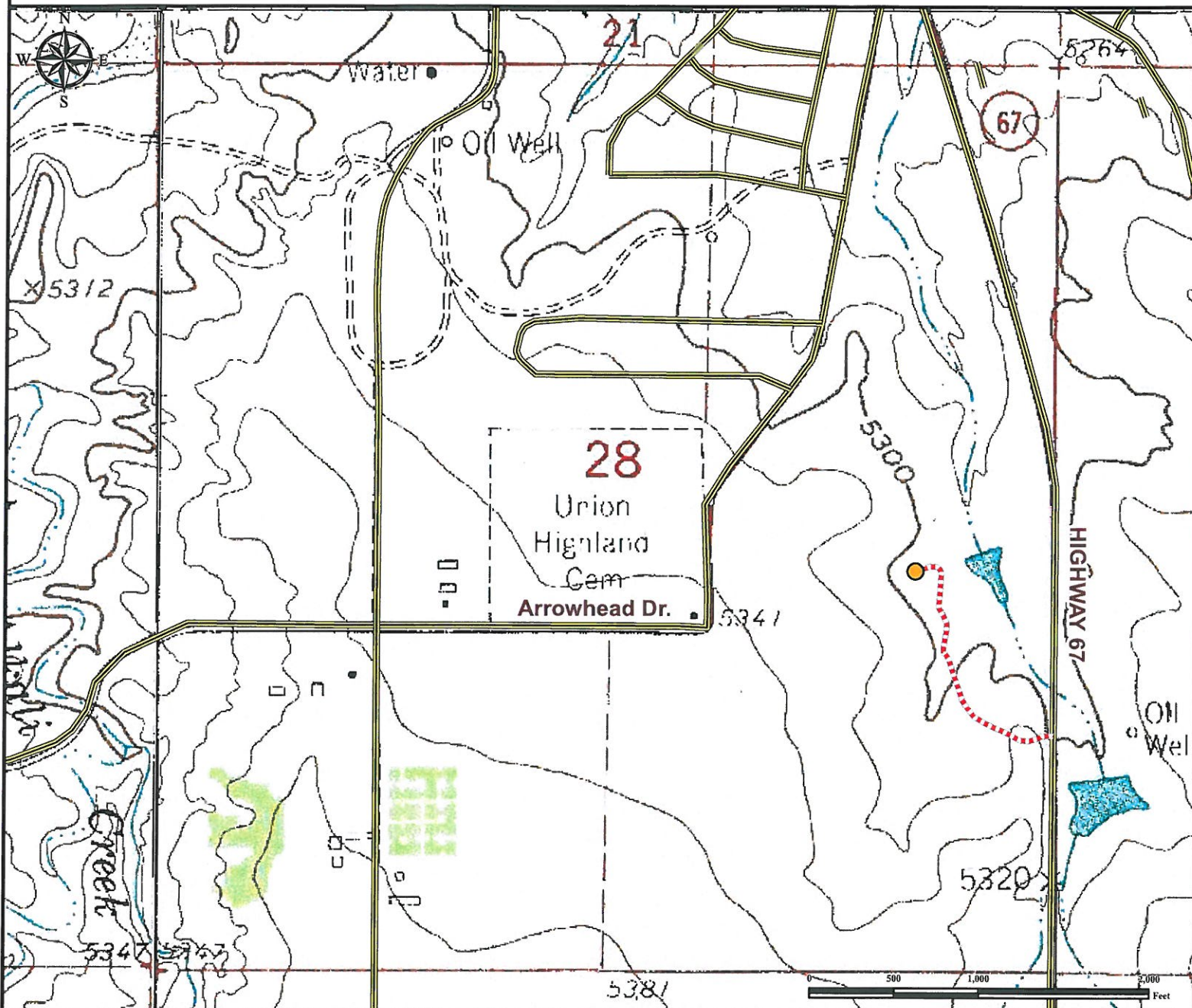


Access Road Map

G R O U P E R 0 9 - 2 8

NE¼ SE¼ SECTION 28, TOWNSHIP 19 SOUTH, RANGE 69 WEST OF THE 6TH PRINCIPAL MERIDIAN



From Florence, CO: From the intersection of Highway 115 and Highway 67 (S Robinson Ave),
Drive South on Highway 67 for ±1.8 miles to Proposed Access Road.
Turn Right and proceed West/Northwest for ±0.3 miles to proposed well location.

Total distance from Florence, CO to proposed well pad location is ±2.1 miles.

Legend

● Proposed Well Pad
 ---- Proposed Access Road
 --- Public Road

Reference Location

**** All Measurements are Made from
 Reference Well GROUPER 09-28 ****

Lat: 38.365983° Long: -105.110030° (NAD83)
 Elevation: 5298 Feet



Use our resources to find yours!
www.petro-fs.com
 (303) 928-7128

Field Date: 12/12/2012
 Drafting Date: 12/31/2012
 Drafter: GWB
 Revision:

Data Sources:
 - TOPO courtesy of USGS

Prepared for:

incremental
 OIL AND GAS
 LTD