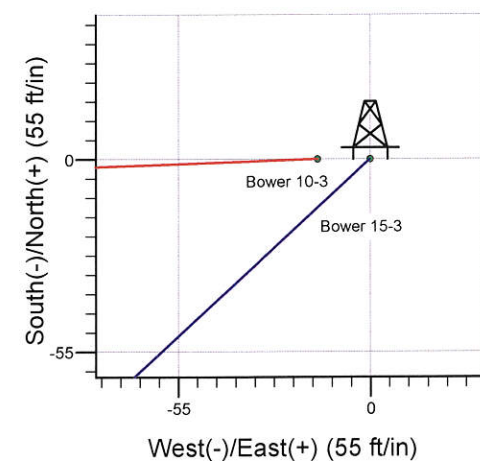
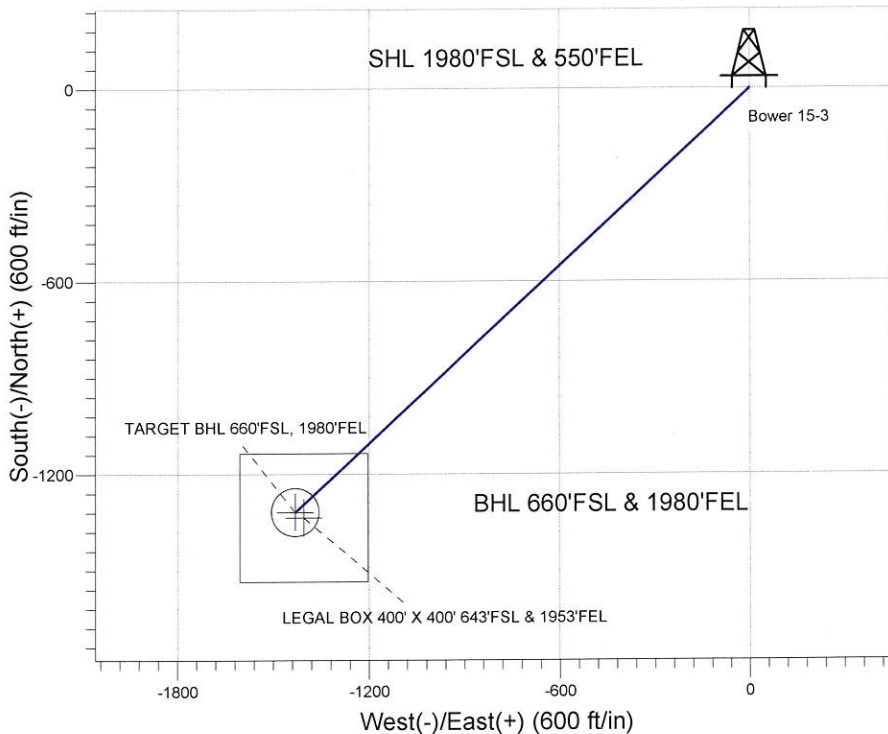
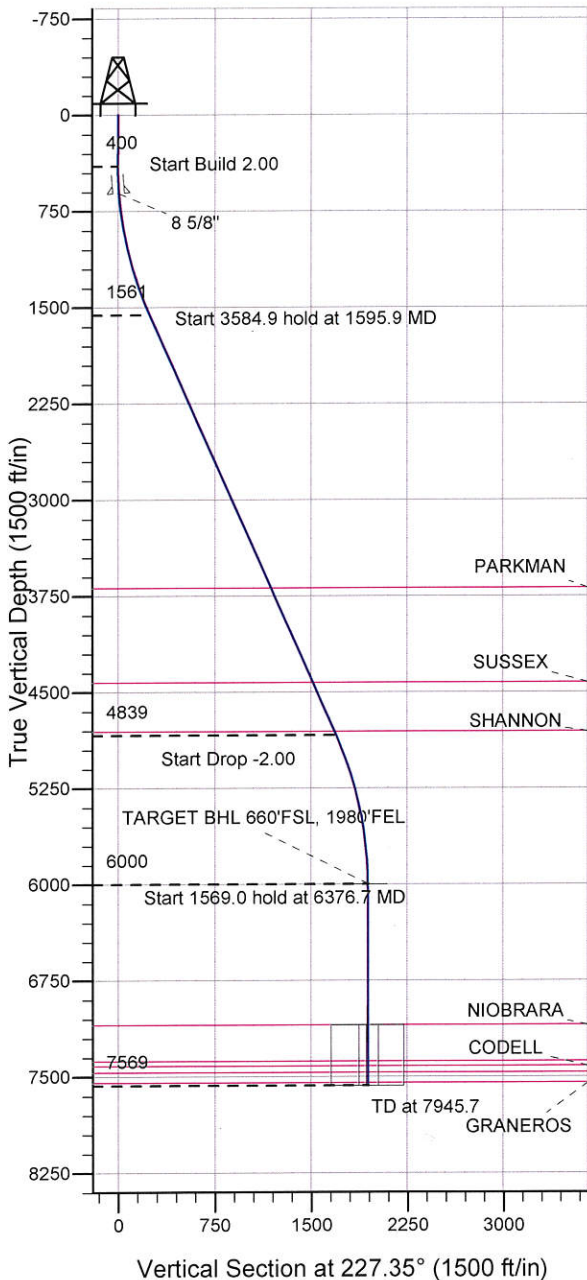


Surface Location: Bowers 2 Pad Sec.3-T6N-R67W
 North American Datum 1983 US State Plane 83 Colorado Northern Zone
 Ground Elevation: 4941.0
 +N/-S +E/-W Northing Easting Latitude Longitude Slot
 0.0 0.0 1430859.74 3174587.00 40.514414 -104.872075
 Original Well Elev WELL @ 4957.0ft (Original Well Elev)

BAYSWATER EXPLORATION & PRODUCTION



Bowers 2 Pad Sec.3-T6N-R67W
 Bower 15-3
 Plan #1 (9-24-12)



Azimuths to True North
 Magnetic North: 8.76°
 Magnetic Field
 Strength: 53044.1snT
 Dip Angle: 67.08°
 Date: 9/24/2012
 Model: IGRF2010

WELLBORE TARGET DETAILS (LAT/LONG)

Name	TVD	+N/-S	+E/-W	Latitude	Longitude	Shape
TARGET BHL 660'FSL, 1980'FEL	6000.0	-1318.1	-1430.9	40.510796	-104.877221	Point
LEGAL BOX 400' X 400' 643'FSL & 1953'FEL	7097.0	-1335.1	-1403.9	40.510749	-104.877124	Rectangle (Sides: L400.0 W400.0)
TARGET CIRCLE 660'FSL & 1980'FEL	7097.0	-1318.1	-1430.9	40.510796	-104.877221	Circle (Radius: 75.0)

SECTION DETAILS

Sec	MD	Inc	Azi	TVD	+N/-S	+E/-W	DLeg	TFace	VSec	Target
1	0.0	0.00	0.00	0.0	0.0	0.0	0.00	0.00	0.0	
2	400.0	0.00	0.00	400.0	0.0	0.0	0.00	0.00	0.0	
3	1595.9	23.92	227.35	1561.5	-166.7	-180.9	2.00	227.35	246.0	
4	5180.8	23.92	227.35	4838.5	-1151.4	-1250.0	0.00	0.00	1699.4	
5	6376.7	0.00	0.00	6000.0	-1318.1	-1430.9	2.00	180.00	1945.5	TARGET BHL 660'FSL, 1980'FEL
6	7945.7	0.00	0.00	7569.0	-1318.1	-1430.9	0.00	0.00	1945.5	



Directional

BAYSWATER EXPLORATION & PRODUCTION

SEC.3-T6N-R67W

Bowers 2 Pad Sec.3-T6N-R67W

Bower 15-3

Wellbore #1

Plan: Plan #1 (9-24-12)

Standard Planning Report

25 September, 2012

Database: Landmark
Company: BAYSWATER EXPLORATION & PRODUCTION
Project: SEC.3-T6N-R67W
Site: Bowers 2 Pad Sec.3-T6N-R67W
Well: Bower 15-3
Wellbore: Wellbore #1
Design: Plan #1 (9-24-12)

Local Co-ordinate Reference: Well Bower 15-3
TVD Reference: WELL @ 4957.0ft (Original Well Elev)
MD Reference: WELL @ 4957.0ft (Original Well Elev)
North Reference: True
Survey Calculation Method: Minimum Curvature

Project	SEC.3-T6N-R67W, Weld County, Colorado		
Map System:	US State Plane 1983	System Datum:	Mean Sea Level
Geo Datum:	North American Datum 1983		Using Well Reference Point
Map Zone:	Colorado Northern Zone		Using geodetic scale factor

Site	Bowers 2 Pad Sec.3-T6N-R67W				
Site Position:		Northing:	1,430,859.75 ft	Latitude:	40.514414
From:	Lat/Long	Easting:	3,174,587.00 ft	Longitude:	-104.872075
Position Uncertainty:	0.0 ft	Slot Radius:	"	Grid Convergence:	0.41 °

Well	Bower 15-3					
Well Position	+N/-S	0.0 ft	Northing:	1,430,859.74 ft	Latitude:	40.514414
	+E/-W	0.0 ft	Easting:	3,174,587.00 ft	Longitude:	-104.872075
Position Uncertainty		0.0 ft	Wellhead Elevation:	ft	Ground Level:	4,941.0 ft

Wellbore	Wellbore #1				
Magnetics	Model Name	Sample Date	Declination (°)	Dip Angle (°)	Field Strength (nT)
	IGRF2010	9/24/2012	8.76	67.08	53,044

Design	Plan #1 (9-24-12)			
Audit Notes:				
Version:	Phase:	PROTOTYPE	Tie On Depth:	0.0
Vertical Section:	Depth From (TVD) (ft)	+N/-S (ft)	+E/-W (ft)	Direction (°)
	0.0	0.0	0.0	227.35

Plan Sections										
Measured Depth (ft)	Inclination (°)	Azimuth (°)	Vertical Depth (ft)	+N/-S (ft)	+E/-W (ft)	Dogleg Rate (°/100ft)	Build Rate (°/100ft)	Turn Rate (°/100ft)	TFO (°)	Target
0.0	0.00	0.00	0.0	0.0	0.0	0.00	0.00	0.00	0.00	
400.0	0.00	0.00	400.0	0.0	0.0	0.00	0.00	0.00	0.00	
1,595.9	23.92	227.35	1,561.5	-166.7	-180.9	2.00	2.00	0.00	227.35	
5,180.8	23.92	227.35	4,838.5	-1,151.4	-1,250.0	0.00	0.00	0.00	0.00	
6,376.7	0.00	0.00	6,000.0	-1,318.1	-1,430.9	2.00	-2.00	0.00	180.00	TARGET BHL 660'I
7,945.7	0.00	0.00	7,569.0	-1,318.1	-1,430.9	0.00	0.00	0.00	0.00	

Database: Landmark
Company: BAYSWATER EXPLORATION & PRODUCTION
Project: SEC.3-T6N-R67W
Site: Bowers 2 Pad Sec.3-T6N-R67W
Well: Bower 15-3
Wellbore: Wellbore #1
Design: Plan #1 (9-24-12)

Local Co-ordinate Reference: Well Bower 15-3
TVD Reference: WELL @ 4957.0ft (Original Well Elev)
MD Reference: WELL @ 4957.0ft (Original Well Elev)
North Reference: True
Survey Calculation Method: Minimum Curvature

Planned Survey

Measured Depth (ft)	Inclination (°)	Azimuth (°)	Vertical Depth (ft)	+N/-S (ft)	+E/-W (ft)	Vertical Section (ft)	Dogleg Rate (°/100ft)	Build Rate (°/100ft)	Turn Rate (°/100ft)
0.0	0.00	0.00	0.0	0.0	0.0	0.0	0.00	0.00	0.00
40.0	0.00	0.00	40.0	0.0	0.0	0.0	0.00	0.00	0.00
80.0	0.00	0.00	80.0	0.0	0.0	0.0	0.00	0.00	0.00
120.0	0.00	0.00	120.0	0.0	0.0	0.0	0.00	0.00	0.00
160.0	0.00	0.00	160.0	0.0	0.0	0.0	0.00	0.00	0.00
200.0	0.00	0.00	200.0	0.0	0.0	0.0	0.00	0.00	0.00
240.0	0.00	0.00	240.0	0.0	0.0	0.0	0.00	0.00	0.00
280.0	0.00	0.00	280.0	0.0	0.0	0.0	0.00	0.00	0.00
320.0	0.00	0.00	320.0	0.0	0.0	0.0	0.00	0.00	0.00
360.0	0.00	0.00	360.0	0.0	0.0	0.0	0.00	0.00	0.00
400.0	0.00	0.00	400.0	0.0	0.0	0.0	0.00	0.00	0.00
440.0	0.80	227.35	440.0	-0.2	-0.2	0.3	2.00	2.00	0.00
480.0	1.60	227.35	480.0	-0.8	-0.8	1.1	2.00	2.00	0.00
520.0	2.40	227.35	520.0	-1.7	-1.8	2.5	2.00	2.00	0.00
560.0	3.20	227.35	559.9	-3.0	-3.3	4.5	2.00	2.00	0.00
600.0	4.00	227.35	599.8	-4.7	-5.1	7.0	2.00	2.00	0.00
610.2	4.20	227.35	610.0	-5.2	-5.7	7.7	2.00	2.00	0.00
8 5/8"									
640.0	4.80	227.35	639.7	-6.8	-7.4	10.0	2.00	2.00	0.00
680.0	5.60	227.35	679.6	-9.3	-10.1	13.7	2.00	2.00	0.00
720.0	6.40	227.35	719.3	-12.1	-13.1	17.9	2.00	2.00	0.00
760.0	7.20	227.35	759.1	-15.3	-16.6	22.6	2.00	2.00	0.00
800.0	8.00	227.35	798.7	-18.9	-20.5	27.9	2.00	2.00	0.00
840.0	8.80	227.35	838.3	-22.8	-24.8	33.7	2.00	2.00	0.00
880.0	9.60	227.35	877.8	-27.2	-29.5	40.1	2.00	2.00	0.00
920.0	10.40	227.35	917.1	-31.9	-34.6	47.1	2.00	2.00	0.00
960.0	11.20	227.35	956.4	-37.0	-40.1	54.6	2.00	2.00	0.00
1,000.0	12.00	227.35	995.6	-42.4	-46.0	62.6	2.00	2.00	0.00
1,040.0	12.80	227.35	1,034.7	-48.2	-52.4	71.2	2.00	2.00	0.00
1,080.0	13.60	227.35	1,073.6	-54.4	-59.1	80.3	2.00	2.00	0.00
1,120.0	14.40	227.35	1,112.4	-61.0	-66.2	90.0	2.00	2.00	0.00
1,160.0	15.20	227.35	1,151.1	-67.9	-73.7	100.2	2.00	2.00	0.00
1,200.0	16.00	227.35	1,189.6	-75.2	-81.6	111.0	2.00	2.00	0.00
1,240.0	16.80	227.35	1,228.0	-82.8	-89.9	122.3	2.00	2.00	0.00
1,280.0	17.60	227.35	1,266.2	-90.9	-98.6	134.1	2.00	2.00	0.00
1,320.0	18.40	227.35	1,304.3	-99.2	-107.7	146.5	2.00	2.00	0.00
1,360.0	19.20	227.35	1,342.1	-108.0	-117.2	159.3	2.00	2.00	0.00
1,400.0	20.00	227.35	1,379.8	-117.1	-127.1	172.8	2.00	2.00	0.00
1,440.0	20.80	227.35	1,417.3	-126.5	-137.3	186.7	2.00	2.00	0.00
1,480.0	21.60	227.35	1,454.6	-136.3	-148.0	201.2	2.00	2.00	0.00
1,520.0	22.40	227.35	1,491.7	-146.4	-159.0	216.2	2.00	2.00	0.00
1,560.0	23.20	227.35	1,528.6	-157.0	-170.4	231.7	2.00	2.00	0.00
1,595.9	23.92	227.35	1,561.5	-166.7	-180.9	246.0	2.00	2.00	0.00
1,600.0	23.92	227.35	1,565.2	-167.8	-182.2	247.7	0.00	0.00	0.00
1,640.0	23.92	227.35	1,601.8	-178.8	-194.1	263.9	0.00	0.00	0.00
1,680.0	23.92	227.35	1,638.3	-189.8	-206.0	280.1	0.00	0.00	0.00
1,720.0	23.92	227.35	1,674.9	-200.8	-218.0	296.3	0.00	0.00	0.00
1,760.0	23.92	227.35	1,711.5	-211.7	-229.9	312.5	0.00	0.00	0.00
1,800.0	23.92	227.35	1,748.0	-222.7	-241.8	328.8	0.00	0.00	0.00
1,840.0	23.92	227.35	1,784.6	-233.7	-253.7	345.0	0.00	0.00	0.00
1,880.0	23.92	227.35	1,821.2	-244.7	-265.7	361.2	0.00	0.00	0.00
1,920.0	23.92	227.35	1,857.7	-255.7	-277.6	377.4	0.00	0.00	0.00
1,960.0	23.92	227.35	1,894.3	-266.7	-289.5	393.6	0.00	0.00	0.00

Database:	Landmark	Local Co-ordinate Reference:	Well Bower 15-3
Company:	BAYSWATER EXPLORATION & PRODUCTION	TVD Reference:	WELL @ 4957.0ft (Original Well Elev)
Project:	SEC.3-T6N-R67W	MD Reference:	WELL @ 4957.0ft (Original Well Elev)
Site:	Bowers 2 Pad Sec.3-T6N-R67W	North Reference:	True
Well:	Bower 15-3	Survey Calculation Method:	Minimum Curvature
Wellbore:	Wellbore #1		
Design:	Plan #1 (9-24-12)		

Planned Survey

Measured Depth (ft)	Inclination (°)	Azimuth (°)	Vertical Depth (ft)	+N/-S (ft)	+E/-W (ft)	Vertical Section (ft)	Dogleg Rate (°/100ft)	Build Rate (°/100ft)	Turn Rate (°/100ft)
2,000.0	23.92	227.35	1,930.9	-277.7	-301.4	409.8	0.00	0.00	0.00
2,040.0	23.92	227.35	1,967.4	-288.7	-313.4	426.1	0.00	0.00	0.00
2,080.0	23.92	227.35	2,004.0	-299.6	-325.3	442.3	0.00	0.00	0.00
2,120.0	23.92	227.35	2,040.6	-310.6	-337.2	458.5	0.00	0.00	0.00
2,160.0	23.92	227.35	2,077.1	-321.6	-349.2	474.7	0.00	0.00	0.00
2,200.0	23.92	227.35	2,113.7	-332.6	-361.1	490.9	0.00	0.00	0.00
2,240.0	23.92	227.35	2,150.3	-343.6	-373.0	507.1	0.00	0.00	0.00
2,280.0	23.92	227.35	2,186.8	-354.6	-384.9	523.4	0.00	0.00	0.00
2,320.0	23.92	227.35	2,223.4	-365.6	-396.9	539.6	0.00	0.00	0.00
2,360.0	23.92	227.35	2,260.0	-376.6	-408.8	555.8	0.00	0.00	0.00
2,400.0	23.92	227.35	2,296.5	-387.5	-420.7	572.0	0.00	0.00	0.00
2,440.0	23.92	227.35	2,333.1	-398.5	-432.7	588.2	0.00	0.00	0.00
2,480.0	23.92	227.35	2,369.6	-409.5	-444.6	604.5	0.00	0.00	0.00
2,520.0	23.92	227.35	2,406.2	-420.5	-456.5	620.7	0.00	0.00	0.00
2,560.0	23.92	227.35	2,442.8	-431.5	-468.4	636.9	0.00	0.00	0.00
2,600.0	23.92	227.35	2,479.3	-442.5	-480.4	653.1	0.00	0.00	0.00
2,640.0	23.92	227.35	2,515.9	-453.5	-492.3	669.3	0.00	0.00	0.00
2,680.0	23.92	227.35	2,552.5	-464.5	-504.2	685.5	0.00	0.00	0.00
2,720.0	23.92	227.35	2,589.0	-475.4	-516.2	701.8	0.00	0.00	0.00
2,760.0	23.92	227.35	2,625.6	-486.4	-528.1	718.0	0.00	0.00	0.00
2,800.0	23.92	227.35	2,662.2	-497.4	-540.0	734.2	0.00	0.00	0.00
2,840.0	23.92	227.35	2,698.7	-508.4	-551.9	750.4	0.00	0.00	0.00
2,880.0	23.92	227.35	2,735.3	-519.4	-563.9	766.6	0.00	0.00	0.00
2,920.0	23.92	227.35	2,771.9	-530.4	-575.8	782.8	0.00	0.00	0.00
2,960.0	23.92	227.35	2,808.4	-541.4	-587.7	799.1	0.00	0.00	0.00
3,000.0	23.92	227.35	2,845.0	-552.4	-599.7	815.3	0.00	0.00	0.00
3,040.0	23.92	227.35	2,881.6	-563.3	-611.6	831.5	0.00	0.00	0.00
3,080.0	23.92	227.35	2,918.1	-574.3	-623.5	847.7	0.00	0.00	0.00
3,120.0	23.92	227.35	2,954.7	-585.3	-635.4	863.9	0.00	0.00	0.00
3,160.0	23.92	227.35	2,991.3	-596.3	-647.4	880.1	0.00	0.00	0.00
3,200.0	23.92	227.35	3,027.8	-607.3	-659.3	896.4	0.00	0.00	0.00
3,240.0	23.92	227.35	3,064.4	-618.3	-671.2	912.6	0.00	0.00	0.00
3,280.0	23.92	227.35	3,100.9	-629.3	-683.1	928.8	0.00	0.00	0.00
3,320.0	23.92	227.35	3,137.5	-640.3	-695.1	945.0	0.00	0.00	0.00
3,360.0	23.92	227.35	3,174.1	-651.2	-707.0	961.2	0.00	0.00	0.00
3,400.0	23.92	227.35	3,210.6	-662.2	-718.9	977.4	0.00	0.00	0.00
3,440.0	23.92	227.35	3,247.2	-673.2	-730.9	993.7	0.00	0.00	0.00
3,480.0	23.92	227.35	3,283.8	-684.2	-742.8	1,009.9	0.00	0.00	0.00
3,520.0	23.92	227.35	3,320.3	-695.2	-754.7	1,026.1	0.00	0.00	0.00
3,560.0	23.92	227.35	3,356.9	-706.2	-766.6	1,042.3	0.00	0.00	0.00
3,600.0	23.92	227.35	3,393.5	-717.2	-778.6	1,058.5	0.00	0.00	0.00
3,640.0	23.92	227.35	3,430.0	-728.1	-790.5	1,074.8	0.00	0.00	0.00
3,680.0	23.92	227.35	3,466.6	-739.1	-802.4	1,091.0	0.00	0.00	0.00
3,720.0	23.92	227.35	3,503.2	-750.1	-814.4	1,107.2	0.00	0.00	0.00
3,760.0	23.92	227.35	3,539.7	-761.1	-826.3	1,123.4	0.00	0.00	0.00
3,800.0	23.92	227.35	3,576.3	-772.1	-838.2	1,139.6	0.00	0.00	0.00
3,840.0	23.92	227.35	3,612.9	-783.1	-850.1	1,155.8	0.00	0.00	0.00
3,880.0	23.92	227.35	3,649.4	-794.1	-862.1	1,172.1	0.00	0.00	0.00
3,920.0	23.92	227.35	3,686.0	-805.1	-874.0	1,188.3	0.00	0.00	0.00
3,921.1	23.92	227.35	3,687.0	-805.4	-874.3	1,188.7	0.00	0.00	0.00
PARKMAN									
3,960.0	23.92	227.35	3,722.6	-816.0	-885.9	1,204.5	0.00	0.00	0.00
4,000.0	23.92	227.35	3,759.1	-827.0	-897.9	1,220.7	0.00	0.00	0.00

Database:	Landmark	Local Co-ordinate Reference:	Well Bower 15-3
Company:	BAYSWATER EXPLORATION & PRODUCTION	TVD Reference:	WELL @ 4957.0ft (Original Well Elev)
Project:	SEC.3-T6N-R67W	MD Reference:	WELL @ 4957.0ft (Original Well Elev)
Site:	Bowers 2 Pad Sec.3-T6N-R67W	North Reference:	True
Well:	Bower 15-3	Survey Calculation Method:	Minimum Curvature
Wellbore:	Wellbore #1		
Design:	Plan #1 (9-24-12)		

Planned Survey

Measured Depth (ft)	Inclination (°)	Azimuth (°)	Vertical Depth (ft)	+N/-S (ft)	+E/-W (ft)	Vertical Section (ft)	Dogleg Rate (°/100ft)	Build Rate (°/100ft)	Turn Rate (°/100ft)
4,040.0	23.92	227.35	3,795.7	-838.0	-909.8	1,236.9	0.00	0.00	0.00
4,080.0	23.92	227.35	3,832.2	-849.0	-921.7	1,253.1	0.00	0.00	0.00
4,120.0	23.92	227.35	3,868.8	-860.0	-933.6	1,269.4	0.00	0.00	0.00
4,160.0	23.92	227.35	3,905.4	-871.0	-945.6	1,285.6	0.00	0.00	0.00
4,200.0	23.92	227.35	3,941.9	-882.0	-957.5	1,301.8	0.00	0.00	0.00
4,240.0	23.92	227.35	3,978.5	-893.0	-969.4	1,318.0	0.00	0.00	0.00
4,280.0	23.92	227.35	4,015.1	-903.9	-981.4	1,334.2	0.00	0.00	0.00
4,320.0	23.92	227.35	4,051.6	-914.9	-993.3	1,350.4	0.00	0.00	0.00
4,360.0	23.92	227.35	4,088.2	-925.9	-1,005.2	1,366.7	0.00	0.00	0.00
4,400.0	23.92	227.35	4,124.8	-936.9	-1,017.1	1,382.9	0.00	0.00	0.00
4,440.0	23.92	227.35	4,161.3	-947.9	-1,029.1	1,399.1	0.00	0.00	0.00
4,480.0	23.92	227.35	4,197.9	-958.9	-1,041.0	1,415.3	0.00	0.00	0.00
4,520.0	23.92	227.35	4,234.5	-969.9	-1,052.9	1,431.5	0.00	0.00	0.00
4,560.0	23.92	227.35	4,271.0	-980.9	-1,064.8	1,447.8	0.00	0.00	0.00
4,600.0	23.92	227.35	4,307.6	-991.8	-1,076.8	1,464.0	0.00	0.00	0.00
4,640.0	23.92	227.35	4,344.2	-1,002.8	-1,088.7	1,480.2	0.00	0.00	0.00
4,680.0	23.92	227.35	4,380.7	-1,013.8	-1,100.6	1,496.4	0.00	0.00	0.00
4,720.0	23.92	227.35	4,417.3	-1,024.8	-1,112.6	1,512.6	0.00	0.00	0.00
4,728.4	23.92	227.35	4,425.0	-1,027.1	-1,115.1	1,516.0	0.00	0.00	0.00
SUSSEX									
4,760.0	23.92	227.35	4,453.9	-1,035.8	-1,124.5	1,528.8	0.00	0.00	0.00
4,800.0	23.92	227.35	4,490.4	-1,046.8	-1,136.4	1,545.1	0.00	0.00	0.00
4,840.0	23.92	227.35	4,527.0	-1,057.8	-1,148.3	1,561.3	0.00	0.00	0.00
4,880.0	23.92	227.35	4,563.5	-1,068.8	-1,160.3	1,577.5	0.00	0.00	0.00
4,920.0	23.92	227.35	4,600.1	-1,079.7	-1,172.2	1,593.7	0.00	0.00	0.00
4,960.0	23.92	227.35	4,636.7	-1,090.7	-1,184.1	1,609.9	0.00	0.00	0.00
5,000.0	23.92	227.35	4,673.2	-1,101.7	-1,196.1	1,626.1	0.00	0.00	0.00
5,040.0	23.92	227.35	4,709.8	-1,112.7	-1,208.0	1,642.4	0.00	0.00	0.00
5,080.0	23.92	227.35	4,746.4	-1,123.7	-1,219.9	1,658.6	0.00	0.00	0.00
5,120.0	23.92	227.35	4,782.9	-1,134.7	-1,231.8	1,674.8	0.00	0.00	0.00
5,146.3	23.92	227.35	4,807.0	-1,141.9	-1,239.7	1,685.5	0.00	0.00	0.00
SHANNON									
5,160.0	23.92	227.35	4,819.5	-1,145.7	-1,243.8	1,691.0	0.00	0.00	0.00
5,180.8	23.92	227.35	4,838.5	-1,151.4	-1,250.0	1,699.4	0.00	0.00	0.00
5,200.0	23.53	227.35	4,856.1	-1,156.6	-1,255.7	1,707.2	2.00	-2.00	0.00
5,240.0	22.73	227.35	4,892.9	-1,167.3	-1,267.2	1,722.9	2.00	-2.00	0.00
5,280.0	21.93	227.35	4,929.9	-1,177.6	-1,278.4	1,738.1	2.00	-2.00	0.00
5,320.0	21.13	227.35	4,967.1	-1,187.5	-1,289.2	1,752.8	2.00	-2.00	0.00
5,360.0	20.33	227.35	5,004.5	-1,197.1	-1,299.6	1,766.9	2.00	-2.00	0.00
5,400.0	19.53	227.35	5,042.1	-1,206.3	-1,309.6	1,780.6	2.00	-2.00	0.00
5,440.0	18.73	227.35	5,079.9	-1,215.2	-1,319.3	1,793.7	2.00	-2.00	0.00
5,480.0	17.93	227.35	5,117.9	-1,223.7	-1,328.5	1,806.3	2.00	-2.00	0.00
5,520.0	17.13	227.35	5,156.0	-1,231.9	-1,337.4	1,818.3	2.00	-2.00	0.00
5,560.0	16.33	227.35	5,194.3	-1,239.7	-1,345.9	1,829.8	2.00	-2.00	0.00
5,600.0	15.53	227.35	5,232.8	-1,247.2	-1,353.9	1,840.8	2.00	-2.00	0.00
5,640.0	14.73	227.35	5,271.4	-1,254.2	-1,361.6	1,851.3	2.00	-2.00	0.00
5,680.0	13.93	227.35	5,310.1	-1,260.9	-1,368.9	1,861.2	2.00	-2.00	0.00
5,720.0	13.13	227.35	5,349.0	-1,267.3	-1,375.8	1,870.5	2.00	-2.00	0.00
5,760.0	12.33	227.35	5,388.0	-1,273.3	-1,382.3	1,879.3	2.00	-2.00	0.00
5,800.0	11.53	227.35	5,427.2	-1,278.9	-1,388.4	1,887.6	2.00	-2.00	0.00
5,840.0	10.73	227.35	5,466.4	-1,284.1	-1,394.0	1,895.3	2.00	-2.00	0.00
5,880.0	9.93	227.35	5,505.8	-1,289.0	-1,399.3	1,902.5	2.00	-2.00	0.00
5,920.0	9.13	227.35	5,545.2	-1,293.4	-1,404.2	1,909.1	2.00	-2.00	0.00

Database:	Landmark	Local Co-ordinate Reference:	Well Bower 15-3
Company:	BAYSWATER EXPLORATION & PRODUCTION	TVD Reference:	WELL @ 4957.0ft (Original Well Elev)
Project:	SEC.3-T6N-R67W	MD Reference:	WELL @ 4957.0ft (Original Well Elev)
Site:	Bowers 2 Pad Sec.3-T6N-R67W	North Reference:	True
Well:	Bower 15-3	Survey Calculation Method:	Minimum Curvature
Wellbore:	Wellbore #1		
Design:	Plan #1 (9-24-12)		

Planned Survey

Measured Depth (ft)	Inclination (°)	Azimuth (°)	Vertical Depth (ft)	+N/-S (ft)	+E/-W (ft)	Vertical Section (ft)	Dogleg Rate (°/100ft)	Build Rate (°/100ft)	Turn Rate (°/100ft)
5,960.0	8.33	227.35	5,584.7	-1,297.6	-1,408.7	1,915.2	2.00	-2.00	0.00
6,000.0	7.53	227.35	5,624.4	-1,301.3	-1,412.7	1,920.7	2.00	-2.00	0.00
6,040.0	6.73	227.35	5,664.1	-1,304.7	-1,416.4	1,925.7	2.00	-2.00	0.00
6,080.0	5.93	227.35	5,703.8	-1,307.7	-1,419.6	1,930.1	2.00	-2.00	0.00
6,120.0	5.13	227.35	5,743.6	-1,310.3	-1,422.5	1,934.0	2.00	-2.00	0.00
6,160.0	4.33	227.35	5,783.5	-1,312.5	-1,424.9	1,937.3	2.00	-2.00	0.00
6,200.0	3.53	227.35	5,823.4	-1,314.4	-1,426.9	1,940.0	2.00	-2.00	0.00
6,240.0	2.73	227.35	5,863.3	-1,315.8	-1,428.5	1,942.2	2.00	-2.00	0.00
6,280.0	1.93	227.35	5,903.3	-1,317.0	-1,429.7	1,943.8	2.00	-2.00	0.00
6,320.0	1.13	227.35	5,943.3	-1,317.7	-1,430.5	1,944.9	2.00	-2.00	0.00
6,360.0	0.33	227.35	5,983.3	-1,318.0	-1,430.9	1,945.4	2.00	-2.00	0.00
6,376.7	0.00	0.00	6,000.0	-1,318.1	-1,430.9	1,945.5	2.00	-2.00	0.00
6,400.0	0.00	0.00	6,023.3	-1,318.1	-1,430.9	1,945.5	0.00	0.00	0.00
6,440.0	0.00	0.00	6,063.3	-1,318.1	-1,430.9	1,945.5	0.00	0.00	0.00
6,480.0	0.00	0.00	6,103.3	-1,318.1	-1,430.9	1,945.5	0.00	0.00	0.00
6,520.0	0.00	0.00	6,143.3	-1,318.1	-1,430.9	1,945.5	0.00	0.00	0.00
6,560.0	0.00	0.00	6,183.3	-1,318.1	-1,430.9	1,945.5	0.00	0.00	0.00
6,600.0	0.00	0.00	6,223.3	-1,318.1	-1,430.9	1,945.5	0.00	0.00	0.00
6,640.0	0.00	0.00	6,263.3	-1,318.1	-1,430.9	1,945.5	0.00	0.00	0.00
6,680.0	0.00	0.00	6,303.3	-1,318.1	-1,430.9	1,945.5	0.00	0.00	0.00
6,720.0	0.00	0.00	6,343.3	-1,318.1	-1,430.9	1,945.5	0.00	0.00	0.00
6,760.0	0.00	0.00	6,383.3	-1,318.1	-1,430.9	1,945.5	0.00	0.00	0.00
6,800.0	0.00	0.00	6,423.3	-1,318.1	-1,430.9	1,945.5	0.00	0.00	0.00
6,840.0	0.00	0.00	6,463.3	-1,318.1	-1,430.9	1,945.5	0.00	0.00	0.00
6,880.0	0.00	0.00	6,503.3	-1,318.1	-1,430.9	1,945.5	0.00	0.00	0.00
6,920.0	0.00	0.00	6,543.3	-1,318.1	-1,430.9	1,945.5	0.00	0.00	0.00
6,960.0	0.00	0.00	6,583.3	-1,318.1	-1,430.9	1,945.5	0.00	0.00	0.00
7,000.0	0.00	0.00	6,623.3	-1,318.1	-1,430.9	1,945.5	0.00	0.00	0.00
7,040.0	0.00	0.00	6,663.3	-1,318.1	-1,430.9	1,945.5	0.00	0.00	0.00
7,080.0	0.00	0.00	6,703.3	-1,318.1	-1,430.9	1,945.5	0.00	0.00	0.00
7,120.0	0.00	0.00	6,743.3	-1,318.1	-1,430.9	1,945.5	0.00	0.00	0.00
7,160.0	0.00	0.00	6,783.3	-1,318.1	-1,430.9	1,945.5	0.00	0.00	0.00
7,200.0	0.00	0.00	6,823.3	-1,318.1	-1,430.9	1,945.5	0.00	0.00	0.00
7,240.0	0.00	0.00	6,863.3	-1,318.1	-1,430.9	1,945.5	0.00	0.00	0.00
7,280.0	0.00	0.00	6,903.3	-1,318.1	-1,430.9	1,945.5	0.00	0.00	0.00
7,320.0	0.00	0.00	6,943.3	-1,318.1	-1,430.9	1,945.5	0.00	0.00	0.00
7,360.0	0.00	0.00	6,983.3	-1,318.1	-1,430.9	1,945.5	0.00	0.00	0.00
7,400.0	0.00	0.00	7,023.3	-1,318.1	-1,430.9	1,945.5	0.00	0.00	0.00
7,440.0	0.00	0.00	7,063.3	-1,318.1	-1,430.9	1,945.5	0.00	0.00	0.00
7,473.7	0.00	0.00	7,097.0	-1,318.1	-1,430.9	1,945.5	0.00	0.00	0.00
NIOBRARA									
7,480.0	0.00	0.00	7,103.3	-1,318.1	-1,430.9	1,945.5	0.00	0.00	0.00
7,520.0	0.00	0.00	7,143.3	-1,318.1	-1,430.9	1,945.5	0.00	0.00	0.00
7,560.0	0.00	0.00	7,183.3	-1,318.1	-1,430.9	1,945.5	0.00	0.00	0.00
7,600.0	0.00	0.00	7,223.3	-1,318.1	-1,430.9	1,945.5	0.00	0.00	0.00
7,640.0	0.00	0.00	7,263.3	-1,318.1	-1,430.9	1,945.5	0.00	0.00	0.00
7,680.0	0.00	0.00	7,303.3	-1,318.1	-1,430.9	1,945.5	0.00	0.00	0.00
7,720.0	0.00	0.00	7,343.3	-1,318.1	-1,430.9	1,945.5	0.00	0.00	0.00
7,755.7	0.00	0.00	7,379.0	-1,318.1	-1,430.9	1,945.5	0.00	0.00	0.00
FORT HAYS									
7,760.0	0.00	0.00	7,383.3	-1,318.1	-1,430.9	1,945.5	0.00	0.00	0.00
7,793.7	0.00	0.00	7,417.0	-1,318.1	-1,430.9	1,945.5	0.00	0.00	0.00
CODELL									

Database: Landmark
Company: BAYSWATER EXPLORATION & PRODUCTION
Project: SEC.3-T6N-R67W
Site: Bowers 2 Pad Sec.3-T6N-R67W
Well: Bower 15-3
Wellbore: Wellbore #1
Design: Plan #1 (9-24-12)

Local Co-ordinate Reference: Well Bower 15-3
TVD Reference: WELL @ 4957.0ft (Original Well Elev)
MD Reference: WELL @ 4957.0ft (Original Well Elev)
North Reference: True
Survey Calculation Method: Minimum Curvature

Planned Survey

Measured Depth (ft)	Inclination (°)	Azimuth (°)	Vertical Depth (ft)	+N/-S (ft)	+E/-W (ft)	Vertical Section (ft)	Dogleg Rate (°/100ft)	Build Rate (°/100ft)	Turn Rate (°/100ft)
7,800.0	0.00	0.00	7,423.3	-1,318.1	-1,430.9	1,945.5	0.00	0.00	0.00
7,840.0	0.00	0.00	7,463.3	-1,318.1	-1,430.9	1,945.5	0.00	0.00	0.00
7,843.7	0.00	0.00	7,467.0	-1,318.1	-1,430.9	1,945.5	0.00	0.00	0.00
GREENHORN									
7,880.0	0.00	0.00	7,503.3	-1,318.1	-1,430.9	1,945.5	0.00	0.00	0.00
7,920.0	0.00	0.00	7,543.3	-1,318.1	-1,430.9	1,945.5	0.00	0.00	0.00
7,925.7	0.00	0.00	7,549.0	-1,318.1	-1,430.9	1,945.5	0.00	0.00	0.00
GRANEROS									
7,945.7	0.00	0.00	7,569.0	-1,318.1	-1,430.9	1,945.5	0.00	0.00	0.00

Casing Points

Measured Depth (ft)	Vertical Depth (ft)	Name	Casing Diameter (")	Hole Diameter (")
610.2	610.0	8 5/8"	8-5/8	12-1/4

Formations

Measured Depth (ft)	Vertical Depth (ft)	Name	Lithology	Dip (°)	Dip Direction (°)
3,921.1	3,687.0	PARKMAN		0.00	
4,728.4	4,425.0	SUSSEX		0.00	
5,146.3	4,807.0	SHANNON		0.00	
7,473.7	7,097.0	NIOBRARA		0.00	
7,755.7	7,379.0	FORT HAYS		0.00	
7,793.7	7,417.0	CODELL		0.00	
7,843.7	7,467.0	GREENHORN		0.00	
7,925.7	7,549.0	GRANEROS		0.00	



Directional

BAYSWATER EXPLORATION & PRODUCTION

SEC.3-T6N-R67W

Bowers 2 Pad Sec.3-T6N-R67W

Bower 15-3

Wellbore #1

Plan #1 (9-24-12)

Anticollision Report

25 September, 2012

Company: BAYSWATER EXPLORATION & PRODUCTION
Project: SEC.3-T6N-R67W
Reference Site: Bowers 2 Pad Sec.3-T6N-R67W
Site Error: 0.0ft
Reference Well: Bower 15-3
Well Error: 0.0ft
Reference Wellbore: Wellbore #1
Reference Design: Plan #1 (9-24-12)

Local Co-ordinate Reference: Well Bower 15-3
TVD Reference: WELL @ 4957.0ft (Original Well Elev)
MD Reference: WELL @ 4957.0ft (Original Well Elev)
North Reference: True
Survey Calculation Method: Minimum Curvature
Output errors are at: 2.00 sigma
Database: Landmark
Offset TVD Reference: Offset Datum

Reference Plan #1 (9-24-12)

Filter type: NO GLOBAL FILTER: Using user defined selection & filtering criteria
Interpolation Method: Stations
Depth Range: Unlimited
Results Limited by: Maximum center-center distance of 10,000.0ft
Warning Levels Evaluated at: 2.00 Sigma

Error Model: ISCWSA
Scan Method: Closest Approach 3D
Error Surface: Elliptical Conic

Survey Tool Program Date 9/25/2012

From (ft)	To (ft)	Survey (Wellbore)	Tool Name	Description
0.0	7,945.7	Plan #1 (9-24-12) (Wellbore #1)	MWD	MWD - Standard

Summary

Site Name	Reference Measured Depth (ft)	Offset Measured Depth (ft)	Distance Between Centres (ft)	Distance Between Ellipses (ft)	Separation Factor	Warning
Offset Well - Wellbore - Design						
Bowers 2 Pad Sec.3-T6N-R67W						
Bower 10-3 - Wellbore #1 - Plan #1 (9-24-12)	166.3	167.3	15.0	14.5	28.589 CC	
Bower 10-3 - Wellbore #1 - Plan #1 (9-24-12)	200.0	201.0	15.0	14.3	22.197 ES	
Bower 10-3 - Wellbore #1 - Plan #1 (9-24-12)	400.0	400.0	22.0	20.5	14.108 SF	

Offset Design

Bowers 2 Pad Sec.3-T6N-R67W - Bower 10-3 - Wellbore #1 - Plan #1 (9-24-12)

Survey Program: 0-MWD

Offset Site Error: 0.0ft

Offset Well Error: 0.0ft

Reference		Offset		Semi Major Axis			Distance							Warning
Measured Depth (ft)	Vertical Depth (ft)	Measured Depth (ft)	Vertical Depth (ft)	Reference (ft)	Offset (ft)	Highside Toolface (°)	Offset Wellbore Centre +N/-S (ft)	Offset Wellbore Centre +E/-W (ft)	Between Centres (ft)	Between Ellipses (ft)	Minimum Separation (ft)	Separation Factor		
0.0	0.0	1.0	1.0	0.0	0.0	-90.03	0.0	-15.0	15.0	15.0	0.00	N/A		
100.0	100.0	101.0	101.0	0.1	0.1	-90.03	0.0	-15.0	15.0	14.8	0.23	66.140		
166.3	166.3	167.3	167.3	0.3	0.3	-90.03	0.0	-15.0	15.0	14.5	0.53	28.589 CC		
200.0	200.0	201.0	201.0	0.3	0.3	-90.03	0.0	-15.0	15.0	14.3	0.68	22.197 ES		
300.0	300.0	300.4	300.4	0.6	0.6	-90.24	-0.1	-16.8	16.8	15.7	1.11	15.056		
400.0	400.0	400.0	399.8	0.8	0.8	-90.67	-0.3	-22.0	22.0	20.5	1.56	14.108 SF		
500.0	500.0	498.5	497.9	1.0	1.0	43.73	-0.6	-30.5	29.4	27.4	1.99	14.817		
600.0	599.8	596.9	595.7	1.2	1.3	48.03	-1.0	-42.5	37.9	35.4	2.41	15.700		
700.0	699.5	694.9	692.5	1.4	1.6	53.15	-1.5	-57.6	47.7	44.8	2.88	16.570		
800.0	798.7	792.4	788.2	1.7	2.0	58.29	-2.2	-76.0	59.1	55.7	3.40	17.382		
900.0	897.5	889.3	882.6	2.0	2.4	63.05	-3.0	-97.5	72.4	68.4	4.01	18.067		
1,000.0	995.6	985.5	975.7	2.4	2.9	67.29	-3.8	-122.0	87.7	83.0	4.72	18.588		
1,100.0	1,093.1	1,083.1	1,069.4	2.8	3.5	71.31	-4.8	-149.1	104.4	98.8	5.55	18.798		
1,200.0	1,189.6	1,181.3	1,163.7	3.3	4.0	75.71	-5.8	-176.6	120.7	114.2	6.52	18.523		
1,300.0	1,285.3	1,279.3	1,257.8	3.8	4.6	80.40	-6.8	-204.0	137.0	129.4	7.61	18.004		
1,400.0	1,379.8	1,377.0	1,351.6	4.4	5.2	85.27	-7.7	-231.4	153.9	145.1	8.83	17.435		
1,500.0	1,473.2	1,474.2	1,444.9	5.1	5.8	90.21	-8.7	-258.6	171.7	161.6	10.14	16.943		
1,595.9	1,561.5	1,567.0	1,533.9	5.9	6.3	94.94	-9.6	-284.5	190.3	178.8	11.46	16.609		
1,600.0	1,565.2	1,570.9	1,537.7	5.9	6.3	95.15	-9.7	-285.6	191.1	179.6	11.51	16.598		
1,700.0	1,656.6	1,667.3	1,630.2	6.7	6.9	99.90	-10.7	-312.6	212.0	199.1	12.90	16.432		
1,800.0	1,748.0	1,763.6	1,722.8	7.5	7.5	103.79	-11.6	-339.6	234.1	219.9	14.26	16.421		
1,900.0	1,839.5	1,860.0	1,815.3	8.3	8.0	107.01	-12.6	-366.5	257.1	241.5	15.58	16.501		
2,000.0	1,930.9	1,956.4	1,907.8	9.1	8.6	109.71	-13.5	-393.5	280.7	263.9	16.88	16.632		

CC - Min centre to center distance or convergent point, SF - min separation factor, ES - min ellipse separation

Company: BAYSWATER EXPLORATION & PRODUCTION
 Project: SEC.3-T6N-R67W
 Reference Site: Bowers 2 Pad Sec.3-T6N-R67W
 Site Error: 0.0ft
 Reference Well: Bower 15-3
 Well Error: 0.0ft
 Reference Wellbore: Wellbore #1
 Reference Design: Plan #1 (9-24-12)

Local Co-ordinate Reference: Well Bower 15-3
 TVD Reference: WELL @ 4957.0ft (Original Well Elev)
 MD Reference: WELL @ 4957.0ft (Original Well Elev)
 North Reference: True
 Survey Calculation Method: Minimum Curvature
 Output errors are at 2.00 sigma
 Database: Landmark
 Offset TVD Reference: Offset Datum

Offset Design Bowers 2 Pad Sec.3-T6N-R67W - Bower 10-3 - Wellbore #1 - Plan #1 (9-24-12)														Offset Site Error:	0.0 ft
Survey Program: 0-MWD														Offset Well Error:	0.0 ft
Measured Depth (ft)	Vertical Depth (ft)	Measured Depth (ft)	Vertical Depth (ft)	Reference (ft)	Offset (ft)	Highside Toolface (°)	Offset Wellbore Centre +N/-S (ft)	+E/-W (ft)	Between Centres (ft)	Between Ellipses (ft)	Minimum Separation (ft)	Separation Factor	Warning		
2,100.0	2,022.3	2,052.8	2,000.3	10.0	9.2	111.99	-14.5	-420.5	304.9	286.7	18.16	16.790			
2,200.0	2,113.7	2,149.1	2,092.8	10.8	9.8	113.94	-15.5	-447.4	329.4	310.0	19.42	16.961			
2,300.0	2,205.1	2,245.5	2,185.4	11.6	10.4	115.61	-16.4	-474.4	354.2	333.6	20.67	17.138			
2,400.0	2,296.5	2,341.9	2,277.9	12.4	10.9	117.07	-17.4	-501.3	379.3	357.4	21.91	17.313			
2,500.0	2,387.9	2,438.3	2,370.4	13.3	11.5	118.35	-18.4	-528.3	404.6	381.5	23.14	17.485			
2,600.0	2,479.3	2,534.6	2,462.9	14.1	12.1	119.48	-19.3	-555.3	430.1	405.7	24.37	17.651			
2,700.0	2,570.8	2,631.0	2,555.4	15.0	12.7	120.48	-20.3	-582.2	455.7	430.1	25.59	17.810			
2,800.0	2,662.2	2,727.4	2,648.0	15.8	13.3	121.38	-21.3	-609.2	481.4	454.6	26.80	17.962			
2,900.0	2,753.6	2,823.8	2,740.5	16.6	13.8	122.19	-22.2	-636.2	507.2	479.2	28.01	18.107			
3,000.0	2,845.0	2,920.1	2,833.0	17.5	14.4	122.91	-23.2	-663.1	533.1	503.9	29.22	18.244			
3,100.0	2,936.4	3,016.5	2,925.5	18.3	15.0	123.58	-24.2	-690.1	559.1	528.7	30.43	18.375			
3,200.0	3,027.8	3,112.9	3,018.0	19.1	15.6	124.18	-25.1	-717.1	585.1	553.5	31.63	18.499			
3,300.0	3,119.2	3,209.3	3,110.6	20.0	16.2	124.73	-26.1	-744.0	611.2	578.4	32.83	18.616			
3,400.0	3,210.6	3,305.6	3,203.1	20.8	16.7	125.23	-27.1	-771.0	637.4	603.3	34.03	18.728			
3,500.0	3,302.1	3,402.0	3,295.6	21.7	17.3	125.70	-28.0	-798.0	663.5	628.3	35.23	18.834			
3,600.0	3,393.5	3,498.4	3,388.1	22.5	17.9	126.13	-29.0	-824.9	689.8	653.3	36.43	18.934			
3,700.0	3,484.9	3,594.8	3,480.7	23.3	18.5	126.53	-29.9	-851.9	716.0	678.4	37.63	19.030			
3,800.0	3,576.3	3,691.1	3,573.2	24.2	19.1	126.90	-30.9	-878.9	742.3	703.5	38.82	19.121			
3,900.0	3,667.7	3,787.5	3,665.7	25.0	19.6	127.25	-31.9	-905.8	768.6	728.6	40.02	19.207			
4,000.0	3,759.1	3,883.9	3,758.2	25.9	20.2	127.57	-32.8	-932.8	795.0	753.8	41.21	19.290			
4,100.0	3,850.5	3,980.3	3,850.7	26.7	20.8	127.87	-33.8	-959.8	821.3	778.9	42.41	19.368			
4,200.0	3,941.9	4,076.6	3,943.3	27.5	21.4	128.16	-34.8	-986.7	847.7	804.1	43.60	19.443			
4,300.0	4,033.4	4,173.0	4,035.8	28.4	22.0	128.42	-35.7	-1,013.7	874.1	829.3	44.79	19.515			
4,400.0	4,124.8	4,269.4	4,128.3	29.2	22.5	128.67	-36.7	-1,040.7	900.5	854.5	45.98	19.583			
4,500.0	4,216.2	4,365.8	4,220.8	30.1	23.1	128.91	-37.7	-1,067.6	926.9	879.8	47.18	19.649			
4,600.0	4,307.6	4,462.1	4,313.3	30.9	23.7	129.13	-38.6	-1,094.6	953.4	905.0	48.37	19.711			
4,700.0	4,399.0	4,558.5	4,405.9	31.8	24.3	129.35	-39.6	-1,121.5	979.8	930.3	49.56	19.772			
4,800.0	4,490.4	4,654.9	4,498.4	32.6	24.9	129.55	-40.6	-1,148.5	1,006.3	955.6	50.75	19.829			
4,900.0	4,581.8	4,751.3	4,590.9	33.4	25.5	129.74	-41.5	-1,175.5	1,032.8	980.9	51.94	19.884			
5,000.0	4,673.2	4,847.6	4,683.4	34.3	26.0	129.92	-42.5	-1,202.4	1,059.3	1,006.2	53.13	19.937			
5,100.0	4,764.7	4,944.0	4,775.9	35.1	26.6	130.09	-43.5	-1,229.4	1,085.8	1,031.5	54.32	19.988			
5,180.8	4,838.5	5,021.9	4,850.7	35.8	27.1	130.22	-44.2	-1,251.2	1,107.2	1,051.9	55.28	20.028			
5,200.0	4,856.1	5,040.4	4,868.5	35.9	27.2	130.33	-44.4	-1,256.4	1,112.3	1,056.8	55.50	20.040			
5,300.0	4,948.5	5,137.2	4,961.4	36.5	27.8	130.78	-45.4	-1,283.5	1,137.3	1,080.7	56.58	20.101			
5,400.0	5,042.1	5,233.7	5,054.2	37.1	28.3	131.09	-46.3	-1,309.9	1,160.1	1,102.5	57.57	20.151			
5,500.0	5,136.9	5,330.1	5,147.7	37.6	28.7	131.38	-47.2	-1,333.4	1,180.7	1,122.3	58.41	20.216			
5,600.0	5,232.8	5,426.9	5,242.3	38.1	29.0	131.68	-47.9	-1,353.8	1,199.3	1,140.1	59.15	20.277			
5,700.0	5,329.6	5,524.0	5,337.9	38.5	29.3	131.97	-48.5	-1,371.1	1,215.7	1,155.9	59.79	20.333			
5,800.0	5,427.2	5,621.4	5,434.2	38.8	29.6	132.26	-49.0	-1,385.2	1,229.9	1,169.5	60.32	20.388			
5,900.0	5,525.5	5,719.0	5,531.2	39.1	29.8	132.55	-49.4	-1,396.0	1,241.9	1,181.1	60.76	20.440			
6,000.0	5,624.4	5,816.7	5,628.6	39.4	30.0	132.84	-49.7	-1,403.5	1,251.7	1,190.6	61.09	20.490			
6,100.0	5,723.7	5,914.4	5,726.2	39.6	30.1	133.13	-49.8	-1,407.7	1,259.3	1,197.9	61.31	20.538			
6,200.0	5,823.4	6,012.6	5,824.4	39.8	30.2	133.42	-49.9	-1,408.6	1,264.6	1,203.2	61.45	20.581			
6,300.0	5,923.3	6,112.5	5,924.3	39.9	30.3	133.61	-49.9	-1,408.6	1,267.7	1,206.1	61.56	20.594			
6,376.7	6,000.0	6,189.2	6,001.0	40.0	30.3	1.01	-49.9	-1,408.6	1,268.4	1,206.7	61.64	20.576			
6,400.0	6,023.3	6,212.5	6,024.3	40.0	30.4	1.01	-49.9	-1,408.6	1,268.4	1,206.7	61.69	20.562			
6,500.0	6,123.3	6,312.5	6,124.3	40.0	30.5	1.01	-49.9	-1,408.6	1,268.4	1,206.5	61.86	20.504			
6,600.0	6,223.3	6,412.5	6,224.3	40.1	30.5	1.01	-49.9	-1,408.6	1,268.4	1,206.4	62.04	20.445			
6,700.0	6,323.3	6,512.5	6,324.3	40.2	30.6	1.01	-49.9	-1,408.6	1,268.4	1,206.2	62.22	20.386			
6,800.0	6,423.3	6,612.5	6,424.3	40.2	30.7	1.01	-49.9	-1,408.6	1,268.4	1,206.0	62.40	20.326			
6,900.0	6,523.3	6,712.5	6,524.3	40.3	30.8	1.01	-49.9	-1,408.6	1,268.4	1,205.8	62.59	20.266			

CC - Min centre to center distance or convergent point, SF - min separation factor, ES - min ellipse separation

Company: BAYSWATER EXPLORATION & PRODUCTION
Project: SEC.3-T6N-R67W
Reference Site: Bowers 2 Pad Sec.3-T6N-R67W
Site Error: 0.0ft
Reference Well: Bower 15-3
Well Error: 0.0ft
Reference Wellbore: Wellbore #1
Reference Design: Plan #1 (9-24-12)

Local Co-ordinate Reference: Well Bower 15-3
TVD Reference: WELL @ 4957.0ft (Original Well Elev)
MD Reference: WELL @ 4957.0ft (Original Well Elev)
North Reference: True
Survey Calculation Method: Minimum Curvature
Output errors are at 2.00 sigma
Database: Landmark
Offset TVD Reference: Offset Datum

Offset Design Bowers 2 Pad Sec.3-T6N-R67W - Bower 10-3 - Wellbore #1 - Plan #1 (9-24-12)													Offset Site Error:	0.0 ft
Survey Program: 0-MWD													Offset Well Error:	0.0 ft
Reference		Offset		Semi Major Axis			Distance						Warning	
Measured Depth (ft)	Vertical Depth (ft)	Measured Depth (ft)	Vertical Depth (ft)	Reference (ft)	Offset (ft)	Highside Toolface (°)	Offset Wellbore Centre +N/-S (ft)	+E/-W (ft)	Between Centres (ft)	Between Ellipses (ft)	Minimum Separation (ft)	Separation Factor		
7,000.0	6,623.3	6,812.5	6,624.3	40.4	30.9	1.01	-49.9	-1,408.6	1,268.4	1,205.6	62.78	20.205		
7,100.0	6,723.3	6,912.5	6,724.3	40.4	31.0	1.01	-49.9	-1,408.6	1,268.4	1,205.4	62.97	20.144		
7,200.0	6,823.3	7,012.5	6,824.3	40.5	31.1	1.01	-49.9	-1,408.6	1,268.4	1,205.2	63.16	20.082		
7,300.0	6,923.3	7,112.5	6,924.3	40.6	31.2	1.01	-49.9	-1,408.6	1,268.4	1,205.0	63.36	20.020		
7,400.0	7,023.3	7,212.5	7,024.3	40.6	31.4	1.01	-49.9	-1,408.6	1,268.4	1,204.8	63.56	19.957		
7,500.0	7,123.3	7,312.5	7,124.3	40.7	31.5	1.01	-49.9	-1,408.6	1,268.4	1,204.6	63.76	19.894		
7,600.0	7,223.3	7,412.5	7,224.3	40.8	31.6	1.01	-49.9	-1,408.6	1,268.4	1,204.4	63.96	19.831		
7,700.0	7,323.3	7,512.5	7,324.3	40.9	31.7	1.01	-49.9	-1,408.6	1,268.4	1,204.2	64.17	19.767		
7,800.0	7,423.3	7,612.5	7,424.3	40.9	31.8	1.01	-49.9	-1,408.6	1,268.4	1,204.0	64.38	19.703		
7,900.0	7,523.3	7,712.5	7,524.3	41.0	31.9	1.01	-49.9	-1,408.6	1,268.4	1,203.8	64.59	19.638		
7,918.6	7,541.9	7,731.1	7,542.9	41.0	31.9	1.01	-49.9	-1,408.6	1,268.4	1,203.8	64.63	19.626		
7,945.7	7,569.0	7,738.2	7,550.0	41.1	31.9	1.01	-49.9	-1,408.6	1,268.5	1,203.9	64.66	19.618		

Company: BAYSWATER EXPLORATION & PRODUCTION
Project: SEC.3-T6N-R67W
Reference Site: Bowers 2 Pad Sec.3-T6N-R67W
Site Error: 0.0ft
Reference Well: Bower 15-3
Well Error: 0.0ft
Reference Wellbore: Wellbore #1
Reference Design: Plan #1 (9-24-12)

Local Co-ordinate Reference: Well Bower 15-3
TVD Reference: WELL @ 4957.0ft (Original Well Elev)
MD Reference: WELL @ 4957.0ft (Original Well Elev)
North Reference: True
Survey Calculation Method: Minimum Curvature
Output errors are at: 2.00 sigma
Database: Landmark
Offset TVD Reference: Offset Datum

Reference Depths are relative to WELL @ 4957.0ft (Original Well Elev) Coordinates are relative to: Bower 15-3

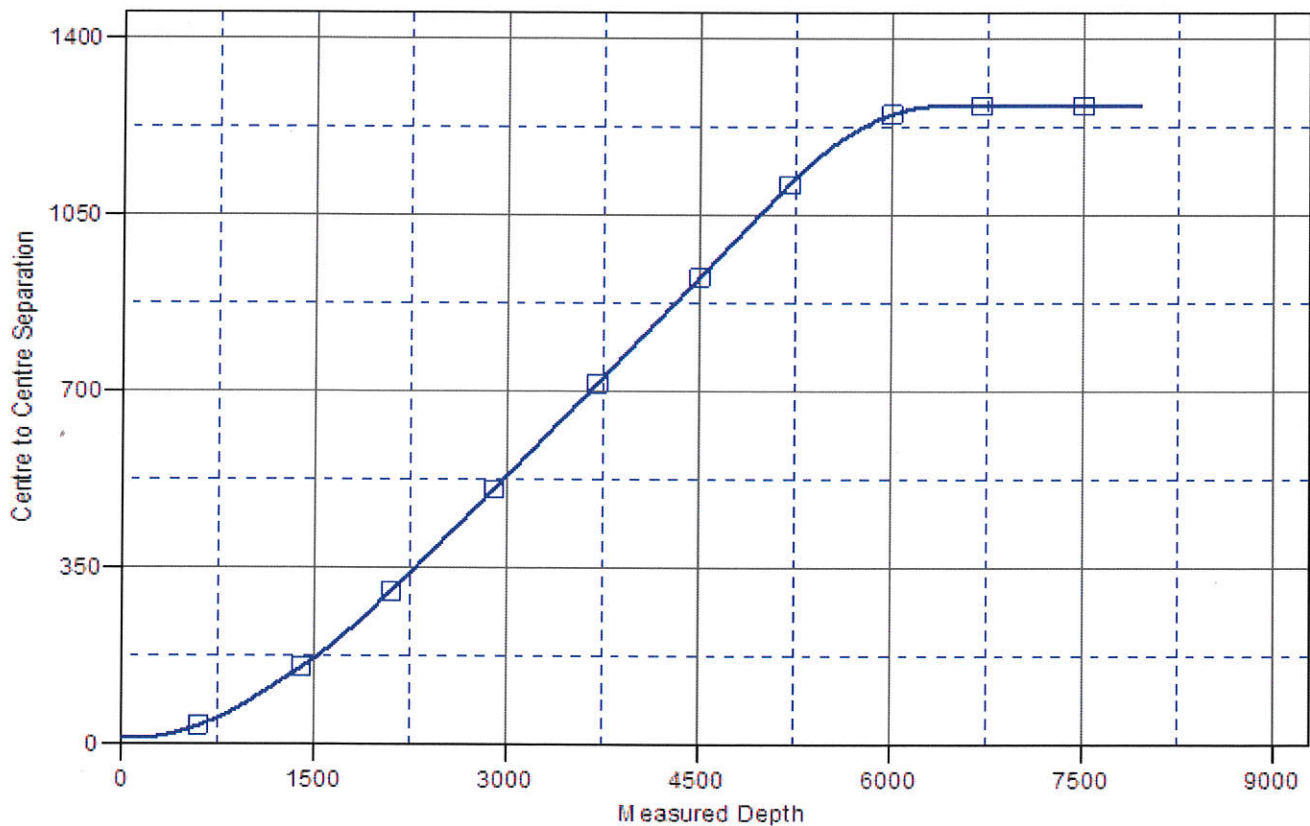
Offset Depths are relative to Offset Datum

Central Meridian is -105.500000 °

Coordinate System is US State Plane 1983, Colorado Northern Zone

Grid Convergence at Surface is: 0.41°

Ladder Plot



LEGEND

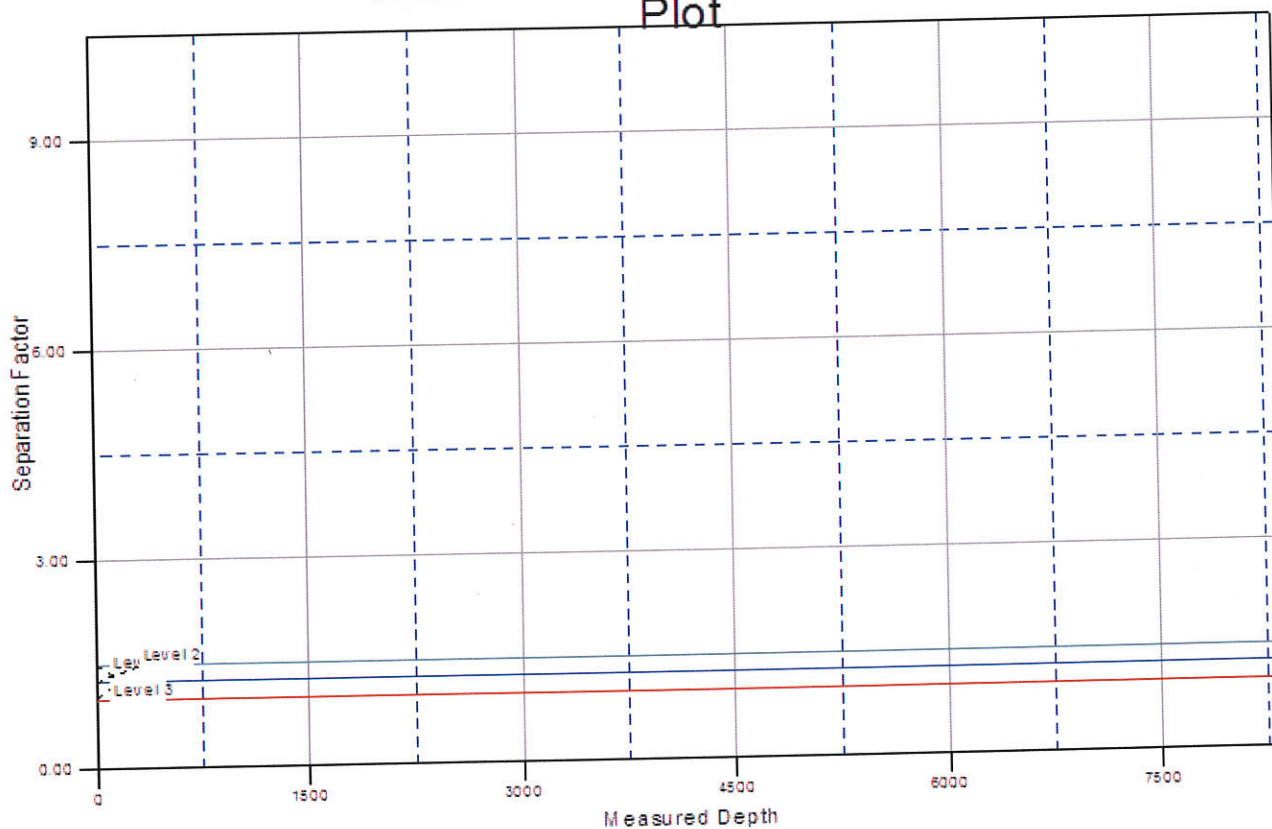
Bower 10-3, Wellbore #1, Plan #1 (9-24-12) V0

Company: BAYSWATER EXPLORATION & PRODUCTION
Project: SEC.3-T6N-R67W
Reference Site: Bowers 2 Pad Sec.3-T6N-R67W
Site Error: 0.0ft
Reference Well: Bower 15-3
Well Error: 0.0ft
Reference Wellbore: Wellbore #1
Reference Design: Plan #1 (9-24-12)

Local Co-ordinate Reference: Well Bower 15-3
TVD Reference: WELL @ 4957.0ft (Original Well Elev)
MD Reference: WELL @ 4957.0ft (Original Well Elev)
North Reference: True
Survey Calculation Method: Minimum Curvature
Output errors are at: 2.00 sigma
Database: Landmark
Offset TVD Reference: Offset Datum

Reference Depths are relative to WELL @ 4957.0ft (Original Well Elev) Coordinates are relative to: Bower 15-3
Offset Depths are relative to Offset Datum
Central Meridian is -105.500000 °
Coordinate System is US State Plane 1983, Colorado Northern Zone
Grid Convergence at Surface is: 0.41°

Separation Factor Plot



LEGEND

■ Bower 10-3, Wellbore #1, Plan #1 (9-24-12) V0