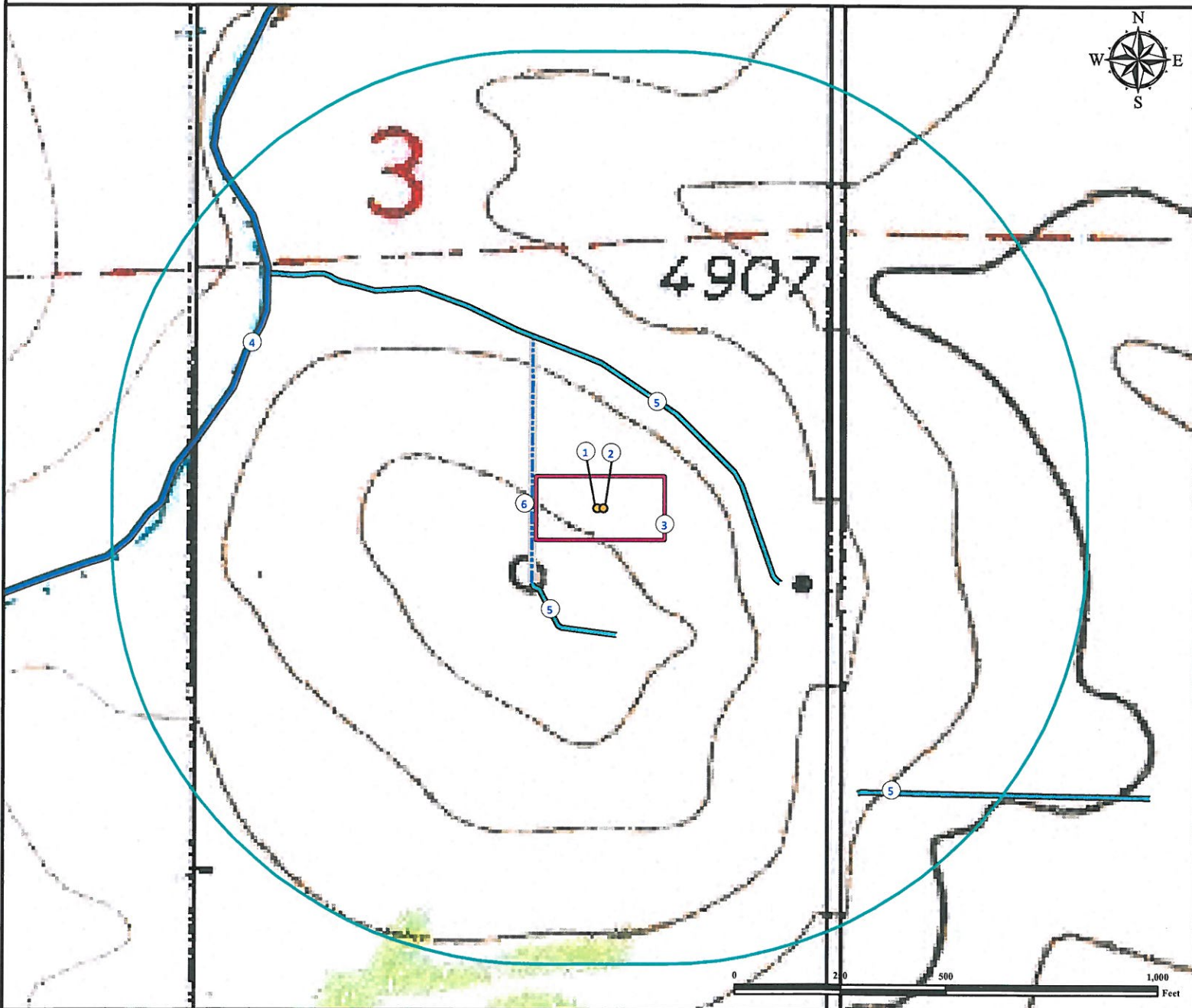


Hydrology Map

BOWER 15-3

NE¼ SE¼ SECTION 3, TOWNSHIP 6 NORTH, RANGE 67 WEST OF THE 6TH PRINCIPAL MERIDIAN



- | | |
|----------------------------------|---|
| 1. Proposed well BOWER 10-3. | 4. Canal is $\pm 919'$ NW. |
| 2. Proposed well BOWER 15-3. | 5. Ditches are $\pm 242'$ SW, $\pm 277'$ NE, and $\pm 898'$ SE. |
| 3. Operational Disturbance Area. | 6. Concrete Ditch is $\pm 167'$ W. |

Legend

- | | | |
|------------------|----------------|-------|
| Proposed Well | 1000' Radius | Canal |
| Disturbance Area | Concrete Ditch | Ditch |

Reference Location

** All Measurements are Made from Reference Well BOWER 15-3 **

Lat: 40.514414° Long: -104.872075° (NAD83)
Elevation: 4941 Feet



Use our resources to find yours!
www.petro-fs.com
(303) 928-7128

Field Date: 08/01/2012
Drafting Date: 08/20/2012
Drafter: DLR
Revision:

Data Sources:
- TOPO courtesy USGS
- Canal courtesy NHD

Prepared for:



BAYSWATER
EXPLORATION AND PRODUCTION, LLC