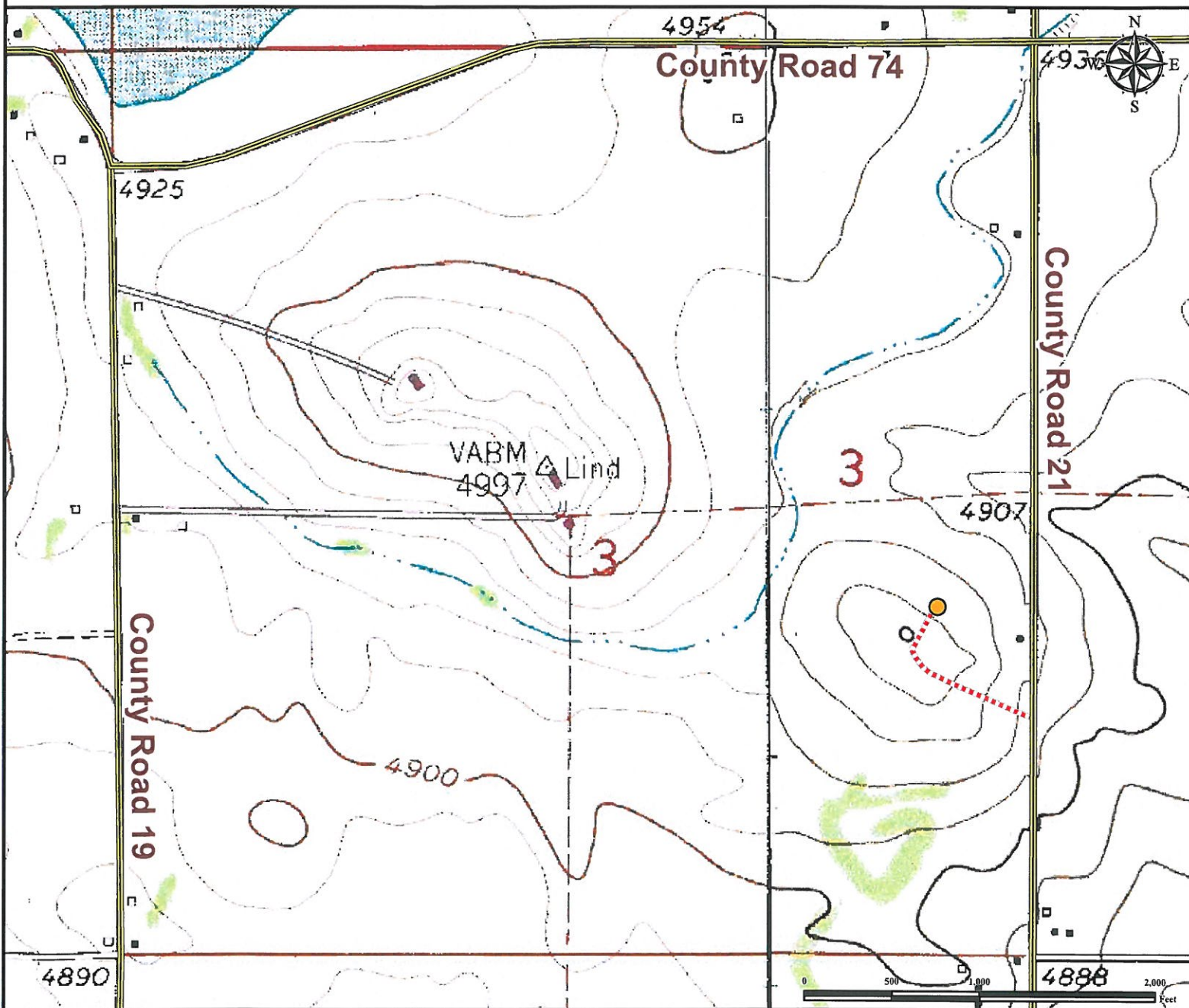


# Access Road Map

## BOWER 15-3

NE¼ SE¼ SECTION 3, TOWNSHIP 6 NORTH, RANGE 67 WEST OF THE 6TH PRINCIPAL MERIDIAN



From Severance, CO: From the intersection of County Road 74/4th Ave. and 1st Street, Drive West on County Road 74/4th Ave. for ±1.0 mile to County Road 21. Turn Left onto County Road 21 and proceed South ±0.73 miles to proposed access road. Turn Right on proposed access road and proceed Northeast ±0.15 miles, follow road as it turns Northeast and drive ±0.05 miles to proposed well pad location.

Total distance from Severance, CO to proposed well pad location is ±1.93 miles.

### Legend

● Proposed Well Pad     
 ---- Proposed Access Road     
 == Public Road

### Reference Location

\*\* All Measurements are Made from Reference Well BOWER 15-3 \*\*

Lat: 40.514414° Long: -104.872075° (NAD83)  
Elevation: 4941 Feet

Surface Use: Improved Pasture



Use our resources to find yours!  
[www.petro-fs.com](http://www.petro-fs.com)  
(303) 928-7128

Field Date: 08/01/2012  
Drafting Date: 08/13/2012  
Drafter: DLR  
Revision:

Data Sources:  
- Aerial courtesy of USGS

Prepared for:

