

HALLIBURTON

WPX ENERGY ROCKY MOUNTAIN LLC-EBUS

**RGU 24-25-198
SULPHUR CREEK
Rio Blanco County , Colorado**

Cement Multiple Stages **23-Jul-2012**

Post Job Summary

The Road to Excellence Starts with Safety

Sold To #: 300721		Ship To #: 2885912		Quote #:		Sales Order #: 9664066	
Customer: WPX ENERGY ROCKY MOUNTAIN LLC-EBUS				Customer Rep: Brunk, Andrew			
Well Name: RGU		Well #: 24-25-198		API/UWI #: 05-103-11876			
Field: SULPHUR CREEK		City (SAP): MEEKER		County/Parish: Rio Blanco		State: Colorado	
Lat: N 39.928 deg. OR N 39 deg. 55 min. 40.998 secs.				Long: W 108.346 deg. OR W -109 deg. 39 min. 13.475 secs.			
Contractor: CYCLONE 29		Rig/Platform Name/Num: CYCLONE 29					
Job Purpose: Cement Multiple Stages							
Well Type: Development Well				Job Type: Cement Multiple Stages			
Sales Person: SCOTT, KYLE				Srcv Supervisor: DEUSSEN, EDWARD		MBU ID Emp #: 485182	
Job Personnel							
HES Emp Name		Exp Hrs	Emp #	HES Emp Name		Exp Hrs	Emp #
BANKS, BRENT A		0.0	371353	BROWN, TRAVIS A		0.0	396848
DEUSSEN, EDWARD Eric		0.0	485182	ROMKEE, DALE Alan		0.0	488215
CHASTAIN, DERICK Allan		0.0	455848				
Equipment							
HES Unit #	Distance-1 way	HES Unit #	Distance-1 way	HES Unit #	Distance-1 way	HES Unit #	Distance-1 way
10744549	30 mile	10867304	30 mile	10872429	30 mile	10995027	30 mile
10998054	30 mile	11259885	30 mile	11808847	30 mile	4902	30 mile
4905	30 mile	HBL-2000-3	30 mile				
Job Hours							
Date	On Location Hours	Operating Hours	Date	On Location Hours	Operating Hours	Date	On Location Hours
TOTAL		Total is the sum of each column separately					
Job				Job Times			
Formation Name				Date	Time	Time Zone	
Formation Depth (MD) Top Bottom				Called Out	22 - Jul - 2012	02:30	MST
Form Type BHST				On Location	22 - Jul - 2012	20:00	MST
Job depth MD 3932. ft Job Depth TVD 3932. ft				Job Started	22 - Jul - 2012	23:13	MST
Water Depth Wk Ht Above Floor 4. ft				Job Completed	23 - Jul - 2012	03:00	MST
Perforation Depth (MD) From To				Departed Loc	23 - Jul - 2012	04:45	MST
Well Data							
Description	New / Used	Max pressure psig	Size in	ID in	Weight lbm/ft	Thread	Grade
							Top MD ft Bottom MD ft Top TVD ft Bottom TVD ft
Sales/Rental/3 rd Party (HES)							
Description				Qty	Qty uom	Depth	Supplier
PORT. DATA ACQUIS. W/OPTICEM RT W/HES				1	EA		
R/A DENSOMETER W/CHART RECORDER,/JOB,ZI				1	JOB		
ADC (AUTO DENSITY CTRL) SYS, /JOB,ZI				1	JOB		
Tools and Accessories							
Type	Size	Qty	Make	Depth	Type	Size	Qty
Guide Shoe					Packer		
Float Shoe					Bridge Plug		
Float Collar					Retainer		
Insert Float							
Stage Tool							
Miscellaneous Materials							
Gelling Agt		Conc		Surfactant		Conc	
Treatment Fld		Conc		Inhibitor		Conc	
Acid Type				Qty		Conc	%
Sand Type				Size		Qty	

Fluid Data

Stage/Plug #: 1

Fluid #	Stage Type	Fluid Name	Qty	Qty uom	Mixing Density lbm/gal	Yield ft ³ /sk	Mix Fluid Gal/sk	Rate bbl/min	Total Mix Fluid Gal/sk
1	Fresh Water Spacer		20.00	bbl	8.33	.0	.0	.0	
2	1st Stage Lead Cement	ECONOCEM (TM) SYSTEM (452992)	670.0	sacks	12.8	1.77	9.34		9.34
	9.34 Gal	FRESH WATER							
3	1st Stage Tail Cement	VARICEM (TM) CEMENT (452009)	200.0	sacks	12.8	1.96	10.95		10.95
	10.95 Gal	FRESH WATER							
4	Displacement		300.00	bbl	8.33	.0	.0	.0	
5	Mud Displacement			bbl	.	.0	.0	.0	
6	Fresh Water Spacer		20.00	bbl	8.33	.0	.0	.0	
7	2nd Stage Tail Cement	VARICEM (TM) CEMENT (452009)	1070.0	sacks	12.8	1.96	10.95		10.95
	10.95 Gal	FRESH WATER							
8	Displacement		140.00	bbl	8.33	.0	.0	.0	
9	SUPER FLUSH 100	SUPER FLUSH 100 - SBM (12191)	0.00	bbl	11.7	.0	.0	.0	
10	HalCem TopOut	HALCEM (TM) SYSTEM (452986)		sacks	15.8	1.15	5.01		5.01
	5.01 Gal	FRESH WATER							
Calculated Values		Pressures		Volumes					
Displacement		Shut In: Instant		Lost Returns		Cement Slurry		Pad	
Top Of Cement		5 Min		Cement Returns		Actual Displacement		Treatment	
Frac Gradient		15 Min		Spacers		Load and Breakdown		Total Job	
Rates									
Circulating		Mixing		Displacement		Avg. Job			
Cement Left In Pipe	Amount	0 ft	Reason	Shoe Joint					
Frac Ring # 1 @	ID	Frac ring # 2 @	ID	Frac Ring # 3 @	ID	Frac Ring # 4 @	ID		
The Information Stated Herein Is Correct				Customer Representative Signature					

The Road to Excellence Starts with Safety

Sold To #: 300721		Ship To #: 2885912		Quote #:		Sales Order #: 9664066	
Customer: WPX ENERGY ROCKY MOUNTAIN LLC-EBUS				Customer Rep: Brunk, Andrew			
Well Name: RGU			Well #: 24-25-198			API/UWI #: 05-103-11876	
Field: SULPHUR CREEK		City (SAP): MEEKER		County/Parish: Rio Blanco		State: Colorado	
Legal Description:							
Lat: N 39.928 deg. OR N 39 deg. 55 min. 40.998 secs.				Long: W 108.346 deg. OR W -109 deg. 39 min. 13.475 secs.			
Contractor: CYCLONE 29			Rig/Platform Name/Num: CYCLONE 29				
Job Purpose: Cement Multiple Stages						Ticket Amount:	
Well Type: Development Well			Job Type: Cement Multiple Stages				
Sales Person: SCOTT, KYLE			Srvc Supervisor: DEUSSEN, EDWARD		MBU ID Emp #: 485182		

Activity Description	Date/Time	Cht #	Rate bbl/ min	Volume bbl		Pressure psig		Comments
				Stage	Total	Tubing	Casing	
Call Out	07/22/2012 14:30							
Pre-Convoy Safety Meeting	07/22/2012 16:45							
Crew Leave Yard	07/22/2012 17:00							1 ELITE, 1 660, 1 PICKUP, 2 FIELD STORAGE SILOS
Arrive At Loc	07/22/2012 20:00							RIG STILL RUNNING CASING
Assessment Of Location Safety Meeting	07/22/2012 20:30							
Pre-Rig Up Safety Meeting	07/22/2012 21:45							
Rig-Up Equipment	07/22/2012 22:00							1 HARD LINE TO STANDPIPE, 2 WATER HOSES TO UPRIGHTS, BULK HOSES TO SILOS AND 660
Pre-Job Safety Meeting	07/22/2012 22:45							
Start Job	07/22/2012 23:13							TD 3944, TP 3934.53, SJ 45.80, OH 14 3/4 TO 1779 FT, 13 1/2 TO TD, CSG 9 5/8, 40 LB FOR FIRST 425 FT, 36 LBS FOR REST OF CASING, MUD WT 9.0, PV 5, YP 10 MSC LOCATED AT 1814 FT
Pump Water	07/22/2012 23:14		2	2			67.0	FILL LINES
Pressure Test	07/22/2012 23:18							PRESSURED UP TO 3630 PSI
Pump Spacer 1	07/22/2012 23:23		4	20			140.0	FRESH WATER

Cementing Job Log

Activity Description	Date/Time	Cht #	Rate bbl/min	Volume bbl		Pressure psig		Comments
				Stage	Total	Tubing	Casing	
Pump Lead Cement	07/22/2012 23:32		8	203			404.0	670 SKS, 12.8 PPG, 1.77 YIELD, 9.34 GAL/SK - ADDED TUFF FIBER TO FIRST 100 BBLS
Pump Tail Cement	07/23/2012 00:08		8	68			390.0	200 SKS, 12.8, 1.96 YIELD, 10.95 GAL/SK
Shutdown	07/23/2012 00:22							
Drop Top Plug	07/23/2012 00:25							PULLED CAP TO DROP PLUG
Pump Displacement	07/23/2012 00:28		8	130			268.0	FRESH WATER
Slow Rate	07/23/2012 00:50		5	20			110.0	SLOW RATE AT 130-150 BBL TO PASS WIPER DART THROUGH TOOL
Pump Displacement	07/23/2012 00:55		8	150			991.0	
Bump Plug	07/23/2012 01:10		4				746.0	1 BBL BACK
Check Floats	07/23/2012 01:11							FLOATS HELD
Drop Opening Device For Multiple Stage Cementer	07/23/2012 01:12							WAIT 10 MINUTES
Pump Spacer 1	07/23/2012 01:29		4	20			375.0	FRESH WATER - PRESSURE UP TO OPEN MSC - CUSTOMER DID NOT WANT TO WAIT BETWEEN STAGES, BUILT TUB ONCE RETURNS WERE ESTABLISHED
Pump Tail Cement	07/23/2012 01:36		8	389			465.0	1070 SKS, 12.8 PPG, 1.96 YIELD, 10.95 GAL/SK - CUSTOMER REQUESTED TUFF FIBER IN LAST 100 BBLS
Shutdown	07/23/2012 02:31							DROP MULTIPLE STAGE CLOSING PLUG
Pump Displacement	07/23/2012 02:34		8	138			619.0	FRESH WATER - GOT 102 BBLS CEMENT BACK FROM 1ST STAGE, 15 BBLS CEMENT BACK ON 2ND STAGE

Sold To #: 300721

Ship To #: 2885912

Quote #:

Sales Order #:

9664066

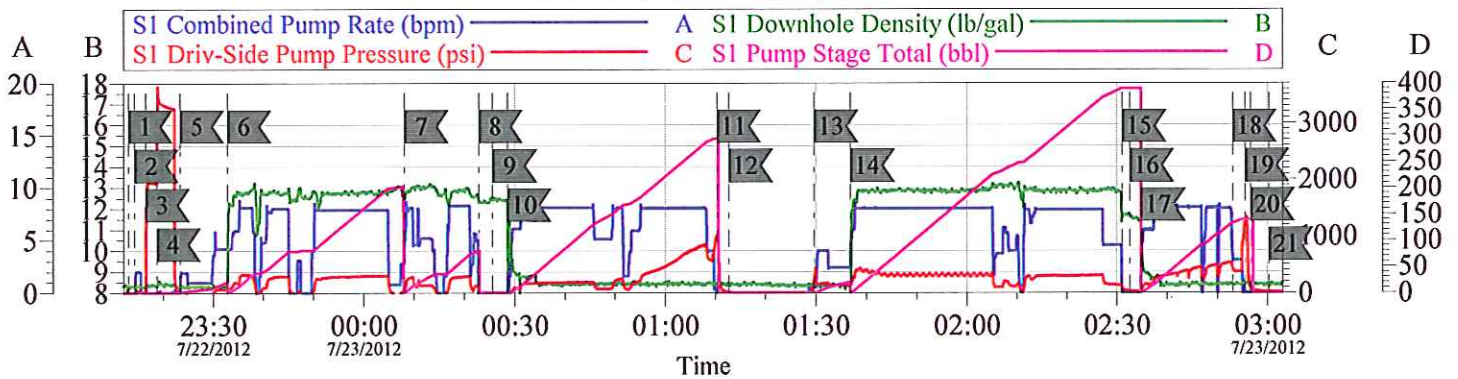
SUMMIT Version: 7.3.0030

Tuesday, August 07, 2012 10:06:00

Cementing Job Log

Activity Description	Date/Time	Cht #	Rate bbl/min	Volume bbl		Pressure psig		Comments
				Stage	Total	Tubing	Casing	
Slow Rate	07/23/2012 02:53		4	10			442.0	
Close Multiple Stage Cementer	07/23/2012 02:55							
Other	07/23/2012 02:56							RELEASED PRESSURE - MSC CLOSED
End Job	07/23/2012 03:00							DID NOT USE OR CHARGE FOR SUPERFLUSH, TOPOUT, BOOSTER PUMP, CALCIUM CHLORIDE, SUGAR - AND DID NOT WAIT BETWEEN PUMPING STAGES.
Pre-Rig Down Safety Meeting	07/23/2012 03:15							
Rig-Down Equipment	07/23/2012 03:30							
Pre-Convoy Safety Meeting	07/23/2012 04:30							
Crew Leave Location	07/23/2012 04:45							
Other	07/23/2012 04:46							THANK YOU FOR USING HALLIBURTON AND ED DEUSSEN AND CREW

WPX - RGU 24-25-198
9 5/8 SURFACE - STAGE 1



Local Event Log

1	START JOB	7/22/2012 23:13:08	2	FILL LINES	7/22/2012 23:14:19
3	5TH GEAR STALL OUT	7/22/2012 23:16:31	4	PRESSURE TEST	7/22/2012 23:18:42
5	PUMP WATER SPACER	7/22/2012 23:23:23	6	PUMP LEAD CEMENT	7/22/2012 23:32:52
7	PUMP TAIL CEMENT	7/23/2012 00:08:07	8	SHUTDOWN	7/23/2012 00:22:53
9	DROP WIPER PLUG	7/23/2012 00:25:39	10	PUMP DISPLACEMENT	7/23/2012 00:28:35
11	BUMP PLUG	7/23/2012 01:10:22	12	DROP OPENING PLUG	7/23/2012 01:12:42
13	OPEN MSC/ H2O SPACER	7/23/2012 01:29:42	14	TAIL CEMENT	7/23/2012 01:36:52
15	SHUT DOWN	7/23/2012 02:31:07	16	DROP CLOSING PLUG	7/23/2012 02:32:37
17	PUMP DISPLACEMENT	7/23/2012 02:34:55	18	SLOW RATE	7/23/2012 02:53:02
19	CLOSE MSC	7/23/2012 02:55:27	20	CHECK FLOATS	7/23/2012 02:56:34
21	END JOB	7/23/2012 03:00:19			

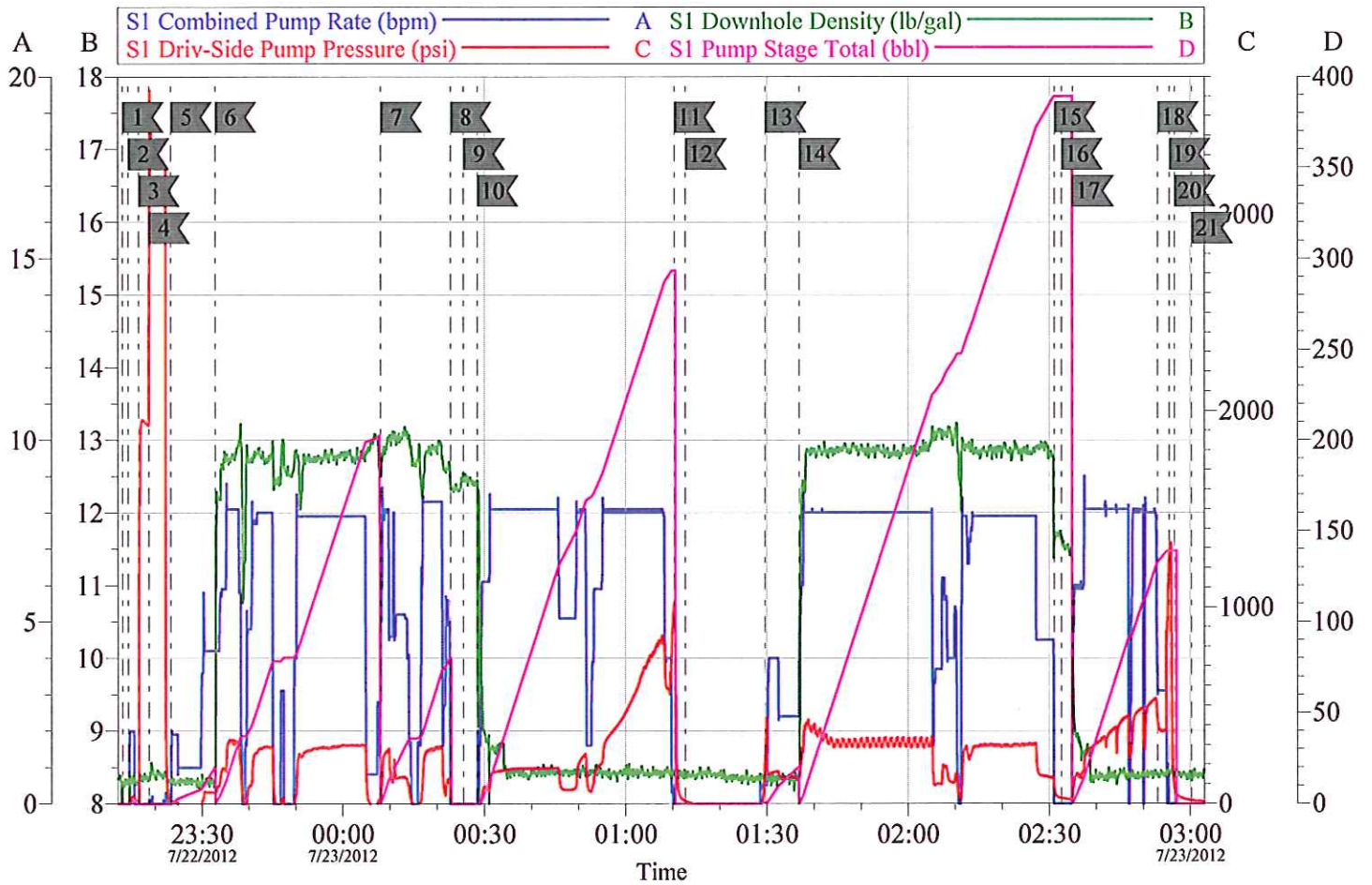
Customer: WPX
Well Description: RGU 24-25-198

Job Date: 22-Jul-2012
JOB TYPE: SURFACE

Sales Order #: 9664066
ADC USED: YES

OptiCem v6.4.10
23-Jul-12 03:15

WPX - RGU 24-25-198
9 5/8 SURFACE - STAGE 1



Customer: WPX
Well Description: RGU 24-25-198

Job Date: 22-Jul-2012
JOB TYPE: SURFACE

Sales Order #: 9664066
ADC USED: YES

OptiCem v6.4.10
23-Jul-12 03:16