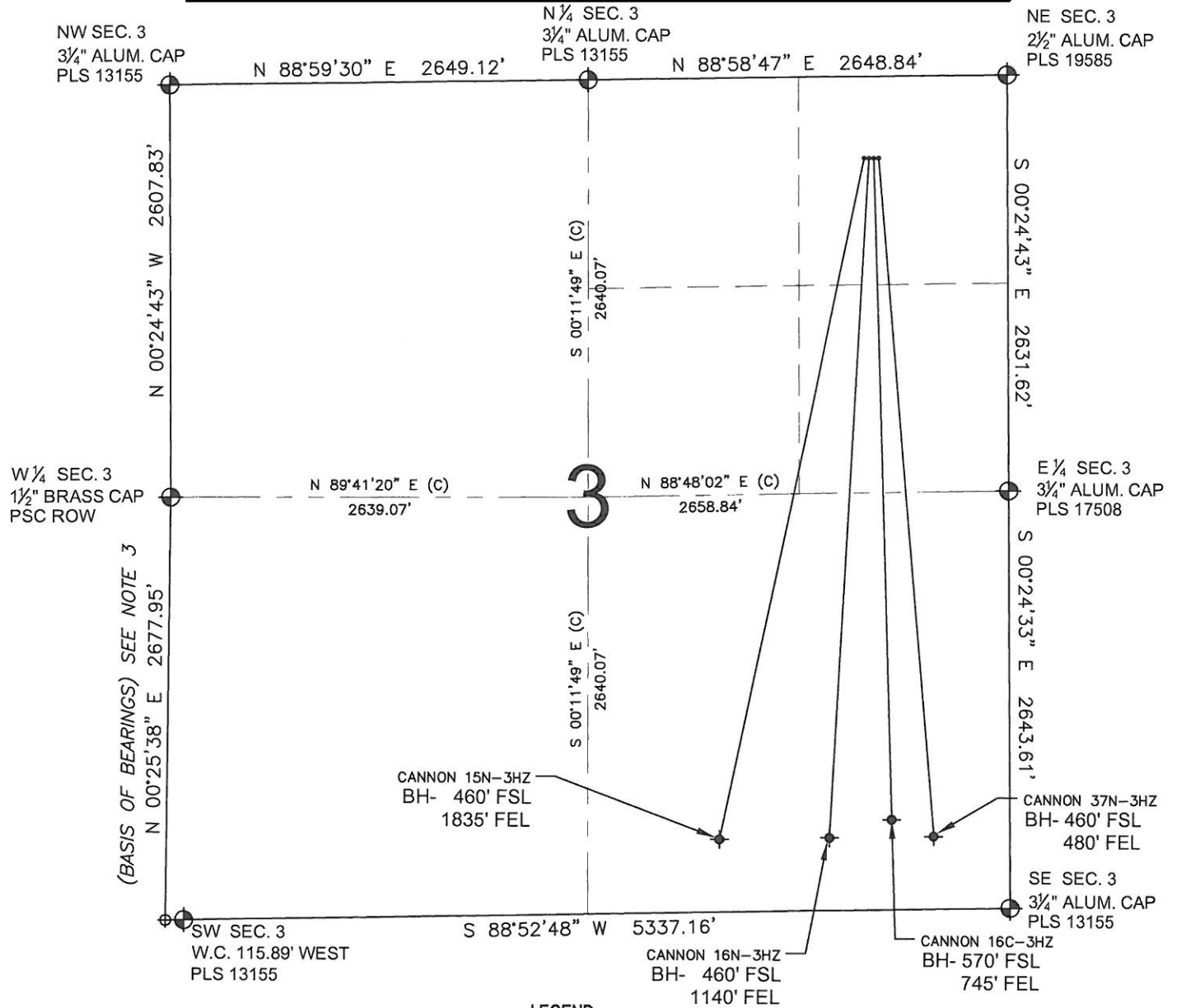


CANNON 16C-3HZ MULTI-WELL PLAN



NOTES:

1. THIS FIELD SURVEY CONFORMS TO THE MINIMUM STANDARDS SET BY THE C.O.G.C.C., RULE NO. 215
2. HORIZONTAL POSITIONS AND ORTHOMETRIC ELEVATIONS SHOWN AT THE WELL HEAD, ARE BASED ON GPS-RTK POSITIONS DERIVED FROM MINIMUM 2-HOUR STATIC OBSERVATIONS CORRECTED BY THE NATIONAL GEODETIC SURVEY ONLINE POSITIONING USER SERVICE, O.P.U.S. DATUM: HORIZONTAL = NAD83/2007, VERTICAL = NAVD88
3. THE BASIS OF BEARINGS ARE STATE PLANE COORDINATE SYSTEM GRID BEARINGS SHOWN HEREON BETWEEN THE DESCRIBED THE MONUMENTS SHOWN HEREON.
4. GRID DISTANCES ARE SHOWN, AS MEASURED IN THE FIELD, WITH TIES TO WELLS MEASURED PERPENDICULAR TO SECTION LINES.

LEGEND

- ⊕ = EXISTING MONUMENT
- = PROPOSED WELL
- ⬮ = BOTTOM HOLE
- ⬮ = EXISTING WELL
- ⊕ = CORNER NO MONUMENT

NOTES:

- CANNON 15N-3HZ TO BE AT 516' FNL, 904' FEL.
- BOTTOM HOLE AT 460' FSL & 1835' FEL.
- CANNON 16N-3HZ TO BE AT 517' FNL, 874' FEL.
- BOTTOM HOLE AT 460' FSL & 1140' FEL.
- CANNON 16C-3HZ TO BE AT 517' FNL, 844' FEL.
- BOTTOM HOLE AT 570' FSL & 745' FEL.
- CANNON 37N-3HZ TO BE AT 517' FNL, 814' FEL.
- BOTTOM HOLE AT 460' FSL & 480' FEL.

PREPARED BY:



KERR-MCGEE OIL & GAS ONSHORE LP

FIELD DATE: 07-12-12	PAD NAME: CANNON 4 PAD
DRAWING DATE: 12-31-12	SURFACE LOCATION: WELD COUNTY, COLORADO
BY: SJM	CHECKED: TJN
NE 1/4 NE 1/4, SEC. 3, T2N, R66W, 6TH P.M.	

