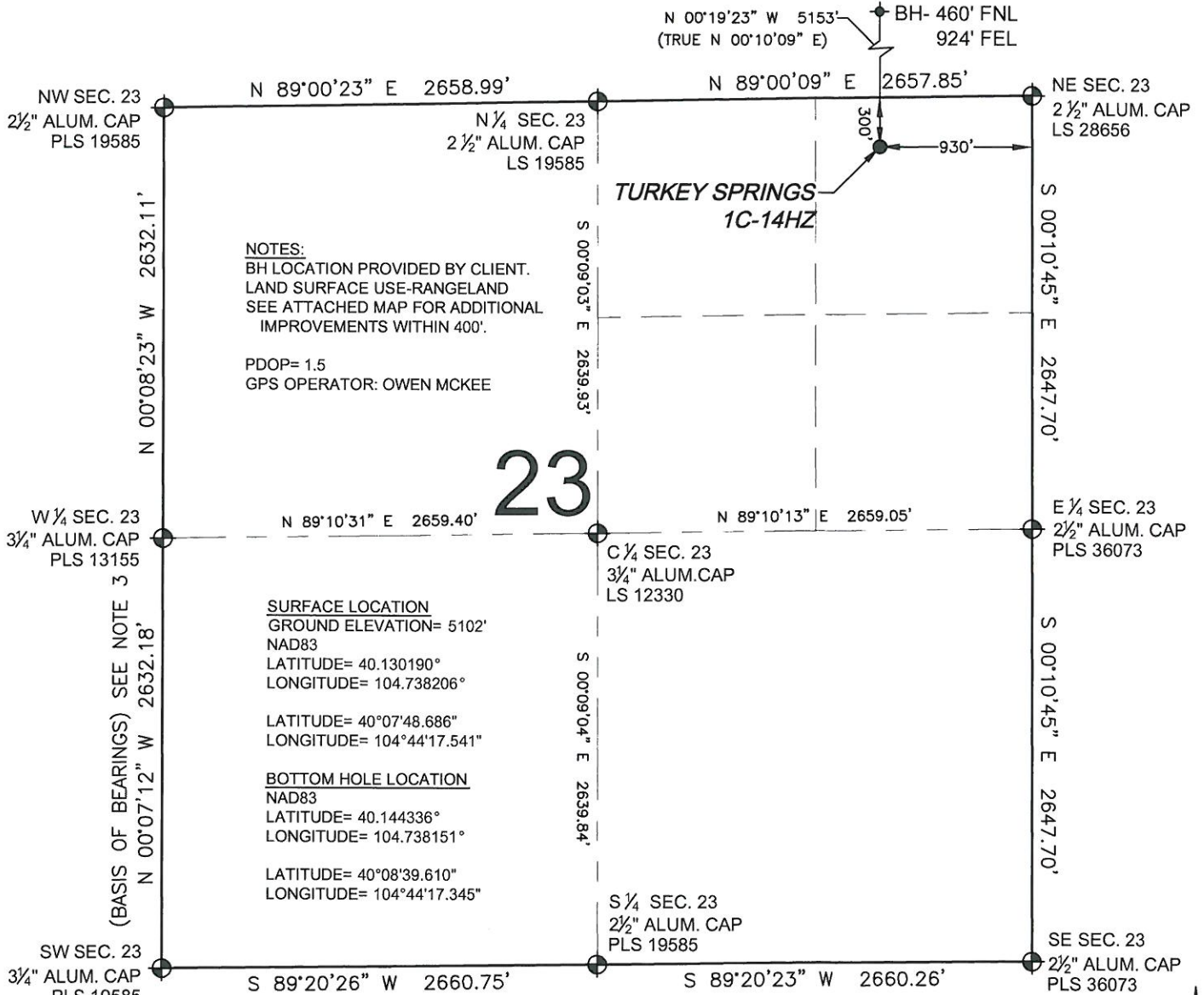


# WELL LOCATION CERT: TURKEY SPRINGS 1C-14HZ

SECTION 23, TOWNSHIP 2 NORTH, RANGE 66 WEST, 6TH P.M.



**NOTES:**  
 BH LOCATION PROVIDED BY CLIENT.  
 LAND SURFACE USE-RANGELAND  
 SEE ATTACHED MAP FOR ADDITIONAL  
 IMPROVEMENTS WITHIN 400'.  
 PDOP= 1.5  
 GPS OPERATOR: OWEN MCKEE

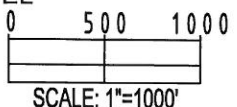
**SURFACE LOCATION**  
 GROUND ELEVATION= 5102'  
 NAD83  
 LATITUDE= 40.130190°  
 LONGITUDE= 104.738206°  
 LATITUDE= 40°07'48.686"  
 LONGITUDE= 104°44'17.541"

**BOTTOM HOLE LOCATION**  
 NAD83  
 LATITUDE= 40.144336°  
 LONGITUDE= 104.738151°  
 LATITUDE= 40°08'39.610"  
 LONGITUDE= 104°44'17.345"

WELL TURKEY SPRINGS 1C-14HZ TO BE LOCATED 300' FNL AND 930' FEL

**LEGEND**

- ⊕ = EXISTING MONUMENT    ◆ = BOTTOM HOLE
- = PROPOSED WELL        ◆ = EXISTING WELL
- BH = BOTTOM HOLE



- NOTES:**
- THIS FIELD SURVEY CONFORMS TO THE MINIMUM STANDARDS SET BY THE C.O.G.C.C., RULE NO. 215
  - HORIZONTAL POSITIONS AND ORTHOMETRIC ELEVATIONS SHOWN AT THE WELL HEAD, ARE BASED ON GPS-RTK POSITIONS DERIVED FROM MINIMUM 2-HOUR STATIC OBSERVATIONS CORRECTED BY THE NATIONAL GEODETIC SURVEY ONLINE POSITIONING USER SERVICE, O.P.U.S. DATUM: HORIZONTAL = NAD83/2007, VERTICAL = NAVD88
  - THE BASIS OF BEARINGS ARE STATE PLANE COORDINATE SYSTEM GRID BEARINGS SHOWN HEREON BETWEEN THE DESCRIBED THE MONUMENTS SHOWN HEREON.
  - GRID DISTANCES ARE SHOWN, AS MEASURED IN THE FIELD, WITH TIES TO WELLS MEASURED PERPENDICULAR TO SECTION LINES.

I, MARK A. HALL, A LICENSED PROFESSIONAL LAND SURVEYOR IN THE STATE OF COLORADO DO HEREBY CERTIFY TO **KERR-MCGEE OIL & GAS ONSHORE LP**, THAT THE SURVEY AND WELL LOCATION CERTIFICATE SHOWN HEREON WERE DONE BY ME OR UNDER MY DIRECT SUPERVISION AND THAT THE DRAWING SHOWN HEREON ACCURATELY DEPICTS THE PROPOSED LOCATION OF THE WELL. THIS CERTIFICATE DOES NOT REPRESENT A LAND SURVEY PLAT OR IMPROVEMENT SURVEY PLAT AS DEFINED BY C.R.S. 38-51-102 AND CANNOT BE RELIED UPON TO DETERMINE OWNERSHIP.



MARK A. HALL, PLS 36073  
 COLORADO LICENSED PROFESSIONAL LAND SURVEYOR  
 FOR AND ON BEHALF OF P.F.S., LLC

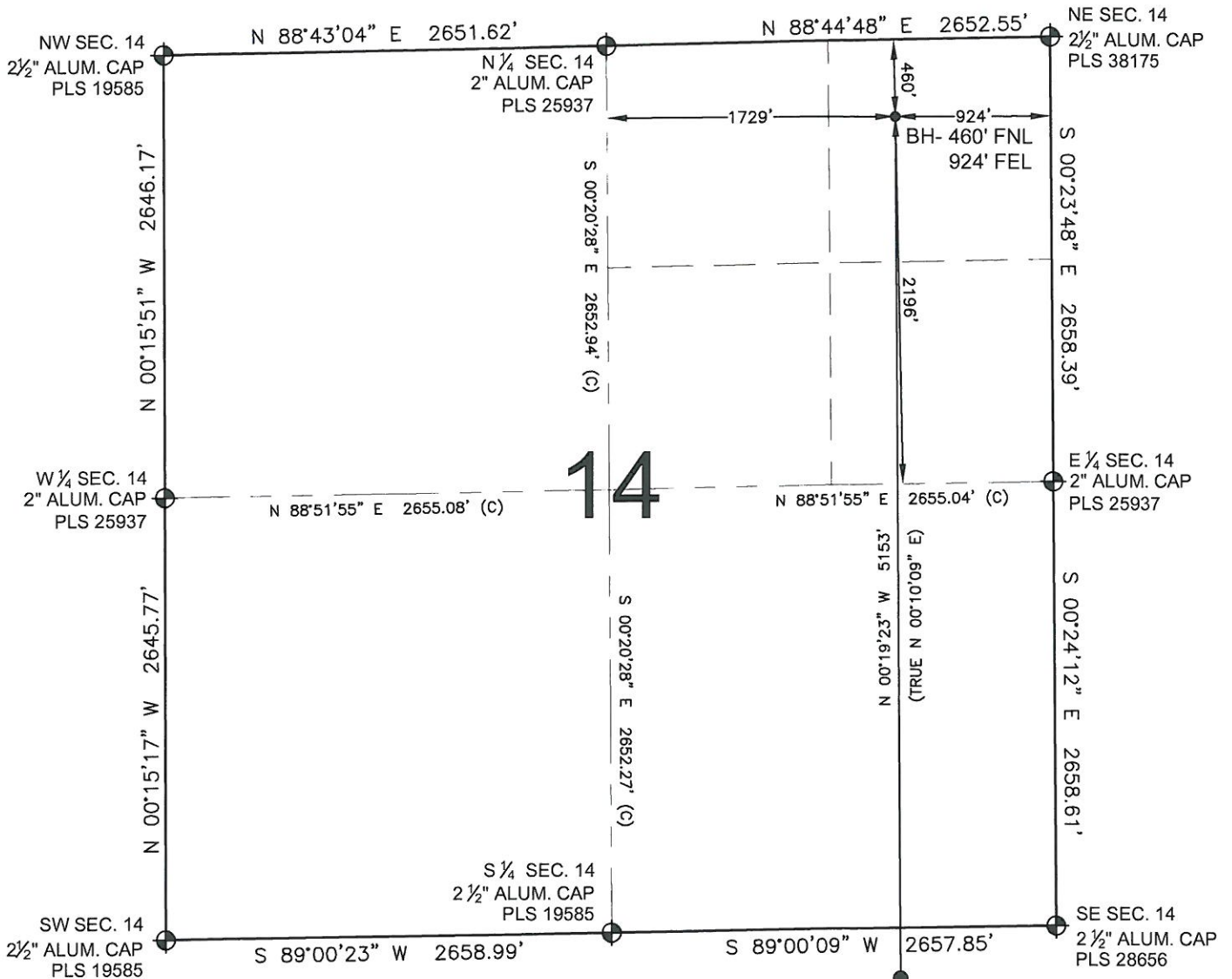
**NOTICE:** ACCORDING TO COLORADO LAW YOU MUST COMMENCE ANY LEGAL ACTION BASED UPON ANY DEFECT IN THIS SURVEY WITHIN THREE YEARS AFTER YOU FIRST DISCOVER SUCH DEFECT. IN NO EVENT MAY ANY ACTION BASED UPON ANY DEFECT IN THIS SURVEY BE COMMENCED MORE THAN TEN YEARS FROM THIS SAID DATE OF THIS CERTIFICATION SHOWN HEREON.

SHEET 1 OF 2

PREPARED BY:  Petroleum Field Services, LLC 1801 W. 15th Ave. Denver, CO 80204	FIELD DATE: 07-20-12	SURFACE LOCATION: NE 1/4 NE 1/4, SEC. 23, T2N, R66W, 6TH P.M. WELD COUNTY, COLORADO
	DRAWING DATE: 09-13-12	BY: SMF    REV: MLP

# WELL LOCATION CERT: TURKEY SPRINGS 1C-14HZ

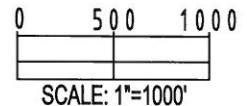
SECTION 14, TOWNSHIP 2 NORTH, RANGE 66 WEST, 6TH P.M.



### LEGEND

- ⊙ = EXISTING MONUMENT
- ⬤ = PROPOSED WELL
- BH = BOTTOM HOLE
- ⬥ = BOTTOM HOLE
- ◆ = EXISTING WELL

TURKEY SPRINGS  
1C-14HZ



### NOTES:

1. THIS FIELD SURVEY CONFORMS TO THE MINIMUM STANDARDS SET BY THE C.O.G.C.C., RULE NO. 215
2. HORIZONTAL POSITIONS AND ORTHOMETRIC ELEVATIONS SHOWN AT THE WELL HEAD, ARE BASED ON GPS-RTK POSITIONS DERIVED FROM MINIMUM 2-HOUR STATIC OBSERVATIONS CORRECTED BY THE NATIONAL GEODETIC SURVEY ONLINE POSITIONING USER SERVICE, O.P.U.S. DATUM: HORIZONTAL = NAD83/2007, VERTICAL = NAVD88
3. THE BASIS OF BEARINGS ARE STATE PLANE COORDINATE SYSTEM GRID BEARINGS SHOWN HEREON BETWEEN THE DESCRIBED THE MONUMENTS SHOWN HEREON.
4. GRID DISTANCES ARE SHOWN, AS MEASURED IN THE FIELD, WITH TIES TO WELLS MEASURED PERPENDICULAR TO SECTION LINES.

SHEET 2 OF 2



MARK A. HALL, PLS 36073  
COLORADO LICENSED PROFESSIONAL LAND SURVEYOR  
FOR AND ON BEHALF OF P.F.S., LLC

PREPARED BY:  Petroleum Field Services, LLC 1801 W. 138th Ave. Denver, CO 80204	FIELD DATE: 07-20-12	SURFACE LOCATION: NE 1/4 NE 1/4, SEC. 23, T2N, R66W, 6TH P.M.
	DRAWING DATE: 09-13-12	BY: SMF REV: MLP

NOTICE: ACCORDING TO COLORADO LAW YOU MUST COMMENCE ANY LEGAL ACTION BASED UPON ANY DEFECT IN THIS SURVEY WITHIN THREE YEARS AFTER YOU FIRST DISCOVER SUCH DEFECT. IN NO EVENT MAY ANY ACTION BASED UPON ANY DEFECT IN THIS SURVEY BE COMMENCED MORE THAN TEN YEARS FROM THIS SAID DATE OF THIS CERTIFICATION SHOWN HEREON.