



09 November 2012

Energy Minerals Corporation  
1630 Denver Club Building  
Denver, Colorado 80202

Certified Mail  
Return Receipt  
7011 3500 0001 2342 4135

Re: Notice of 318A(I).a.(4)D. Proposed Horizontal Wellbore Spacing Unit  
Antelope K-O-18HNB

To Whom This May Concern:

Bonanza Creek Energy, Inc. (Bonanza) intends to permit, drill and operate the referenced Horizontal Well. The well surface hole location is to be located in NW1/4 NW1/4 (624' FNL, 1278' FWL) Sec. 18-T5N-R62W, Weld County, Colorado.

As defined by the Colorado Oil and Gas Conservation Commission (COGCC) Rule 318A(I).a.(4)D., the Horizontal Wellbore Spacing Unit is proposed as follows: E/2 W/2 & W/2 E/2 Section 18, Township 5N, Range 62W, 6<sup>th</sup> PM, Weld County, CO. The planned top of production zone is 510' FNL, 2374' FWL; and the planned bottom of production zone is 470' FSL, 2415' FWL. For your reference, a map depicting the standup 320 acre proposed spacing unit and surveyor's plat are attached.

The anticipated spud date is on or after January 2, 2013.

Energy Minerals Corporation is identified as a mineral owner in a portion of the proposed spacing unit. Per rule 318A(I).e.(6), Energy Minerals Corporation has 30 days from the date of this letter to object to the proposed spacing unit, in writing, to Bonanza, with a copy provided directly to the COGCC Director.

If there is no objection to the proposed spacing unit, Bonanza respectfully requests you sign and return the waiver form on the next page. For your convenience, a self-addressed stamped envelope (SASE) is provided.

Please do not hesitate to call or email me, directly, at (720) 440-6112 or kcaplan@bonanzacrk.com, should you have any questions pertaining to this matter.

Thank you for your cooperation.

Sincerely,  
BONANZA CREEK ENERGY, INC

A handwritten signature in blue ink that reads 'Keith S. Caplan'.

Keith S. Caplan  
Sr. Regulatory Specialist

enclosures



**Mineral Lease Holder's Response Letter**  
**Antelope K-O-18HNB Proposed Wellbore Spacing Unit**

Having reviewed Bonanza Creek Energy, Inc.'s **Notice of 318A(I).a.(4)D. Proposed Horizontal Wellbore Spacing Unit** dated **08 November 2012**, the undersigned Mineral Lease Owner, hereby makes the following response to the issue of **Notice and Consultation**; to wit –

The undersigned Mineral Lease Owner, **Energy Minerals Corporation** or its Designated Representative, agrees to **WAIVE** the right to object to the formation of the proposed wellbore spacing unit, as defined by the Colorado Oil and Gas Conservation Commission ("COGCC").

YES: \_\_\_\_\_ NO: \_\_\_\_\_

Signed and Dated this \_\_\_\_\_ day of \_\_\_\_\_, **2012**.

**MINERAL OWNER or DESIGNATED REPRESENTATIVE:**

By \_\_\_\_\_ By \_\_\_\_\_

Title: \_\_\_\_\_ Title: \_\_\_\_\_

**Designated Representative (if any)**

Designated Representative (Agent): \_\_\_\_\_

Address: \_\_\_\_\_

Telephone: Home \_\_\_\_\_ Work \_\_\_\_\_



Lat40°, Inc. 1635 Foxtrail Drive, Suite 325 Loveland, CO 970-776-3321

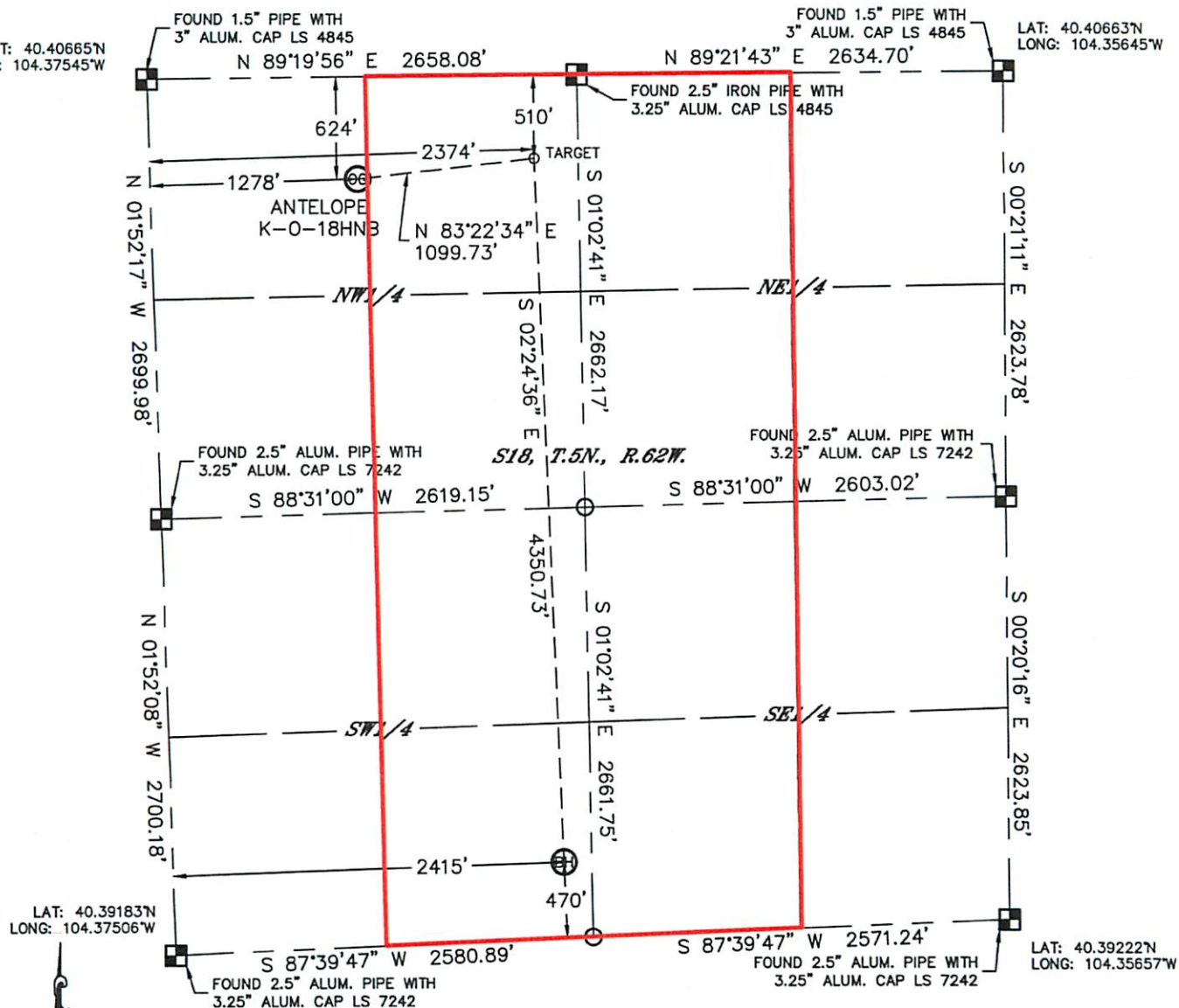
## WELL LOCATION CERTIFICATE

THIS MAP DOES NOT REPRESENT A BOUNDARY SURVEY

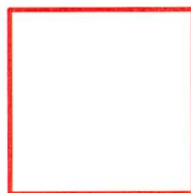
SECTION: 18  
TOWNSHIP: 5N  
RANGE: 62W

LAT: 40.40665°N  
LONG: 104.37545°W

LAT: 40.40663°N  
LONG: 104.35645°W



In accordance with a request from Keith Caplan with BONANZA CREEK ENERGY, INC. Lat40°, Inc. has determined the surface location of the ANTELOPE K-O-18HNB to be 624' from the NORTH line and 1278' from the WEST line and the bottom hole to be 470' from the SOUTH line and 2415' from the WEST line as measured at right angles from the section lines of Section 18, Township 5 North, Range 62 West.



Wellbore Spacing Unit Outline



### Wellbore Spacing Unit Map

08 June 2012 ksc

Antelope K-O-18HNB  
E/2 W/2 & W/2 E/2 Sec 18 T5N R62W 6th PM  
Weld County, Colorado



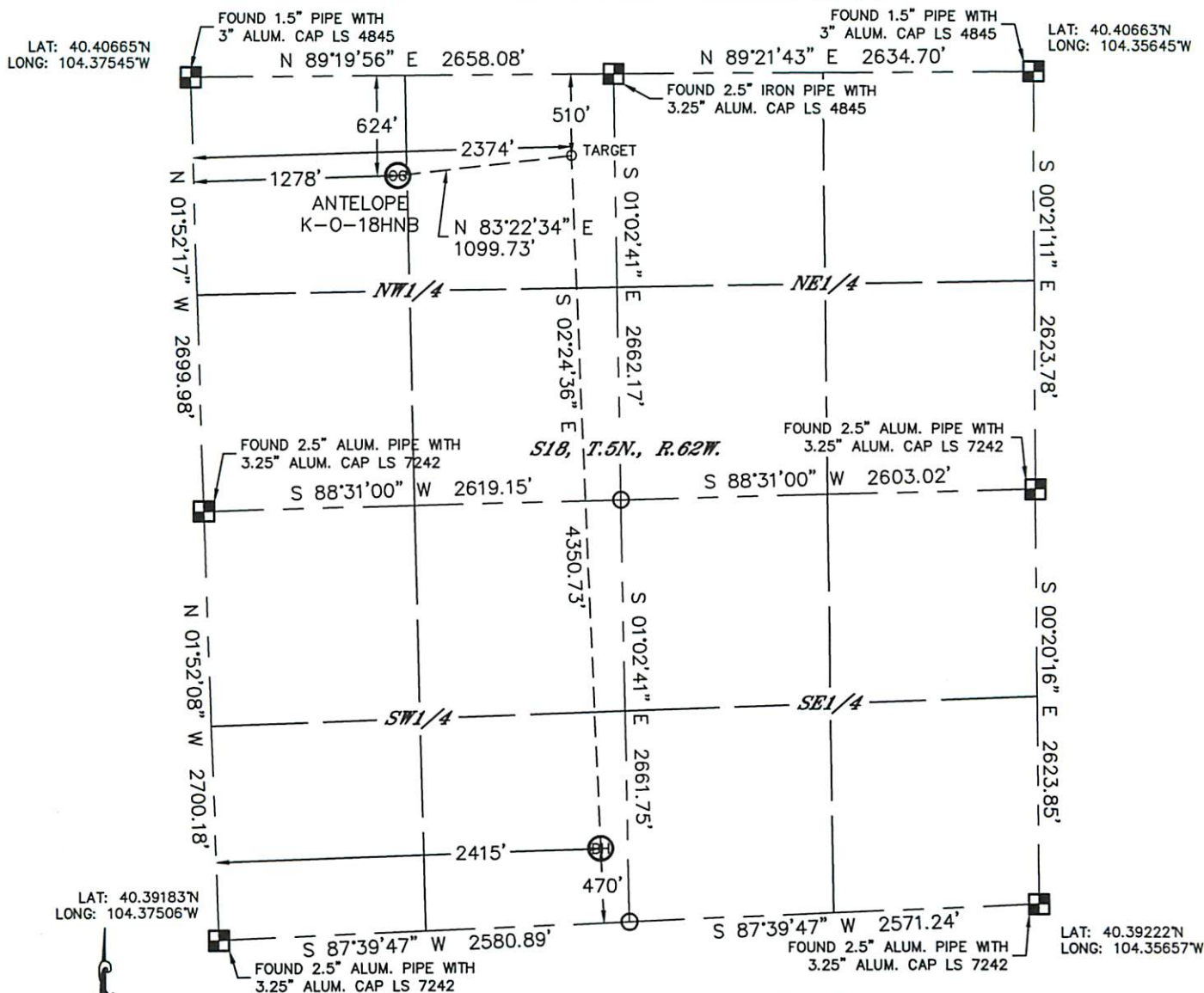


Lat40°, Inc. 1635 Foxtrail Drive, Suite 325 Loveland, CO 970-776-3321

# WELL LOCATION CERTIFICATE

SECTION: 18  
TOWNSHIP: 5N  
RANGE: 62W

THIS MAP DOES NOT REPRESENT A BOUNDARY SURVEY



In accordance with a request from Keith Caplan with BONANZA CREEK ENERGY, INC. Lat40°, Inc. has determined the surface location of the ANTELOPE K-O-18HNB to be 624' from the NORTH line and 1278' from the WEST line and the bottom hole to be 470' from the SOUTH line and 2415' from the WEST line as measured at right angles from the section lines of Section 18, Township 5 North, Range 62 West of the Sixth Principal Meridian, County of Weld, State of Colorado.

I hereby state that this Well Location Certificate was prepared by me, or under my direct supervision, that the fieldwork was completed on 10/29/2012, for and on behalf of BONANZA CREEK ENERGY, INC. That this is not a Land Survey Plat or an Improvement Survey Plat, and that it is not to be relied upon for establishment of fence, building, or other future improvement lines.

## NOTE:

- 1) Bearings shown are Grid Bearings of the Colorado State Plane Coordinate System, North Zone, North American Datum 1983/2007. The lined dimensions as contained herein are based upon the "U.S. Survey Foot."
- 2) Ground elevations are based on an observed GPS elevation (NAVD 1988 DATUM).
- 3) IMPROVEMENTS: See LOCATION DRAWING for all visible improvements within 400' of disturbed area.
- 4) SURFACE USE: EXISTING PAD
- 5) INSTRUMENT OPERATOR: BRIAN ROTTINGHAUS

## SURFACE LOCATION

LAT: 40.40493N  
LONG: 104.37081W  
PDOP: 2.0  
ELEV: 4614'  
1/4,1/4: NW1/4NW1/4  
NEAREST PROPERTY LINE: 624' NORTH

## TARGET

LAT: 40.40524N  
LONG: 104.36689W  
1/4,1/4: NE1/4NW1/4

## BOTTOM HOLE

LAT: 40.39330N  
LONG: 104.36643W  
1/4,1/4: SE1/4SW1/4

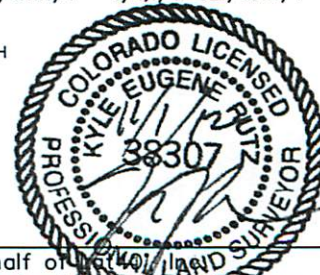
## NOTE

According to Colorado law, you must commence any legal action based upon any defect in this W.L.C. within three years after you discover such defect. In no event, may any action based upon any defect in this survey be commenced more than ten years after the date of the certificate shown hereon. (13-80-105 C.R.S.)

## LEGEND

- = ALIQUOT MONUMENT AS DESCRIBED
- = CALCULATED POSITION

Kyle E. Rutz—On behalf of  
Colorado Licensed Professional Land Surveyor No. 38307  
PROJECT#: 2012071

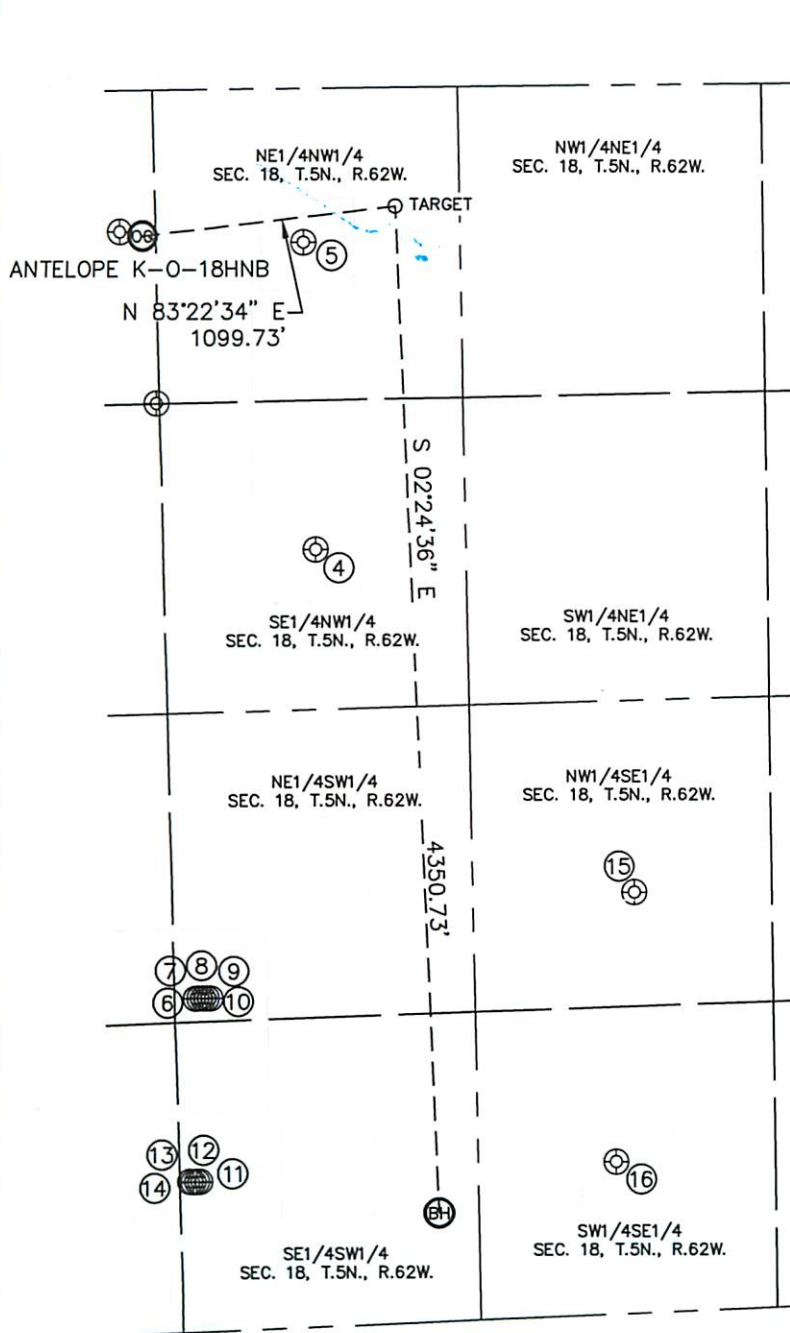


Lat40°, Inc. 1635 Foxtrail Drive, Suite 325 Loveland, CO 970-776-3321

# SITE SKETCH

ANTELOPE K-O-18HNB

SECTION: 18  
TOWNSHIP: 5N  
RANGE: 62W



- ④  
ANTELOPE 22-18  
SE1/4NW1/4  
1979' FNL  
1981' FWL  
LAT-40.40121'N  
LONG-104.36819'W  
PDOP: 1.5  
ELEV: 4618'

⑤  
ANTELOPE 21-18  
NE1/4NW1/4  
660' FNL  
1975' FWL  
LAT-40.40483'N  
LONG-104.36831'W  
PDOP: 1.4  
ELEV: 4617'

⑥  
ANTELOPE 14-18  
NE1/4SW1/4  
1442' FSL  
1399' FWL  
LAT-40.39589'N  
LONG-104.37014'W  
PDOP: 2.3  
ELEV: 4601'

⑦  
ANTELOPE 13-18  
NE1/4SW1/4  
1442' FSL  
1414' FWL  
LAT-40.39589'N  
LONG-104.37009'W  
PDOP: 1.2  
ELEV: 4601'

⑧  
ANTELOPE 18C  
NE1/4SW1/4  
1441' FSL  
1429' FWL  
LAT-40.39589'N  
LONG-104.37003'W  
PDOP: 1.8  
ELEV: 4601'

⑨  
ANTELOPE 24-18  
NE1/4SW1/4  
1441' FSL  
1446' FWL  
LAT-40.39589'N  
LONG-104.36997'W  
PDOP: 1.7  
ELEV: 4601'

⑩  
ANTELOPE 23-18  
NE1/4SW1/4  
1440' FSL  
1461' FWL  
LAT-40.39589'N  
LONG-104.36992'W  
PDOP: 1.2  
ELEV: 4601'

⑪  
ANTELOPE N-18  
SE1/4SW1/4  
650' FSL  
1389' FWL  
LAT-40.39372'N  
LONG-104.37012'W  
PDOP: 2.6  
ELEV: 4597'

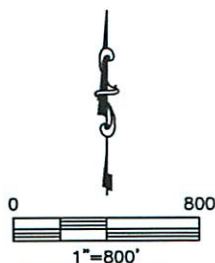
⑫  
ANTELOPE H-18  
SE1/4SW1/4  
650' FSL  
1374' FWL  
LAT-40.39372'N  
LONG-104.37018'W  
PDOP: 1.9  
ELEV: 4597'

⑬  
ANTELOPE E-18  
SE1/4SW1/4  
651' FSL  
1360' FWL  
LAT-40.39372'N  
LONG-104.37023'W  
PDOP: 2.7  
ELEV: 4597'

⑭  
ANTELOPE D-18  
SE1/4SW1/4  
652' FSL  
1344' FWL  
LAT-40.39372'N  
LONG-104.37028'W  
PDOP: 1.9  
ELEV: 4597'

⑮  
ANTELOPE 33-18  
NW1/4SE1/4  
1820' FSL  
1896' FEL  
LAT-40.39708'N  
LONG-104.36333'W  
PDOP: 1.3  
ELEV: 4630'

⑯  
ANTELOPE 34-18  
SW1/4SE1/4  
657' FSL  
1982' FEL  
LAT-40.39388'N  
LONG-104.36367'W  
PDOP: 1.4  
ELEV: 4620'



DATE: 11/1/2012  
PROJECT#: 2012071