

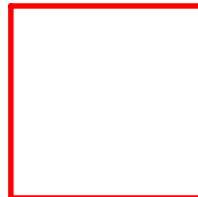
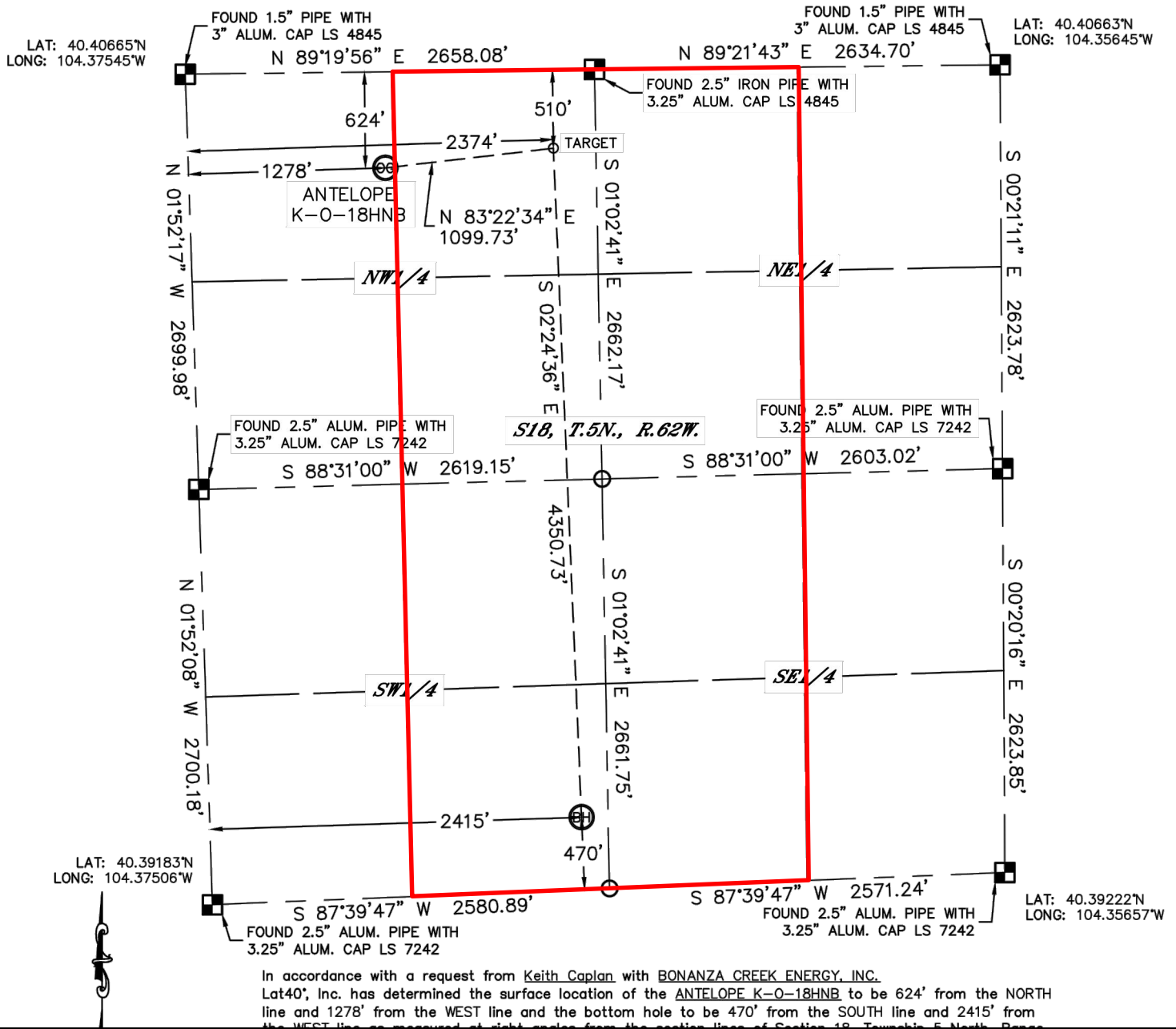


Lat40°, Inc. 1635 Foxtrail Drive, Suite 325 Loveland, CO 970-776-3321

WELL LOCATION CERTIFICATE

THIS MAP DOES NOT REPRESENT A BOUNDARY SURVEY

SECTION: 18
TOWNSHIP: 5N
RANGE: 62W



Wellbore Spacing Unit Outline



Wellbore Spacing Unit Map

08 June 2012 ksc

Antelope K-O-18HNB
E/2 W/2 & W/2 E/2 Sec 18 T5N R62W 6th PM
Weld County, Colorado