

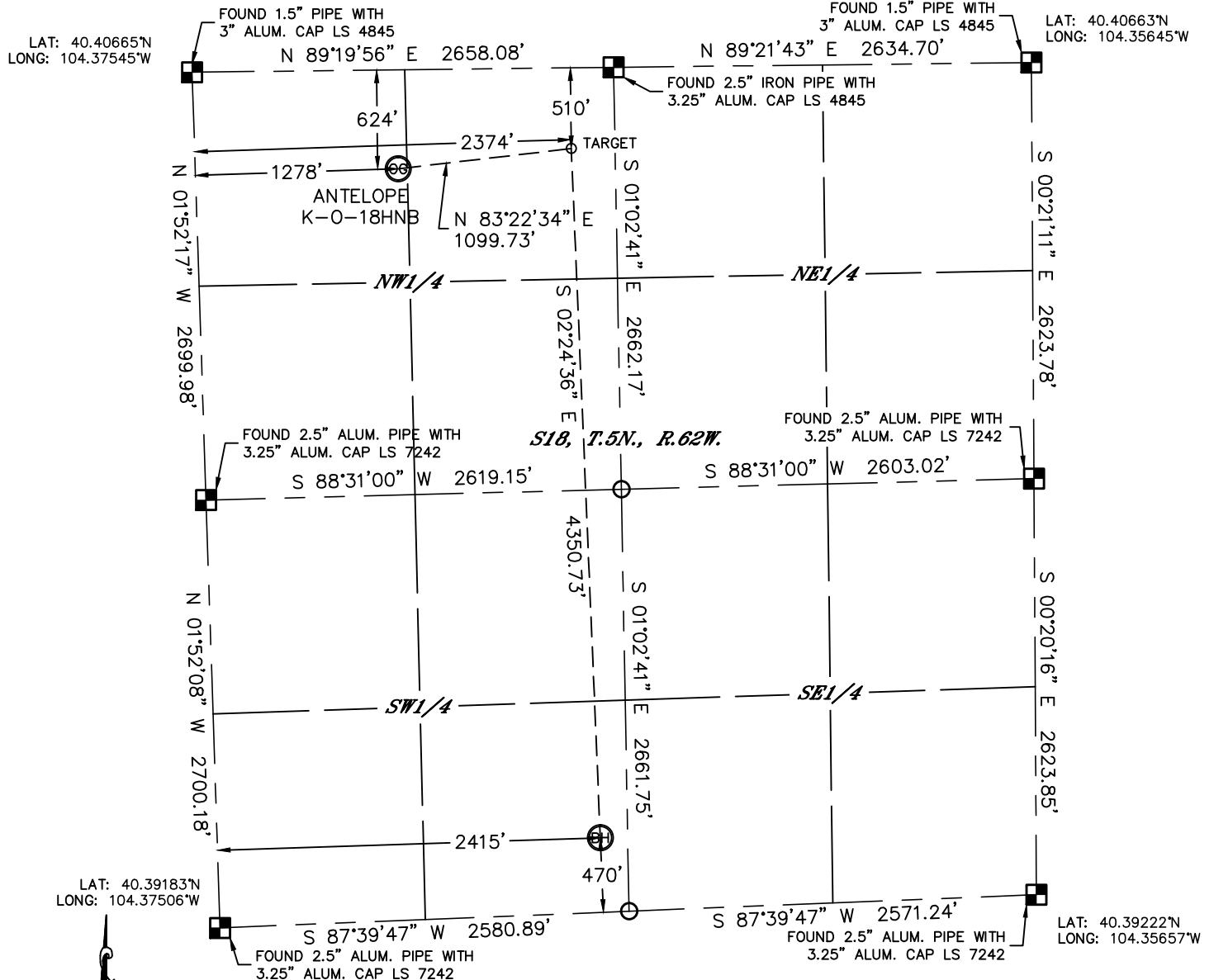


Lat40°, Inc. 1635 Foxtrail Drive, Suite 325 Loveland, CO 970-776-3321

WELL LOCATION CERTIFICATE

THIS MAP DOES NOT REPRESENT A BOUNDARY SURVEY

SECTION: 18
TOWNSHIP: 5N
RANGE: 62W



In accordance with a request from Keith Caplan with BONANZA CREEK ENERGY, INC. Lat40°, Inc. has determined the surface location of the ANTELOPE K-O-18HNB to be 624' from the NORTH line and 1278' from the WEST line and the bottom hole to be 470' from the SOUTH line and 2415' from the WEST line as measured at right angles from the section lines of Section 18, Township 5 North, Range 62 West of the Sixth Principal Meridian, County of Weld, State of Colorado.

I hereby state that this Well Location Certificate was prepared by me, or under my direct supervision, that the fieldwork was completed on 10/29/2012, for and on behalf of BONANZA CREEK ENERGY, INC. That this is not a Land Survey Plat or an Improvement Survey Plat, and that it is not to be relied upon for establishment of fence, building, or other future improvement lines.

NOTE:

- 1) Bearings shown are Grid Bearings of the Colorado State Plane Coordinate System, North Zone, North American Datum 1983/2007. The lineal dimensions as contained herein are based upon the "U.S. Survey Foot."
- 2) Ground elevations are based on an observed GPS elevation (NAVD 1988 DATUM).
- 3) IMPROVEMENTS: See LOCATION DRAWING for all visible improvements within 400' of disturbed area.
- 4) SURFACE USE: EXISTING PAD
- 5) INSTRUMENT OPERATOR: BRIAN ROTTINGHAUS

SURFACE LOCATION

LAT: 40.40493°N
LONG: 104.37081°W
PDOP: 2.0
ELEV: 4614'
1/4,1/4: NW1/4NW1/4
NEAREST PROPERTY LINE: 624' NORTH

TARGET

LAT: 40.40524°N
LONG: 104.36689°W
1/4,1/4: NE1/4NW1/4

BOTTOM HOLE

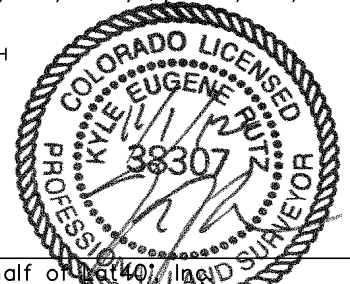
LAT: 40.39330°N
LONG: 104.36643°W
1/4,1/4: SE1/4SW1/4

NOTE

According to Colorado law, you must commence any legal action based upon any defect in this W.L.C. within three years after you discover such defect. In no event, may any action based upon any defect in this survey be commenced more than ten years after the date of the certificate shown hereon. (13-80-105 C.R.S.)

LEGEND

- = ALIQUOT MONUMENT AS DESCRIBED
○ = CALCULATED POSITION



Kyle E. Rutz—On behalf of Lat40°, Inc.
Colorado Licensed Professional Land Surveyor No. 38307
DATE: 10/31/2012
PROJECT#: 2012071

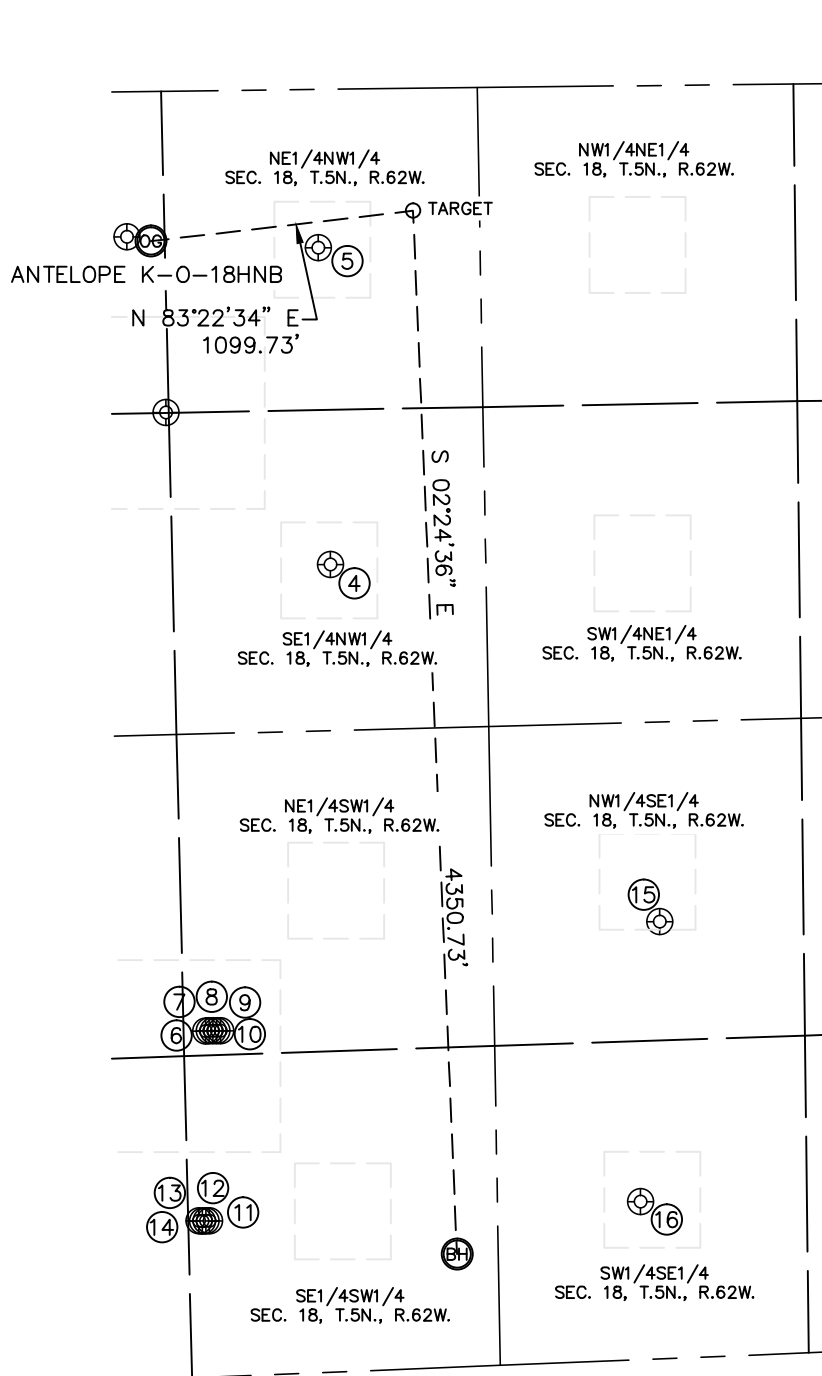


Lat40°, Inc. 1635 Foxtrail Drive, Suite 325 Loveland, CO 970-776-3321

SITE SKETCH

ANTELOPE K-O-18HNB

SECTION: 18
TOWNSHIP: 5N
RANGE: 62W



④
ANTELOPE 22-18
SE1/4NW1/4
1979' FNL
1981' FWL
LAT-40.40121N
LONG-104.36819W
PDOP: 1.5
ELEV: 4618'

⑤
ANTELOPE 21-18
NE1/4NW1/4
660' FNL
1975' FWL
LAT-40.40483N
LONG-104.36831W
PDOP: 1.4
ELEV: 4617'

⑥
ANTELOPE 14-18
NE1/4SW1/4
1442' FSL
1399' FWL
LAT-40.39589N
LONG-104.37014W
PDOP: 2.3
ELEV: 4601'

⑦
ANTELOPE 13-18
NE1/4SW1/4
1442' FSL
1414' FWL
LAT-40.39589N
LONG-104.37009W
PDOP: 1.2
ELEV: 4601'

⑧
ANTELOPE 18C
NE1/4SW1/4
1441' FSL
1429' FWL
LAT-40.39589N
LONG-104.37003W
PDOP: 1.8
ELEV: 4601'

⑨
ANTELOPE 24-18
NE1/4SW1/4
1441' FSL
1446' FWL
LAT-40.39589N
LONG-104.36997W
PDOP: 1.7
ELEV: 4601'

⑩
ANTELOPE 23-18
NE1/4SW1/4
1440' FSL
1461' FWL
LAT-40.39589N
LONG-104.36992W
PDOP: 1.2
ELEV: 4601'

⑪
ANTELOPE N-18
SE1/4SW1/4
650' FSL
1389' FWL
LAT-40.39372N
LONG-104.37012W
PDOP: 2.6
ELEV: 4597'

⑫
ANTELOPE H-18
SE1/4SW1/4
650' FSL
1374' FWL
LAT-40.39372N
LONG-104.37018W
PDOP: 1.9
ELEV: 4597'

⑬
ANTELOPE E-18
SE1/4SW1/4
651' FSL
1360' FWL
LAT-40.39372N
LONG-104.37023W
PDOP: 2.7
ELEV: 4597'

⑭
ANTELOPE D-18
SE1/4SW1/4
652' FSL
1344' FWL
LAT-40.39372N
LONG-104.37028W
PDOP: 1.9
ELEV: 4597'

⑮
ANTELOPE 33-18
NW1/4SE1/4
1820' FSL
1896' FEL
LAT-40.39708N
LONG-104.36333W
PDOP: 1.3
ELEV: 4630'

⑯
ANTELOPE 34-18
SW1/4SE1/4
657' FSL
1982' FEL
LAT-40.39388N
LONG-104.36367W
PDOP: 1.4
ELEV: 4620'

