

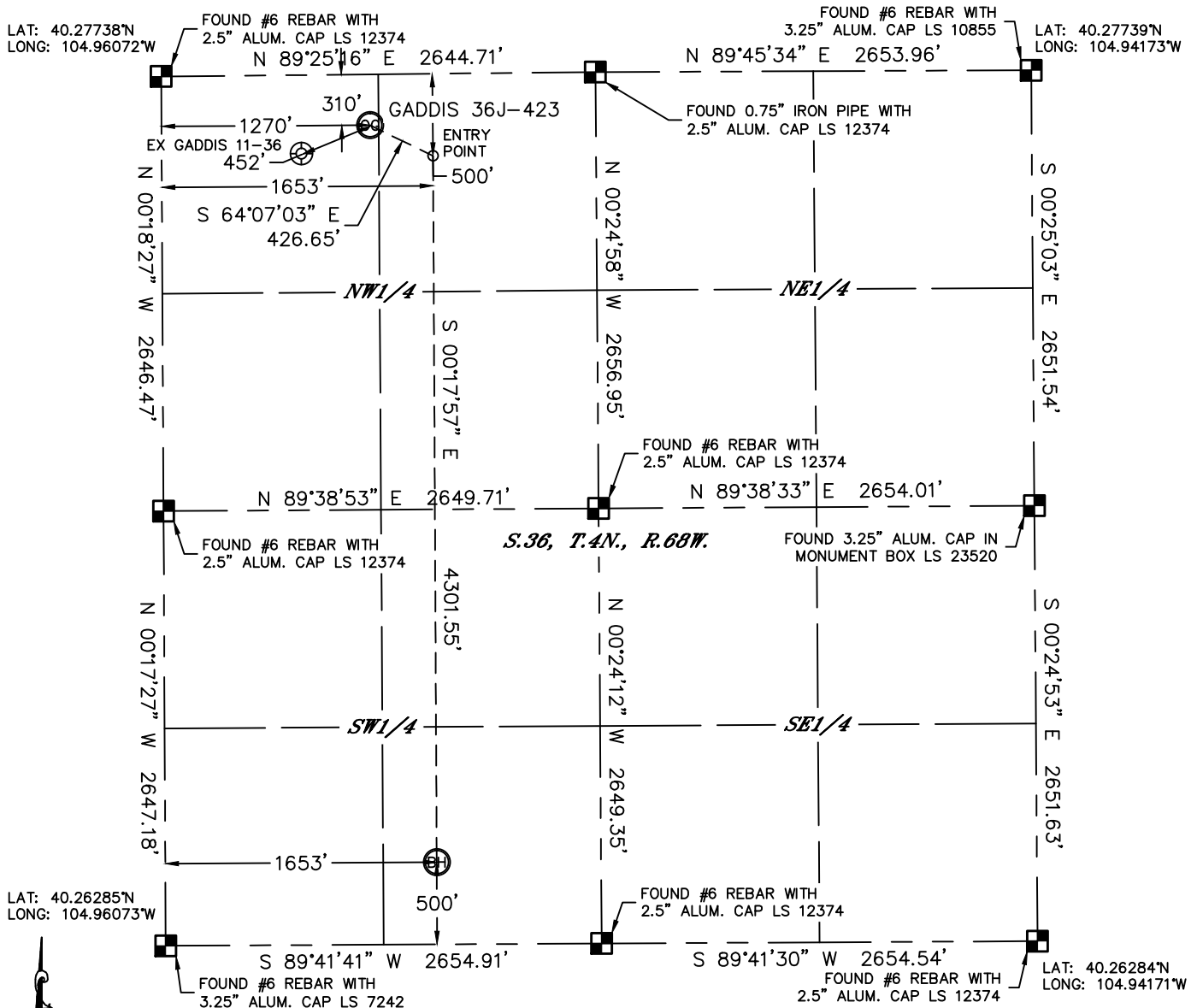


Lat40°, Inc. 1635 Foxtrail Drive, Suite 325 Loveland, CO 970-776-3321

WELL LOCATION CERTIFICATE

THIS MAP DOES NOT REPRESENT A BOUNDARY SURVEY

SECTION: 36
TOWNSHIP: 4N
RANGE: 68W



In accordance with a request from Mac Neumann with PDC ENERGY Lat40°, Inc. has determined the surface location of the GADDIS 36J-423 to be 310' from the NORTH line and 1270' from the WEST line and the bottom hole to be 500' from the SOUTH line and 1653' from the WEST line as measured at right angles from the section lines of Section 36, Township 4 North, Range 68 West of the Sixth Principal Meridian, County of Weld, State of Colorado.

I hereby state that this Well Location Certificate was prepared by me, or under my direct supervision, that the fieldwork was completed on 11/13/2012, for and on behalf of PDC ENERGY. That this is not a Land Survey Plat or an Improvement Survey Plat, and that it is not to be relied upon for establishment of fence, building, or other future improvement lines.

NOTE:

- 1) Bearings shown are Grid Bearings of the Colorado State Plane Coordinate System, North Zone, North American Datum 1983/2007. The lineal dimensions as contained herein are based upon the "U.S. Survey Foot."
- 2) Ground elevations are based on an observed GPS elevation (NAVD 1988 DATUM).
- 3) NEAREST EXISTING WELL: GADDIS 11-36, 452'
- 4) IMPROVEMENTS: See LOCATION DRAWING for all visible improvements within 400' of disturbed area.
- 5) SURFACE USE: CROPLAND
- 6) INSTRUMENT OPERATOR: WYATT HALL

NOTE

According to Colorado law, you must commence any legal action based upon any defect in this W.L.C. within three years after you discover such defect. In no event, may any action based upon any defect in this survey be commenced more than ten years after the date of the certificate shown hereon. (13-80-105 C.R.S.)

LEGEND

- = ALIQUOT MONUMENT AS DESCRIBED
- = CALCULATED POSITION

SURFACE LOCATION

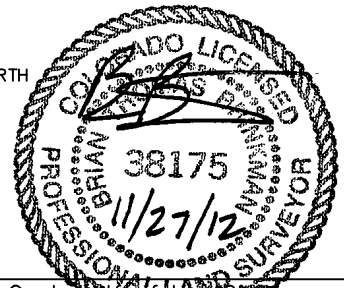
LAT: 40.27654°N
LONG: 104.95617°W
PDOP: 1.2
ELEV: 5057'
1/4, 1/4: NW1/4NW1/4
NEAREST PROPERTY LINE: 310' NORTH

ENTRY POINT

LAT: 40.27603°N
LONG: 104.95480°W

BOTTOM HOLE

LAT: 40.26422°N
LONG: 104.95481°W



Brian T. Brinkman—On behalf of Lat40°, Inc.
Colorado Licensed Professional
Land Surveyor No. 38175
DATE: 11/27/2012
PROJECT#: 2011351

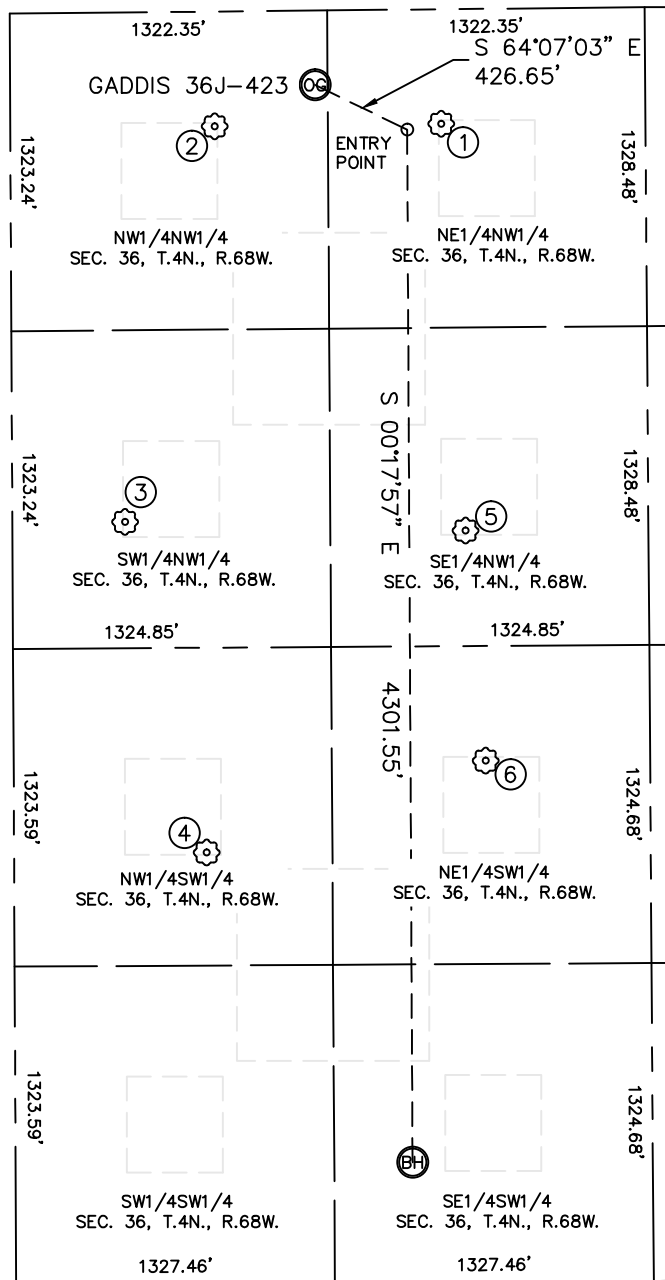


Lat40°, Inc. 1635 Foxtrail Drive, Suite 325 Loveland, CO 970-776-3321

SITE SKETCH

GADDIS 36J-423

SECTION: 36
TOWNSHIP: 4N
RANGE: 68W



①

GADDIS 21-36
NE1/4NW1/4
477' FNL
1795' FWL
LAT-40.27609°N
LONG-104.95429°W
PDOP: 1.2
ELEV: 5045'

②

GADDIS 11-36
NW1/4NW1/4
478' FNL
851' FWL
LAT-40.27608°N
LONG-104.95767°W
PDOP: 1.5
ELEV: 5057'

③

GADDIS 12-36
SW1/4NW1/4
2122' FNL
469' FWL
LAT-40.27156°N
LONG-104.95904°W
PDOP: 2.6
ELEV: 5056'

④

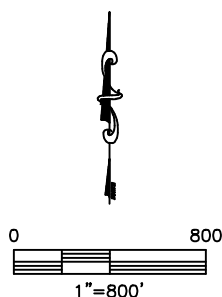
STATE CORSAIR 13-36
NW1/4SW1/4
1794' FSL
802' FWL
LAT-40.26777°N
LONG-104.95785°W
PDOP: 2.7
ELEV: 5030'

⑤

GADDIS 22-36
SE1/4NW1/4
2173' FNL
1887' FWL
LAT-40.27144°N
LONG-104.95396°W
PDOP: 2.1
ELEV: 5022'

⑥

STATE CORSAIR 23-36
NE1/4SW1/4
2170' FSL
1965' FWL
LAT-40.26880°N
LONG-104.95368°W
PDOP: 1.2
ELEV: 5010'



DATE: 11/27/2012
PROJECT#: 2011351