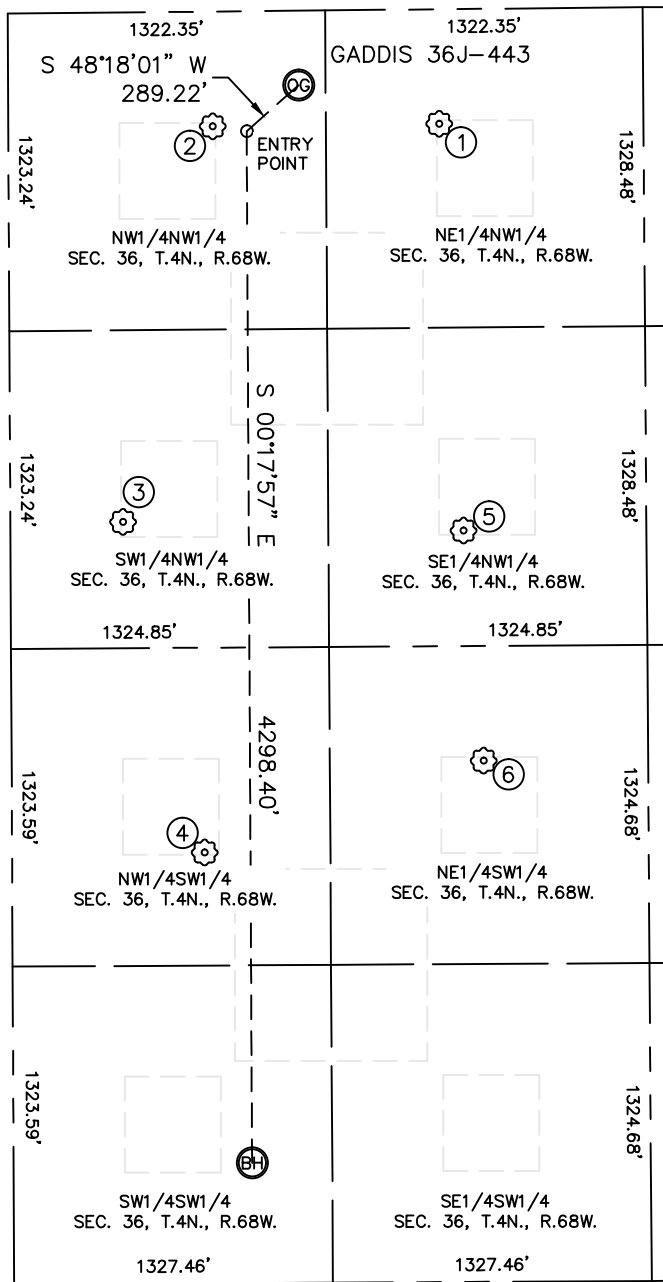




SITE SKETCH

GADDIS 36J-443

SECTION: 36
TOWNSHIP: 4N
RANGE: 68W



①

GADDIS 21-36
NE1/4NW1/4
477' FNL
1795' FWL
LAT-40.27609°N
LONG-104.95429°W
PDOP: 1.2
ELEV: 5045'

②

GADDIS 11-36
NW1/4NW1/4
478' FNL
851' FWL
LAT-40.27608°N
LONG-104.95767°W
PDOP: 1.5
ELEV: 5057'

③

GADDIS 12-36
SW1/4NW1/4
2122' FNL
469' FWL
LAT-40.27156°N
LONG-104.95904°W
PDOP: 2.6
ELEV: 5056'

④

STATE CORSAIR 13-36
NW1/4SW1/4
1794' FSL
802' FWL
LAT-40.26777°N
LONG-104.95785°W
PDOP: 2.7
ELEV: 5030'

⑤

GADDIS 22-36
SE1/4NW1/4
2173' FNL
1887' FWL
LAT-40.27144°N
LONG-104.95396°W
PDOP: 2.1
ELEV: 5022'

⑥

STATE CORSAIR 23-36
NE1/4SW1/4
2170' FSL
1965' FWL
LAT-40.26880°N
LONG-104.95368°W
PDOP: 1.2
ELEV: 5010'

