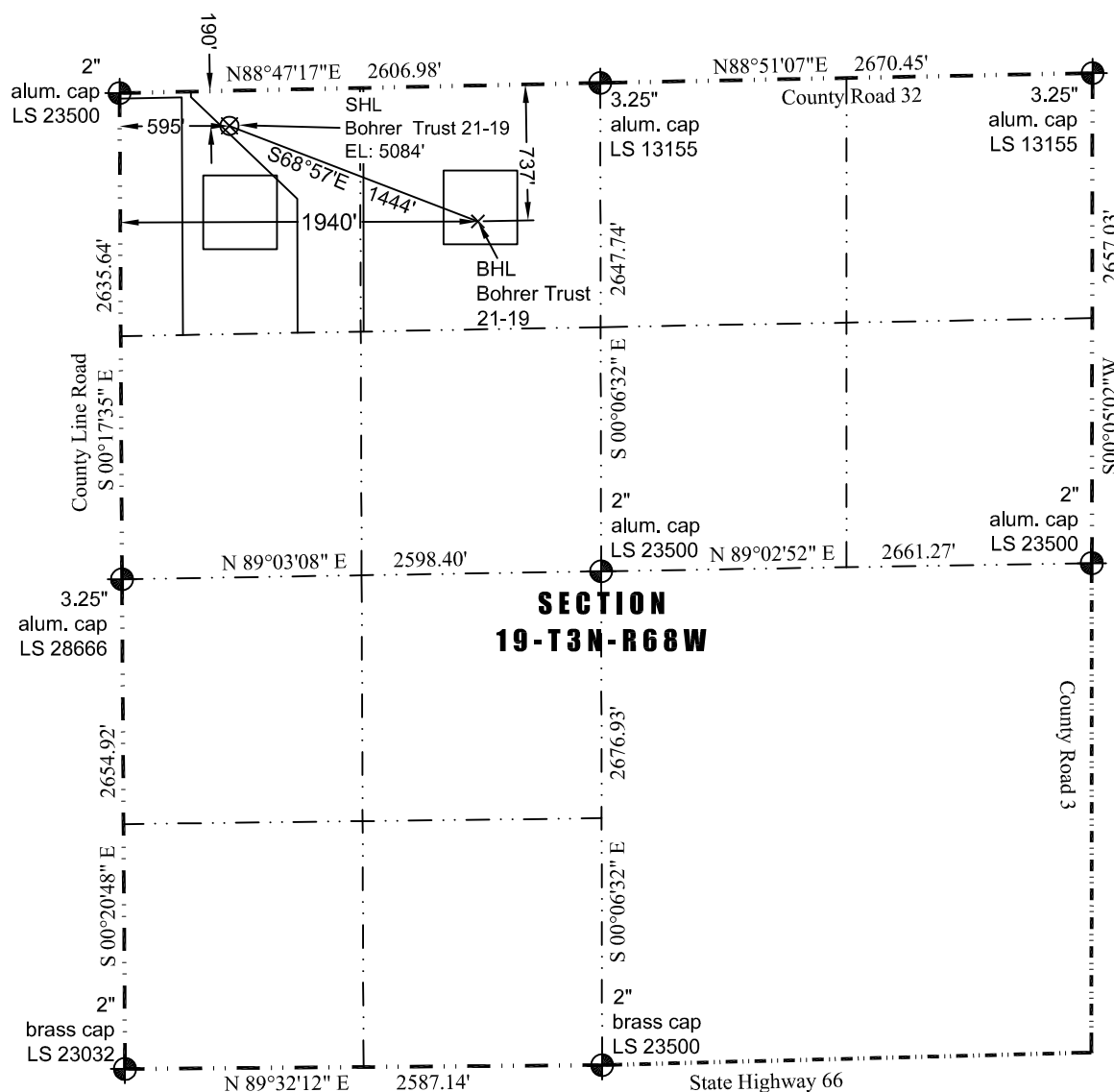



8114 Northstar Drive  
Windsor, Colorado 80528  
P. 970-576-4641

THIS MAP DOES NOT REPRESENT A BOUNDARY SURVEY




Scale 1" = 1000'



approximate scale

1000

**LEGEND**  
 – found survey monument  
(c) – calculated dimension

Surface Hole Data:

Latitude: N 40.21769° (BHL: 40.21625°)  
Longitude: W 105.05305° (BHL: 105.04823°)  
PDOP: 1.7

Building: 263' northwest      Above Ground Utility: 567' southwest  
Public Road: 580' west      Railroad: 11,176' west  
Property Line: 10' southwest      Well Window: SHL is 268' outside  
Existing Well: Ducci 1A-18H, 5174' northeast

- 1) Bearings and distances based on NAD 83 Colorado North State Plane Coordinates using RTK GPS observations taken 5/2/12 by operator John Rice.
- 2) Conversion factor to ground (1.0002868332).
- 3) Elevations based on NAVD 88 GPS heights and Geoid 2003 corrections.
- 4) The surface use is a cultivated field.

I hereby certify that this Well Location Certificate was prepared by me or under my direct supervision on 11/28/2012 for and on behalf of EnCana Oil & Gas (USA) Inc. That it is ~~not a Land Survey Plat or an Improvement Survey Plat~~ and that it is ~~not to be relied upon for establishment of fences, buildings, or other future improvement lines.~~

**NOTICE:** According to Colorado law you must commence any legal action based upon any defect in this W.L.C. within three years after you first discover such defect. In no event may any action based upon any defect in this W.L.C. be commenced more than ten years from this said date of the certification shown hereon.

John Robert McGehee LS#38219  
Well: Bohrer Trust 21-19 WLC