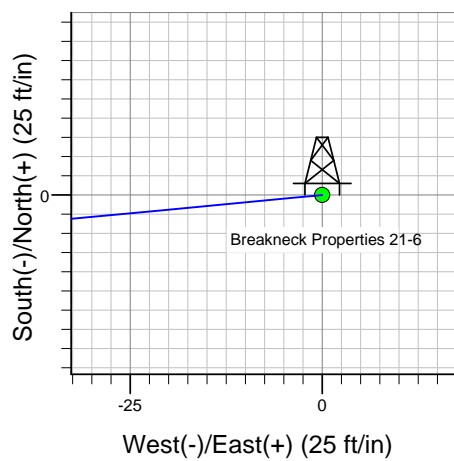
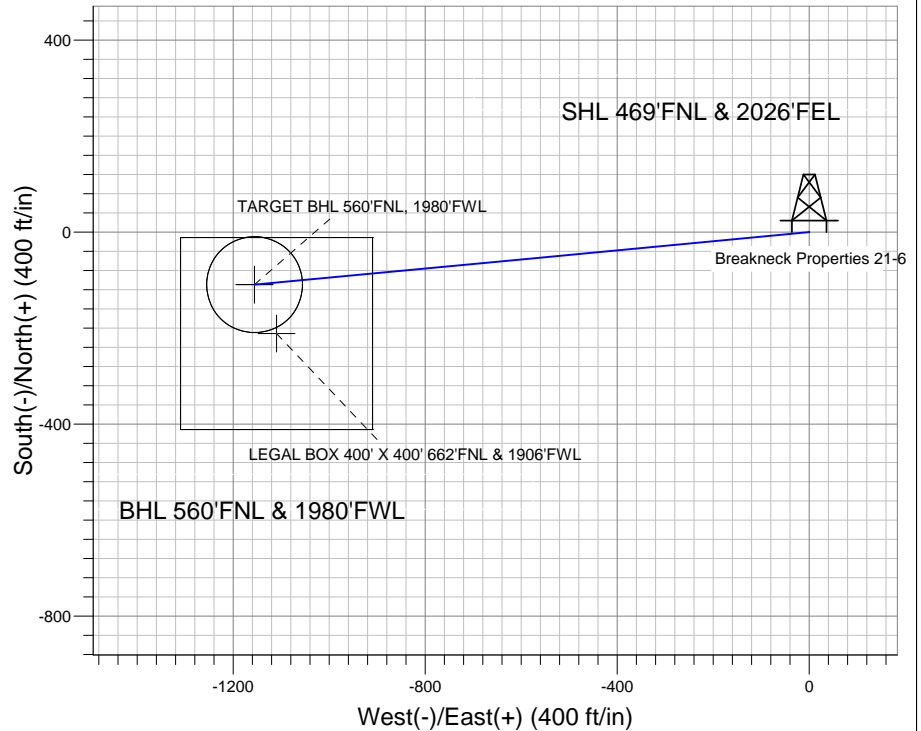
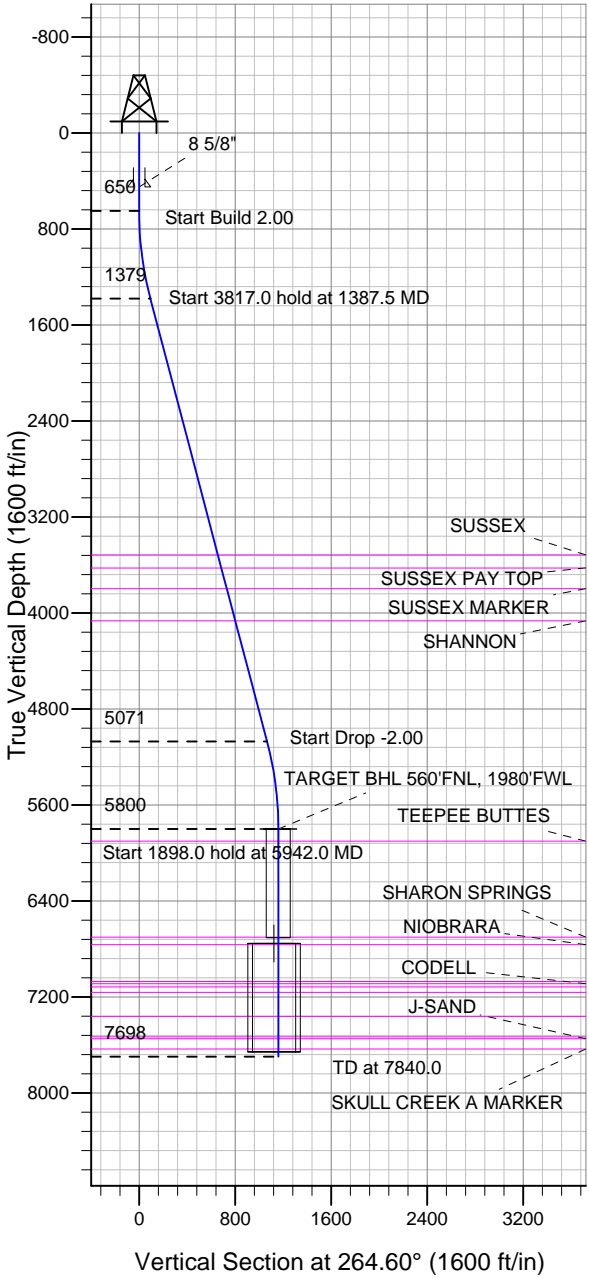


Well Name: Breakneck Properties 21-6

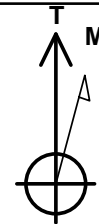
Surface Location: Breakneck Properties 21-6 Pad Sec.6-T3N-R68W
 North American Datum 1983 US State Plane 1983 Colorado Northern Zone

Ground Elevation: 5082.0
 +N/-S +E/-W Northing Easting Latitude Longitude Slot
 0.0 0.0 1338138.33 3127300.21 40.260690 -105.043860
 Original Well Elev WELL @ 5095.0ft (Original Well Elev)

EnCana Oil & Gas Weld County CO



Breakneck Properties 21-6 Pad Sec.6-T3N-R68W
 Breakneck Properties 21-6
 Plan #1 (1-08-13)



Azimuths to True North
 Magnetic North: 8.79°

Magnetic Field
 Strength: 52860.9nT
 Dip Angle: 66.84°
 Date: 1/8/2013
 Model: IGRF2010

WELLBORE TARGET DETAILS (LAT/LONG)

Name	TVD	+N/-S	+E/-W	Latitude	Longitude	Shape
TARGET BHL 560'FNL, 1980'FWL	5800.0	-109.3	-1155.5	40.260390	-105.048000	Point
TARGET CIRCLE 560'FNL & 1980'FWL	5800.0	-109.3	-1155.5	40.260390	-105.048000	Circle (Radius: 100.0)
LEGAL BOX 400' X 400' 662'FNL & 1906'FWL	6753.0	-211.3	-1109.5	40.260110	-105.047835	Rectangle (Sides: L400.0 W400.0)

SECTION DETAILS

Sec	MD	Inc	Azi	TVD	+N/-S	+E/-W	DLeg	TFace	VSec	Target
1	0.0	0.00	0.00	0.0	0.0	0.0	0.00	0.00	0.0	
2	650.0	0.00	0.00	650.0	0.0	0.0	0.00	0.00	0.0	
3	1387.5	14.75	264.60	1379.4	-8.9	-94.0	2.00	264.60	94.4	
4	5204.5	14.75	264.60	5070.6	-100.4	-1061.5	0.00	0.00	1066.2	
5	5942.0	0.00	0.00	5800.0	-109.3	-1155.5	2.00	180.00	1160.6	TARGET BHL 560'FNL, 1980'FWL
6	7840.0	0.00	0.00	7698.0	-109.3	-1155.5	0.00	0.00	1160.6	



Directional

EnCana Oil & Gas Weld County CO

SEC.6-T3N-R68W

Breakneck Properties 21-6 Pad Sec.6-T3N-R68W

Breakneck Properties 21-6

Wellbore #1

Plan: Plan #1 (1-08-13)

Standard Planning Report

08 January, 2013

Database:	Landmark	Local Co-ordinate Reference:	Well Breakneck Properties 21-6
Company:	EnCana Oil & Gas Weld County CO	TVD Reference:	WELL @ 5095.0ft (Original Well Elev)
Project:	SEC.6-T3N-R68W	MD Reference:	WELL @ 5095.0ft (Original Well Elev)
Site:	Breakneck Properties 21-6 Pad Sec.6-T3N-R68W	North Reference:	True
Well:	Breakneck Properties 21-6	Survey Calculation Method:	Minimum Curvature
Wellbore:	Wellbore #1		
Design:	Plan #1 (1-08-13)		

Project	SEC.6-T3N-R68W, Weld County, Colorado		
Map System:	US State Plane 1983	System Datum:	Mean Sea Level
Geo Datum:	North American Datum 1983		Using Well Reference Point
Map Zone:	Colorado Northern Zone		Using geodetic scale factor

Site	Breakneck Properties 21-6 Pad Sec.6-T3N-R68W				
Site Position:		Northing:	1,338,138.33 ft	Latitude:	40.260690
From:	Lat/Long	Easting:	3,127,300.21 ft	Longitude:	-105.043860
Position Uncertainty:	0.0 ft	Slot Radius:	"	Grid Convergence:	0.29 °

Well	Breakneck Properties 21-6					
Well Position	+N/-S	0.0 ft	Northing:	1,338,138.33 ft	Latitude:	40.260690
	+E/-W	0.0 ft	Easting:	3,127,300.21 ft	Longitude:	-105.043860
Position Uncertainty		0.0 ft	Wellhead Elevation:	ft	Ground Level:	5,082.0 ft

Wellbore	Wellbore #1				
Magnetics	Model Name	Sample Date	Declination (°)	Dip Angle (°)	Field Strength (nT)
	IGRF2010	1/8/2013	8.79	66.84	52,861

Design	Plan #1 (1-08-13)			
Audit Notes:				
Version:	Phase:	PROTOTYPE	Tie On Depth:	0.0
Vertical Section:	Depth From (TVD) (ft)	+N/-S (ft)	+E/-W (ft)	Direction (°)
	0.0	0.0	0.0	264.60

Plan Sections										
Measured Depth (ft)	Inclination (°)	Azimuth (°)	Vertical Depth (ft)	+N/-S (ft)	+E/-W (ft)	Dogleg Rate (°/100ft)	Build Rate (°/100ft)	Turn Rate (°/100ft)	TFO (°)	Target
0.0	0.00	0.00	0.0	0.0	0.0	0.00	0.00	0.00	0.00	
650.0	0.00	0.00	650.0	0.0	0.0	0.00	0.00	0.00	0.00	
1,387.5	14.75	264.60	1,379.4	-8.9	-94.0	2.00	2.00	0.00	264.60	
5,204.5	14.75	264.60	5,070.6	-100.4	-1,061.5	0.00	0.00	0.00	0.00	
5,942.0	0.00	0.00	5,800.0	-109.3	-1,155.5	2.00	-2.00	0.00	180.00	TARGET BHL 560'I
7,840.0	0.00	0.00	7,698.0	-109.3	-1,155.5	0.00	0.00	0.00	0.00	

Database:	Landmark	Local Co-ordinate Reference:	Well Breakneck Properties 21-6
Company:	EnCana Oil & Gas Weld County CO	TVD Reference:	WELL @ 5095.0ft (Original Well Elev)
Project:	SEC.6-T3N-R68W	MD Reference:	WELL @ 5095.0ft (Original Well Elev)
Site:	Breakneck Properties 21-6 Pad Sec.6-T3N-R68W	North Reference:	True
Well:	Breakneck Properties 21-6	Survey Calculation Method:	Minimum Curvature
Wellbore:	Wellbore #1		
Design:	Plan #1 (1-08-13)		

Planned Survey

Measured Depth (ft)	Inclination (°)	Azimuth (°)	Vertical Depth (ft)	+N-/S (ft)	+E-/W (ft)	Vertical Section (ft)	Dogleg Rate (°/100ft)	Build Rate (°/100ft)	Turn Rate (°/100ft)
0.0	0.00	0.00	0.0	0.0	0.0	0.0	0.00	0.00	0.00
40.0	0.00	0.00	40.0	0.0	0.0	0.0	0.00	0.00	0.00
80.0	0.00	0.00	80.0	0.0	0.0	0.0	0.00	0.00	0.00
120.0	0.00	0.00	120.0	0.0	0.0	0.0	0.00	0.00	0.00
160.0	0.00	0.00	160.0	0.0	0.0	0.0	0.00	0.00	0.00
200.0	0.00	0.00	200.0	0.0	0.0	0.0	0.00	0.00	0.00
240.0	0.00	0.00	240.0	0.0	0.0	0.0	0.00	0.00	0.00
280.0	0.00	0.00	280.0	0.0	0.0	0.0	0.00	0.00	0.00
320.0	0.00	0.00	320.0	0.0	0.0	0.0	0.00	0.00	0.00
360.0	0.00	0.00	360.0	0.0	0.0	0.0	0.00	0.00	0.00
400.0	0.00	0.00	400.0	0.0	0.0	0.0	0.00	0.00	0.00
440.0	0.00	0.00	440.0	0.0	0.0	0.0	0.00	0.00	0.00
450.0	0.00	0.00	450.0	0.0	0.0	0.0	0.00	0.00	0.00
8 5/8"									
480.0	0.00	0.00	480.0	0.0	0.0	0.0	0.00	0.00	0.00
520.0	0.00	0.00	520.0	0.0	0.0	0.0	0.00	0.00	0.00
560.0	0.00	0.00	560.0	0.0	0.0	0.0	0.00	0.00	0.00
600.0	0.00	0.00	600.0	0.0	0.0	0.0	0.00	0.00	0.00
640.0	0.00	0.00	640.0	0.0	0.0	0.0	0.00	0.00	0.00
650.0	0.00	0.00	650.0	0.0	0.0	0.0	0.00	0.00	0.00
680.0	0.60	264.60	680.0	0.0	-0.2	0.2	2.00	2.00	0.00
720.0	1.40	264.60	720.0	-0.1	-0.9	0.9	2.00	2.00	0.00
760.0	2.20	264.60	760.0	-0.2	-2.1	2.1	2.00	2.00	0.00
800.0	3.00	264.60	799.9	-0.4	-3.9	3.9	2.00	2.00	0.00
840.0	3.80	264.60	839.9	-0.6	-6.3	6.3	2.00	2.00	0.00
880.0	4.60	264.60	879.8	-0.9	-9.2	9.2	2.00	2.00	0.00
920.0	5.40	264.60	919.6	-1.2	-12.7	12.7	2.00	2.00	0.00
960.0	6.20	264.60	959.4	-1.6	-16.7	16.8	2.00	2.00	0.00
1,000.0	7.00	264.60	999.1	-2.0	-21.3	21.4	2.00	2.00	0.00
1,040.0	7.80	264.60	1,038.8	-2.5	-26.4	26.5	2.00	2.00	0.00
1,080.0	8.60	264.60	1,078.4	-3.0	-32.1	32.2	2.00	2.00	0.00
1,120.0	9.40	264.60	1,117.9	-3.6	-38.3	38.5	2.00	2.00	0.00
1,160.0	10.20	264.60	1,157.3	-4.3	-45.1	45.3	2.00	2.00	0.00
1,200.0	11.00	264.60	1,196.6	-5.0	-52.4	52.6	2.00	2.00	0.00
1,240.0	11.80	264.60	1,235.8	-5.7	-60.3	60.5	2.00	2.00	0.00
1,280.0	12.60	264.60	1,274.9	-6.5	-68.7	69.0	2.00	2.00	0.00
1,320.0	13.40	264.60	1,313.9	-7.3	-77.6	78.0	2.00	2.00	0.00
1,360.0	14.20	264.60	1,352.8	-8.2	-87.1	87.5	2.00	2.00	0.00
1,387.5	14.75	264.60	1,379.4	-8.9	-94.0	94.4	2.00	2.00	0.00
1,400.0	14.75	264.60	1,391.5	-9.2	-97.2	97.6	0.00	0.00	0.00
1,440.0	14.75	264.60	1,430.2	-10.1	-107.3	107.8	0.00	0.00	0.00
1,480.0	14.75	264.60	1,468.8	-11.1	-117.4	118.0	0.00	0.00	0.00
1,520.0	14.75	264.60	1,507.5	-12.1	-127.6	128.1	0.00	0.00	0.00
1,560.0	14.75	264.60	1,546.2	-13.0	-137.7	138.3	0.00	0.00	0.00
1,600.0	14.75	264.60	1,584.9	-14.0	-147.8	148.5	0.00	0.00	0.00
1,640.0	14.75	264.60	1,623.6	-14.9	-158.0	158.7	0.00	0.00	0.00
1,680.0	14.75	264.60	1,662.2	-15.9	-168.1	168.9	0.00	0.00	0.00
1,720.0	14.75	264.60	1,700.9	-16.9	-178.3	179.1	0.00	0.00	0.00
1,760.0	14.75	264.60	1,739.6	-17.8	-188.4	189.2	0.00	0.00	0.00
1,800.0	14.75	264.60	1,778.3	-18.8	-198.5	199.4	0.00	0.00	0.00
1,840.0	14.75	264.60	1,817.0	-19.7	-208.7	209.6	0.00	0.00	0.00
1,880.0	14.75	264.60	1,855.7	-20.7	-218.8	219.8	0.00	0.00	0.00
1,920.0	14.75	264.60	1,894.3	-21.7	-229.0	230.0	0.00	0.00	0.00

Database:	Landmark	Local Co-ordinate Reference:	Well Breakneck Properties 21-6
Company:	EnCana Oil & Gas Weld County CO	TVD Reference:	WELL @ 5095.0ft (Original Well Elev)
Project:	SEC.6-T3N-R68W	MD Reference:	WELL @ 5095.0ft (Original Well Elev)
Site:	Breakneck Properties 21-6 Pad Sec.6-T3N-R68W	North Reference:	True
Well:	Breakneck Properties 21-6	Survey Calculation Method:	Minimum Curvature
Wellbore:	Wellbore #1		
Design:	Plan #1 (1-08-13)		

Planned Survey

Measured Depth (ft)	Inclination (°)	Azimuth (°)	Vertical Depth (ft)	+N/-S (ft)	+E/-W (ft)	Vertical Section (ft)	Dogleg Rate (°/100ft)	Build Rate (°/100ft)	Turn Rate (°/100ft)
1,960.0	14.75	264.60	1,933.0	-22.6	-239.1	240.2	0.00	0.00	0.00
2,000.0	14.75	264.60	1,971.7	-23.6	-249.2	250.3	0.00	0.00	0.00
2,040.0	14.75	264.60	2,010.4	-24.5	-259.4	260.5	0.00	0.00	0.00
2,080.0	14.75	264.60	2,049.1	-25.5	-269.5	270.7	0.00	0.00	0.00
2,120.0	14.75	264.60	2,087.7	-26.4	-279.7	280.9	0.00	0.00	0.00
2,160.0	14.75	264.60	2,126.4	-27.4	-289.8	291.1	0.00	0.00	0.00
2,200.0	14.75	264.60	2,165.1	-28.4	-299.9	301.3	0.00	0.00	0.00
2,240.0	14.75	264.60	2,203.8	-29.3	-310.1	311.5	0.00	0.00	0.00
2,280.0	14.75	264.60	2,242.5	-30.3	-320.2	321.6	0.00	0.00	0.00
2,320.0	14.75	264.60	2,281.2	-31.2	-330.3	331.8	0.00	0.00	0.00
2,360.0	14.75	264.60	2,319.8	-32.2	-340.5	342.0	0.00	0.00	0.00
2,400.0	14.75	264.60	2,358.5	-33.2	-350.6	352.2	0.00	0.00	0.00
2,440.0	14.75	264.60	2,397.2	-34.1	-360.8	362.4	0.00	0.00	0.00
2,480.0	14.75	264.60	2,435.9	-35.1	-370.9	372.6	0.00	0.00	0.00
2,520.0	14.75	264.60	2,474.6	-36.0	-381.0	382.7	0.00	0.00	0.00
2,560.0	14.75	264.60	2,513.2	-37.0	-391.2	392.9	0.00	0.00	0.00
2,600.0	14.75	264.60	2,551.9	-37.9	-401.3	403.1	0.00	0.00	0.00
2,640.0	14.75	264.60	2,590.6	-38.9	-411.5	413.3	0.00	0.00	0.00
2,680.0	14.75	264.60	2,629.3	-39.9	-421.6	423.5	0.00	0.00	0.00
2,720.0	14.75	264.60	2,668.0	-40.8	-431.7	433.7	0.00	0.00	0.00
2,760.0	14.75	264.60	2,706.7	-41.8	-441.9	443.8	0.00	0.00	0.00
2,800.0	14.75	264.60	2,745.3	-42.7	-452.0	454.0	0.00	0.00	0.00
2,840.0	14.75	264.60	2,784.0	-43.7	-462.1	464.2	0.00	0.00	0.00
2,880.0	14.75	264.60	2,822.7	-44.7	-472.3	474.4	0.00	0.00	0.00
2,920.0	14.75	264.60	2,861.4	-45.6	-482.4	484.6	0.00	0.00	0.00
2,960.0	14.75	264.60	2,900.1	-46.6	-492.6	494.8	0.00	0.00	0.00
3,000.0	14.75	264.60	2,938.7	-47.5	-502.7	504.9	0.00	0.00	0.00
3,040.0	14.75	264.60	2,977.4	-48.5	-512.8	515.1	0.00	0.00	0.00
3,080.0	14.75	264.60	3,016.1	-49.5	-523.0	525.3	0.00	0.00	0.00
3,120.0	14.75	264.60	3,054.8	-50.4	-533.1	535.5	0.00	0.00	0.00
3,160.0	14.75	264.60	3,093.5	-51.4	-543.3	545.7	0.00	0.00	0.00
3,200.0	14.75	264.60	3,132.2	-52.3	-553.4	555.9	0.00	0.00	0.00
3,240.0	14.75	264.60	3,170.8	-53.3	-563.5	566.0	0.00	0.00	0.00
3,280.0	14.75	264.60	3,209.5	-54.2	-573.7	576.2	0.00	0.00	0.00
3,320.0	14.75	264.60	3,248.2	-55.2	-583.8	586.4	0.00	0.00	0.00
3,360.0	14.75	264.60	3,286.9	-56.2	-593.9	596.6	0.00	0.00	0.00
3,400.0	14.75	264.60	3,325.6	-57.1	-604.1	606.8	0.00	0.00	0.00
3,440.0	14.75	264.60	3,364.2	-58.1	-614.2	617.0	0.00	0.00	0.00
3,480.0	14.75	264.60	3,402.9	-59.0	-624.4	627.2	0.00	0.00	0.00
3,520.0	14.75	264.60	3,441.6	-60.0	-634.5	637.3	0.00	0.00	0.00
3,560.0	14.75	264.60	3,480.3	-61.0	-644.6	647.5	0.00	0.00	0.00
3,595.9	14.75	264.60	3,515.0	-61.8	-653.7	656.7	0.00	0.00	0.00
SUSSEX									
3,600.0	14.75	264.60	3,519.0	-61.9	-654.8	657.7	0.00	0.00	0.00
3,640.0	14.75	264.60	3,557.7	-62.9	-664.9	667.9	0.00	0.00	0.00
3,680.0	14.75	264.60	3,596.3	-63.8	-675.1	678.1	0.00	0.00	0.00
3,709.6	14.75	264.60	3,625.0	-64.5	-682.6	685.6	0.00	0.00	0.00
SUSSEX PAY TOP									
3,720.0	14.75	264.60	3,635.0	-64.8	-685.2	688.3	0.00	0.00	0.00
3,760.0	14.75	264.60	3,673.7	-65.8	-695.3	698.4	0.00	0.00	0.00
3,800.0	14.75	264.60	3,712.4	-66.7	-705.5	708.6	0.00	0.00	0.00
3,840.0	14.75	264.60	3,751.1	-67.7	-715.6	718.8	0.00	0.00	0.00
3,880.0	14.75	264.60	3,789.7	-68.6	-725.8	729.0	0.00	0.00	0.00

Database:	Landmark	Local Co-ordinate Reference:	Well Breakneck Properties 21-6
Company:	EnCana Oil & Gas Weld County CO	TVD Reference:	WELL @ 5095.0ft (Original Well Elev)
Project:	SEC.6-T3N-R68W	MD Reference:	WELL @ 5095.0ft (Original Well Elev)
Site:	Breakneck Properties 21-6 Pad Sec.6-T3N-R68W	North Reference:	True
Well:	Breakneck Properties 21-6	Survey Calculation Method:	Minimum Curvature
Wellbore:	Wellbore #1		
Design:	Plan #1 (1-08-13)		

Planned Survey

Measured Depth (ft)	Inclination (°)	Azimuth (°)	Vertical Depth (ft)	+N/-S (ft)	+E/-W (ft)	Vertical Section (ft)	Dogleg Rate (°/100ft)	Build Rate (°/100ft)	Turn Rate (°/100ft)
3,887.5	14.75	264.60	3,797.0	-68.8	-727.7	730.9	0.00	0.00	0.00
SUSSEX MARKER									
3,920.0	14.75	264.60	3,828.4	-69.6	-735.9	739.2	0.00	0.00	0.00
3,960.0	14.75	264.60	3,867.1	-70.5	-746.0	749.4	0.00	0.00	0.00
4,000.0	14.75	264.60	3,905.8	-71.5	-756.2	759.5	0.00	0.00	0.00
4,040.0	14.75	264.60	3,944.5	-72.5	-766.3	769.7	0.00	0.00	0.00
4,080.0	14.75	264.60	3,983.2	-73.4	-776.4	779.9	0.00	0.00	0.00
4,120.0	14.75	264.60	4,021.8	-74.4	-786.6	790.1	0.00	0.00	0.00
4,160.0	14.75	264.60	4,060.5	-75.3	-796.7	800.3	0.00	0.00	0.00
4,164.6	14.75	264.60	4,065.0	-75.4	-797.9	801.5	0.00	0.00	0.00
SHANNON									
4,200.0	14.75	264.60	4,099.2	-76.3	-806.9	810.5	0.00	0.00	0.00
4,240.0	14.75	264.60	4,137.9	-77.3	-817.0	820.6	0.00	0.00	0.00
4,280.0	14.75	264.60	4,176.6	-78.2	-827.1	830.8	0.00	0.00	0.00
4,320.0	14.75	264.60	4,215.2	-79.2	-837.3	841.0	0.00	0.00	0.00
4,360.0	14.75	264.60	4,253.9	-80.1	-847.4	851.2	0.00	0.00	0.00
4,400.0	14.75	264.60	4,292.6	-81.1	-857.6	861.4	0.00	0.00	0.00
4,440.0	14.75	264.60	4,331.3	-82.0	-867.7	871.6	0.00	0.00	0.00
4,480.0	14.75	264.60	4,370.0	-83.0	-877.8	881.7	0.00	0.00	0.00
4,520.0	14.75	264.60	4,408.7	-84.0	-888.0	891.9	0.00	0.00	0.00
4,560.0	14.75	264.60	4,447.3	-84.9	-898.1	902.1	0.00	0.00	0.00
4,600.0	14.75	264.60	4,486.0	-85.9	-908.2	912.3	0.00	0.00	0.00
4,640.0	14.75	264.60	4,524.7	-86.8	-918.4	922.5	0.00	0.00	0.00
4,680.0	14.75	264.60	4,563.4	-87.8	-928.5	932.7	0.00	0.00	0.00
4,720.0	14.75	264.60	4,602.1	-88.8	-938.7	942.9	0.00	0.00	0.00
4,760.0	14.75	264.60	4,640.7	-89.7	-948.8	953.0	0.00	0.00	0.00
4,800.0	14.75	264.60	4,679.4	-90.7	-958.9	963.2	0.00	0.00	0.00
4,840.0	14.75	264.60	4,718.1	-91.6	-969.1	973.4	0.00	0.00	0.00
4,880.0	14.75	264.60	4,756.8	-92.6	-979.2	983.6	0.00	0.00	0.00
4,920.0	14.75	264.60	4,795.5	-93.6	-989.4	993.8	0.00	0.00	0.00
4,960.0	14.75	264.60	4,834.2	-94.5	-999.5	1,004.0	0.00	0.00	0.00
5,000.0	14.75	264.60	4,872.8	-95.5	-1,009.6	1,014.1	0.00	0.00	0.00
5,040.0	14.75	264.60	4,911.5	-96.4	-1,019.8	1,024.3	0.00	0.00	0.00
5,080.0	14.75	264.60	4,950.2	-97.4	-1,029.9	1,034.5	0.00	0.00	0.00
5,120.0	14.75	264.60	4,988.9	-98.3	-1,040.0	1,044.7	0.00	0.00	0.00
5,160.0	14.75	264.60	5,027.6	-99.3	-1,050.2	1,054.9	0.00	0.00	0.00
5,200.0	14.75	264.60	5,066.2	-100.3	-1,060.3	1,065.1	0.00	0.00	0.00
5,204.5	14.75	264.60	5,070.6	-100.4	-1,061.5	1,066.2	0.00	0.00	0.00
5,240.0	14.04	264.60	5,105.0	-101.2	-1,070.3	1,075.0	2.00	-2.00	0.00
5,280.0	13.24	264.60	5,143.9	-102.1	-1,079.6	1,084.5	2.00	-2.00	0.00
5,320.0	12.44	264.60	5,182.9	-102.9	-1,088.5	1,093.4	2.00	-2.00	0.00
5,360.0	11.64	264.60	5,222.0	-103.7	-1,096.8	1,101.7	2.00	-2.00	0.00
5,400.0	10.84	264.60	5,261.2	-104.4	-1,104.6	1,109.5	2.00	-2.00	0.00
5,440.0	10.04	264.60	5,300.5	-105.1	-1,111.8	1,116.7	2.00	-2.00	0.00
5,480.0	9.24	264.60	5,340.0	-105.8	-1,118.4	1,123.4	2.00	-2.00	0.00
5,520.0	8.44	264.60	5,379.5	-106.3	-1,124.6	1,129.6	2.00	-2.00	0.00
5,560.0	7.64	264.60	5,419.1	-106.9	-1,130.1	1,135.2	2.00	-2.00	0.00
5,600.0	6.84	264.60	5,458.8	-107.3	-1,135.2	1,140.2	2.00	-2.00	0.00
5,640.0	6.04	264.60	5,498.5	-107.8	-1,139.6	1,144.7	2.00	-2.00	0.00
5,680.0	5.24	264.60	5,538.3	-108.1	-1,143.5	1,148.6	2.00	-2.00	0.00
5,720.0	4.44	264.60	5,578.2	-108.5	-1,146.9	1,152.0	2.00	-2.00	0.00
5,760.0	3.64	264.60	5,618.1	-108.7	-1,149.7	1,154.8	2.00	-2.00	0.00
5,800.0	2.84	264.60	5,658.0	-108.9	-1,152.0	1,157.1	2.00	-2.00	0.00

Database:	Landmark	Local Co-ordinate Reference:	Well Breakneck Properties 21-6
Company:	EnCana Oil & Gas Weld County CO	TVD Reference:	WELL @ 5095.0ft (Original Well Elev)
Project:	SEC.6-T3N-R68W	MD Reference:	WELL @ 5095.0ft (Original Well Elev)
Site:	Breakneck Properties 21-6 Pad Sec.6-T3N-R68W	North Reference:	True
Well:	Breakneck Properties 21-6	Survey Calculation Method:	Minimum Curvature
Wellbore:	Wellbore #1		
Design:	Plan #1 (1-08-13)		

Planned Survey

Measured Depth (ft)	Inclination (°)	Azimuth (°)	Vertical Depth (ft)	+N/-S (ft)	+E/-W (ft)	Vertical Section (ft)	Dogleg Rate (°/100ft)	Build Rate (°/100ft)	Turn Rate (°/100ft)
5,840.0	2.04	264.60	5,698.0	-109.1	-1,153.7	1,158.8	2.00	-2.00	0.00
5,880.0	1.24	264.60	5,738.0	-109.2	-1,154.8	1,159.9	2.00	-2.00	0.00
5,920.0	0.44	264.60	5,778.0	-109.3	-1,155.4	1,160.5	2.00	-2.00	0.00
5,942.0	0.00	0.00	5,800.0	-109.3	-1,155.5	1,160.6	2.00	-2.00	0.00
5,960.0	0.00	0.00	5,818.0	-109.3	-1,155.5	1,160.6	0.00	0.00	0.00
6,000.0	0.00	0.00	5,858.0	-109.3	-1,155.5	1,160.6	0.00	0.00	0.00
6,040.0	0.00	0.00	5,898.0	-109.3	-1,155.5	1,160.6	0.00	0.00	0.00
6,043.0	0.00	0.00	5,901.0	-109.3	-1,155.5	1,160.6	0.00	0.00	0.00
TEEPEE BUTTES									
6,080.0	0.00	0.00	5,938.0	-109.3	-1,155.5	1,160.6	0.00	0.00	0.00
6,120.0	0.00	0.00	5,978.0	-109.3	-1,155.5	1,160.6	0.00	0.00	0.00
6,160.0	0.00	0.00	6,018.0	-109.3	-1,155.5	1,160.6	0.00	0.00	0.00
6,200.0	0.00	0.00	6,058.0	-109.3	-1,155.5	1,160.6	0.00	0.00	0.00
6,240.0	0.00	0.00	6,098.0	-109.3	-1,155.5	1,160.6	0.00	0.00	0.00
6,280.0	0.00	0.00	6,138.0	-109.3	-1,155.5	1,160.6	0.00	0.00	0.00
6,320.0	0.00	0.00	6,178.0	-109.3	-1,155.5	1,160.6	0.00	0.00	0.00
6,360.0	0.00	0.00	6,218.0	-109.3	-1,155.5	1,160.6	0.00	0.00	0.00
6,400.0	0.00	0.00	6,258.0	-109.3	-1,155.5	1,160.6	0.00	0.00	0.00
6,440.0	0.00	0.00	6,298.0	-109.3	-1,155.5	1,160.6	0.00	0.00	0.00
6,480.0	0.00	0.00	6,338.0	-109.3	-1,155.5	1,160.6	0.00	0.00	0.00
6,520.0	0.00	0.00	6,378.0	-109.3	-1,155.5	1,160.6	0.00	0.00	0.00
6,560.0	0.00	0.00	6,418.0	-109.3	-1,155.5	1,160.6	0.00	0.00	0.00
6,600.0	0.00	0.00	6,458.0	-109.3	-1,155.5	1,160.6	0.00	0.00	0.00
6,640.0	0.00	0.00	6,498.0	-109.3	-1,155.5	1,160.6	0.00	0.00	0.00
6,680.0	0.00	0.00	6,538.0	-109.3	-1,155.5	1,160.6	0.00	0.00	0.00
6,720.0	0.00	0.00	6,578.0	-109.3	-1,155.5	1,160.6	0.00	0.00	0.00
6,760.0	0.00	0.00	6,618.0	-109.3	-1,155.5	1,160.6	0.00	0.00	0.00
6,800.0	0.00	0.00	6,658.0	-109.3	-1,155.5	1,160.6	0.00	0.00	0.00
6,840.0	0.00	0.00	6,698.0	-109.3	-1,155.5	1,160.6	0.00	0.00	0.00
6,843.0	0.00	0.00	6,701.0	-109.3	-1,155.5	1,160.6	0.00	0.00	0.00
SHARON SPRINGS									
6,880.0	0.00	0.00	6,738.0	-109.3	-1,155.5	1,160.6	0.00	0.00	0.00
6,905.0	0.00	0.00	6,763.0	-109.3	-1,155.5	1,160.6	0.00	0.00	0.00
NIOBARRA									
6,920.0	0.00	0.00	6,778.0	-109.3	-1,155.5	1,160.6	0.00	0.00	0.00
6,960.0	0.00	0.00	6,818.0	-109.3	-1,155.5	1,160.6	0.00	0.00	0.00
7,000.0	0.00	0.00	6,858.0	-109.3	-1,155.5	1,160.6	0.00	0.00	0.00
7,040.0	0.00	0.00	6,898.0	-109.3	-1,155.5	1,160.6	0.00	0.00	0.00
7,080.0	0.00	0.00	6,938.0	-109.3	-1,155.5	1,160.6	0.00	0.00	0.00
7,120.0	0.00	0.00	6,978.0	-109.3	-1,155.5	1,160.6	0.00	0.00	0.00
7,160.0	0.00	0.00	7,018.0	-109.3	-1,155.5	1,160.6	0.00	0.00	0.00
7,200.0	0.00	0.00	7,058.0	-109.3	-1,155.5	1,160.6	0.00	0.00	0.00
7,212.0	0.00	0.00	7,070.0	-109.3	-1,155.5	1,160.6	0.00	0.00	0.00
FT. HAYES									
7,232.0	0.00	0.00	7,090.0	-109.3	-1,155.5	1,160.6	0.00	0.00	0.00
CODELL									
7,240.0	0.00	0.00	7,098.0	-109.3	-1,155.5	1,160.6	0.00	0.00	0.00
7,257.0	0.00	0.00	7,115.0	-109.3	-1,155.5	1,160.6	0.00	0.00	0.00
FAIRPORT									
7,280.0	0.00	0.00	7,138.0	-109.3	-1,155.5	1,160.6	0.00	0.00	0.00
7,304.0	0.00	0.00	7,162.0	-109.3	-1,155.5	1,160.6	0.00	0.00	0.00
GREENHORN									

Database:	Landmark	Local Co-ordinate Reference:	Well Breakneck Properties 21-6
Company:	EnCana Oil & Gas Weld County CO	TVD Reference:	WELL @ 5095.0ft (Original Well Elev)
Project:	SEC.6-T3N-R68W	MD Reference:	WELL @ 5095.0ft (Original Well Elev)
Site:	Breakneck Properties 21-6 Pad Sec.6-T3N-R68W	North Reference:	True
Well:	Breakneck Properties 21-6	Survey Calculation Method:	Minimum Curvature
Wellbore:	Wellbore #1		
Design:	Plan #1 (1-08-13)		

Planned Survey

Measured Depth (ft)	Inclination (°)	Azimuth (°)	Vertical Depth (ft)	+N/-S (ft)	+E/-W (ft)	Vertical Section (ft)	Dogleg Rate (°/100ft)	Build Rate (°/100ft)	Turn Rate (°/100ft)
7,320.0	0.00	0.00	7,178.0	-109.3	-1,155.5	1,160.6	0.00	0.00	0.00
7,360.0	0.00	0.00	7,218.0	-109.3	-1,155.5	1,160.6	0.00	0.00	0.00
7,400.0	0.00	0.00	7,258.0	-109.3	-1,155.5	1,160.6	0.00	0.00	0.00
7,440.0	0.00	0.00	7,298.0	-109.3	-1,155.5	1,160.6	0.00	0.00	0.00
7,480.0	0.00	0.00	7,338.0	-109.3	-1,155.5	1,160.6	0.00	0.00	0.00
7,504.0	0.00	0.00	7,362.0	-109.3	-1,155.5	1,160.6	0.00	0.00	0.00
GRANEROS									
7,520.0	0.00	0.00	7,378.0	-109.3	-1,155.5	1,160.6	0.00	0.00	0.00
7,560.0	0.00	0.00	7,418.0	-109.3	-1,155.5	1,160.6	0.00	0.00	0.00
7,600.0	0.00	0.00	7,458.0	-109.3	-1,155.5	1,160.6	0.00	0.00	0.00
7,640.0	0.00	0.00	7,498.0	-109.3	-1,155.5	1,160.6	0.00	0.00	0.00
7,674.0	0.00	0.00	7,532.0	-109.3	-1,155.5	1,160.6	0.00	0.00	0.00
MOWRY									
7,680.0	0.00	0.00	7,538.0	-109.3	-1,155.5	1,160.6	0.00	0.00	0.00
7,690.0	0.00	0.00	7,548.0	-109.3	-1,155.5	1,160.6	0.00	0.00	0.00
J-SAND									
7,720.0	0.00	0.00	7,578.0	-109.3	-1,155.5	1,160.6	0.00	0.00	0.00
7,760.0	0.00	0.00	7,618.0	-109.3	-1,155.5	1,160.6	0.00	0.00	0.00
7,775.0	0.00	0.00	7,633.0	-109.3	-1,155.5	1,160.6	0.00	0.00	0.00
SKULL CREEK A MARKER									
7,800.0	0.00	0.00	7,658.0	-109.3	-1,155.5	1,160.6	0.00	0.00	0.00
7,840.0	0.00	0.00	7,698.0	-109.3	-1,155.5	1,160.6	0.00	0.00	0.00

Casing Points

Measured Depth (ft)	Vertical Depth (ft)	Name	Casing Diameter (")	Hole Diameter (")
450.0	450.0	8 5/8"	8-5/8	12-1/4

Database:	Landmark	Local Co-ordinate Reference:	Well Breakneck Properties 21-6
Company:	EnCana Oil & Gas Weld County CO	TVD Reference:	WELL @ 5095.0ft (Original Well Elev)
Project:	SEC.6-T3N-R68W	MD Reference:	WELL @ 5095.0ft (Original Well Elev)
Site:	Breakneck Properties 21-6 Pad Sec.6-T3N-R68W	North Reference:	True
Well:	Breakneck Properties 21-6	Survey Calculation Method:	Minimum Curvature
Wellbore:	Wellbore #1		
Design:	Plan #1 (1-08-13)		

Formations

Measured Depth (ft)	Vertical Depth (ft)	Name	Lithology	Dip (°)	Dip Direction (°)
3,595.9	3,515.0	SUSSEX		0.00	
3,709.6	3,625.0	SUSSEX PAY TOP		0.00	
3,887.5	3,797.0	SUSSEX MARKER		0.00	
4,164.6	4,065.0	SHANNON		0.00	
6,043.0	5,901.0	TEEPEE BUTTES		0.00	
6,843.0	6,701.0	SHARON SPRINGS		0.00	
6,905.0	6,763.0	NIOBRARA		0.00	
7,212.0	7,070.0	FT. HAYES		0.00	
7,232.0	7,090.0	CODELL		0.00	
7,257.0	7,115.0	FAIRPORT		0.00	
7,304.0	7,162.0	GREENHORN		0.00	
7,504.0	7,362.0	GRANEROS		0.00	
7,674.0	7,532.0	MOWRY		0.00	
7,690.0	7,548.0	J-SAND		0.00	
7,775.0	7,633.0	SKULL CREEK A MARKER		0.00	