



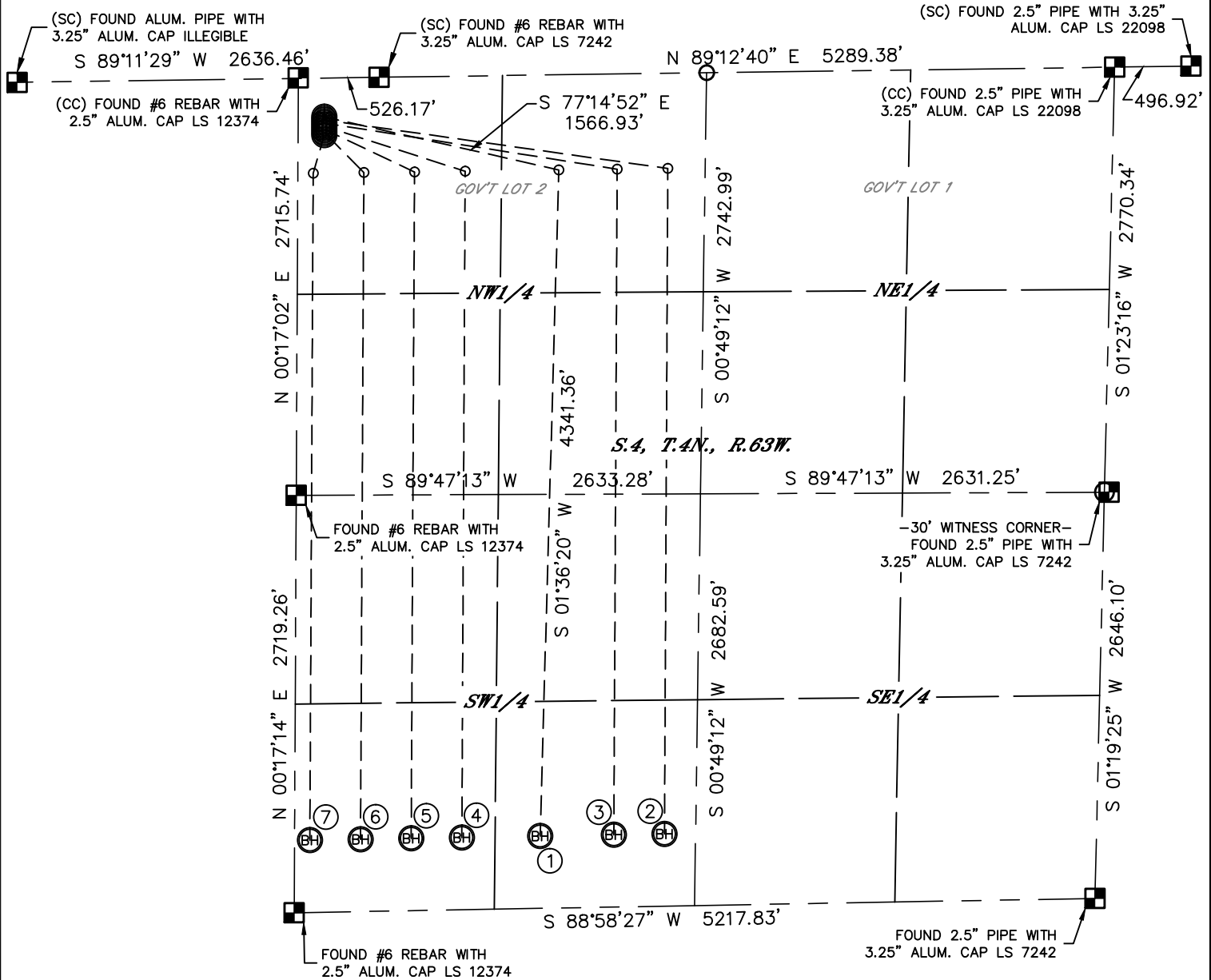
Lat40°, Inc. 1635 Foxtrail Drive, Suite 325 Loveland, CO 970-776-3321

MULTI-WELL PLAN

WETCO FARMS A-4 PAD

THIS MAP DOES NOT REPRESENT A BOUNDARY SURVEY

SECTION: 4
TOWNSHIP: 4N
RANGE: 63W



①

-SURFACE LOCATION-
WETCO FARMS F-J-4HC
253' FNL
170' FWL
LAT: 40.34799°N
LONG: 104.45167°W

②

-SURFACE LOCATION-
WETCO FARMS A2-4
273' FNL
170' FWL
LAT: 40.34794°N
LONG: 104.45167°W

③

-SURFACE LOCATION-
WETCO FARMS A3-4
293' FNL
170' FWL
LAT: 40.34788°N
LONG: 104.45168°W

④

-SURFACE LOCATION-
WETCO FARMS A4-4
313' FNL
170' FWL
LAT: 40.34783°N
LONG: 104.45168°W

⑤

-SURFACE LOCATION-
WETCO FARMS A5-4
333' FNL
170' FWL
LAT: 40.34777°N
LONG: 104.45168°W

⑥

-SURFACE LOCATION-
WETCO FARMS A6-4
353' FNL
170' FWL
LAT: 40.34772°N
LONG: 104.45168°W

⑦

-SURFACE LOCATION-
WETCO FARMS A7-4
373' FNL
170' FWL
LAT: 40.34766°N
LONG: 104.45168°W

LEGEND



= ALIQUOT MONUMENT AS DESCRIBED



= CALCULATED POSITION



1"=1000'

DATE: 1/4/2013
PROJECT#: 2012069

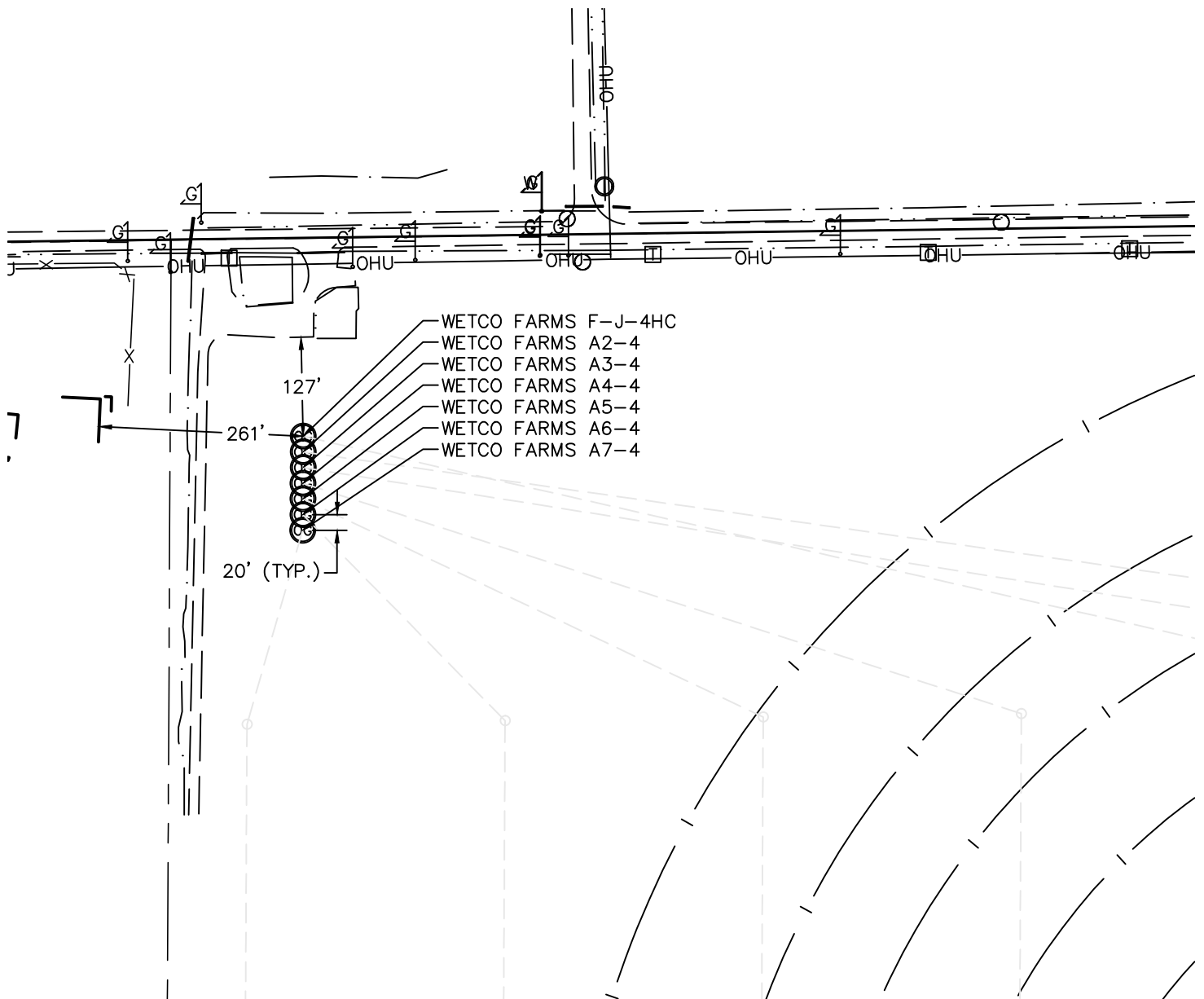


Lat40°, Inc. 1635 Foxtrail Drive, Suite 325 Loveland, CO 970-776-3321

MULTI-WELL PLAN

WETCO FARMS A-4 PAD

SECTION: 4
TOWNSHIP: 4N
RANGE: 63W



0 200
1"=200'

DATE: 1/4/2013
PROJECT#: 2012069