

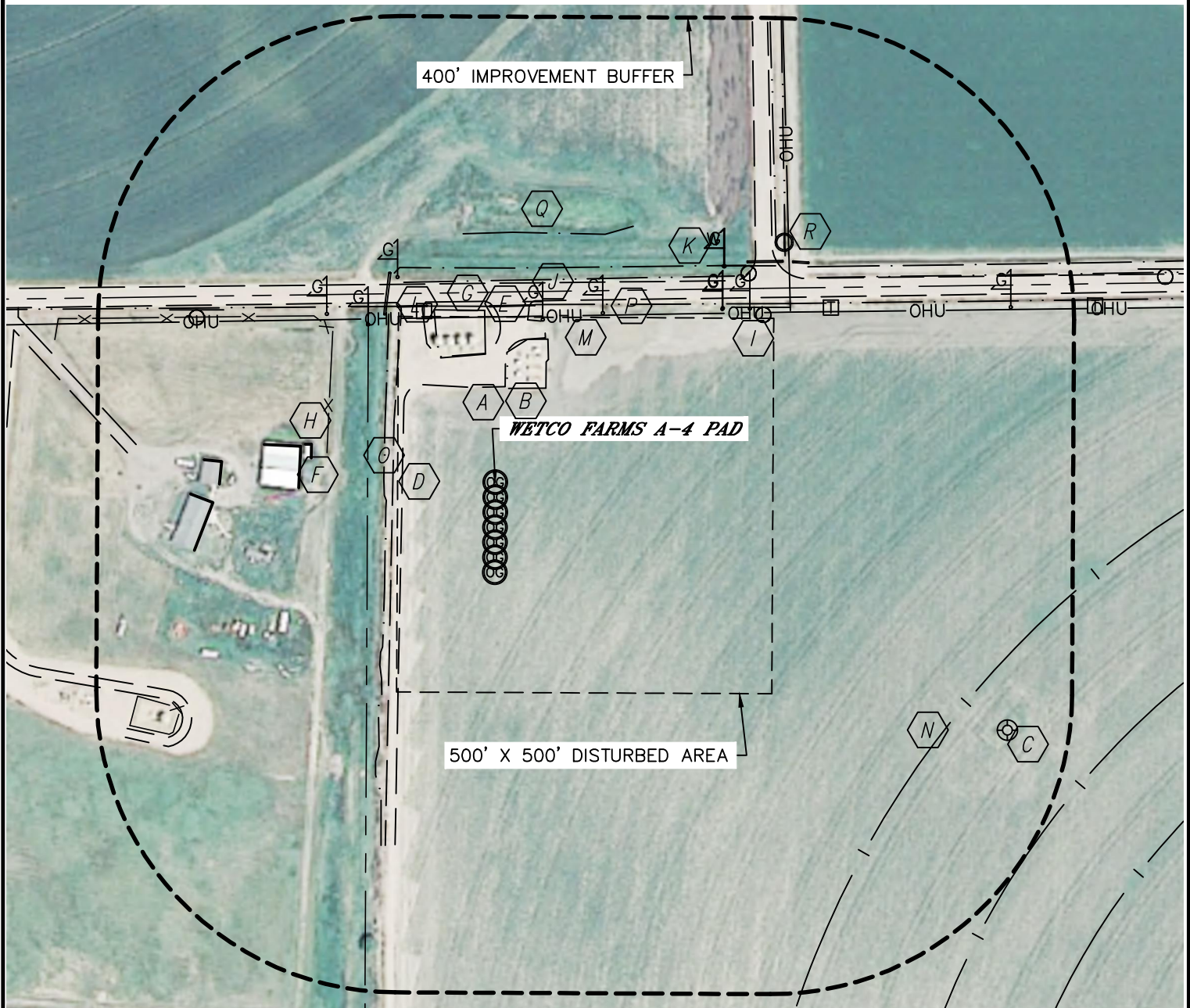


Lat40°, Inc. 1635 Foxtrail Drive, Suite 325 Loveland, CO 970-776-3321

LOCATION DRAWING

WETCO FARMS A-4 PAD

SECTION: 4
TOWNSHIP: 4N
RANGE: 63W



IMPROVEMENTS: (MEASURED FROM THE PROPOSED WETCO FARMS F-J-4HC WELL LOCATION)

- | | | |
|--|--|---|
| A EDGE OF GRAVEL 127' N | H FENCE 226' W | O DITCH 149' W, 285' N, 490' & 506' NE |
| B EX. PRODUCTION EQUIPMENT (BONANZA) 126' & 172' N, 518' SW | I SIGN 426' & 444' NE, 459' NW | P BARROW DITCH 234' & 269' N |
| C EX. WELL HEAD 758' SE | J GAS MARKER 303' & 317' NW, 226', 267', 380', 410', 420' & 725' NE | Q POND 332' N |
| D FIELD ROAD 130' W, 486' NW, 511' SW | K WATER MARKER 419' NE | R IRRIGATION WELL 500' NE |
| E CULVERT PIPE 252' & 268' NW, 234' N, 446' & 494' NE | L TELEPHONE PEDESTAL 247' NW, 504' NE | |
| F OUT BUILDING: 247', 261' & 365' W
DWELLING: 377' SW | M OVERHEAD UTILITY 220' N | |
| G PUBLIC ROAD (CR 50) 241' N | N PIVOT TRACK 678' SE | |

NEAREST: OUT BUILDING 247' W, PUBLIC ROAD 241' N (CR 50),
ABOVE GROUND UTILITY 220' N, RAILROAD 5280'+, PROPERTY LINE 170' W



1"=200'

DATE: rev.1/4/2013
PROJECT#: 2012069