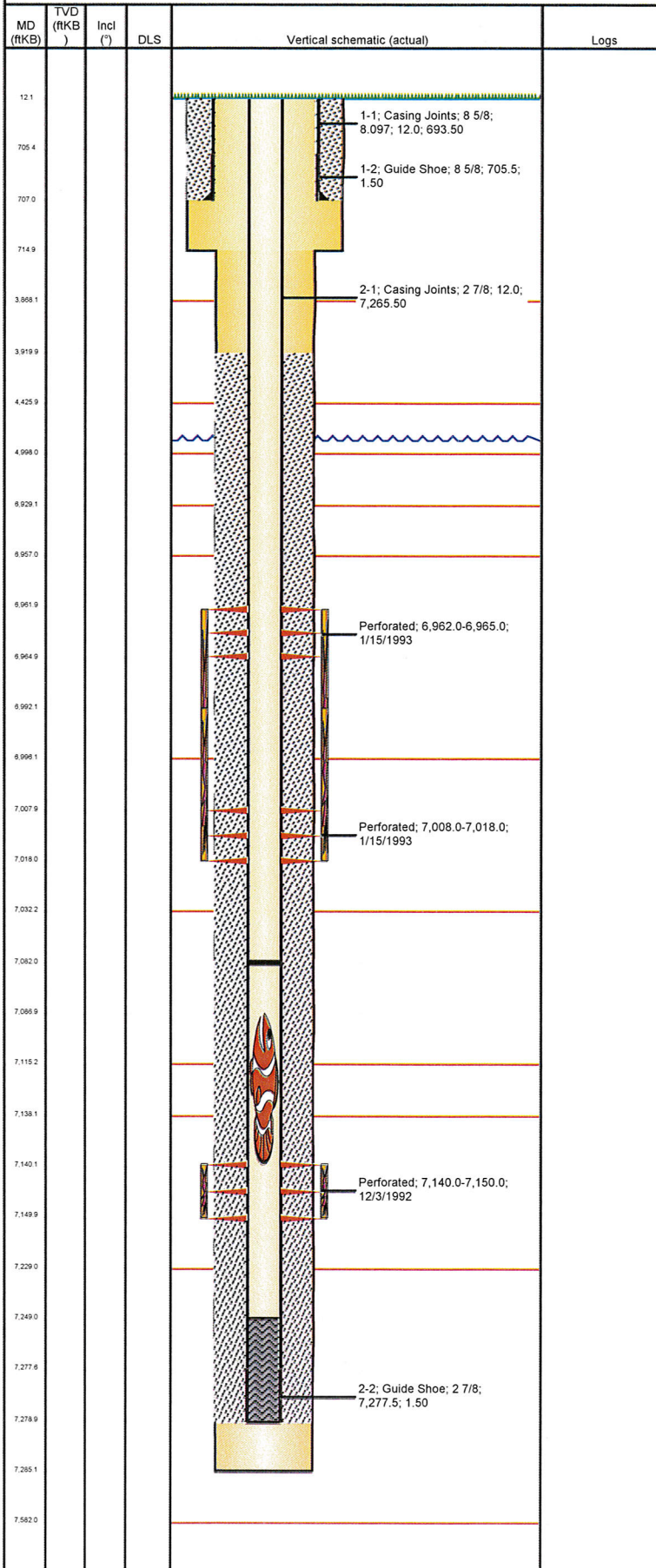


Well Name: MOSER 28-02

VERTICAL - ORIGINAL HOLE, 1/10/2013 11:53:09 AM



Well Header

API	Business Unit	District	Well Config
05-123-16054	WATTENBERG	15	VERTICAL
Original KB Elevation (ft)	KB - GL / MSL (ftKB)	Spud Date	P & A Date
4,838.00	12.00	9/30/1992	

Comment
OBJECT @ 7086'
UNIDENTIFIED OBSTRUCTION; BB SIZE METAL IN RETURNS; WRKD ON 4 DAYS COULD NOT REMOVE, 12/2003

Directions To Well

Congressional Location

Quarter 1	Quarter 2	Quarter 3	Quarter 4	Section	Township	Twnshp N...	Range	Rng E/W Dir
		NW	NE	28	3	N	65	W

Bottom Hole Location

North-South Distance (ft)	From N or S Line	East-West Distance (ft)	From E or W Line

Plug Back Total Depths

Date	Depth (ftKB)	Method	Com
10/6/1992	7,213.0	CASED HOLE LOG	DEPTH LOGGER ON CBL
10/6/1992	7,249.0	CASING TALLY	LATCH DOWN COLLAR
12/17/2003	7,082.0	TAG	UNIDENTIFIED OBSTRUCTION

Wellbore Sections

Section Des	Size (in)	Act Top (ftKB)	Act Btm (ftKB)
SURFACE	12 1/4	12.0	715.0
PRODUCTION	7 7/8	715.0	7,285.0

Zone Statuses

Zone Name	Status Date	Status	Job
NIOBRARA	2/8/1993	PR	RECOMPLETION, 1/13/1993 00:00
NIOBRARA	5/3/1993	PR	RECOMPLETION, 1/13/1993 00:00
CODELL	12/11/1992	SI	RECOMPLETION, 1/13/1993 00:00
CODELL	12/29/1992	PR	DRILLING/COMPLETION - ORIGINAL, 9/30/1992 00:00
CODELL	5/3/1993	PR	RECOMPLETION, 1/13/1993 00:00

Casing Strings

Surface, 707.0ftKB

Casing Description	Run Date	OD (in)	Wt/Len (l...)	Grade	Top (ftKB)	Set Depth...
Surface	10/1/1992	8 5/8	23.00	WC-50	12.0	707.0

Production, 7,279.0ftKB

Casing Description	Run Date	OD (in)	Wt/Len (l...)	Grade	Top (ftKB)	Set Depth...
Production	10/6/1992	2 7/8	6.50	J-55	12.0	7,279.0

Cement

Description	Top Depth (ftKB)	Bottom Depth (ftKB)
SURFACE CASING CEMENT	12.0	707.0
Description	Top Depth (ftKB)	Bottom Depth (ftKB)
PRODUCTION CASING CEMENT	3,920.0	7,279.0

Tubing Components

Item Des	OD (in)	Wt (lb/ft)	Grade	Jts	Len (ft)	Btm (ftKB)	Btm (TVD) (ftKB)

Perforation Data

Zone	Bnch/St g	Entered Shot Total	Top (ftKB)	Btm (ftKB)	Date
NIOBRARA, ORIGINAL HOLE	A	6	6,962.00	6,965.00	1/15/1993
NIOBRARA, ORIGINAL HOLE	B	20	7,008.00	7,018.00	1/15/1993
CODELL, ORIGINAL HOLE		20	7,140.00	7,150.00	12/3/1992

Stimulations & Treatments

Date	Zone	Primary Job Type
12/4/1992	CODELL, ORIGINAL HOLE	DRILLING/COMPLETION - ORIGINAL
Technical Result	Tech Result Details	Tech Result Note
Failure	Screen-out	

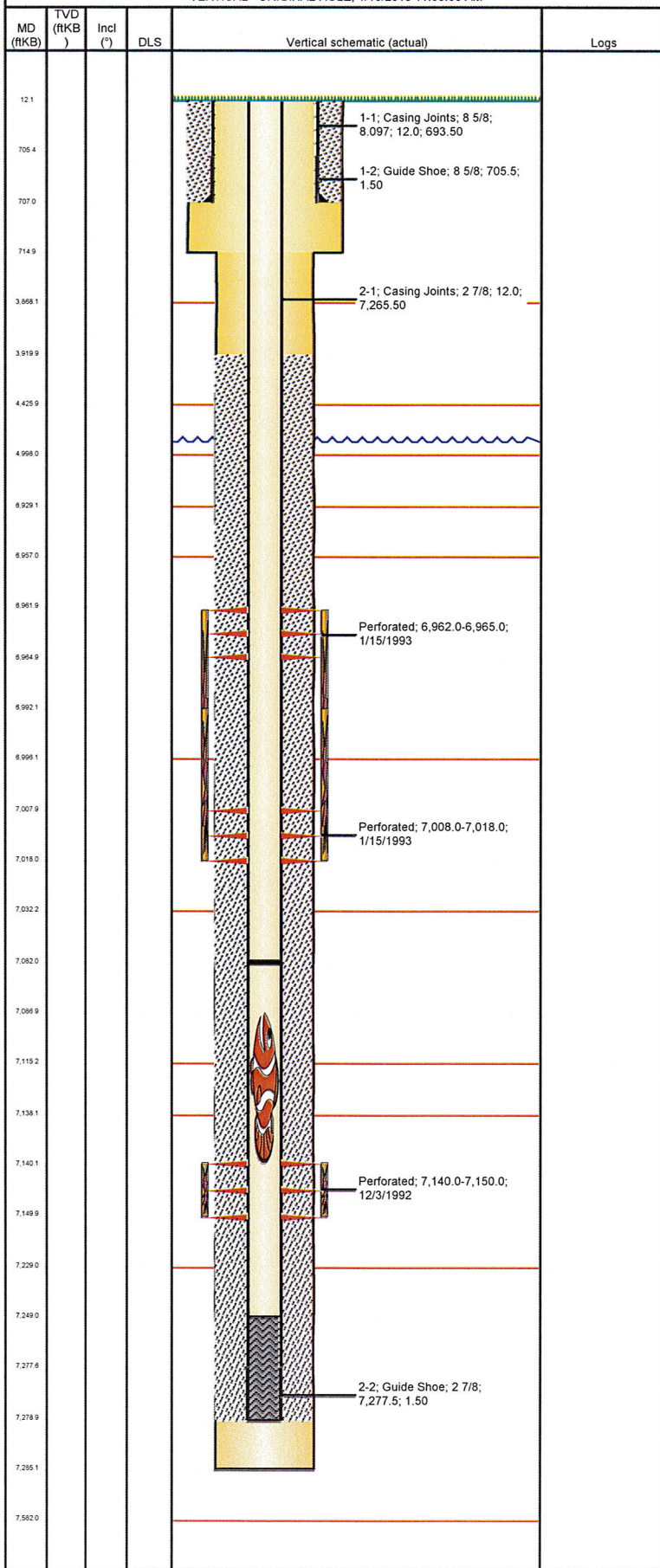
Comment
CDL SCREENED OUT

Date	Zone	Primary Job Type
1/18/1993	NIOBRARA, ORIGINAL HOLE	RECOMPLETION
Technical Result	Tech Result Details	Tech Result Note

Comment

Well Name: MOSER 28-02

VERTICAL - ORIGINAL HOLE, 1/10/2013 11:53:09 AM



Other In Hole

Run Date	Des	OD (in)	Top (ftKB)	Btm (ftKB)
12/12/2003		2.3	7,087.0	7,140.0

Logs

Date	Type	Top (ftKB)	Btm (ftKB)
10/6/1992	COMPENSATED DENSITY	3,800.0	7,253.0
10/6/1992	INDUCTION	708.0	7,283.0
12/3/1992	SONIC CEMENT	3,700.0	7,208.0